



Home report


1343 Eagle Crescent, Peterborough, ON, CA




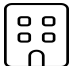
Property summary


**1** Garages


**4** Bedrooms

**2** Bathrooms

**0** Half baths

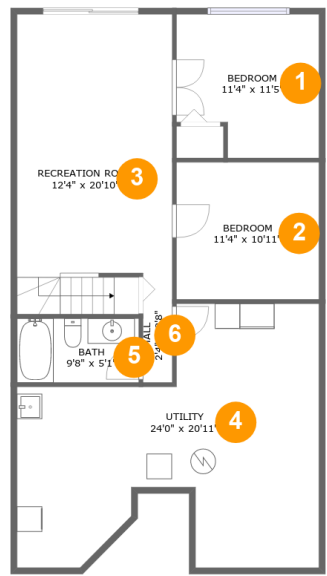
**2** Floors

**1,744** Gross living area sqft

**2,784** Total sqft

Home report

1343 Eagle Crescent,Peterborough,ON,CA



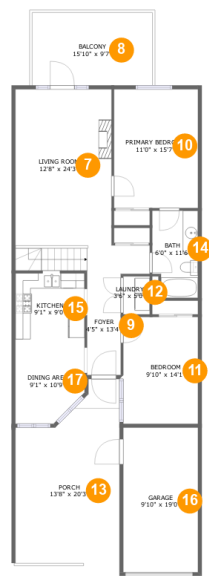
Room dimensions

Floor 1 Total sqft: 1064    Living area: 660

#		Dimensions	sqft	Counted as living area
1	Bedroom	11'4" x 11'5"	118 sq. ft	Yes
2	Bedroom	11'4" x 10'11"	123 sq. ft	Yes
3	Recreation Room	12'4" x 20'10"	284 sq. ft	Yes
4	Utility	24'0" x 20'11"	378 sq. ft	No
5	Bath	9'8" x 5'1"	49 sq. ft	Yes
6	Hall	2'4" x 8'8"	20 sq. ft	Yes

Home report

1343 Eagle Crescent,Peterborough,ON,CA

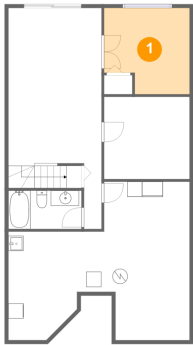


Room dimensions

Floor 2 Total sqft: 1720 Living area: 1084

#		Dimensions	sqft	Counted as living area
7	Living Room	12'8" x 24'3"	322 sq. ft	Yes
8	Balcony	15'10" x 9'7"	151 sq. ft	No
9	Foyer	4'5" x 13'4"	59 sq. ft	Yes
10	Primary Bedroom	11'0" x 15'7"	172 sq. ft	Yes
11	Bedroom	9'10" x 14'1"	138 sq. ft	Yes
12	Laundry	3'6" x 5'0"	17 sq. ft	Yes
13	Porch	13'8" x 20'3"	279 sq. ft	No
14	Bath	6'0" x 11'6"	65 sq. ft	Yes
15	Kitchen	9'1" x 9'0"	82 sq. ft	Yes
16	Garage	9'10" x 19'0"	186 sq. ft	No
17	Dining Area	9'1" x 10'9"	89 sq. ft	Yes

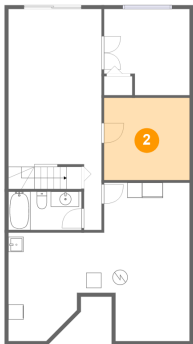
1 Floor 1 - Bedroom



Dimensions: 11'4" x 11'5"  
Area: 118 sq. ft  
Counted as living area: Yes

Heated: Yes  
Finished: Yes  
Enclosed: Yes  
Contiguous: Yes  
Permitted: Yes  
Wet space: No  
Addition: No  
Conversion: No

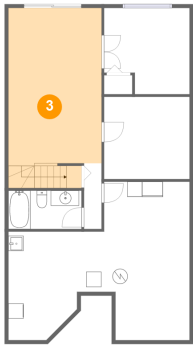
2 Floor 1 - Bedroom



Dimensions: 11'4" x 10'11"  
Area: 123 sq. ft  
Counted as living area: Yes

Heated: Yes  
Finished: Yes  
Enclosed: Yes  
Contiguous: Yes  
Permitted: Yes  
Wet space: No  
Addition: No  
Conversion: No

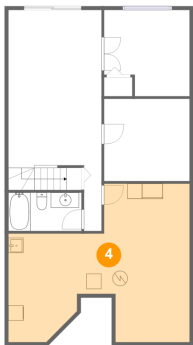
3 Floor 1 - Recreation Room



Dimensions: 12'4" x 20'10"  
Area: 284 sq. ft  
Counted as living area: Yes

Heated: Yes  
Finished: Yes  
Enclosed: Yes  
Contiguous: Yes  
Permitted: Yes  
Wet space: No  
Addition: No  
Conversion: No

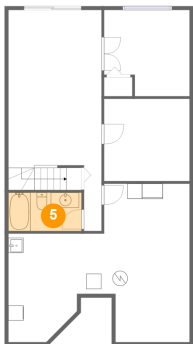
4 Floor 1 - Utility



Dimensions: 24'0" x 20'11"  
Area: 378 sq. ft  
Counted as living area: No

Heated: Yes  
Finished: No  
Enclosed: Yes  
Contiguous: Yes  
Permitted: Yes  
Wet space: No  
Addition: No  
Conversion: No

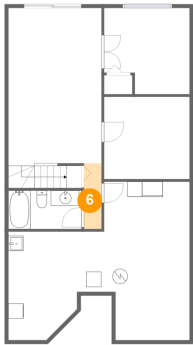
5 Floor 1 - Bath



Dimensions: 9'8" x 5'1"  
Area: 49 sq. ft  
Counted as living area: Yes

Heated: Yes  
Finished: Yes  
Enclosed: Yes  
Contiguous: Yes  
Permitted: Yes  
Wet space: Yes  
Addition: No  
Conversion: No

6 Floor 1 - Hall



Dimensions: 2'4" x 8'8"  
Area: 20 sq. ft  
Counted as living area: Yes

Heated: Yes  
Finished: Yes  
Enclosed: Yes  
Contiguous: Yes  
Permitted: Yes  
Wet space: No  
Addition: No  
Conversion: No

7 Floor 2 - Living Room



Dimensions: 12'8" x 24'3"  
Area: 322 sq. ft  
Counted as living area: Yes

Heated: Yes  
Finished: Yes  
Enclosed: Yes  
Contiguous: Yes  
Permitted: Yes  
Wet space: No  
Addition: No  
Conversion: No

8 Floor 2 - Balcony



Dimensions: 15'10" x 9'7"  
Area: 151 sq. ft  
Counted as living area: No

Heated: No  
Finished: Yes  
Enclosed: No  
Contiguous: Yes  
Permitted: Yes  
Wet space: No  
Addition: No  
Conversion: No

9 Floor 2 - Foyer



Dimensions: 4'5" x 13'4"  
Area: 59 sq. ft  
Counted as living area: Yes

Heated: Yes  
Finished: Yes  
Enclosed: Yes  
Contiguous: Yes  
Permitted: Yes  
Wet space: No  
Addition: No  
Conversion: No

10 Floor 2 - Primary Bedroom



Dimensions: 11'0" x 15'7"  
Area: 172 sq. ft  
Counted as living area: Yes

Heated: Yes  
Finished: Yes  
Enclosed: Yes  
Contiguous: Yes  
Permitted: Yes  
Wet space: No  
Addition: No  
Conversion: No

11 Floor 2 - Bedroom



Dimensions: 9'10" x 14'1"  
Area: 138 sq. ft  
Counted as living area: Yes

Heated: Yes  
Finished: Yes  
Enclosed: Yes  
Contiguous: Yes  
Permitted: Yes  
Wet space: No  
Addition: No  
Conversion: No

## 12 Floor 2 - Laundry



Dimensions: 3'6" x 5'0"  
Area: 17 sq. ft  
Counted as living area: Yes

Heated: Yes  
Finished: Yes  
Enclosed: Yes  
Contiguous: Yes  
Permitted: Yes  
Wet space: No  
Addition: No  
Conversion: No

## 13 Floor 2 - Porch



Dimensions: 13'8" x 20'3"  
Area: 279 sq. ft  
Counted as living area: No

Heated: No  
Finished: Yes  
Enclosed: No  
Contiguous: Yes  
Permitted: Yes  
Wet space: No  
Addition: No  
Conversion: No

## 14 Floor 2 - Bath



Dimensions: 6'0" x 11'6"  
Area: 65 sq. ft  
Counted as living area: Yes

Heated: Yes  
Finished: Yes  
Enclosed: Yes  
Contiguous: Yes  
Permitted: Yes  
Wet space: Yes  
Addition: No  
Conversion: No



15 Floor 2 - Kitchen



Dimensions: 9'1" x 9'0"  
Area: 82 sq. ft  
Counted as living area: Yes

Heated: Yes  
Finished: Yes  
Enclosed: Yes  
Contiguous: Yes  
Permitted: Yes  
Wet space: No  
Addition: No  
Conversion: No

16 Floor 2 - Garage



Dimensions: 9'10" x 19'0"  
Area: 186 sq. ft  
Counted as living area: No

Heated: No  
Finished: Yes  
Enclosed: Yes  
Contiguous: Yes  
Permitted: Yes  
Wet space: No  
Addition: No  
Conversion: No

17 Floor 2 - Dining Area



Dimensions: 9'1" x 10'9"  
Area: 89 sq. ft  
Counted as living area: Yes

Heated: Yes  
Finished: Yes  
Enclosed: Yes  
Contiguous: Yes  
Permitted: Yes  
Wet space: No  
Addition: No  
Conversion: No