


533 Fleming Avenue Northeast, Preston Park, Roanoke, Roanoke city, Virginia, United States, 24012



Property summary

 **0** Garages

 **3** Bedrooms

 **2** Bathrooms

 **0** Half baths

 **4** Floors

 **1,703**
Gross living
area sqft

 **2,406**
Total sqft

533 Fleming Avenue Northeast, Preston Park,
Roanoke, Roanoke city, Virginia, United States, 24012

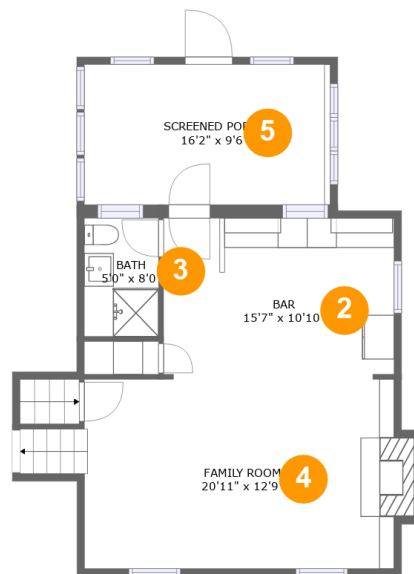


Room dimensions

Floor 1 Total sqft: 482 Living area: 0

#		Dimensions	sqft	Counted as living area
1	Basement	19'5" x 22'7"	439 sq. ft	No

**533 Fleming Avenue Northeast, Preston Park,
Roanoke, Roanoke city, Virginia, United States, 24012**



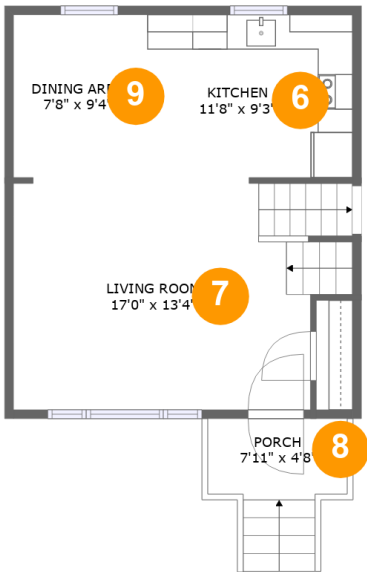
Room dimensions

Floor 2

Total sqft: 762 Living area: 578

#		Dimensions	sqft	Counted as living area
2	Bar	15'7" x 10'10"	168 sq. ft	Yes
3	Bath	5'0" x 8'0"	40 sq. ft	Yes
4	Family Room	20'11" x 12'9"	287 sq. ft	Yes
5	Screened Porch	16'2" x 9'6"	157 sq. ft	No

533 Fleming Avenue Northeast, Preston Park,
Roanoke, Roanoke city, Virginia, United States, 24012



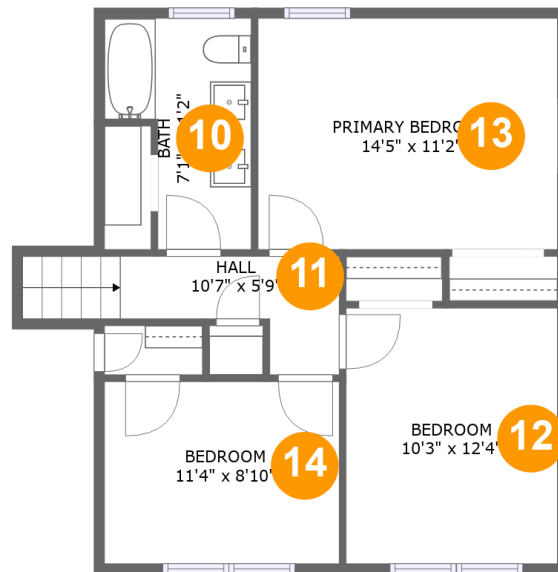
Room dimensions

Floor 3

Total sqft: 519 Living area: 482

#		Dimensions	sqft	Counted as living area
6	Kitchen	11'8" x 9'3"	109 sq. ft	Yes
7	Living Room	17'0" x 13'4"	239 sq. ft	Yes
8	Porch	7'11" x 4'8"	37 sq. ft	No
9	Dining Area	7'8" x 9'4"	72 sq. ft	Yes

**533 Fleming Avenue Northeast, Preston Park,
Roanoke, Roanoke city, Virginia, United States, 24012**



Room dimensions

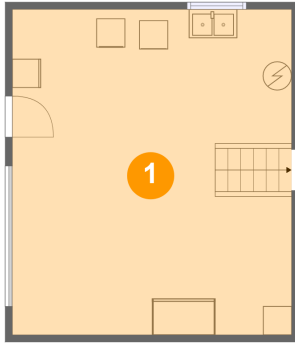
Floor 4

Total sqft: 643 Living area: 643

#		Dimensions	sqft	Counted as living area
10	Bath	7'1" x 11'2"	63 sq. ft	Yes
11	Hall	10'7" x 5'9"	55 sq. ft	Yes
12	Bedroom	10'3" x 12'4"	126 sq. ft	Yes
13	Primary Bedroom	14'5" x 11'2"	162 sq. ft	Yes
14	Bedroom	11'4" x 8'10"	100 sq. ft	Yes

**533 Fleming Avenue Northeast, Preston Park,
Roanoke, Roanoke city, Virginia, United States, 24012**

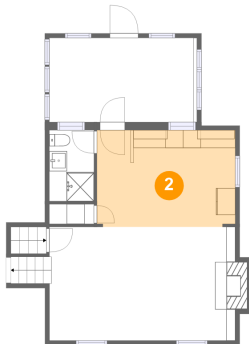
1 Floor 1 - Basement



Dimensions: 19'5" x 22'7"
Area: 439 sq. ft
Counted as living area: No

Heated: Yes
Finished: No
Enclosed: Yes
Contiguous: Yes
Permitted: Yes
Wet space: No
Addition: No
Conversion: No

2 Floor 2 - Bar

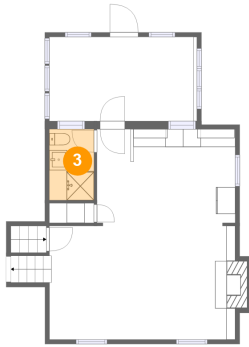


Dimensions: 15'7" x 10'10"
Area: 168 sq. ft
Counted as living area: Yes

Heated: Yes
Finished: Yes
Enclosed: Yes
Contiguous: Yes
Permitted: Yes
Wet space: No
Addition: No
Conversion: No

533 Fleming Avenue Northeast, Preston Park,
Roanoke, Roanoke city, Virginia, United States, 24012

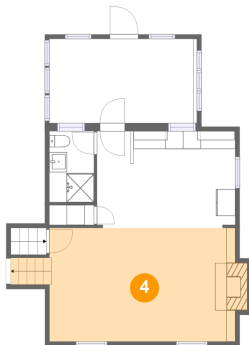
3 Floor 2 - Bath



Dimensions: 5'0" x 8'0"
Area: 40 sq. ft
Counted as living area: Yes

Heated: Yes
Finished: Yes
Enclosed: Yes
Contiguous: Yes
Permitted: Yes
Wet space: Yes
Addition: No
Conversion: No

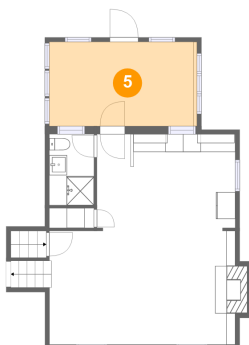
4 Floor 2 - Family Room



Dimensions: 20'11" x 12'9"
Area: 287 sq. ft
Counted as living area: Yes

Heated: Yes
Finished: Yes
Enclosed: Yes
Contiguous: Yes
Permitted: Yes
Wet space: No
Addition: No
Conversion: No

5 Floor 2 - Screened Porch

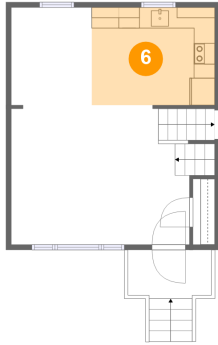


Dimensions: 16'2" x 9'6"
Area: 157 sq. ft
Counted as living area: No

Heated: No
Finished: Yes
Enclosed: No
Contiguous: Yes
Permitted: Yes
Wet space: No
Addition: No
Conversion: No

**533 Fleming Avenue Northeast, Preston Park,
Roanoke, Roanoke city, Virginia, United States, 24012**

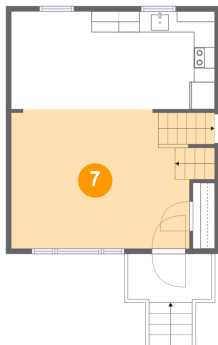
6 Floor 3 - Kitchen



Dimensions: 11'8" x 9'3"
Area: 109 sq. ft
Counted as living area: Yes

Heated: Yes
Finished: Yes
Enclosed: Yes
Contiguous: Yes
Permitted: Yes
Wet space: No
Addition: No
Conversion: No

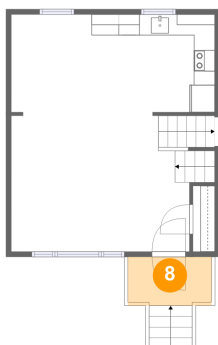
7 Floor 3 - Living Room



Dimensions: 17'0" x 13'4"
Area: 239 sq. ft
Counted as living area: Yes

Heated: Yes
Finished: Yes
Enclosed: Yes
Contiguous: Yes
Permitted: Yes
Wet space: No
Addition: No
Conversion: No

8 Floor 3 - Porch

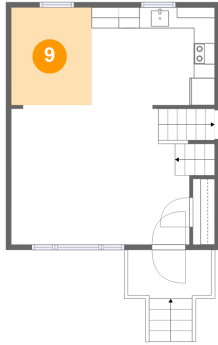


Dimensions: 7'11" x 4'8"
Area: 37 sq. ft
Counted as living area: No

Heated: No
Finished: Yes
Enclosed: No
Contiguous: Yes
Permitted: Yes
Wet space: No
Addition: No
Conversion: No

533 Fleming Avenue Northeast, Preston Park,
Roanoke, Roanoke city, Virginia, United States, 24012

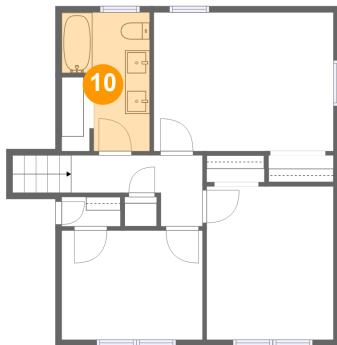
9 Floor 3 - Dining Area



Dimensions: 7'8" x 9'4"
Area: 72 sq. ft
Counted as living area: Yes

Heated: Yes
Finished: Yes
Enclosed: Yes
Contiguous: Yes
Permitted: Yes
Wet space: No
Addition: No
Conversion: No

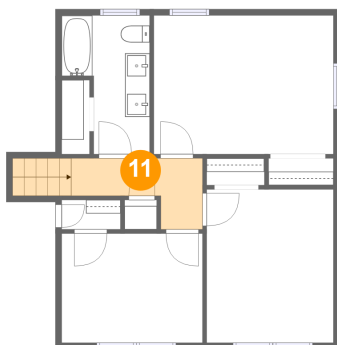
10 Floor 4 - Bath



Dimensions: 7'1" x 11'2"
Area: 63 sq. ft
Counted as living area: Yes

Heated: Yes
Finished: Yes
Enclosed: Yes
Contiguous: Yes
Permitted: Yes
Wet space: Yes
Addition: No
Conversion: No

11 Floor 4 - Hall

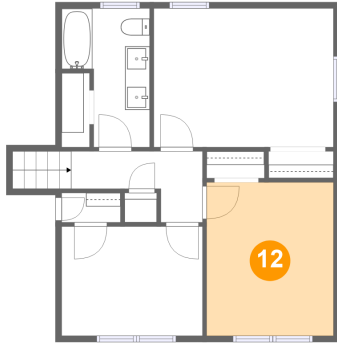


Dimensions: 10'7" x 5'9"
Area: 55 sq. ft
Counted as living area: Yes

Heated: Yes
Finished: Yes
Enclosed: Yes
Contiguous: Yes
Permitted: Yes
Wet space: No
Addition: No
Conversion: No

**533 Fleming Avenue Northeast, Preston Park,
Roanoke, Roanoke city, Virginia, United States, 24012**

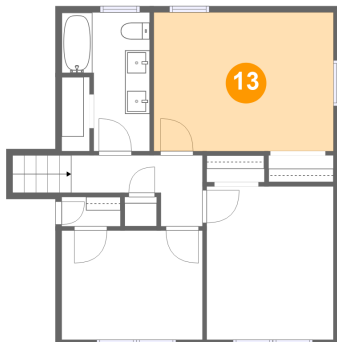
12 Floor 4 - Bedroom



Dimensions: 10'3" x 12'4"
Area: 126 sq. ft
Counted as living area: Yes

Heated: Yes
Finished: Yes
Enclosed: Yes
Contiguous: Yes
Permitted: Yes
Wet space: No
Addition: No
Conversion: No

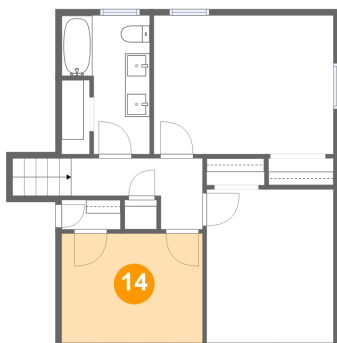
13 Floor 4 - Primary Bedroom



Dimensions: 14'5" x 11'2"
Area: 162 sq. ft
Counted as living area: Yes

Heated: Yes
Finished: Yes
Enclosed: Yes
Contiguous: Yes
Permitted: Yes
Wet space: No
Addition: No
Conversion: No

14 Floor 4 - Bedroom



Dimensions: 11'4" x 8'10"
Area: 100 sq. ft
Counted as living area: Yes

Heated: Yes
Finished: Yes
Enclosed: Yes
Contiguous: Yes
Permitted: Yes
Wet space: No
Addition: No
Conversion: No