


# 3455 Londonderry Court, Ruxton, Cave Spring, Roanoke, Roanoke County, Virginia, United States,



## Property summary


 **0** Garages

 **2** Bedrooms

 **2** Bathrooms

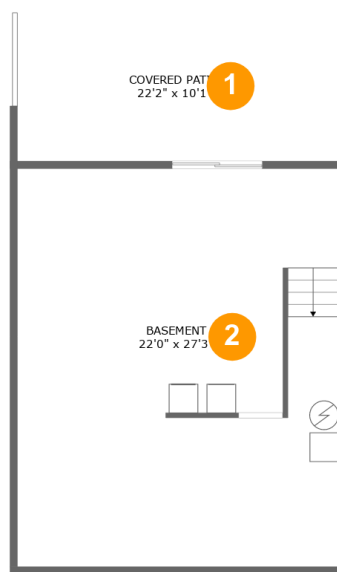
 **1** Half baths

 **3** Floors

 **1,286** Gross living area sqft

 **2,362** Total sqft

# 3455 Londonderry Court, Ruxton, Cave Spring, Roanoke, Roanoke County, Virginia, United States,



## Room dimensions

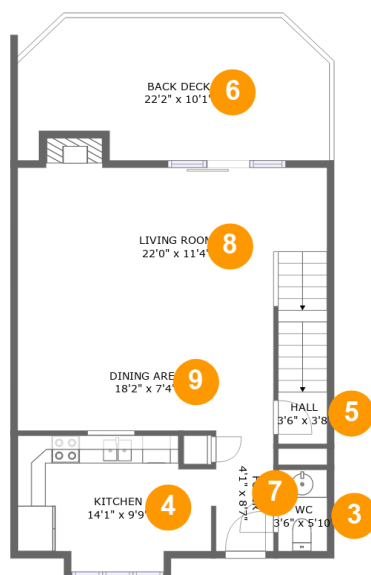
Floor 1

Total sqft: 861

Living area: 0

#		Dimensions	sqft	Counted as living area
1	Covered Patio	22'2" x 10'1"	225 sq. ft	No
2	Basement	22'0" x 27'3"	600 sq. ft	No

# 3455 Londonderry Court, Ruxton, Cave Spring, Roanoke, Roanoke County, Virginia, United States,



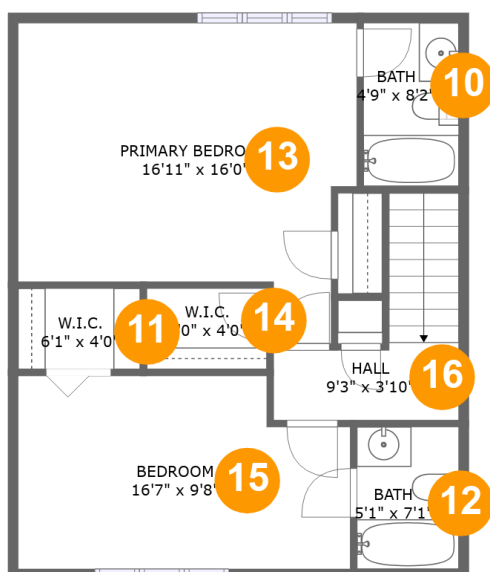
## Room dimensions

Floor 2

Total sqft: 865 Living area: 650

#		Dimensions	sqft	Counted as living area
3	WC	3'6" x 5'10"	20 sq. ft	Yes
4	Kitchen	14'1" x 9'9"	120 sq. ft	Yes
5	Hall	3'6" x 3'8"	13 sq. ft	Yes
6	Back Deck	22'2" x 10'1"	204 sq. ft	No
7	Foyer	4'1" x 8'7"	35 sq. ft	Yes
8	Living Room	22'0" x 11'4"	274 sq. ft	Yes
9	Dining Area	18'2" x 7'4"	134 sq. ft	Yes

# 3455 Londonderry Court, Ruxton, Cave Spring, Roanoke, Roanoke County, Virginia, United States,



## Room dimensions

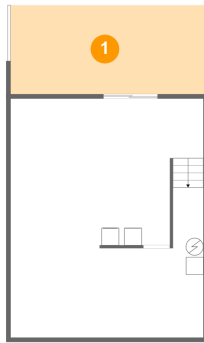
Floor 3

Total sqft: 636 Living area: 636

#		Dimensions	sqft	Counted as living area
10	Bath	4'9" x 8'2"	39 sq. ft	Yes
11	W.I.C.	6'1" x 4'0"	25 sq. ft	Yes
12	Bath	5'1" x 7'1"	36 sq. ft	Yes
13	Primary Bedroom	16'11" x 16'0"	221 sq. ft	Yes
14	W.I.C.	6'0" x 4'0"	24 sq. ft	Yes
15	Bedroom	16'7" x 9'8"	149 sq. ft	Yes
16	Hall	9'3" x 3'10"	60 sq. ft	Yes

# 3455 Londonderry Court, Ruxton, Cave Spring, Roanoke, Roanoke County, Virginia, United States,

## 1 Floor 1 - Covered Patio



Dimensions: 22'2" x 10'1"  
Area: 225 sq. ft  
Counted as living area: No

Heated: No  
Finished: Yes  
Enclosed: No  
Contiguous: Yes  
Permitted: Yes  
Wet space: No  
Addition: No  
Conversion: No

## 2 Floor 1 - Basement

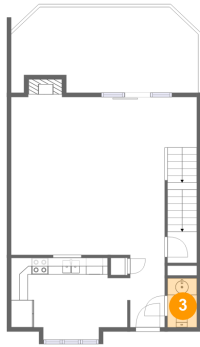


Dimensions: 22'0" x 27'3"  
Area: 600 sq. ft  
Counted as living area: No

Heated: No  
Finished: No  
Enclosed: Yes  
Contiguous: Yes  
Permitted: Yes  
Wet space: No  
Addition: No  
Conversion: No

**3455 Londonderry Court, Ruxton, Cave Spring,  
Roanoke, Roanoke County, Virginia, United States,**

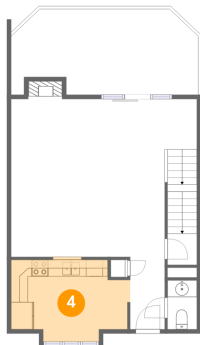
### 3 Floor 2 - WC



**Dimensions: 3'6" x 5'10"**  
**Area: 20 sq. ft**  
**Counted as living area: Yes**

**Heated: Yes**  
**Finished: Yes**  
**Enclosed: Yes**  
**Contiguous: Yes**  
**Permitted: Yes**  
**Wet space: No**  
**Addition: No**  
**Conversion: No**

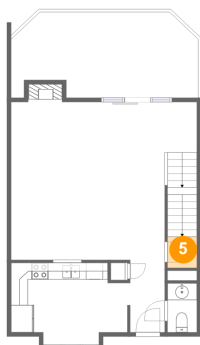
### 4 Floor 2 - Kitchen



**Dimensions: 14'1" x 9'9"**  
**Area: 120 sq. ft**  
**Counted as living area: Yes**

**Heated: Yes**  
**Finished: Yes**  
**Enclosed: Yes**  
**Contiguous: Yes**  
**Permitted: Yes**  
**Wet space: No**  
**Addition: No**  
**Conversion: No**

### 5 Floor 2 - Hall

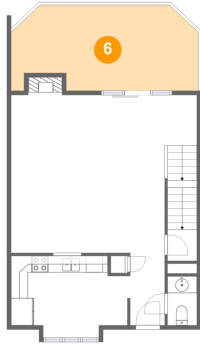


**Dimensions: 3'6" x 3'8"**  
**Area: 13 sq. ft**  
**Counted as living area: Yes**

**Heated: Yes**  
**Finished: Yes**  
**Enclosed: Yes**  
**Contiguous: Yes**  
**Permitted: Yes**  
**Wet space: No**  
**Addition: No**  
**Conversion: No**

**3455 Londonderry Court, Ruxton, Cave Spring,  
Roanoke, Roanoke County, Virginia, United States,**

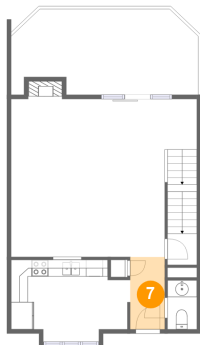
**6 Floor 2 - Back Deck**



**Dimensions:** 22'2" x 10'1"  
**Area:** 204 sq. ft  
**Counted as living area:** No

**Heated:** No  
**Finished:** Yes  
**Enclosed:** No  
**Contiguous:** No  
**Permitted:** Yes  
**Wet space:** No  
**Addition:** No  
**Conversion:** No

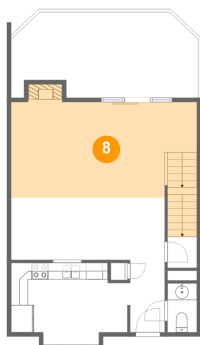
**7 Floor 2 - Foyer**



**Dimensions:** 4'1" x 8'7"  
**Area:** 35 sq. ft  
**Counted as living area:** Yes

**Heated:** Yes  
**Finished:** Yes  
**Enclosed:** Yes  
**Contiguous:** Yes  
**Permitted:** Yes  
**Wet space:** No  
**Addition:** No  
**Conversion:** No

**8 Floor 2 - Living Room**

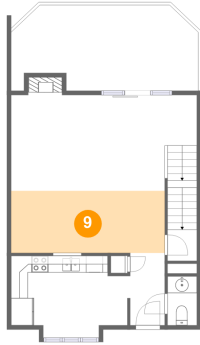


**Dimensions:** 22'0" x 11'4"  
**Area:** 274 sq. ft  
**Counted as living area:** Yes

**Heated:** Yes  
**Finished:** Yes  
**Enclosed:** Yes  
**Contiguous:** Yes  
**Permitted:** Yes  
**Wet space:** No  
**Addition:** No  
**Conversion:** No

**3455 Londonderry Court, Ruxton, Cave Spring,  
Roanoke, Roanoke County, Virginia, United States,**

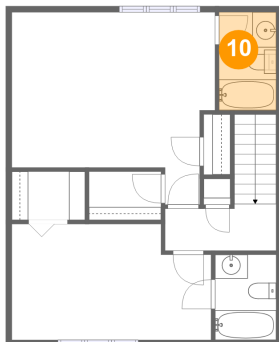
**9 Floor 2 - Dining Area**



**Dimensions: 18'2" x 7'4"**  
**Area: 134 sq. ft**  
**Counted as living area: Yes**

**Heated: Yes**  
**Finished: Yes**  
**Enclosed: Yes**  
**Contiguous: Yes**  
**Permitted: Yes**  
**Wet space: No**  
**Addition: No**  
**Conversion: No**

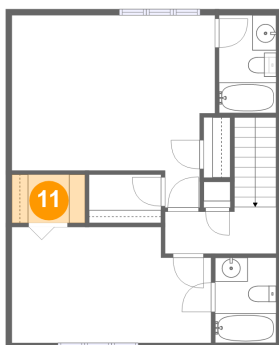
**10 Floor 3 - Bath**



**Dimensions: 4'9" x 8'2"**  
**Area: 39 sq. ft**  
**Counted as living area: Yes**

**Heated: Yes**  
**Finished: Yes**  
**Enclosed: Yes**  
**Contiguous: Yes**  
**Permitted: Yes**  
**Wet space: Yes**  
**Addition: No**  
**Conversion: No**

**11 Floor 3 - W.I.C.**



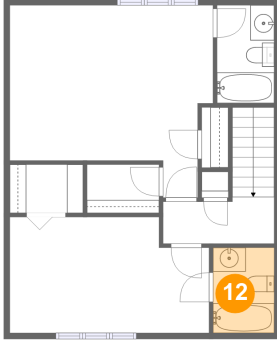
**Dimensions: 6'1" x 4'0"**  
**Area: 25 sq. ft**  
**Counted as living area: Yes**

**Heated: Yes**  
**Finished: Yes**  
**Enclosed: Yes**  
**Contiguous: Yes**  
**Permitted: Yes**  
**Wet space: No**  
**Addition: No**  
**Conversion: No**



**3455 Londonderry Court, Ruxton, Cave Spring,  
Roanoke, Roanoke County, Virginia, United States,**

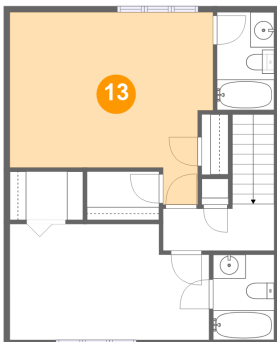
**12 Floor 3 - Bath**



**Dimensions: 5'1" x 7'1"**  
**Area: 36 sq. ft**  
**Counted as living area: Yes**

**Heated: Yes**  
**Finished: Yes**  
**Enclosed: Yes**  
**Contiguous: Yes**  
**Permitted: Yes**  
**Wet space: Yes**  
**Addition: No**  
**Conversion: No**

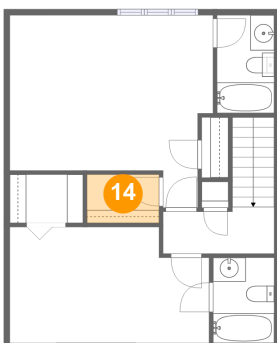
**13 Floor 3 - Primary Bedroom**



**Dimensions: 16'11" x 16'0"**  
**Area: 221 sq. ft**  
**Counted as living area: Yes**

**Heated: Yes**  
**Finished: Yes**  
**Enclosed: Yes**  
**Contiguous: Yes**  
**Permitted: Yes**  
**Wet space: No**  
**Addition: No**  
**Conversion: No**

**14 Floor 3 - W.I.C.**

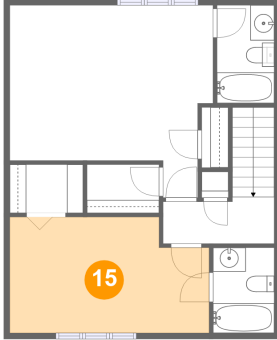


**Dimensions: 6'0" x 4'0"**  
**Area: 24 sq. ft**  
**Counted as living area: Yes**

**Heated: Yes**  
**Finished: Yes**  
**Enclosed: Yes**  
**Contiguous: Yes**  
**Permitted: Yes**  
**Wet space: No**  
**Addition: No**  
**Conversion: No**

**3455 Londonderry Court, Ruxton, Cave Spring,  
Roanoke, Roanoke County, Virginia, United States,**

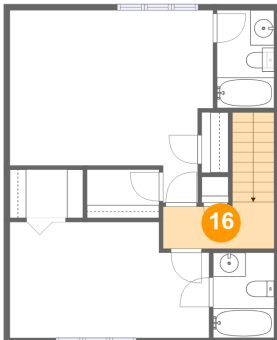
**15 Floor 3 - Bedroom**



**Dimensions: 16'7" x 9'8"**  
**Area: 149 sq. ft**  
**Counted as living area: Yes**

**Heated: Yes**  
**Finished: Yes**  
**Enclosed: Yes**  
**Contiguous: Yes**  
**Permitted: Yes**  
**Wet space: No**  
**Addition: No**  
**Conversion: No**

**16 Floor 3 - Hall**



**Dimensions: 9'3" x 3'10"**  
**Area: 60 sq. ft**  
**Counted as living area: Yes**

**Heated: Yes**  
**Finished: Yes**  
**Enclosed: Yes**  
**Contiguous: Yes**  
**Permitted: Yes**  
**Wet space: No**  
**Addition: No**  
**Conversion: No**