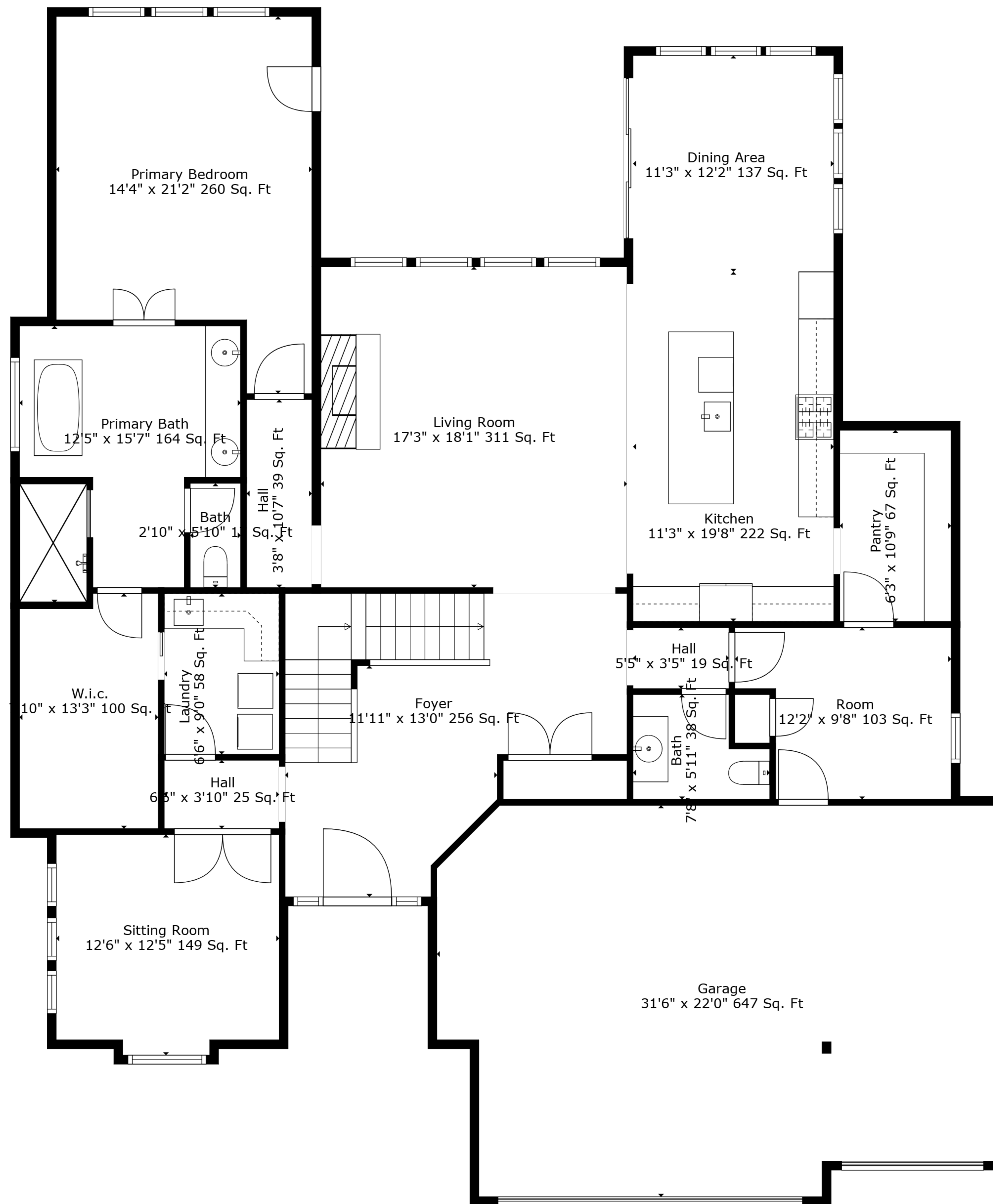


Basement
52'4" x 58'1" 2068 Sq. Ft

TOTAL: 3286 sq. ft
BELOW GROUND: 0 sq. ft, FLOOR 2: 2070 sq. ft, FLOOR 3: 1216 sq. ft
EXCLUDED AREAS: BASEMENT: 2069 sq. ft, GARAGE: 647 sq. ft, OPEN TO BELOW: 357 sq. ft

Measurements Are Deemed Highly Reliable But Not Guaranteed.

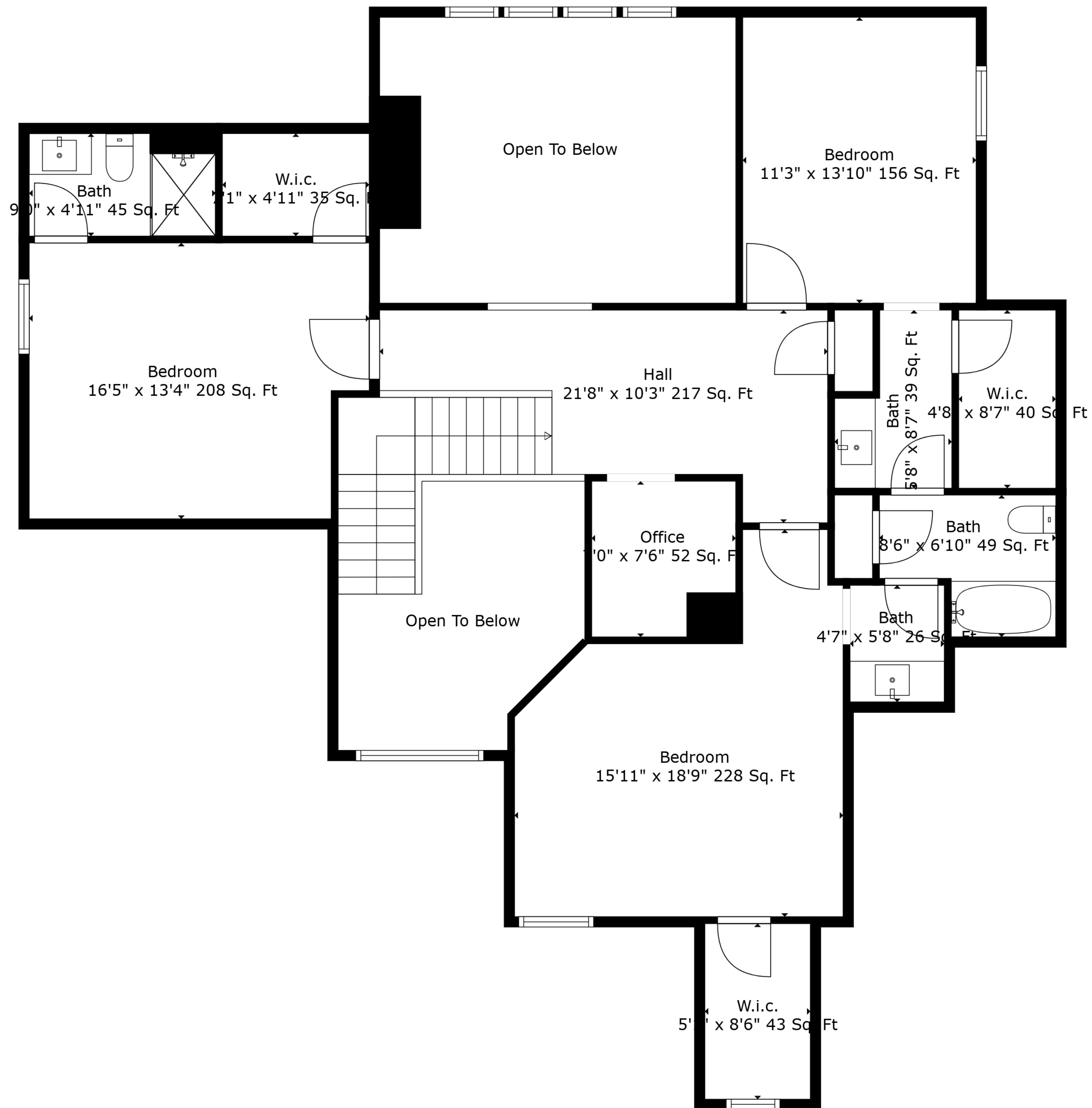


TOTAL: 3286 sq. ft

BELOW GROUND: 0 sq. ft, FLOOR 2: 2070 sq. ft, FLOOR 3: 1216 sq. ft

EXCLUDED AREAS: BASEMENT: 2069 sq. ft, GARAGE: 647 sq. ft, OPEN TO BELOW: 357 sq. ft

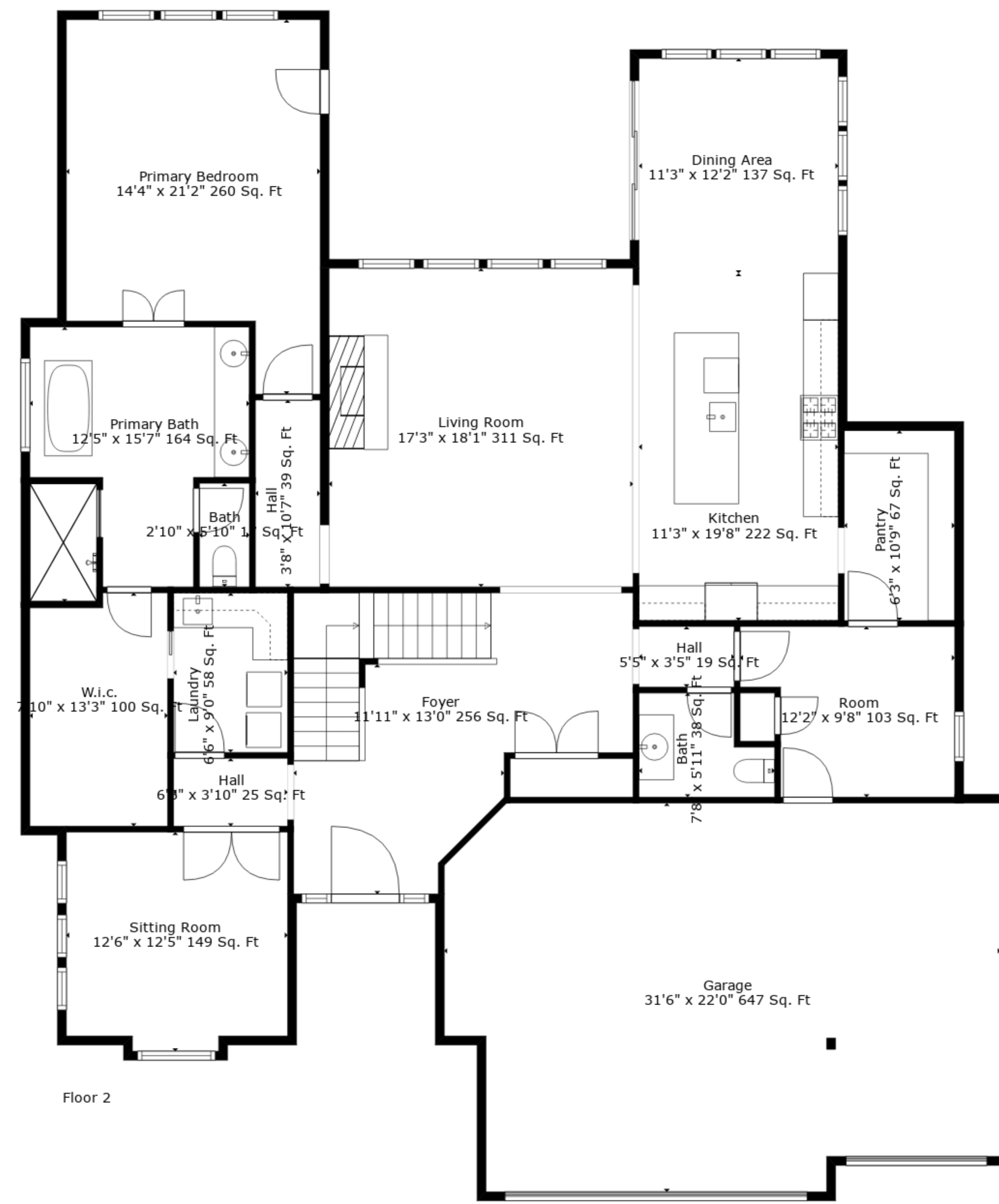
Measurements Are Deemed Highly Reliable But Not Guaranteed.



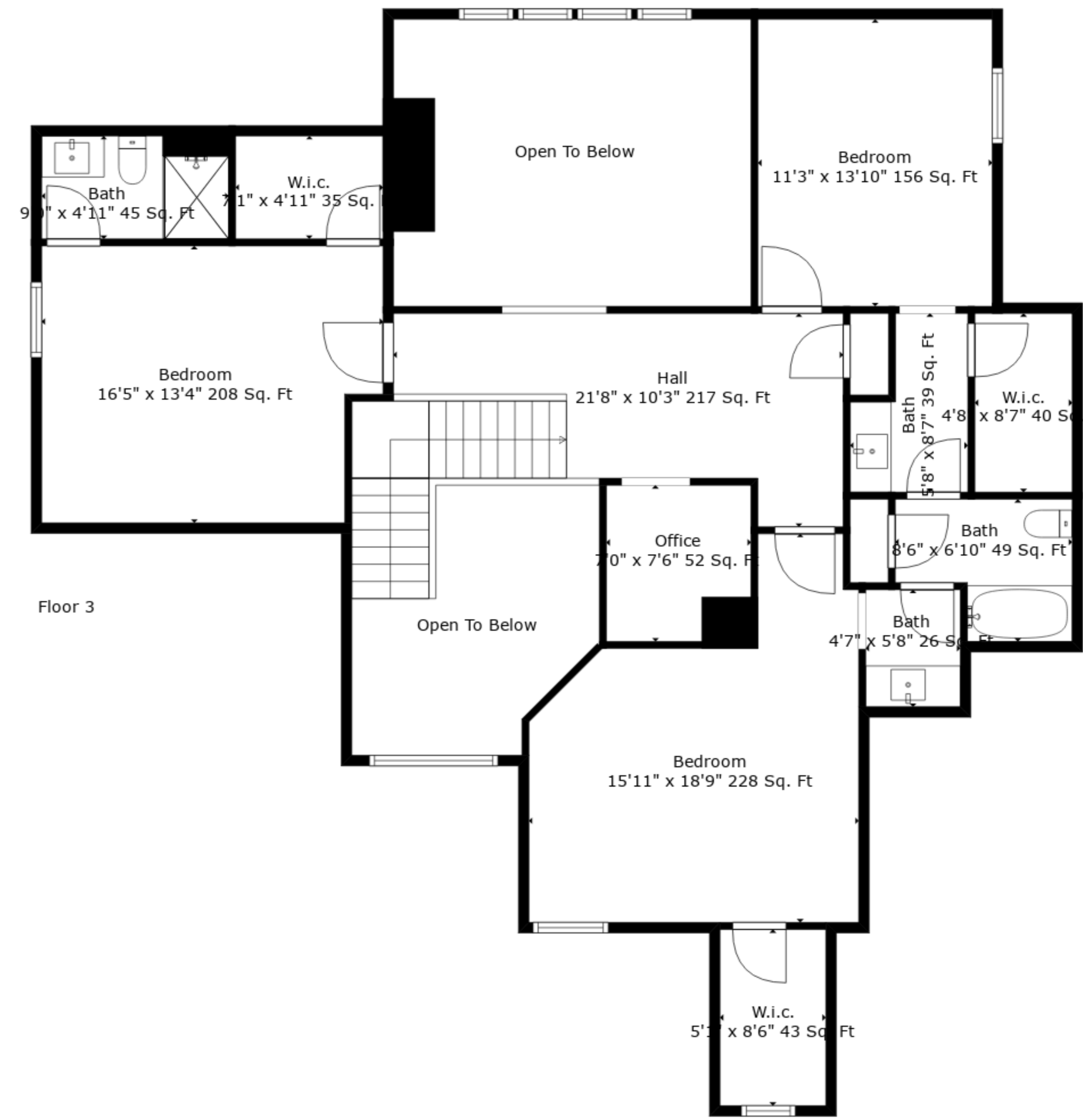
TOTAL: 3286 sq. ft

BELOW GROUND: 0 sq. ft, FLOOR 2: 2070 sq. ft, FLOOR 3: 1216 sq. ft
 EXCLUDED AREAS: BASEMENT: 2069 sq. ft, GARAGE: 647 sq. ft, OPEN TO BELOW: 357 sq. ft

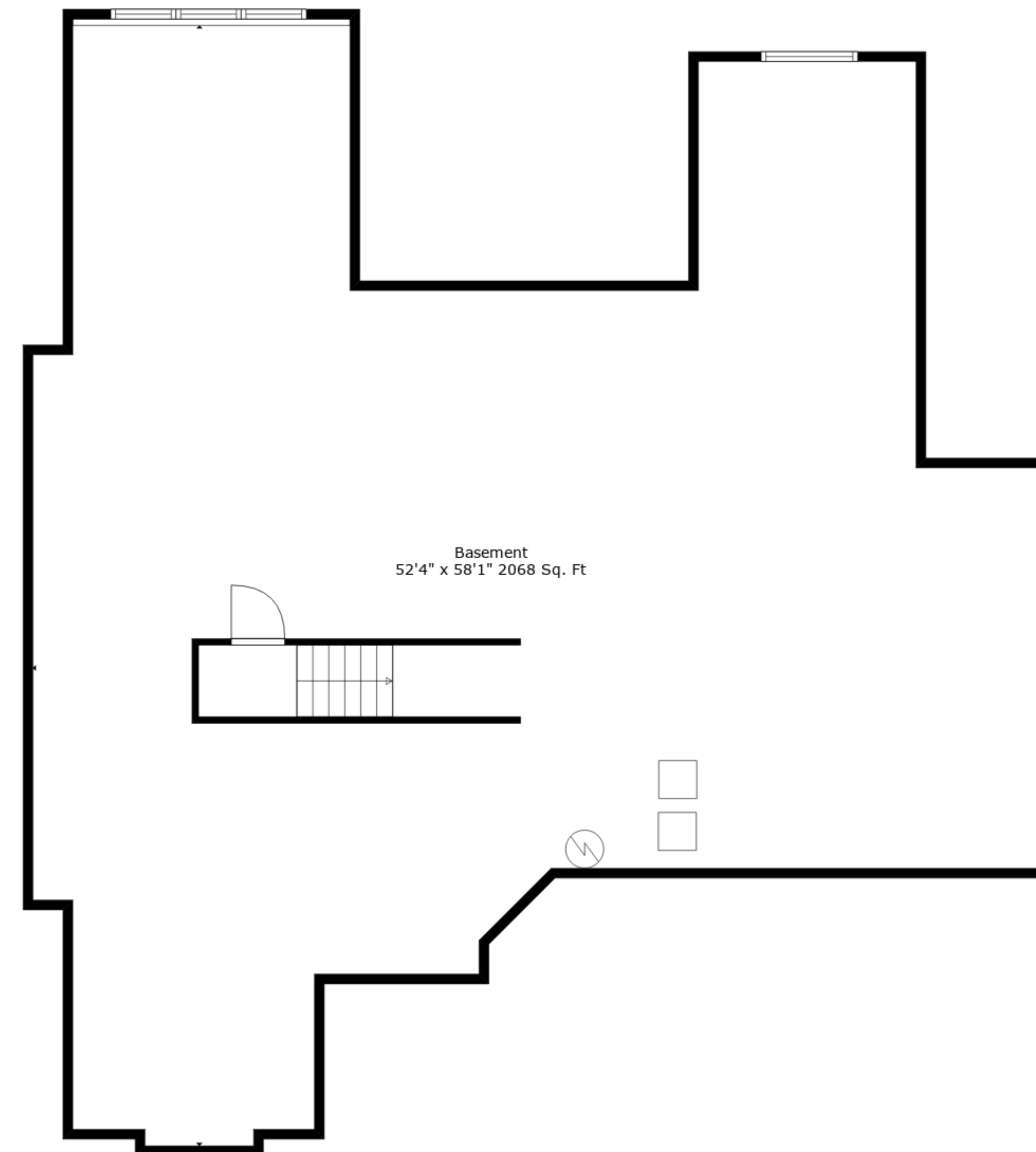
Measurements Are Deemed Highly Reliable But Not Guaranteed.



Floor 2



Floor 3



Floor 1

TOTAL: 3286 sq. ft
 BELOW GROUND: 0 sq. ft, FLOOR 2: 2070 sq. ft, FLOOR 3: 1216 sq. ft
 EXCLUDED AREAS: BASEMENT: 2069 sq. ft, GARAGE: 647 sq. ft, OPEN TO BELOW: 357 sq. ft

Measurements Are Deemed Highly Reliable But Not Guaranteed.