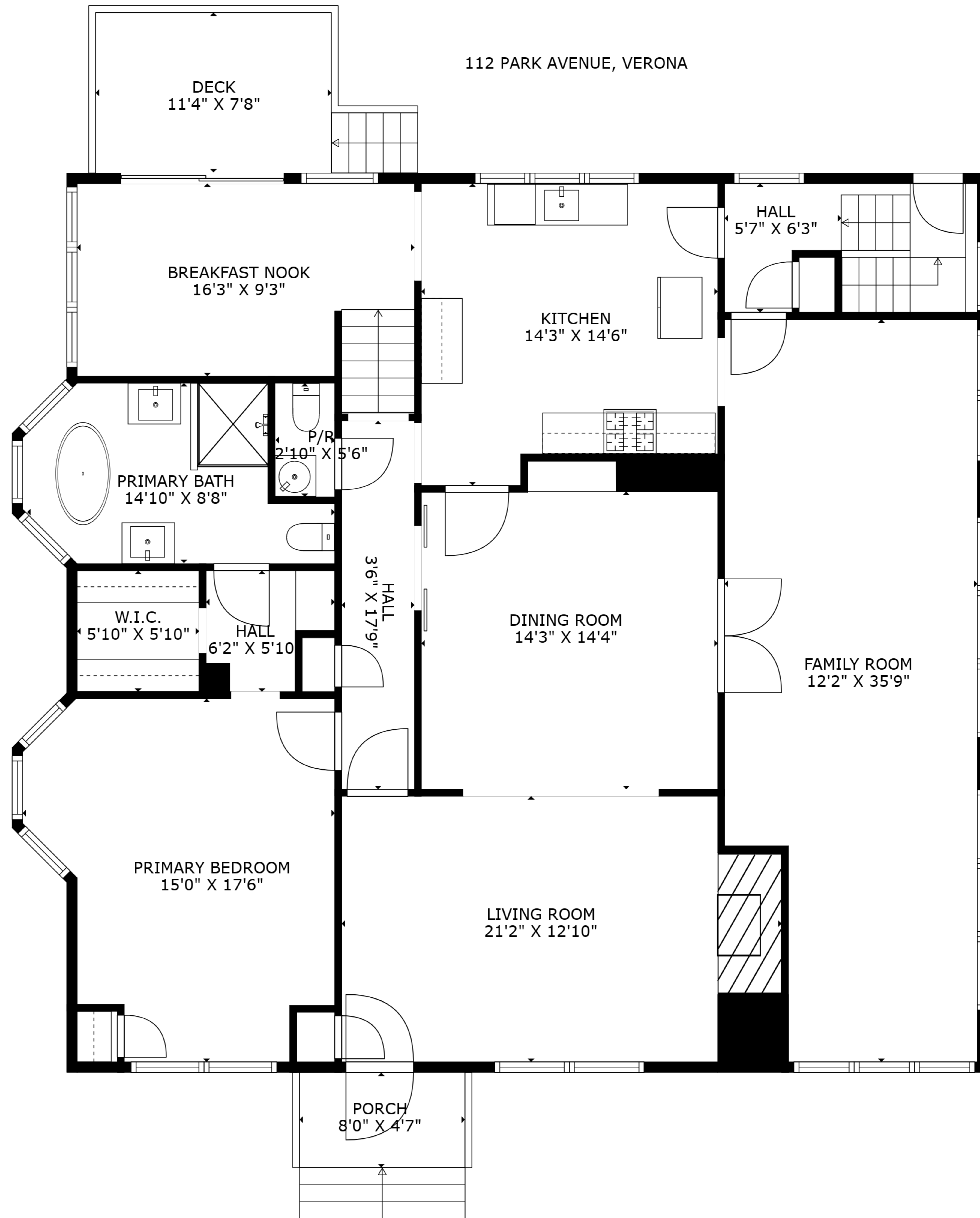
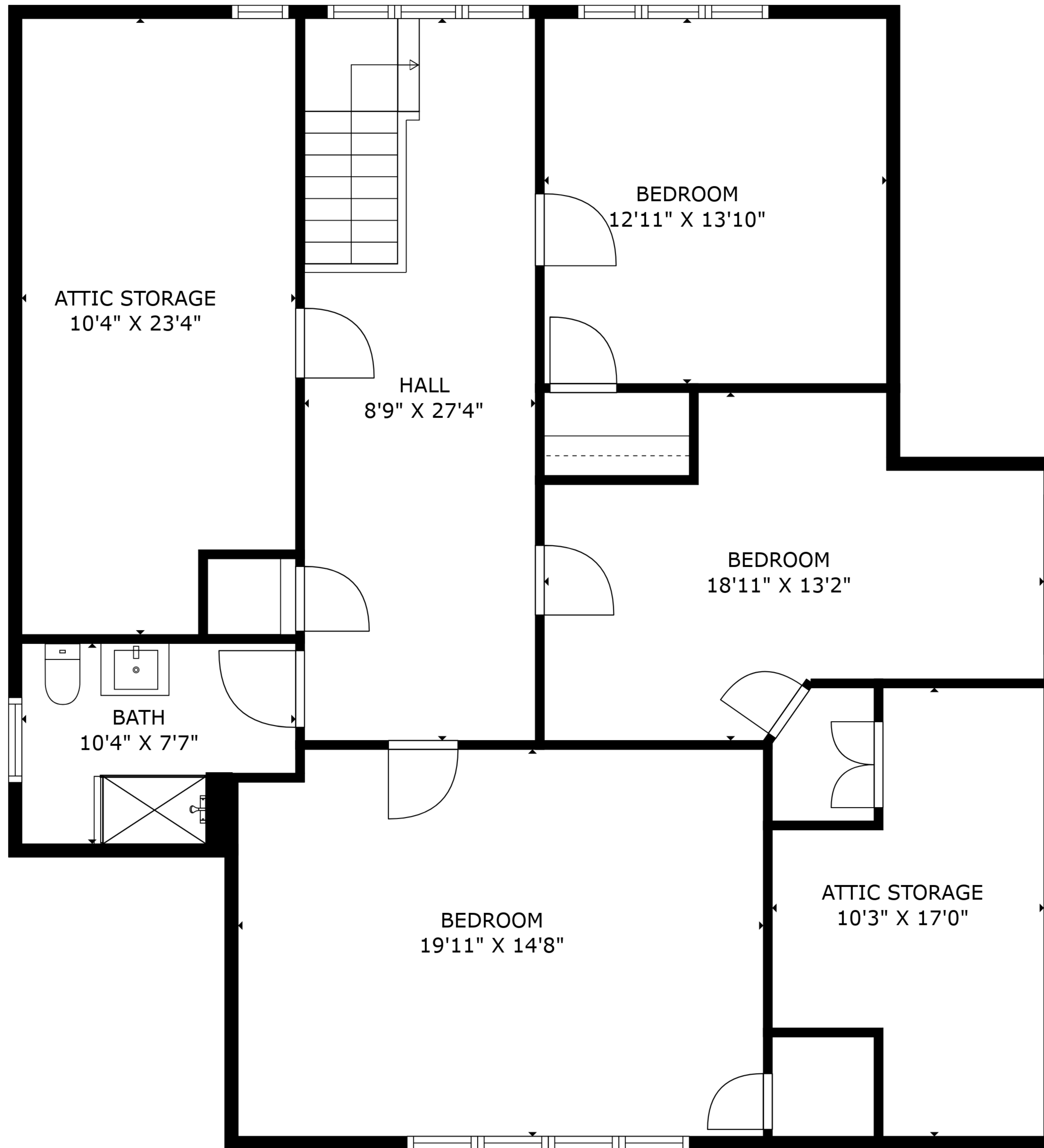


TOTAL: 3568 sq. ft
 BELOW GROUND: 702 sq. ft, FIRST FLOOR: 1856 sq. ft, SECOND FLOOR: 1010 sq. ft
 EXCLUDED AREAS: ROOM: 105 sq. ft, ELECTRICAL ROOM: 385 sq. ft, HALL: 12 sq. ft,
 DECK: 88 sq. ft, PORCH: 37 sq. ft, ATTIC STORAGE: 284 sq. ft,
 LOW CEILING: 150 sq. ft

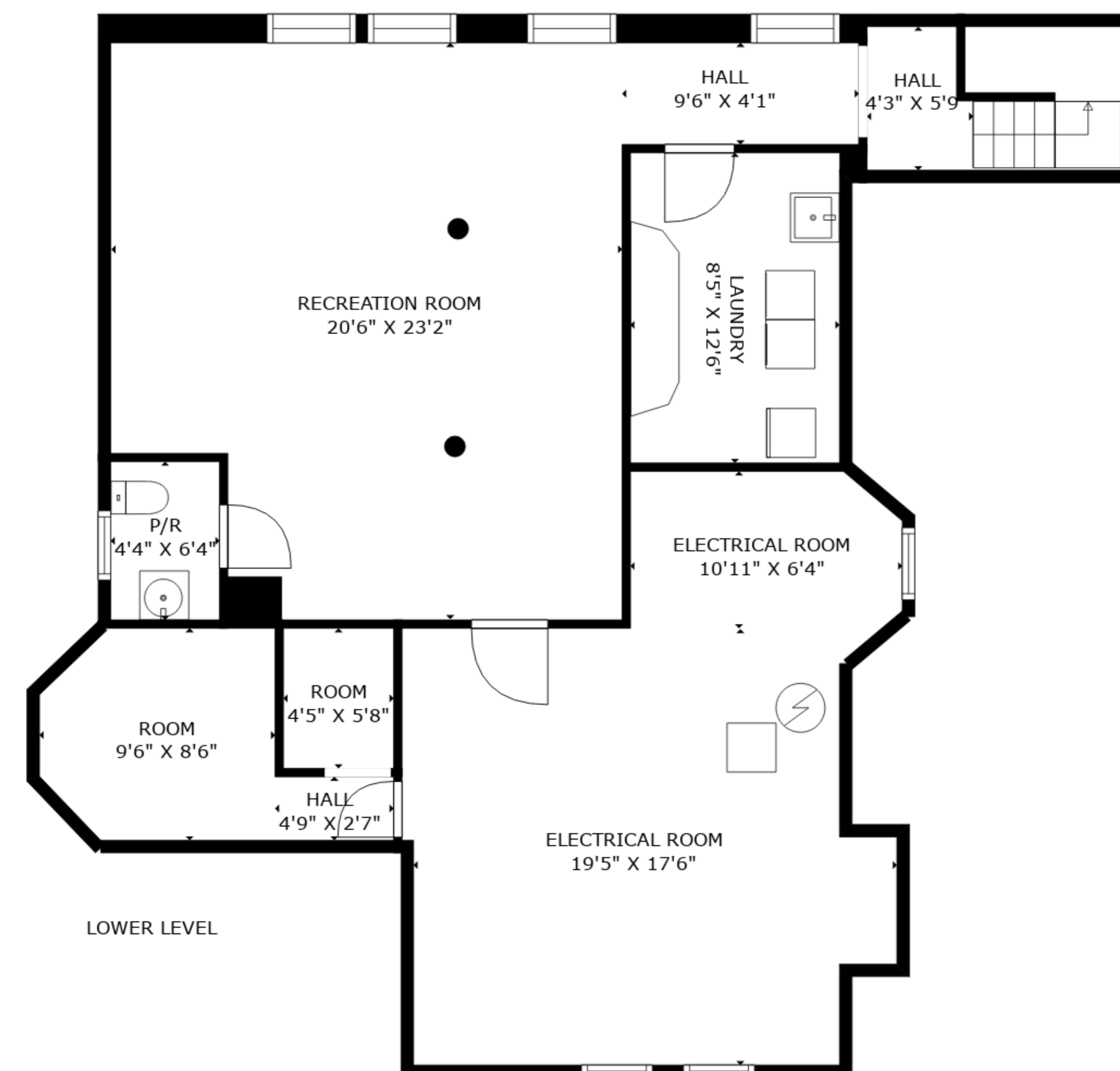
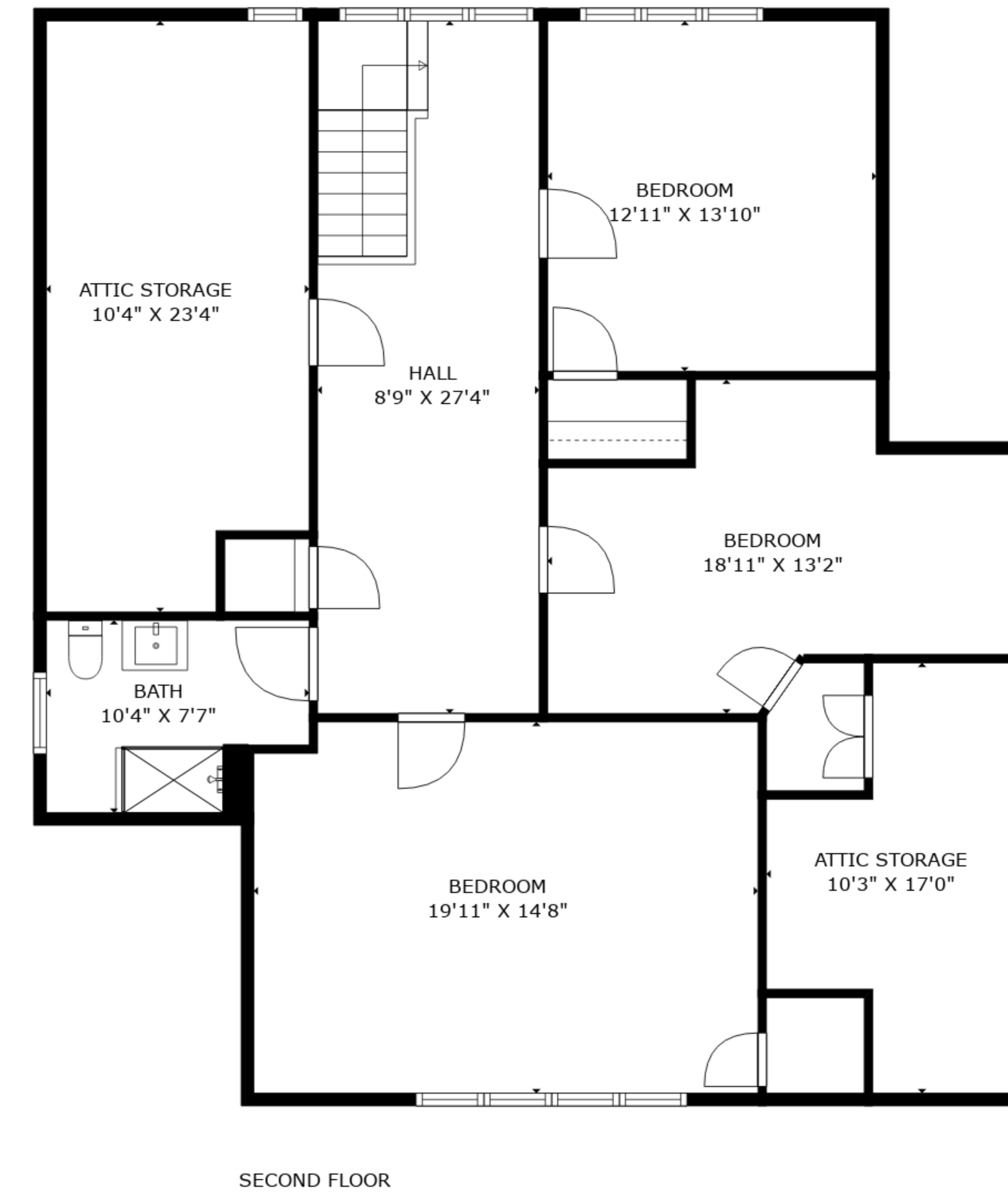
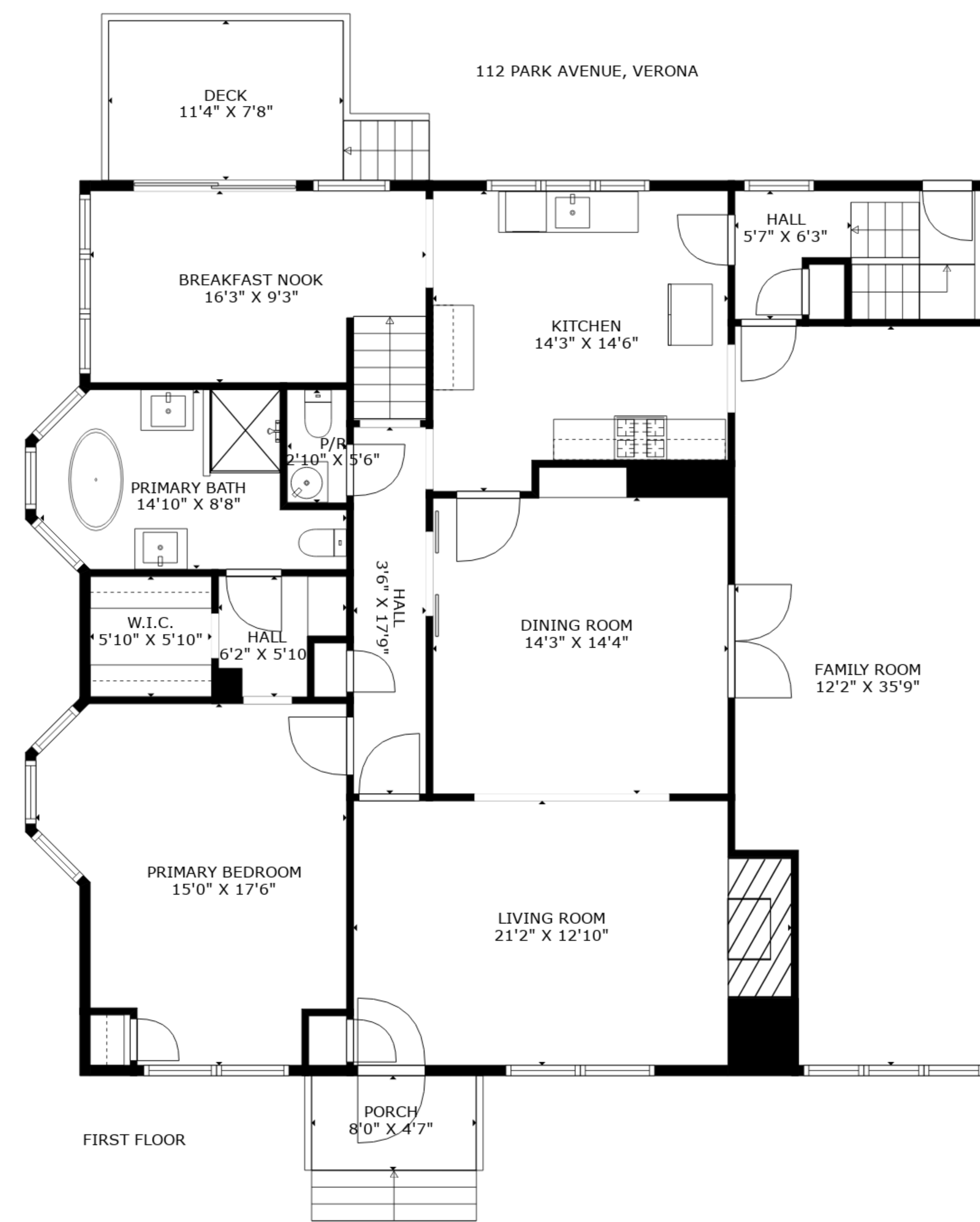
112 PARK AVENUE, VERONA



TOTAL: 3568 sq. ft
BELOW GROUND: 702 sq. ft, FIRST FLOOR: 1856 sq. ft, SECOND FLOOR: 1010 sq. ft
EXCLUDED AREAS: ROOM: 105 sq. ft, ELECTRICAL ROOM: 385 sq. ft, HALL: 12 sq. ft,
DECK: 88 sq. ft, PORCH: 37 sq. ft, ATTIC STORAGE: 284 sq. ft,
LOW CEILING: 150 sq. ft



TOTAL: 3568 sq. ft
 BELOW GROUND: 702 sq. ft, FIRST FLOOR: 1856 sq. ft, SECOND FLOOR: 1010 sq. ft
 EXCLUDED AREAS: ROOM: 105 sq. ft, ELECTRICAL ROOM: 385 sq. ft, HALL: 12 sq. ft,
 DECK: 88 sq. ft, PORCH: 37 sq. ft, ATTIC STORAGE: 284 sq. ft,
 LOW CEILING: 150 sq. ft



TOTAL: 3568 sq. ft
 BELOW GROUND: 702 sq. ft, FIRST FLOOR: 1856 sq. ft, SECOND FLOOR: 1010 sq. ft
 EXCLUDED AREAS: ROOM: 105 sq. ft, ELECTRICAL ROOM: 385 sq. ft, HALL: 12 sq. ft,
 DECK: 88 sq. ft, PORCH: 37 sq. ft, ATTIC STORAGE: 284 sq. ft,
 LOW CEILING: 150 sq. ft