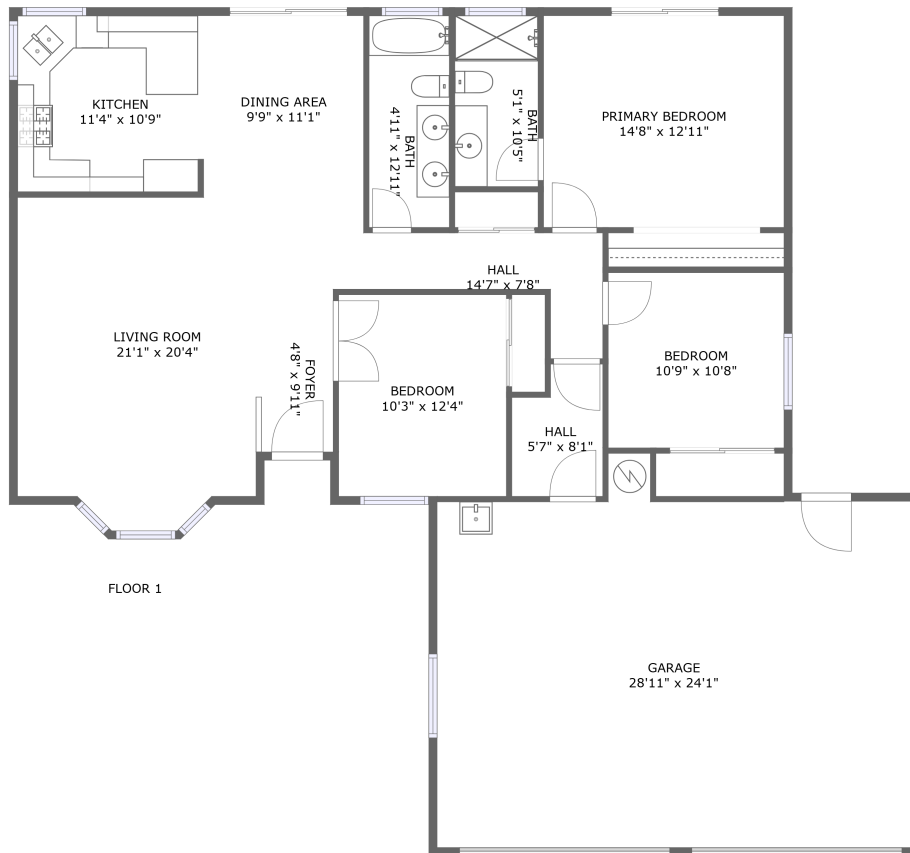


1952 Freshwater Drive, Lake California, Cottonwood, Tehama County, California, United



Property Summary



1 floors



3 bedrooms



2 bathrooms



2,097 total sqft

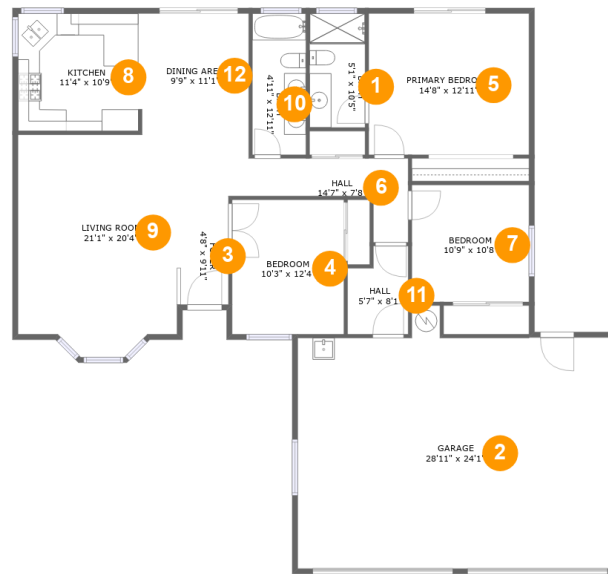


1 garages



1,439 Gross Living Area sqft

19852 Freshwater Drive, Lake California, Cottonwood, Tehama County, California, United



Room Dimensions

Floor 1

Total sqft: 2097

Living area: 1439

#	Room name	Dimensions	Area (sqft)	Counted as Living Area
1	Bath	5'1" x 10'5"	53 sq. ft	Yes
2	Garage	28'11" x 24'1"	618 sq. ft	No
3	Foyer	4'8" x 9'11"	47 sq. ft	Yes
4	Bedroom	10'3" x 12'4"	126 sq. ft	Yes
5	Primary Bedroom	14'8" x 12'11"	189 sq. ft	Yes
6	Hall	14'7" x 7'8"	64 sq. ft	Yes
7	Bedroom	10'9" x 10'8"	115 sq. ft	Yes
8	Kitchen	11'4" x 10'9"	121 sq. ft	Yes
9	Living Room	21'1" x 20'4"	315 sq. ft	Yes
10	Bath	4'11" x 12'11"	63 sq. ft	Yes
11	Hall	5'7" x 8'1"	40 sq. ft	Yes

Scan captured on Fri, 31 May 2024 16:53:15 GMT

Information is calculated by CubiCasa technology; deemed highly reliable but not guaranteed.

**19852 Freshwater Drive, Lake California,
Cottonwood, Tehama County, California, United**

#	Room name	Dimensions	Area (sqft)	Counted as Living Area
12	Dining Area	9'9" x 11'1"	108 sq. ft	Yes

19852 Freshwater Drive, Lake California, Cottonwood, Tehama County, California, United

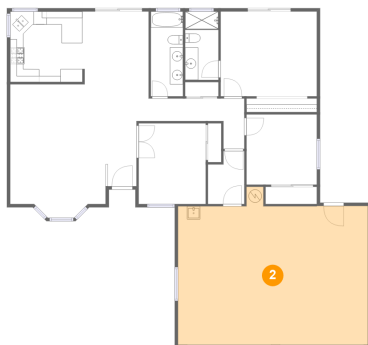
1 Floor 1 - Bath



Dimensions: 5'1" x 10'5"
Area: 53 sq. ft
Counted as Living Area:
Yes

Heated: Yes
Finished: Yes
Enclosed: Yes
Contiguous:
Yes
Permitted: Yes
Wet Space: Yes
Addition: No
Conversion: No

2 Floor 1 - Garage



Dimensions: 28'11" x 24'1"
Area: 618 sq. ft
Counted as Living Area: No

Heated: No
Finished: No
Enclosed: Yes
Contiguous: Yes
Permitted: Yes
Wet Space: No
Addition: No
Conversion: No

19852 Freshwater Drive, Lake California, Cottonwood, Tehama County, California, United

3 Floor 1 - Foyer



Dimensions: 4'8" x 9'11"
Area: 47 sq. ft
Counted as Living Area:
Yes

Heated: Yes
Finished: Yes
Enclosed: Yes
Contiguous:
Yes
Permitted: Yes
Wet Space: No
Addition: No
Conversion: No

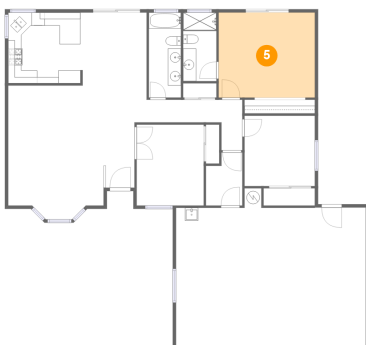
4 Floor 1 - Bedroom



Dimensions: 10'3" x 12'4"
Area: 126 sq. ft
Counted as Living Area:
Yes

Heated: Yes
Finished: Yes
Enclosed: Yes
Contiguous:
Yes
Permitted: Yes
Wet Space: No
Addition: No
Conversion: No

5 Floor 1 - Primary Bedroom



Dimensions: 14'8" x 12'11"
Area: 189 sq. ft
Counted as Living Area:
Yes

Heated: Yes
Finished: Yes
Enclosed: Yes
Contiguous:
Yes
Permitted: Yes
Wet Space: No
Addition: No
Conversion: No

19852 Freshwater Drive, Lake California, Cottonwood, Tehama County, California, United

6 Floor 1 - Hall



Dimensions: 14'7" x 7'8"
Area: 64 sq. ft
Counted as Living Area:
Yes

Heated: Yes
Finished: Yes
Enclosed: Yes
Contiguous:
Yes
Permitted: Yes
Wet Space: No
Addition: No
Conversion: No

7 Floor 1 - Bedroom



Dimensions: 10'9" x 10'8"
Area: 115 sq. ft
Counted as Living Area:
Yes

Heated: Yes
Finished: Yes
Enclosed: Yes
Contiguous:
Yes
Permitted: Yes
Wet Space: No
Addition: No
Conversion: No

8 Floor 1 - Kitchen

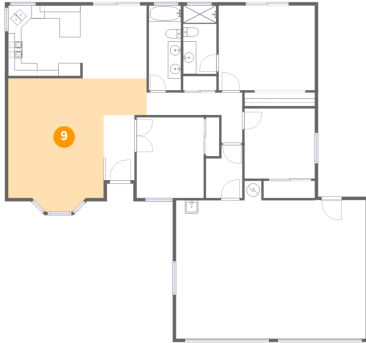


Dimensions: 11'4" x 10'9"
Area: 121 sq. ft
Counted as Living Area:
Yes

Heated: Yes
Finished: Yes
Enclosed: Yes
Contiguous:
Yes
Permitted: Yes
Wet Space: No
Addition: No
Conversion: No

19852 Freshwater Drive, Lake California, Cottonwood, Tehama County, California, United

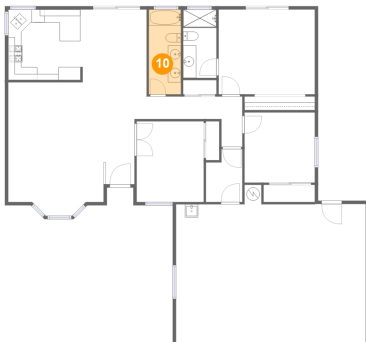
9 Floor 1 - Living Room



Dimensions: 21'1" x 20'4"
Area: 315 sq. ft
Counted as Living Area:
Yes

Heated: Yes
Finished: Yes
Enclosed: Yes
Contiguous:
Yes
Permitted: Yes
Wet Space: No
Addition: No
Conversion: No

10 Floor 1 - Bath



Dimensions: 4'11" x 12'11"
Area: 63 sq. ft
Counted as Living Area:
Yes

Heated: Yes
Finished: Yes
Enclosed: Yes
Contiguous:
Yes
Permitted: Yes
Wet Space: Yes
Addition: No
Conversion: No

11 Floor 1 - Hall

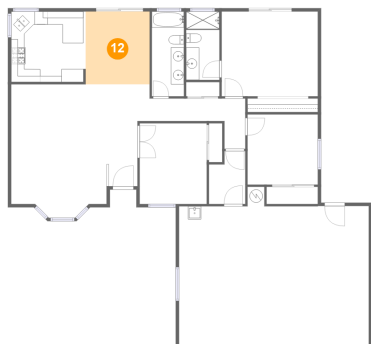


Dimensions: 5'7" x 8'1"
Area: 40 sq. ft
Counted as Living Area:
Yes

Heated: Yes
Finished: Yes
Enclosed: Yes
Contiguous:
Yes
Permitted: Yes
Wet Space: No
Addition: No
Conversion: No

19852 Freshwater Drive, Lake California, Cottonwood, Tehama County, California, United

12 Floor 1 - Dining Area



Dimensions: 9'9" x 11'1"
Area: 108 sq. ft
Counted as Living Area:
Yes

Heated: Yes
Finished: Yes
Enclosed: Yes
Contiguous:
Yes
Permitted: Yes
Wet Space: No
Addition: No
Conversion: No