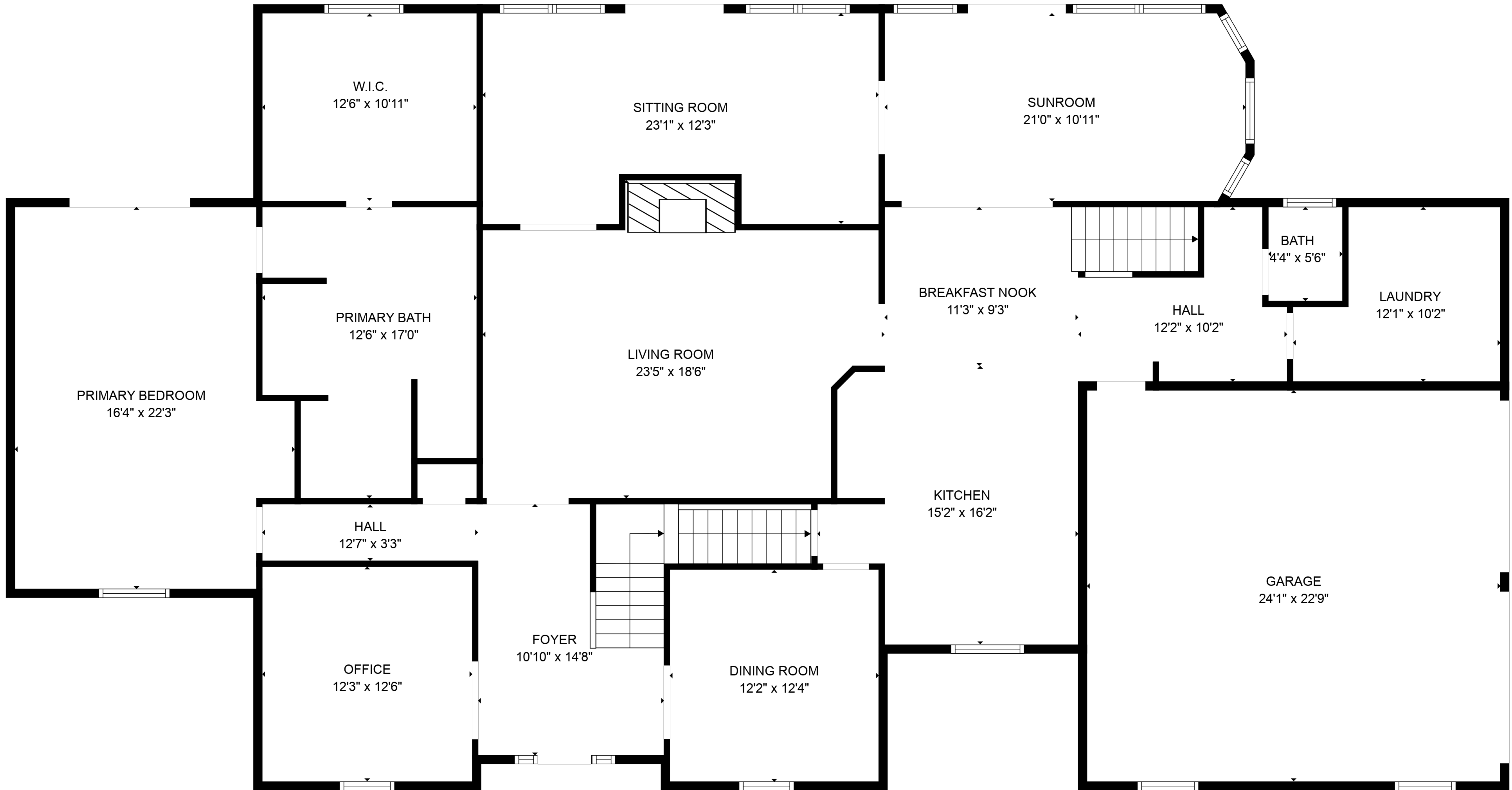


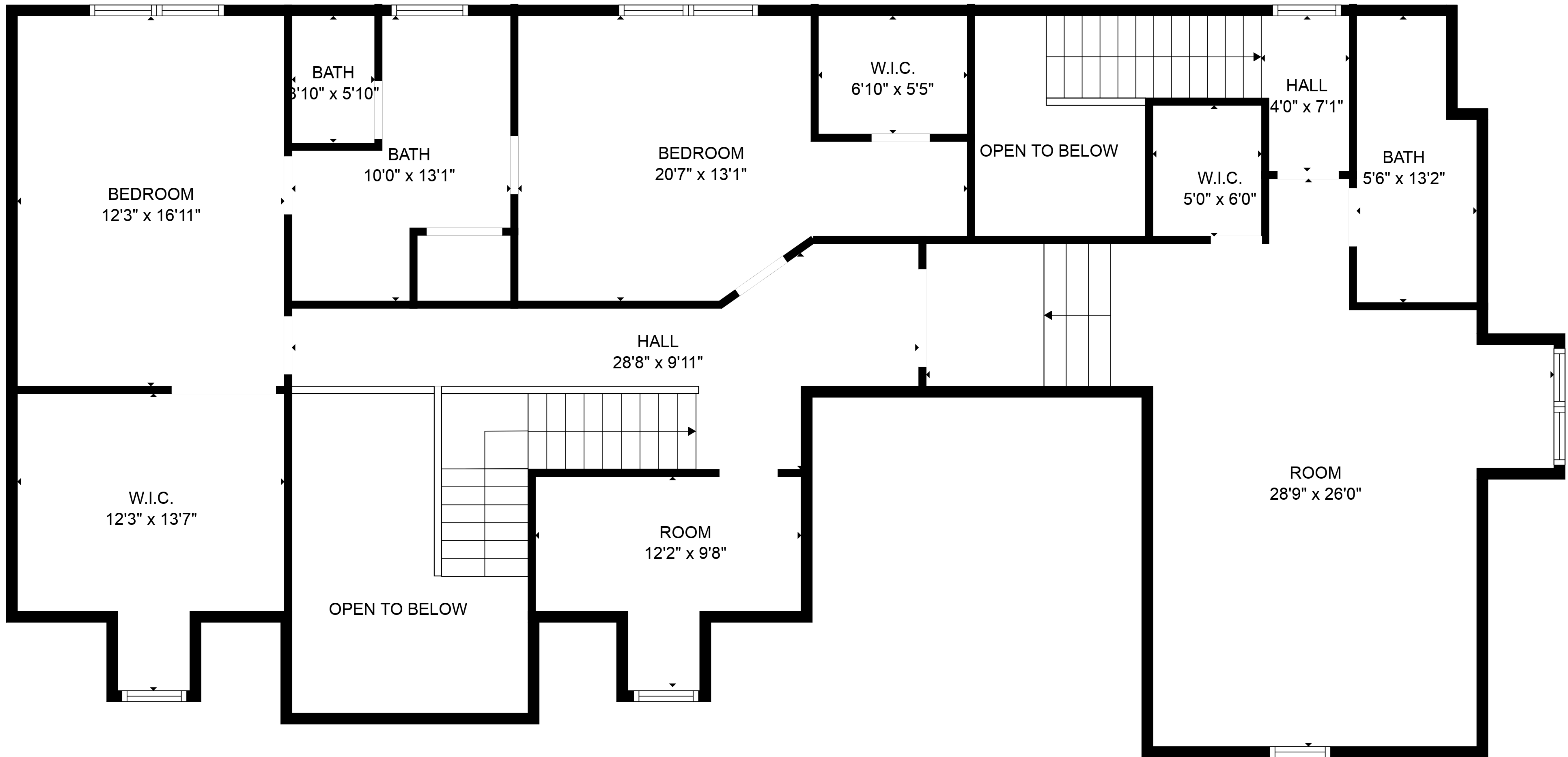
BASEMENT
20'2" x 12'10"

TOTAL: 4271 sq. ft
BELOW GROUND: 0 sq. ft, FLOOR 2: 2692 sq. ft, FLOOR 3: 1579 sq. ft
EXCLUDED AREAS: BASEMENT: 279 sq. ft, GARAGE: 549 sq. ft, OPEN TO BELOW: 184 sq. ft,
LOW CEILING: 73 sq. ft

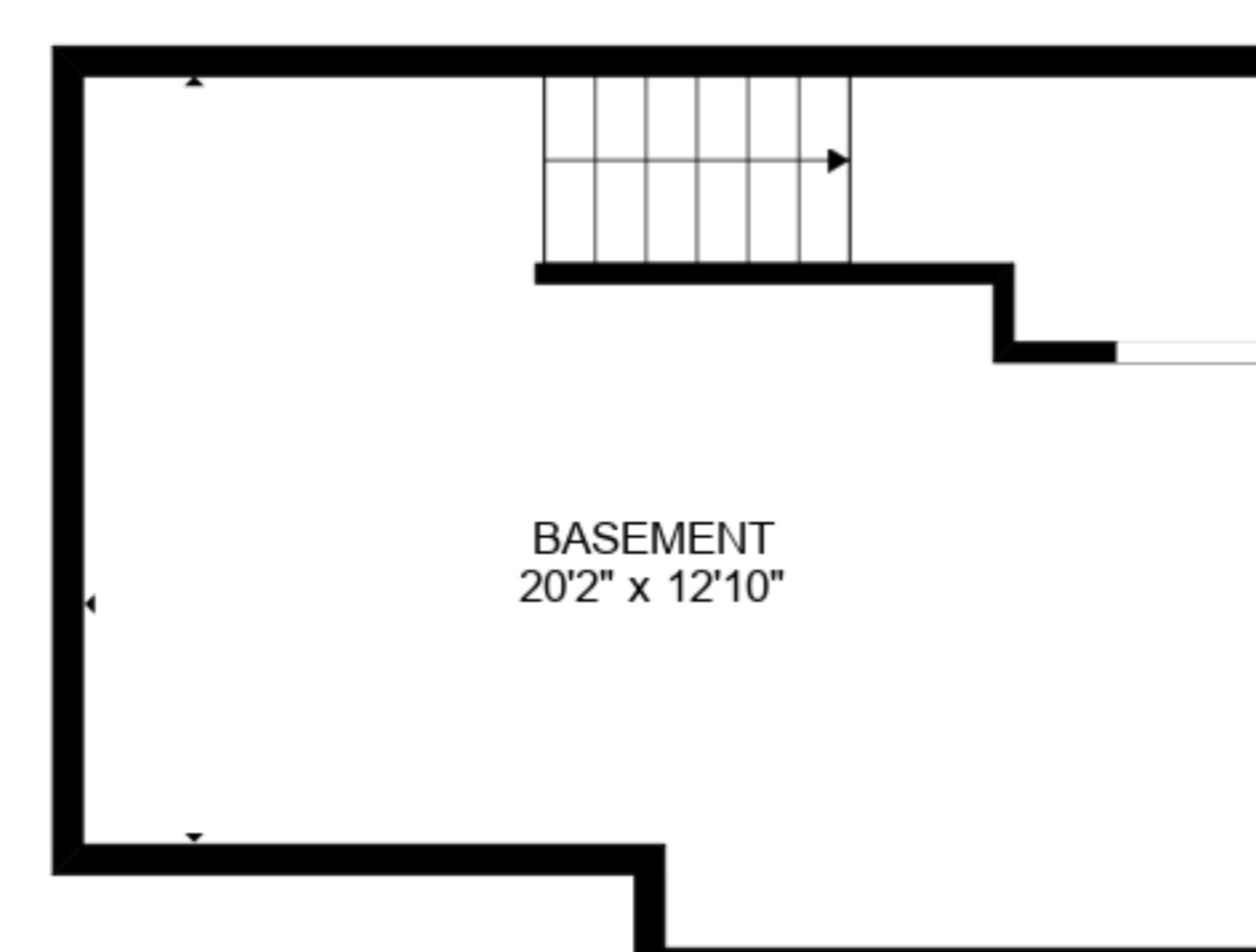
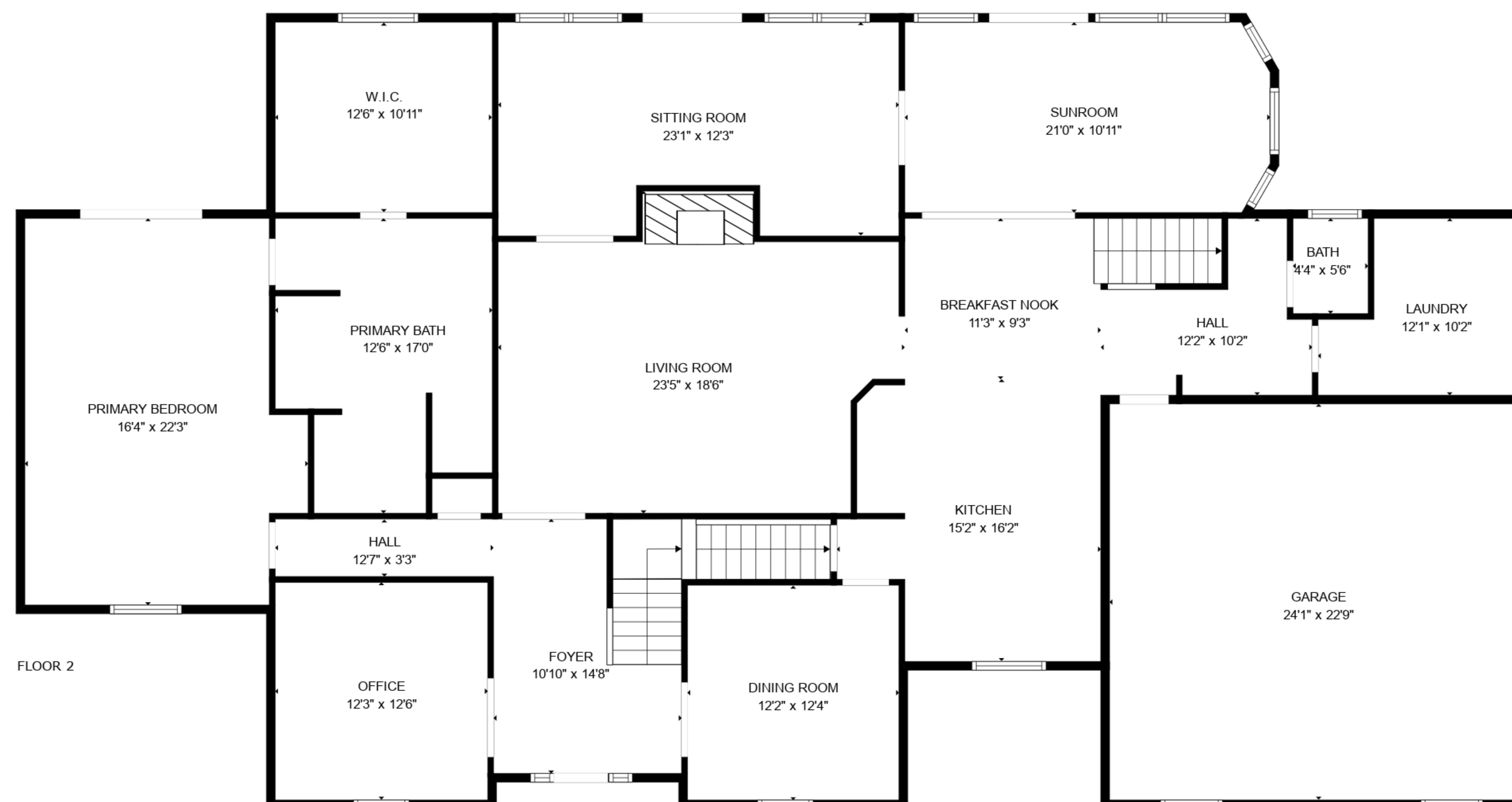
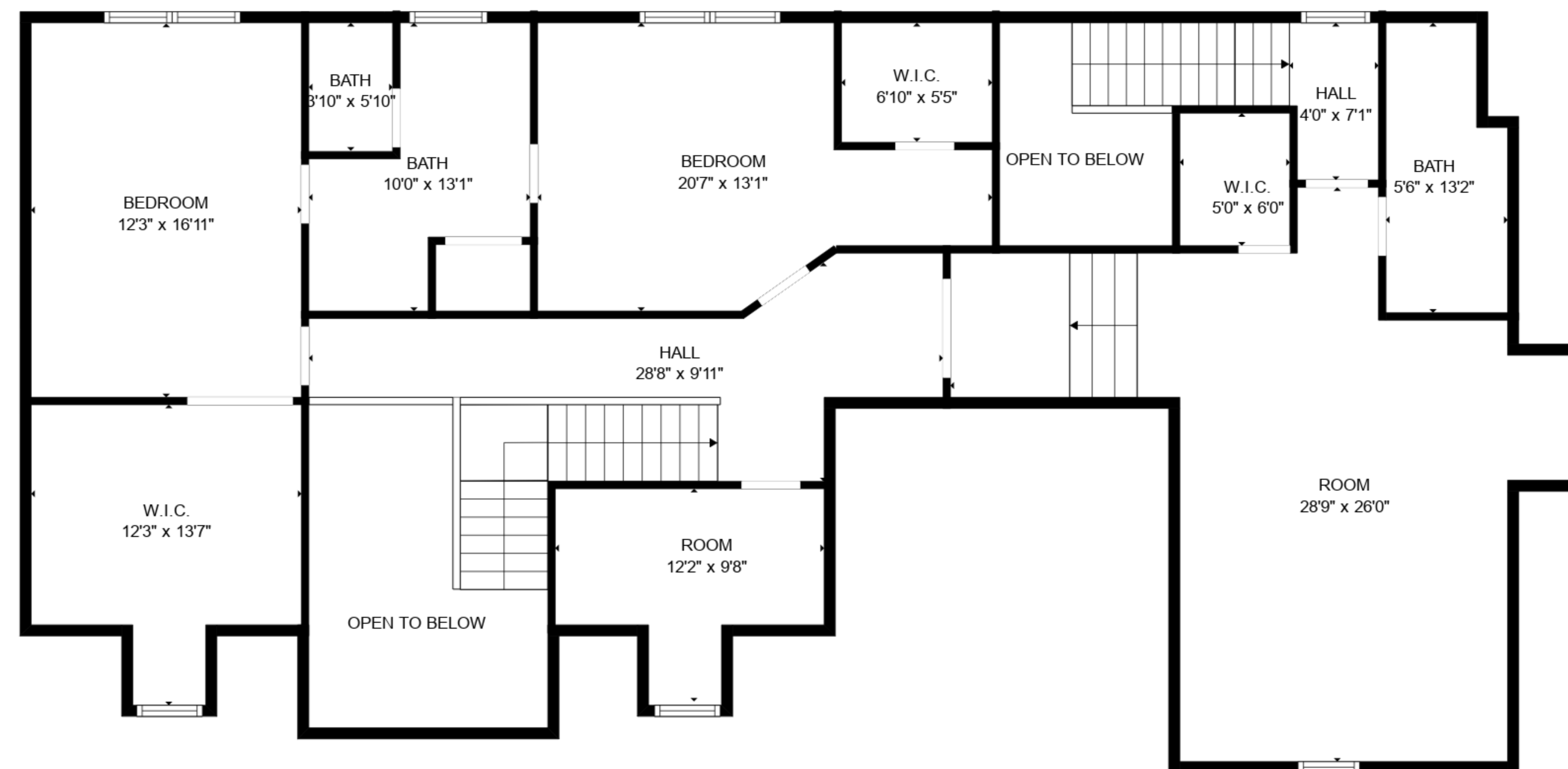


TOTAL: 4271 sq. ft

BELOW GROUND: 0 sq. ft, FLOOR 2: 2692 sq. ft, FLOOR 3: 1579 sq. ft
 EXCLUDED AREAS: BASEMENT: 279 sq. ft, GARAGE: 549 sq. ft, OPEN TO BELOW: 184 sq. ft,
 LOW CEILING: 73 sq. ft



TOTAL: 4271 sq. ft
 BELOW GROUND: 0 sq. ft, FLOOR 2: 2692 sq. ft, FLOOR 3: 1579 sq. ft
 EXCLUDED AREAS: BASEMENT: 279 sq. ft, GARAGE: 549 sq. ft, OPEN TO BELOW: 184 sq. ft,
 LOW CEILING: 73 sq. ft



TOTAL: 4271 sq. ft
 BELOW GROUND: 0 sq. ft, FLOOR 2: 2692 sq. ft, FLOOR 3: 1579 sq. ft
 EXCLUDED AREAS: BASEMENT: 279 sq. ft, GARAGE: 549 sq. ft, OPEN TO BELOW: 184 sq. ft,
 LOW CEILING: 73 sq. ft