

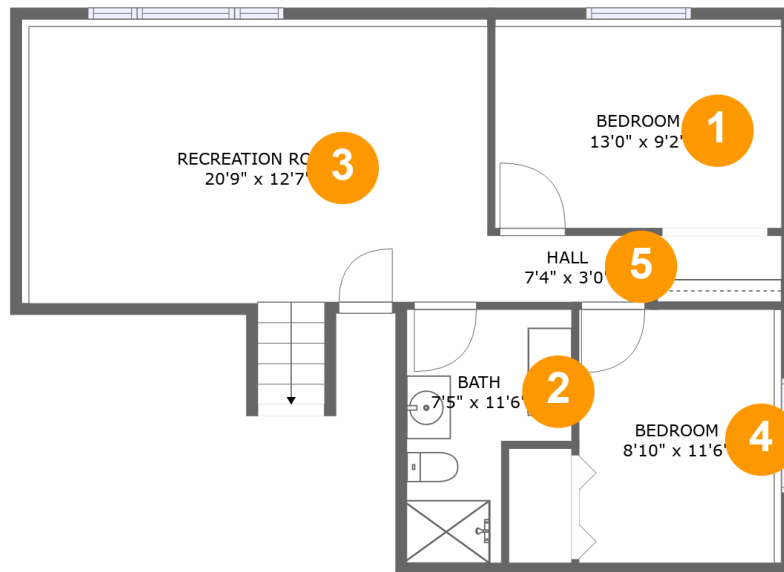
201 Ponderosa Dr, Spearfish, SD, US



Property summary

 **1** Garages  **4** Bedrooms  **2** Bathrooms  **0** Half baths

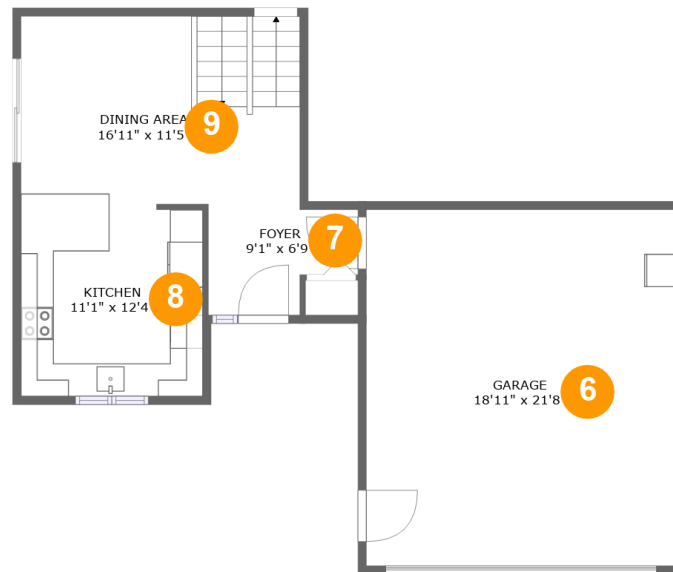
 **3** Floors  **1,876** Gross living area sqft  **2,323** Total sqft

201 Ponderosa Dr, Spearfish, SD, US**Room dimensions**

Floor 1

Total sqft: 722 Living area: 722

#		Dimensions	sqft	Counted as living area
1	Bedroom	13'0" x 9'2"	123 sq. ft	Yes
2	Bath	7'5" x 11'6"	68 sq. ft	Yes
3	Recreation Room	20'9" x 12'7"	286 sq. ft	Yes
4	Bedroom	8'10" x 11'6"	105 sq. ft	Yes
5	Hall	7'4" x 3'0"	22 sq. ft	Yes

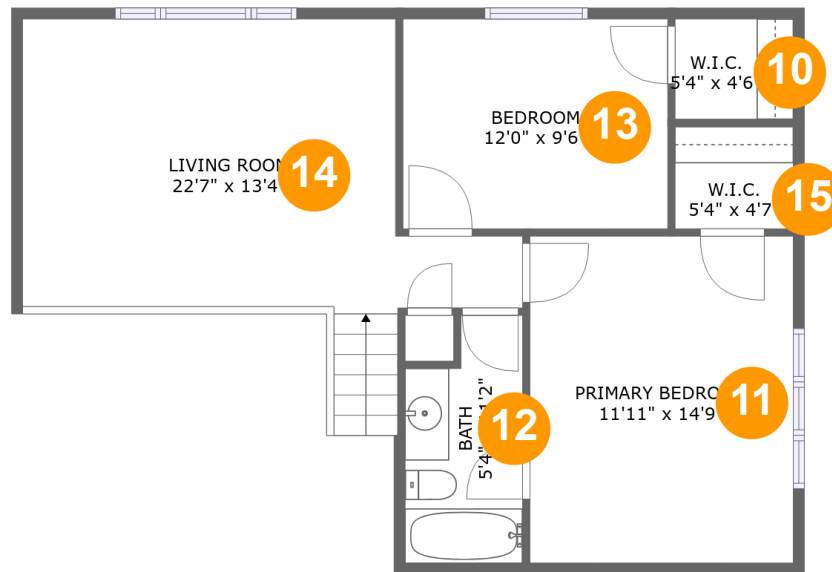
201 Ponderosa Dr, Spearfish, SD, US**Room dimensions**

Floor 2

Total sqft: 877 Living area: 430

#		Dimensions	sqft	Counted as living area
6	Garage	18'11" x 21'8"	409 sq. ft	No
7	Foyer	9'1" x 6'9"	52 sq. ft	Yes
8	Kitchen	11'1" x 12'4"	131 sq. ft	Yes
9	Dining Area	16'11" x 11'5"	190 sq. ft	Yes

201 Ponderosa Dr, Spearfish, SD, US



Room dimensions

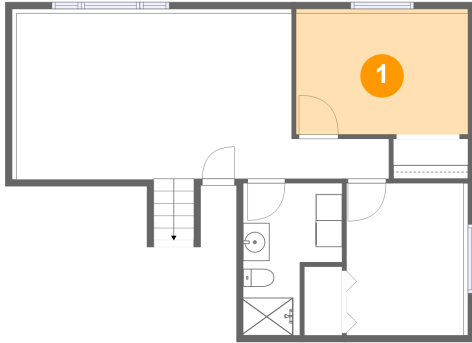
Floor 3

Total sqft: 724 Living area: 724

#		Dimensions	sqft	Counted as living area
10	W.I.C.	5'4" x 4'6"	24 sq. ft	Yes
11	Primary Bedroom	11'11" x 14'9"	176 sq. ft	Yes
12	Bath	5'4" x 11'2"	53 sq. ft	Yes
13	Bedroom	12'0" x 9'6"	113 sq. ft	Yes
14	Living Room	22'7" x 13'4"	254 sq. ft	Yes
15	W.I.C.	5'4" x 4'7"	25 sq. ft	Yes

201 Ponderosa Dr, Spearfish, SD, US

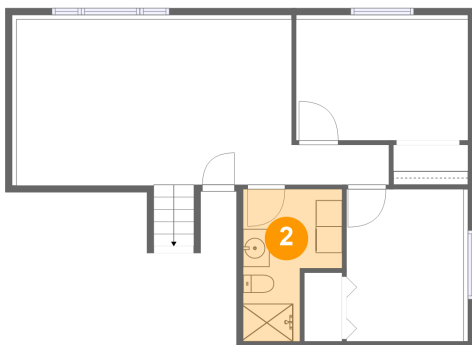
1 Floor 1 - Bedroom



Dimensions: 13'0" x 9'2"
Area: 123 sq. ft
Counted as living area: Yes

Heated: Yes
Finished: Yes
Enclosed: Yes
Contiguous: Yes
Permitted: Yes
Wet space: No
Addition: No
Conversion: No

2 Floor 1 - Bath

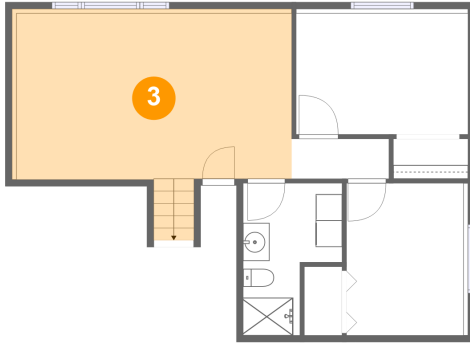


Dimensions: 7'5" x 11'6"
Area: 68 sq. ft
Counted as living area: Yes

Heated: Yes
Finished: Yes
Enclosed: Yes
Contiguous: Yes
Permitted: Yes
Wet space: Yes
Addition: No
Conversion: No

201 Ponderosa Dr, Spearfish, SD, US

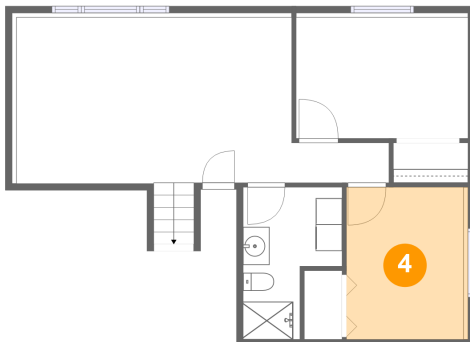
3 Floor 1 - Recreation Room



Dimensions: 20'9" x 12'7"
Area: 286 sq. ft
Counted as living area: Yes

Heated: Yes
Finished: Yes
Enclosed: Yes
Contiguous: Yes
Permitted: Yes
Wet space: No
Addition: No
Conversion: No

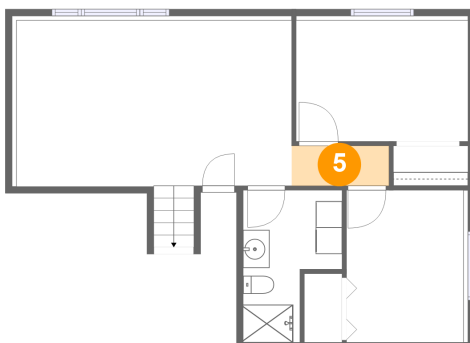
4 Floor 1 - Bedroom



Dimensions: 8'10" x 11'6"
Area: 105 sq. ft
Counted as living area: Yes

Heated: Yes
Finished: Yes
Enclosed: Yes
Contiguous: Yes
Permitted: Yes
Wet space: No
Addition: No
Conversion: No

5 Floor 1 - Hall

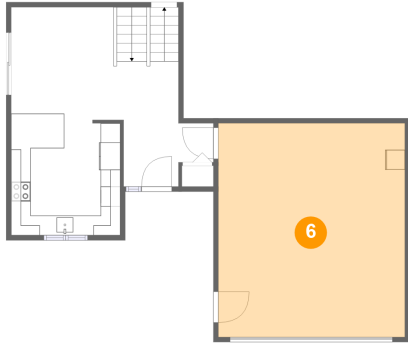


Dimensions: 7'4" x 3'0"
Area: 22 sq. ft
Counted as living area: Yes

Heated: Yes
Finished: Yes
Enclosed: Yes
Contiguous: Yes
Permitted: Yes
Wet space: No
Addition: No
Conversion: No

201 Ponderosa Dr, Spearfish, SD, US

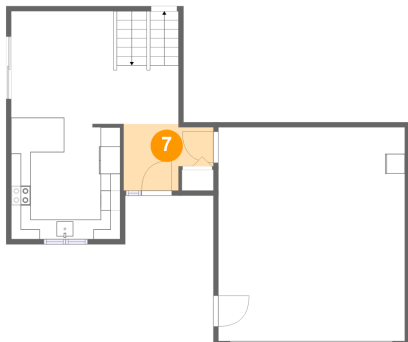
6 Floor 2 - Garage



Dimensions: 18'11" x 21'8"
Area: 409 sq. ft
Counted as living area: No

Heated: No
Finished: No
Enclosed: Yes
Contiguous: Yes
Permitted: Yes
Wet space: No
Addition: No
Conversion: No

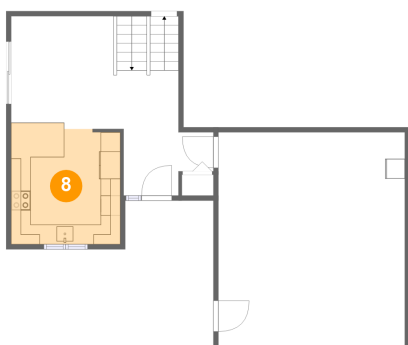
7 Floor 2 - Foyer



Dimensions: 9'1" x 6'9"
Area: 52 sq. ft
Counted as living area: Yes

Heated: Yes
Finished: Yes
Enclosed: Yes
Contiguous: Yes
Permitted: Yes
Wet space: No
Addition: No
Conversion: No

8 Floor 2 - Kitchen

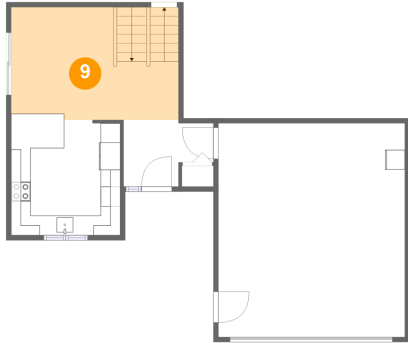


Dimensions: 11'1" x 12'4"
Area: 131 sq. ft
Counted as living area: Yes

Heated: Yes
Finished: Yes
Enclosed: Yes
Contiguous: Yes
Permitted: Yes
Wet space: No
Addition: No
Conversion: No

201 Ponderosa Dr, Spearfish, SD, US

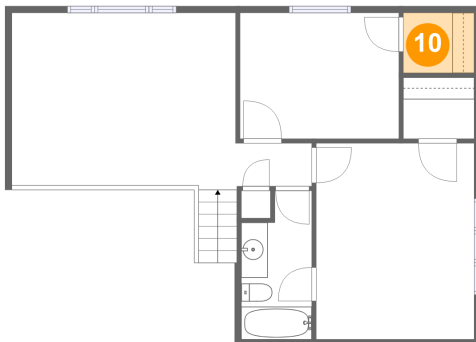
9 Floor 2 - Dining Area



Dimensions: 16'11" x 11'5"
Area: 190 sq. ft
Counted as living area: Yes

Heated: Yes
Finished: Yes
Enclosed: Yes
Contiguous: Yes
Permitted: Yes
Wet space: No
Addition: No
Conversion: No

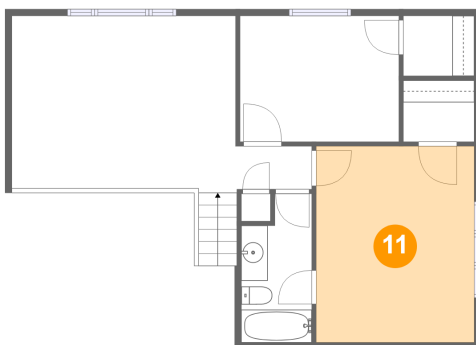
10 Floor 3 - W.I.C.



Dimensions: 5'4" x 4'6"
Area: 24 sq. ft
Counted as living area: Yes

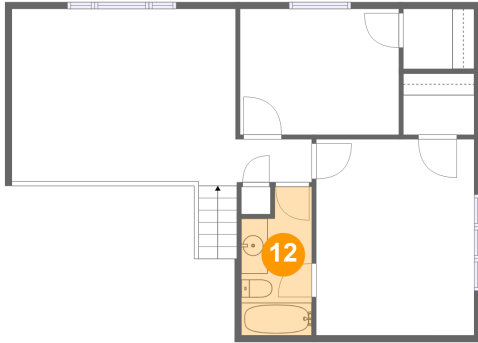
Heated: Yes
Finished: Yes
Enclosed: Yes
Contiguous: Yes
Permitted: Yes
Wet space: No
Addition: No
Conversion: No

11 Floor 3 - Primary Bedroom



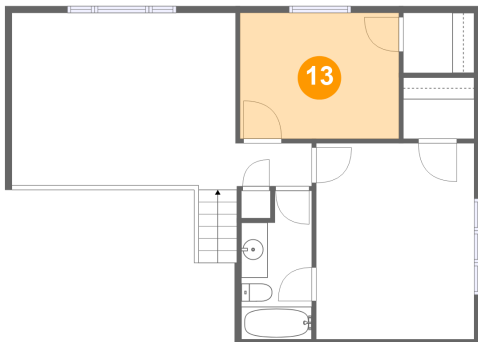
Dimensions: 11'11" x 14'9"
Area: 176 sq. ft
Counted as living area: Yes

Heated: Yes
Finished: Yes
Enclosed: Yes
Contiguous: Yes
Permitted: Yes
Wet space: No
Addition: No
Conversion: No

201 Ponderosa Dr, Spearfish, SD, US**12 Floor 3 - Bath**

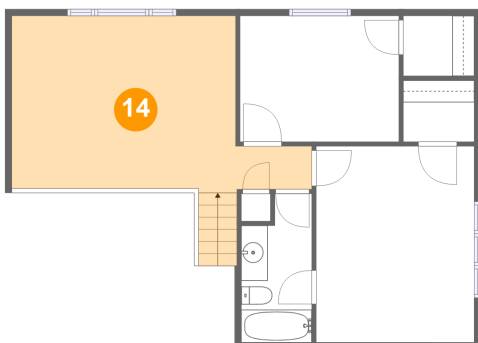
Dimensions: 5'4" x 11'2"
Area: 53 sq. ft
Counted as living area: Yes

Heated: Yes
Finished: Yes
Enclosed: Yes
Contiguous: Yes
Permitted: Yes
Wet space: Yes
Addition: No
Conversion: No

13 Floor 3 - Bedroom

Dimensions: 12'0" x 9'6"
Area: 113 sq. ft
Counted as living area: Yes

Heated: Yes
Finished: Yes
Enclosed: Yes
Contiguous: Yes
Permitted: Yes
Wet space: No
Addition: No
Conversion: No

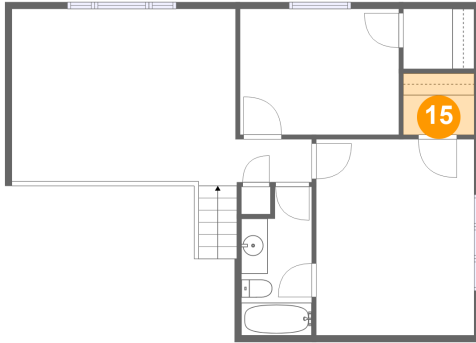
14 Floor 3 - Living Room

Dimensions: 22'7" x 13'4"
Area: 254 sq. ft
Counted as living area: Yes

Heated: Yes
Finished: Yes
Enclosed: Yes
Contiguous: Yes
Permitted: Yes
Wet space: No
Addition: No
Conversion: No

201 Ponderosa Dr, Spearfish, SD, US

15 Floor 3 - W.I.C.



Dimensions: 5'4" x 4'7"
Area: 25 sq. ft
Counted as living area: Yes

Heated: Yes
Finished: Yes
Enclosed: Yes
Contiguous: Yes
Permitted: Yes
Wet space: No
Addition: No
Conversion: No