



Home report


155 Meadow Drive, Brighton, Monroe County, New York, United States, 14618





Property summary


 **1** Garages


 **3** Bedrooms

 **1** Bathrooms

 **1** Half baths

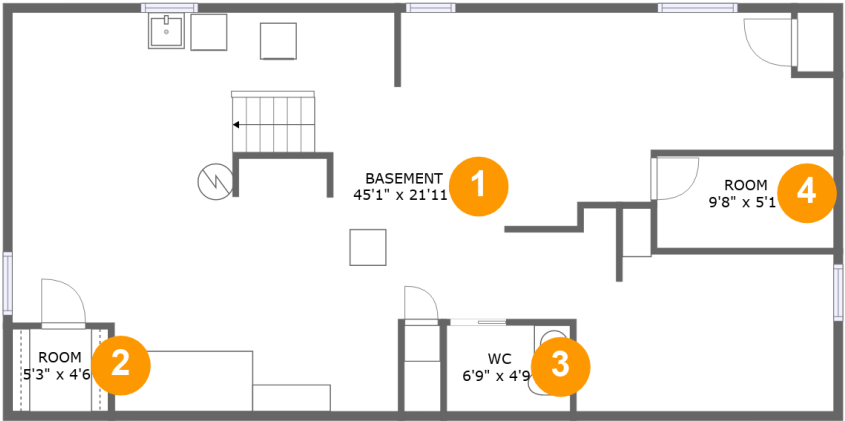
 **2** Floors

 **1,149** Gross living area sqft

 **2,668** Total sqft

Home report

155 Meadow Drive, Brighton, Monroe County, New York, United States, 14618



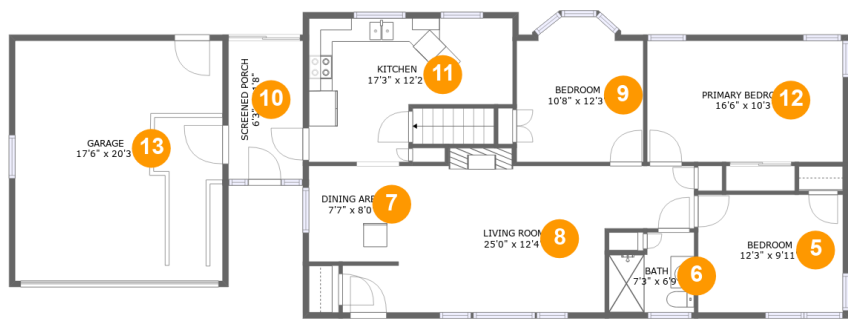
Room dimensions

Floor 1 Total sqft: 1045 Living area: 0

#		Dimensions	sqft	Counted as living area
1	Basement	45'1" x 21'11"	839 sq. ft	No
2	Room	5'3" x 4'6"	24 sq. ft	No
3	WC	6'9" x 4'9"	32 sq. ft	No
4	Room	9'8" x 5'1"	49 sq. ft	No

Home report

155 Meadow Drive, Brighton, Monroe County, New York, United States, 14618



Room dimensions

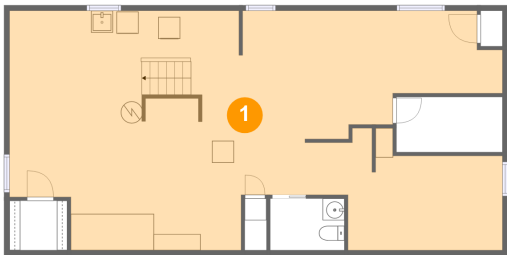
Floor 2

Total sqft: 1623 Living area: 1149

#		Dimensions	sqft	Counted as living area
5	Bedroom	12'3" x 9'11"	122 sq. ft	Yes
6	Bath	7'3" x 6'9"	43 sq. ft	Yes
7	Dining Area	7'7" x 8'0"	61 sq. ft	Yes
8	Living Room	25'0" x 12'4"	282 sq. ft	Yes
9	Bedroom	10'8" x 12'3"	120 sq. ft	Yes
10	Screened Porch	6'3" x 11'8"	74 sq. ft	No
11	Kitchen	17'3" x 12'2"	166 sq. ft	Yes
12	Primary Bedroom	16'6" x 10'3"	169 sq. ft	Yes
13	Garage	17'6" x 20'3"	355 sq. ft	No

155 Meadow Drive, Brighton, Monroe County, New York, United States, 14618

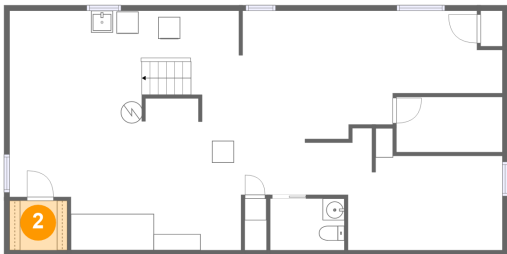
1 Floor 1 - Basement



Dimensions: 45'1" x 21'11"
Area: 839 sq. ft
Counted as living area: No

Heated: Yes
Finished: No
Enclosed: Yes
Contiguous: Yes
Permitted: Yes
Wet space: No
Addition: No
Conversion: No

2 Floor 1 - Room



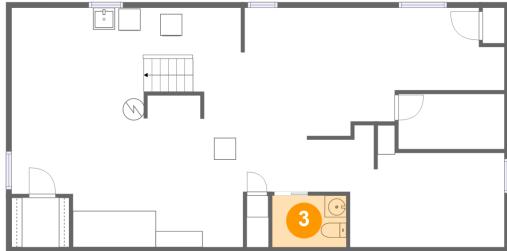
Dimensions: 5'3" x 4'6"
Area: 24 sq. ft
Counted as living area: No

Heated: Yes
Finished: No
Enclosed: Yes
Contiguous: Yes
Permitted: Yes
Wet space: No
Addition: No
Conversion: No

Home report

155 Meadow Drive, Brighton, Monroe County, New York, United States, 14618

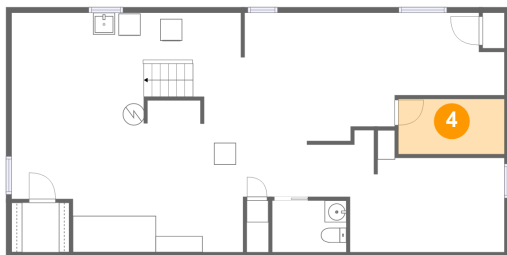
3 Floor 1 - WC



Dimensions: 6'9" x 4'9"
Area: 32 sq. ft
Counted as living area: No

Heated: Yes
Finished: Yes
Enclosed: Yes
Contiguous: No
Permitted: Yes
Wet space: Yes
Addition: No
Conversion: No

4 Floor 1 - Room



Dimensions: 9'8" x 5'1"
Area: 49 sq. ft
Counted as living area: No

Heated: Yes
Finished: No
Enclosed: Yes
Contiguous: Yes
Permitted: Yes
Wet space: No
Addition: No
Conversion: No

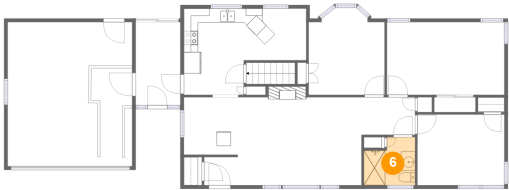
5 Floor 2 - Bedroom



Dimensions: 12'3" x 9'11"
Area: 122 sq. ft
Counted as living area: Yes

Heated: Yes
Finished: Yes
Enclosed: Yes
Contiguous: Yes
Permitted: Yes
Wet space: No
Addition: No
Conversion: No

6 Floor 2 - Bath



Dimensions: 7'3" x 6'9"
Area: 43 sq. ft
Counted as living area: Yes

Heated: Yes
Finished: Yes
Enclosed: Yes
Contiguous: Yes
Permitted: Yes
Wet space: Yes
Addition: No
Conversion: No

7 Floor 2 - Dining Area



Dimensions: 7'7" x 8'0"
Area: 61 sq. ft
Counted as living area: Yes

Heated: Yes
Finished: Yes
Enclosed: Yes
Contiguous: Yes
Permitted: Yes
Wet space: No
Addition: No
Conversion: No

8 Floor 2 - Living Room



Dimensions: 25'0" x 12'4"
Area: 282 sq. ft
Counted as living area: Yes

Heated: Yes
Finished: Yes
Enclosed: Yes
Contiguous: Yes
Permitted: Yes
Wet space: No
Addition: No
Conversion: No

155 Meadow Drive, Brighton, Monroe County, New York, United States, 14618

9 Floor 2 - Bedroom



Dimensions: 10'8" x 12'3"
Area: 120 sq. ft
Counted as living area: Yes

Heated: Yes
Finished: Yes
Enclosed: Yes
Contiguous: Yes
Permitted: Yes
Wet space: No
Addition: No
Conversion: No

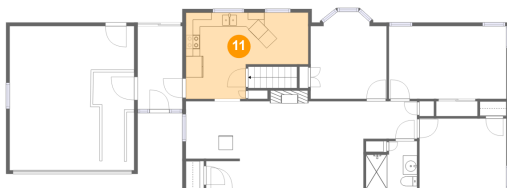
10 Floor 2 - Screened Porch



Dimensions: 6'3" x 11'8"
Area: 74 sq. ft
Counted as living area: No

Heated: No
Finished: Yes
Enclosed: No
Contiguous: Yes
Permitted: Yes
Wet space: No
Addition: No
Conversion: No

11 Floor 2 - Kitchen

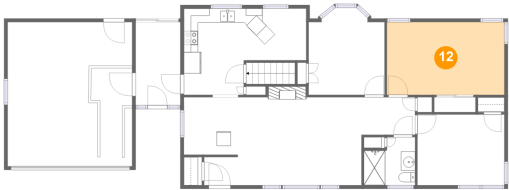


Dimensions: 17'3" x 12'2"
Area: 166 sq. ft
Counted as living area: Yes

Heated: Yes
Finished: Yes
Enclosed: Yes
Contiguous: Yes
Permitted: Yes
Wet space: No
Addition: No
Conversion: No

155 Meadow Drive, Brighton, Monroe County, New York, United States, 14618

12 Floor 2 - Primary Bedroom



Dimensions: 16'6" x 10'3"
Area: 169 sq. ft
Counted as living area: Yes

Heated: Yes
Finished: Yes
Enclosed: Yes
Contiguous: Yes
Permitted: Yes
Wet space: No
Addition: No
Conversion: No

13 Floor 2 - Garage



Dimensions: 17'6" x 20'3"
Area: 355 sq. ft
Counted as living area: No

Heated: No
Finished: No
Enclosed: Yes
Contiguous: Yes
Permitted: Yes
Wet space: No
Addition: No
Conversion: No