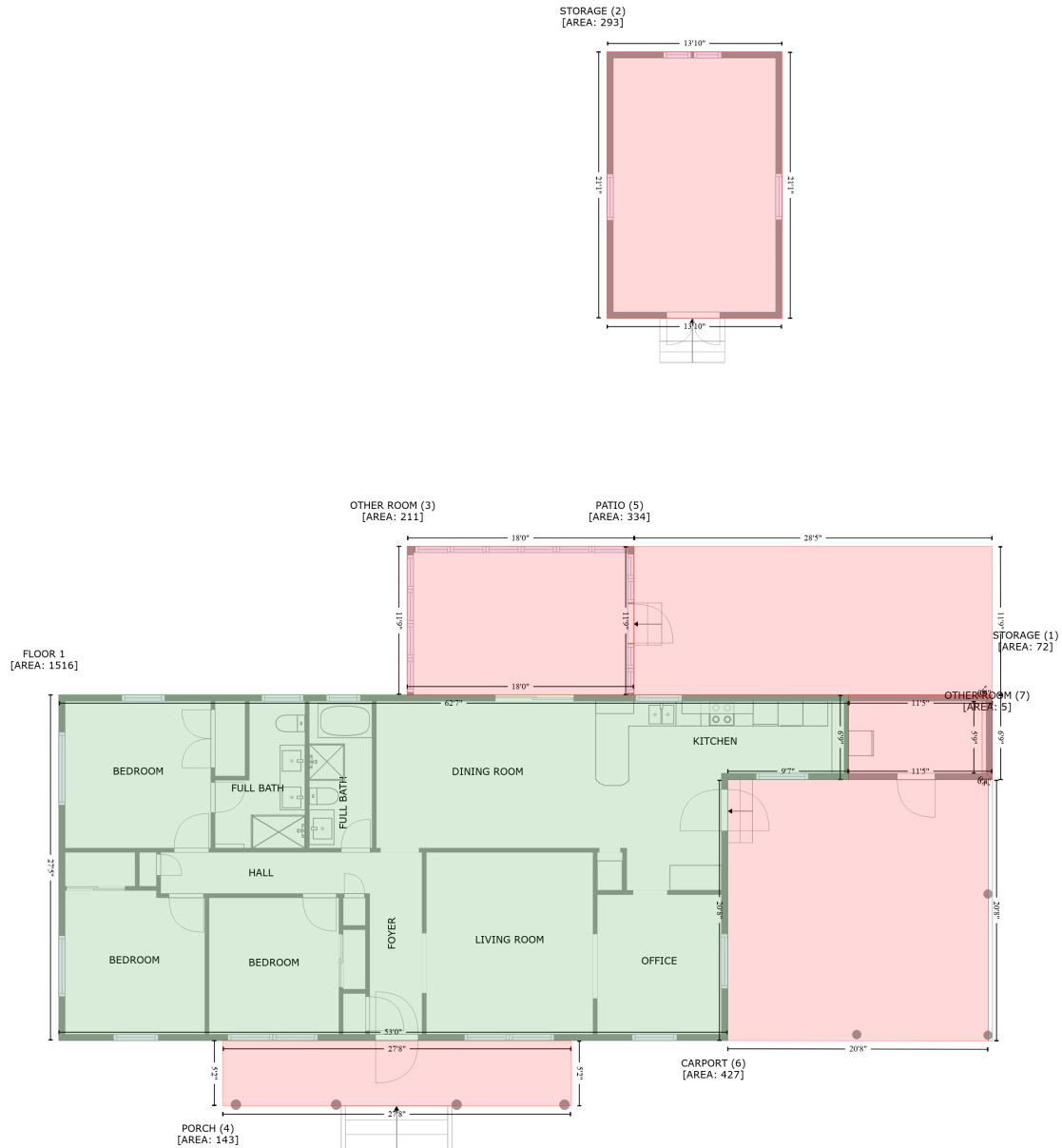


403 Butler Drive, Garner, Wake County, North Carolina, United States, 27529

Gross Living Area: 1516 sq. ft



Space	Area (sq. ft)	Calculation <small>Coordinate Polygon Area Algorithm using inches</small>
FLOOR 1 (Living area)	1516	$-\left((750.1 + 750.1) * (1170.4 - 1250.9) + (750.1 + 635.1) * (1250.9 - 1250.9) + (635.1 + 635.1) * (1250.9 - 1498.9) + (635.1 + -1.3) * (1498.9 - 1498.9) + (-1.3 + -1.3) * (1498.9 - 1170.4) + (-1.3 + 750.1) * (1170.4 - 1170.4)\right) * 0.5 * 0.00694$
STORAGE (Non-living area)	72	$-\left((887 + 881) * (1170.4 - 1176.4) + (881 + 877.2) * (1176.4 - 1176.4) + (877.2 + 877.2) * (1176.4 - 1244.9) + (877.2 + 881) * (1244.9 - 1244.9) + (881 + 887) * (1244.9 - 1250.9) + (887 + 750.1) * (1250.9 - 1250.9) + (750.1 + 750.1) * (1250.9 - 1170.4) + (750.1 + 887) * (1170.4 - 1170.4)\right) * 0.5$

403 Butler Drive, Garner, Wake County, North Carolina, United States, 27529

Gross Living Area: 1516 sq. ft

Space	Area (sq. ft)	Calculation <small>Coordinate Polygon Area Algorithm using inches</small>
		* 0.00694
STORAGE (Non-living area)	293	$-((686.8 + 686.8) * (559.3 - 812.6) + (686.8 + 520.3) * (812.6 - 812.6) + (520.3 + 520.3) * (812.6 - 559.3) + (520.3 + 686.8) * (559.3 - 559.3)) * 0.5 * 0.00694$
OTHER ROOM (Non-living area)	211	$-((546 + 546) * (1029.2 - 1170.4) + (546 + 330.2) * (1170.4 - 1170.4) + (330.2 + 330.2) * (1170.4 - 1029.2) + (330.2 + 546) * (1029.2 - 1029.2)) * 0.5 * 0.00694$
PORCH (Non-living area)	143	$-((486.1 + 486.1) * (1498.9 - 1561) + (486.1 + 154.6) * (1561 - 1561) + (154.6 + 154.6) * (1561 - 1498.9) + (154.6 + 486.1) * (1498.9 - 1498.9)) * 0.5 * 0.00694$
PATIO (Non-living area)	334	$-((886.7 + 887) * (1029.2 - 1170.4) + (887 + 546) * (1170.4 - 1170.4) + (546 + 546) * (1170.4 - 1029.2) + (546 + 886.7) * (1029.2 - 1029.2)) * 0.5 * 0.00694$
CARPORT (Non-living area)	427	$-((883 + 883) * (1250.9 - 1499.4) + (883 + 635.1) * (1499.4 - 1498.9) + (635.1 + 635.1) * (1498.9 - 1250.9) + (635.1 + 883) * (1250.9 - 1250.9)) * 0.5 * 0.00694$
OTHER ROOM (Non-living area)	5	$-((887 + 887) * (1170.4 - 1250.9) + (887 + 881) * (1250.9 - 1244.9) + (881 + 877.2) * (1244.9 - 1244.9) + (877.2 + 877.2) * (1244.9 - 1176.4) + (877.2 + 881) * (1176.4 - 1176.4) + (881 + 887) * (1176.4 - 1170.4)) * 0.5 * 0.00694$