



Home report


14 Cloister Lane, Webster, Monroe County, New York, United States, 14580




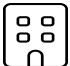
Property summary


 **1** Garages


 **3** Bedrooms

 **3** Bathrooms

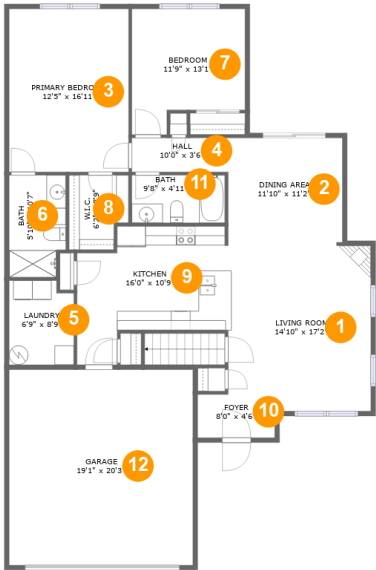
 **0** Half baths

 **2** Floors

 **1,848** Gross living area sqft

 **2,261** Total sqft

14 Cloister Lane, Webster, Monroe County, New York, United States, 14580



Room dimensions

Floor 1 Total sqft: 1782 Living area: 1369

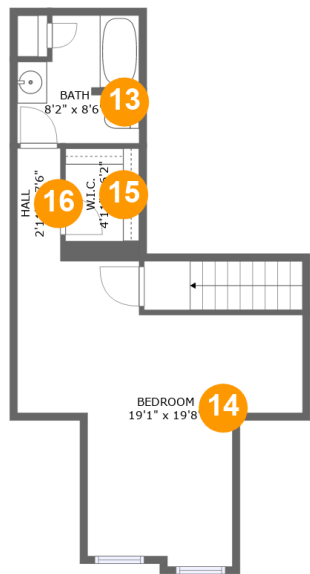
#		Max Dimensions	sqft	Included
1	Living Room	14'10" x 17'2"	244 sq. ft	Yes
2	Dining Area	11'10" x 11'2"	132 sq. ft	Yes
3	Primary Bedroom	12'5" x 16'11"	210 sq. ft	Yes
4	Hall	10'0" x 3'6"	35 sq. ft	Yes
5	Laundry	6'9" x 8'9"	56 sq. ft	Yes
6	Bath	5'10" x 10'7"	59 sq. ft	Yes
7	Bedroom	11'9" x 13'1"	133 sq. ft	Yes
8	W.I.C.	6'2" x 7'9"	44 sq. ft	Yes
9	Kitchen	16'0" x 10'9"	174 sq. ft	Yes
10	Foyer	8'0" x 4'6"	36 sq. ft	Yes
11	Bath	9'8" x 4'11"	48 sq. ft	Yes

Home report

14 Cloister Lane, Webster, Monroe County, New York, United States, 14580

#		Max Dimensions	sqft	Included
12	Garage	19'1" x 20'3"	387 sq. ft	No

14 Cloister Lane, Webster, Monroe County, New York, United States, 14580



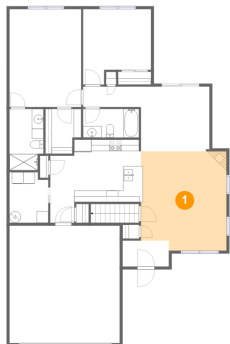
Room dimensions

Floor 2 Total sqft: 479 Living area: 479

#		Max Dimensions	sqft	Included
13	Bath	8'2" x 8'6"	61 sq. ft	Yes
14	Bedroom	19'1" x 19'8"	250 sq. ft	Yes
15	W.I.C.	4'11" x 6'2"	35 sq. ft	Yes
16	Hall	2'11" x 7'6"	22 sq. ft	Yes

14 Cloister Lane, Webster, Monroe County, New York, United States, 14580

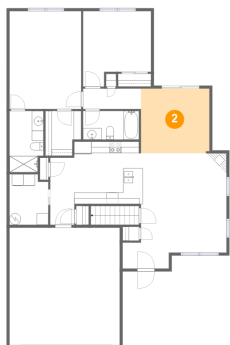
1 Floor 1 - Living Room



Max Dimensions: 14'10" x 17'2"
Calculated Area: 244 sq. ft
Included: Yes

Heated: Yes
Finished: Yes
Enclosed: Yes
Contiguous: Yes
Permitted: Yes
Wet space: No
Addition: No
Conversion: No

2 Floor 1 - Dining Area



Max Dimensions: 11'10" x 11'2"
Calculated Area: 132 sq. ft
Included: Yes

Heated: Yes
Finished: Yes
Enclosed: Yes
Contiguous: Yes
Permitted: Yes
Wet space: No
Addition: No
Conversion: No

14 Cloister Lane, Webster, Monroe County, New York, United States, 14580

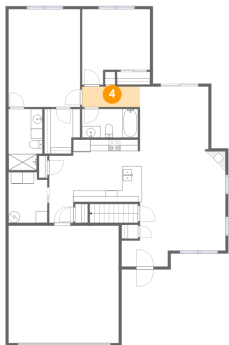
3 Floor 1 - Primary Bedroom



Max Dimensions: 12'5" x 16'11"
Calculated Area: 210 sq. ft
Included: Yes

Heated: Yes
Finished: Yes
Enclosed: Yes
Contiguous: Yes
Permitted: Yes
Wet space: No
Addition: No
Conversion: No

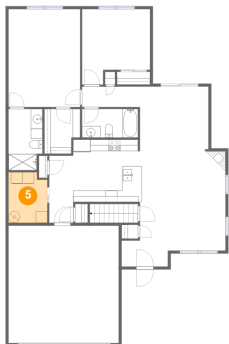
4 Floor 1 - Hall



Max Dimensions: 10'0" x 3'6"
Calculated Area: 35 sq. ft
Included: Yes

Heated: Yes
Finished: Yes
Enclosed: Yes
Contiguous: Yes
Permitted: Yes
Wet space: No
Addition: No
Conversion: No

5 Floor 1 - Laundry

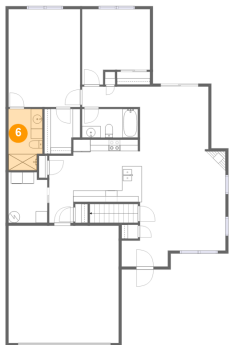


Max Dimensions: 6'9" x 8'9"
Calculated Area: 56 sq. ft
Included: Yes

Heated: Yes
Finished: Yes
Enclosed: Yes
Contiguous: Yes
Permitted: Yes
Wet space: No
Addition: No
Conversion: No

14 Cloister Lane, Webster, Monroe County, New York, United States, 14580

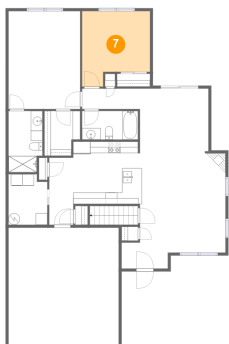
6 Floor 1 - Bath



Max Dimensions: 5'10" x 10'7"
Calculated Area: 59 sq. ft
Included: Yes

Heated: Yes
Finished: Yes
Enclosed: Yes
Contiguous: Yes
Permitted: Yes
Wet space: Yes
Addition: No
Conversion: No

7 Floor 1 - Bedroom



Max Dimensions: 11'9" x 13'1"
Calculated Area: 133 sq. ft
Included: Yes

Heated: Yes
Finished: Yes
Enclosed: Yes
Contiguous: Yes
Permitted: Yes
Wet space: No
Addition: No
Conversion: No

8 Floor 1 - W.I.C.

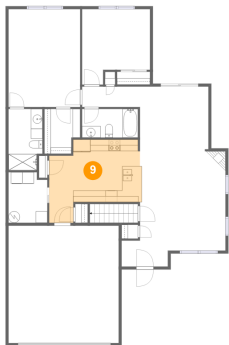


Max Dimensions: 6'2" x 7'9"
Calculated Area: 44 sq. ft
Included: Yes

Heated: Yes
Finished: Yes
Enclosed: Yes
Contiguous: Yes
Permitted: Yes
Wet space: No
Addition: No
Conversion: No

14 Cloister Lane, Webster, Monroe County, New York, United States, 14580

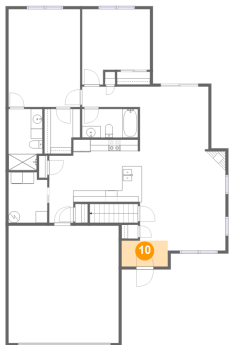
9 Floor 1 - Kitchen



Max Dimensions: 16'0" x 10'9"
Calculated Area: 174 sq. ft
Included: Yes

Heated: Yes
Finished: Yes
Enclosed: Yes
Contiguous: Yes
Permitted: Yes
Wet space: No
Addition: No
Conversion: No

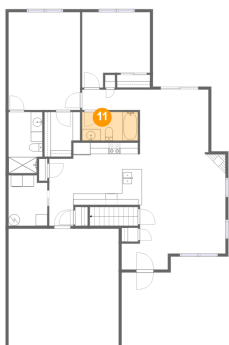
10 Floor 1 - Foyer



Max Dimensions: 8'0" x 4'6"
Calculated Area: 36 sq. ft
Included: Yes

Heated: Yes
Finished: Yes
Enclosed: Yes
Contiguous: Yes
Permitted: Yes
Wet space: No
Addition: No
Conversion: No

11 Floor 1 - Bath

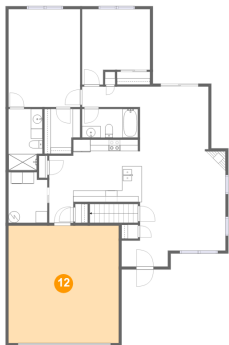


Max Dimensions: 9'8" x 4'11"
Calculated Area: 48 sq. ft
Included: Yes

Heated: Yes
Finished: Yes
Enclosed: Yes
Contiguous: Yes
Permitted: Yes
Wet space: Yes
Addition: No
Conversion: No

14 Cloister Lane, Webster, Monroe County, New York, United States, 14580

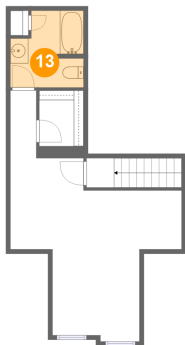
12 Floor 1 - Garage



Max Dimensions: 19'1" x 20'3"
Calculated Area: 387 sq. ft
Included: No

Heated: No
Finished: No
Enclosed: Yes
Contiguous: Yes
Permitted: Yes
Wet space: No
Addition: No
Conversion: No

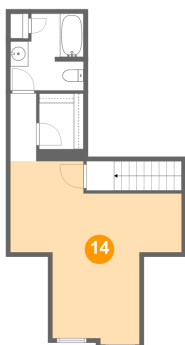
13 Floor 2 - Bath



Max Dimensions: 8'2" x 8'6"
Calculated Area: 61 sq. ft
Included: Yes

Heated: Yes
Finished: Yes
Enclosed: Yes
Contiguous: Yes
Permitted: Yes
Wet space: Yes
Addition: No
Conversion: No

14 Floor 2 - Bedroom



Max Dimensions: 19'1" x 19'8"
Calculated Area: 250 sq. ft
Included: Yes

Heated: Yes
Finished: Yes
Enclosed: Yes
Contiguous: Yes
Permitted: Yes
Wet space: No
Addition: No
Conversion: No

14 Cloister Lane, Webster, Monroe County, New York, United States, 14580

15 Floor 2 - W.I.C.



Max Dimensions: 4'11" x 6'2"
Calculated Area: 35 sq. ft
Included: Yes

Heated: Yes
Finished: Yes
Enclosed: Yes
Contiguous: Yes
Permitted: Yes
Wet space: No
Addition: No
Conversion: No

16 Floor 2 - Hall



Max Dimensions: 2'11" x 7'6"
Calculated Area: 22 sq. ft
Included: Yes

Heated: Yes
Finished: Yes
Enclosed: Yes
Contiguous: Yes
Permitted: Yes
Wet space: No
Addition: No
Conversion: No