

17905 Machair Lane, Ballantrae, Land O'Lakes, Pasco County, Florida, United States, 34638

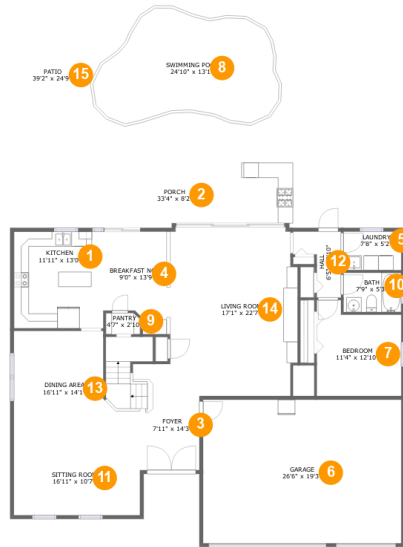


Property Summary

1 garages **5** bedrooms **3** bathrooms **0** half baths

2 floors **3,402** Gross Living Area sqft **5,155** total sqft

17905 Machair Lane, Ballantrae, Land O'Lakes, Pasco County, Florida, United States, 34638



Room Dimensions

Floor 1

Total sqft: 3075

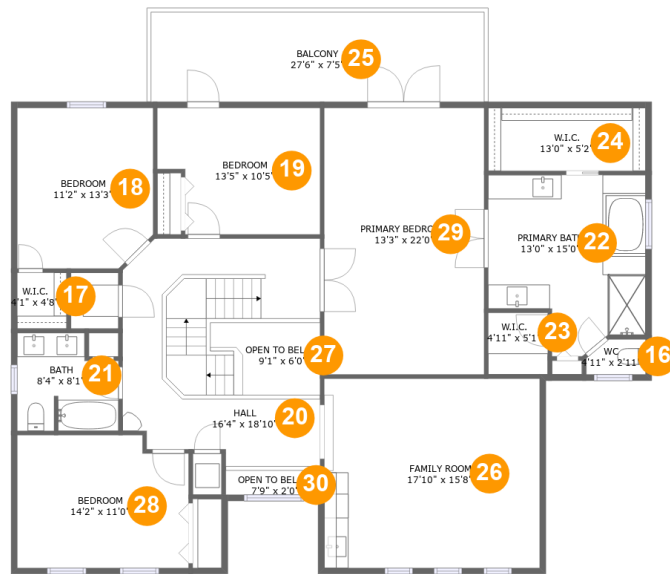
Living area: 1590

#	Room name	Dimensions	Area (sqft)	Counted as Living Area
1	Kitchen	11'11" x 13'0"	155 sq. ft	Yes
2	Porch	33'4" x 8'2"	267 sq. ft	No
3	Foyer	7'11" x 14'3"	154 sq. ft	Yes
4	Breakfast Nook	9'0" x 13'9"	107 sq. ft	Yes
5	Laundry	7'8" x 5'2"	40 sq. ft	Yes
6	Garage	26'6" x 19'3"	510 sq. ft	No
7	Bedroom	11'4" x 12'10"	129 sq. ft	Yes
8	Swimming Pool	24'10" x 13'1"	290 sq. ft	No
9	Pantry	4'7" x 2'10"	13 sq. ft	Yes
10	Bath	7'9" x 5'3"	41 sq. ft	Yes
11	Sitting Room	16'11" x 10'7"	178 sq. ft	Yes

**17905 Machair Lane, Ballantrae, Land O'Lakes,
Pasco County, Florida, United States, 34638**

#	Room name	Dimensions	Area (sqft)	Counted as Living Area
12	Hall	6'5" x 8'10"	38 sq. ft	Yes
13	Dining Area	16'11" x 14'1"	187 sq. ft	Yes
14	Living Room	17'1" x 22'7"	367 sq. ft	Yes
15	Patio	39'2" x 24'9"	970 sq. ft	No

17905 Machair Lane, Ballantrae, Land O'Lakes, Pasco County, Florida, United States, 34638



Room Dimensions

Floor 2

Total sqft: 2080

Living area: 1812

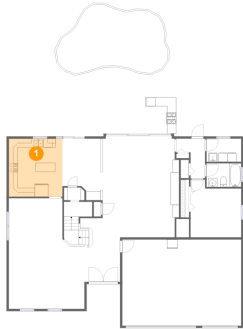
#	Room name	Dimensions	Area (sqft)	Counted as Living Area
16	Wc	4'11" x 2'11"	13 sq. ft	Yes
17	W.i.c.	4'1" x 4'8"	19 sq. ft	Yes
18	Bedroom	11'2" x 13'3"	145 sq. ft	Yes
19	Bedroom	13'5" x 10'5"	128 sq. ft	Yes
20	Hall	16'4" x 18'10"	247 sq. ft	Yes
21	Bath	8'4" x 8'1"	60 sq. ft	Yes
22	Primary Bath	13'0" x 15'0"	167 sq. ft	Yes
23	W.i.c.	4'11" x 5'1"	25 sq. ft	Yes
24	W.i.c.	13'0" x 5'2"	68 sq. ft	Yes
25	Balcony	27'6" x 7'5"	204 sq. ft	No
26	Family Room	17'10" x 15'8"	278 sq. ft	Yes

**17905 Machair Lane, Ballantrae, Land O'Lakes,
Pasco County, Florida, United States, 34638**

#	Room name	Dimensions	Area (sqft)	Counted as Living Area
27	Open To Below	9'1" x 6'0"	44 sq. ft	No
28	Bedroom	14'2" x 11'0"	149 sq. ft	Yes
29	Primary Bedroom	13'3" x 22'0"	291 sq. ft	Yes
30	Open To Below	7'9" x 2'0"	16 sq. ft	No

17905 Machair Lane, Ballantrae, Land O'Lakes, Pasco County, Florida, United States, 34638

1 Floor 1 - Kitchen



Dimensions: 11'11" x 13'0"
Area: 155 sq. ft
Counted as Living Area:
Yes

Heated: Yes
Finished: Yes
Enclosed: Yes
Contiguous:
Yes
Permitted: Yes
Wet Space: No
Addition: No
Conversion: No

2 Floor 1 - Porch



Dimensions: 33'4" x 8'2"
Area: 267 sq. ft
Counted as Living Area: No

Heated: No
Finished: Yes
Enclosed: No
Contiguous: Yes
Permitted: Yes
Wet Space: No
Addition: No
Conversion: No

17905 Machair Lane, Ballantrae, Land O'Lakes, Pasco County, Florida, United States, 34638

3 Floor 1 - Foyer



Dimensions: 7'11" x 14'3"
Area: 154 sq. ft
Counted as Living Area:
Yes

Heated: Yes
Finished: Yes
Enclosed: Yes
Contiguous:
Yes
Permitted: Yes
Wet Space: No
Addition: No
Conversion: No

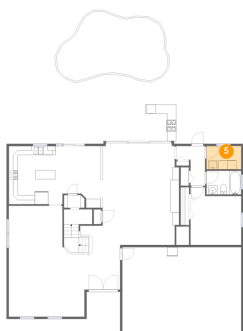
4 Floor 1 - Breakfast Nook



Dimensions: 9'0" x 13'9"
Area: 107 sq. ft
Counted as Living Area:
Yes

Heated: Yes
Finished: Yes
Enclosed: Yes
Contiguous:
Yes
Permitted: Yes
Wet Space: No
Addition: No
Conversion: No

5 Floor 1 - Laundry



Dimensions: 7'8" x 5'2"
Area: 40 sq. ft
Counted as Living Area:
Yes

Heated: Yes
Finished: Yes
Enclosed: Yes
Contiguous:
Yes
Permitted: Yes
Wet Space: No
Addition: No
Conversion: No

17905 Machair Lane, Ballantrae, Land O'Lakes, Pasco County, Florida, United States, 34638

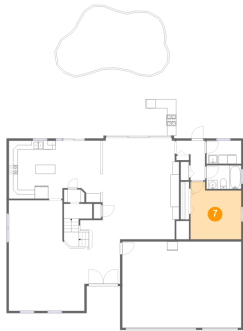
6 Floor 1 - Garage



Dimensions: 26'6" x 19'3"
Area: 510 sq. ft
Counted as Living Area: No

Heated: No
Finished: No
Enclosed: Yes
Contiguous: Yes
Permitted: Yes
Wet Space: No
Addition: No
Conversion: No

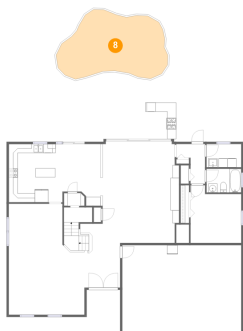
7 Floor 1 - Bedroom



Dimensions: 11'4" x 12'10"
Area: 129 sq. ft
Counted as Living Area:
Yes

Heated: Yes
Finished: Yes
Enclosed: Yes
Contiguous:
Yes
Permitted: Yes
Wet Space: No
Addition: No
Conversion: No

8 Floor 1 - Swimming Pool



Dimensions: 24'10" x 13'1"
Area: 290 sq. ft
Counted as Living Area: No

Heated: No
Finished: No
Enclosed: No
Contiguous: Yes
Permitted: No
Wet Space: No
Addition: No
Conversion: No

17905 Machair Lane, Ballantrae, Land O'Lakes, Pasco County, Florida, United States, 34638

9 Floor 1 - Pantry



Dimensions: 4'7" x 2'10"
Area: 13 sq. ft
Counted as Living Area:
Yes

Heated: Yes
Finished: Yes
Enclosed: Yes
Contiguous:
Yes
Permitted: Yes
Wet Space: No
Addition: No
Conversion: No

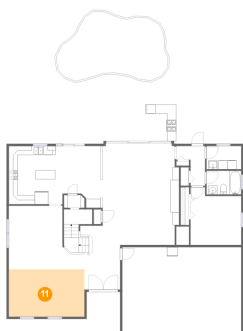
10 Floor 1 - Bath



Dimensions: 7'9" x 5'3"
Area: 41 sq. ft
Counted as Living Area:
Yes

Heated: Yes
Finished: Yes
Enclosed: Yes
Contiguous:
Yes
Permitted: Yes
Wet Space: Yes
Addition: No
Conversion: No

11 Floor 1 - Sitting Room

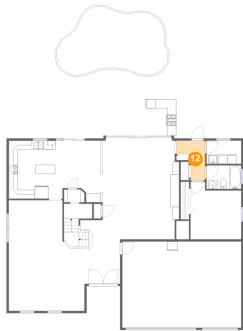


Dimensions: 16'11" x 10'7"
Area: 178 sq. ft
Counted as Living Area:
Yes

Heated: Yes
Finished: Yes
Enclosed: Yes
Contiguous:
Yes
Permitted: Yes
Wet Space: No
Addition: No
Conversion: No

17905 Machair Lane, Ballantrae, Land O'Lakes, Pasco County, Florida, United States, 34638

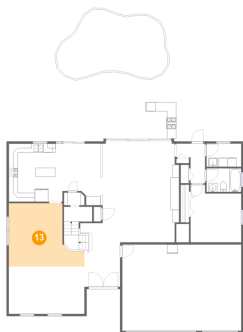
12 Floor 1 - Hall



Dimensions: 6'5" x 8'10"
Area: 38 sq. ft
Counted as Living Area:
Yes

Heated: Yes
Finished: Yes
Enclosed: Yes
Contiguous:
Yes
Permitted: Yes
Wet Space: No
Addition: No
Conversion: No

13 Floor 1 - Dining Area



Dimensions: 16'11" x 14'1"
Area: 187 sq. ft
Counted as Living Area:
Yes

Heated: Yes
Finished: Yes
Enclosed: Yes
Contiguous:
Yes
Permitted: Yes
Wet Space: No
Addition: No
Conversion: No

14 Floor 1 - Living Room

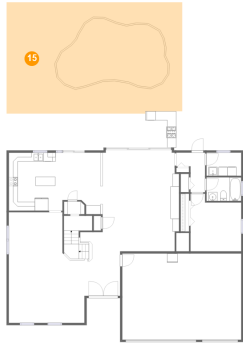


Dimensions: 17'1" x 22'7"
Area: 367 sq. ft
Counted as Living Area:
Yes

Heated: Yes
Finished: Yes
Enclosed: Yes
Contiguous:
Yes
Permitted: Yes
Wet Space: No
Addition: No
Conversion: No

17905 Machair Lane, Ballantrae, Land O'Lakes, Pasco County, Florida, United States, 34638

15 Floor 1 - Patio



Dimensions: 39'2" x 24'9"
Area: 970 sq. ft
Counted as Living Area: No

Heated: No
Finished: Yes
Enclosed: No
Contiguous: Yes
Permitted: Yes
Wet Space: No
Addition: No
Conversion: No

16 Floor 2 - Wc



Dimensions: 4'11" x 2'11"
Area: 13 sq. ft
Counted as Living Area:
Yes

Heated: Yes
Finished: Yes
Enclosed: Yes
Contiguous:
Yes
Permitted: Yes
Wet Space: Yes
Addition: No
Conversion: No

17 Floor 2 - W.i.c.

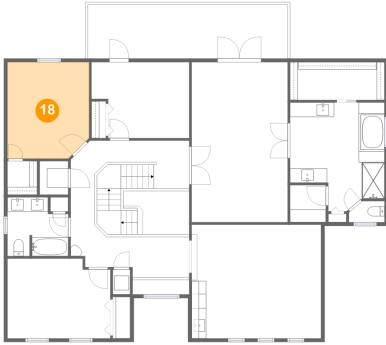


Dimensions: 4'1" x 4'8"
Area: 19 sq. ft
Counted as Living Area:
Yes

Heated: Yes
Finished: Yes
Enclosed: Yes
Contiguous:
Yes
Permitted: Yes
Wet Space: No
Addition: No
Conversion: No

**17905 Machair Lane, Ballantrae, Land O'Lakes,
Pasco County, Florida, United States, 34638**

18 Floor 2 - Bedroom



Dimensions: 11'2" x 13'3"
Area: 145 sq. ft
Counted as Living Area:
Yes

Heated: Yes
Finished: Yes
Enclosed: Yes
Contiguous:
Yes
Permitted: Yes
Wet Space: No
Addition: No
Conversion: No

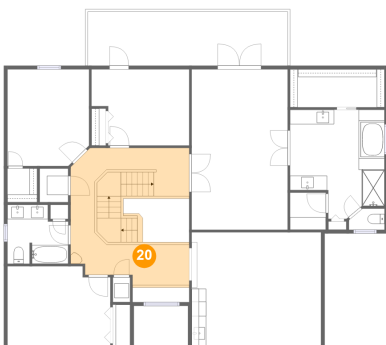
19 Floor 2 - Bedroom



Dimensions: 13'5" x 10'5"
Area: 128 sq. ft
Counted as Living Area:
Yes

Heated: Yes
Finished: Yes
Enclosed: Yes
Contiguous:
Yes
Permitted: Yes
Wet Space: No
Addition: No
Conversion: No

20 Floor 2 - Hall

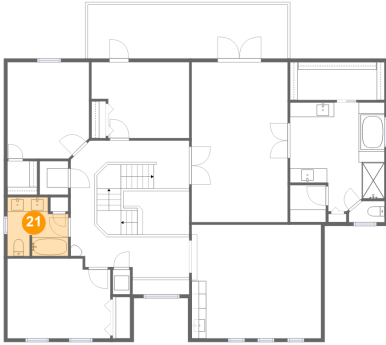


Dimensions: 16'4" x 18'10"
Area: 247 sq. ft
Counted as Living Area:
Yes

Heated: Yes
Finished: Yes
Enclosed: Yes
Contiguous:
Yes
Permitted: Yes
Wet Space: No
Addition: No
Conversion: No

**17905 Machair Lane, Ballantrae, Land O'Lakes,
Pasco County, Florida, United States, 34638**

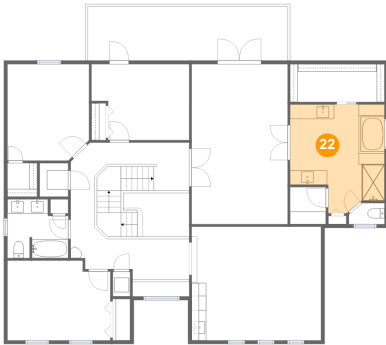
21 Floor 2 - Bath



Dimensions: 8'4" x 8'1"
Area: 60 sq. ft
Counted as Living Area:
Yes

Heated: Yes
Finished: Yes
Enclosed: Yes
Contiguous:
Yes
Permitted: Yes
Wet Space: Yes
Addition: No
Conversion: No

22 Floor 2 - Primary Bath



Dimensions: 13'0" x 15'0"
Area: 167 sq. ft
Counted as Living Area:
Yes

Heated: Yes
Finished: Yes
Enclosed: Yes
Contiguous:
Yes
Permitted: Yes
Wet Space: Yes
Addition: No
Conversion: No

23 Floor 2 - W.i.c.

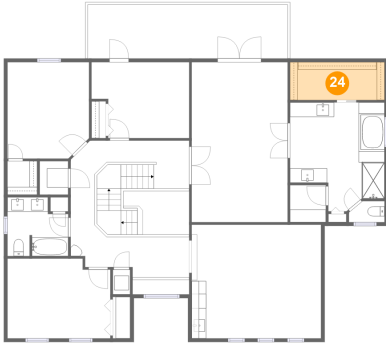


Dimensions: 4'11" x 5'1"
Area: 25 sq. ft
Counted as Living Area:
Yes

Heated: Yes
Finished: Yes
Enclosed: Yes
Contiguous:
Yes
Permitted: Yes
Wet Space: No
Addition: No
Conversion: No

17905 Machair Lane, Ballantrae, Land O'Lakes, Pasco County, Florida, United States, 34638

24 Floor 2 - W.i.c.



Dimensions: 13'0" x 5'2"
Area: 68 sq. ft
Counted as Living Area:
Yes

Heated: Yes
Finished: Yes
Enclosed: Yes
Contiguous:
Yes
Permitted: Yes
Wet Space: No
Addition: No
Conversion: No

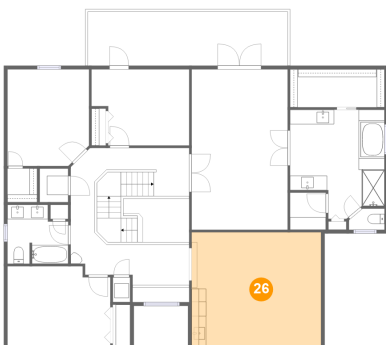
25 Floor 2 - Balcony



Dimensions: 27'6" x 7'5"
Area: 204 sq. ft
Counted as Living Area: No

Heated: No
Finished: Yes
Enclosed: No
Contiguous: Yes
Permitted: Yes
Wet Space: No
Addition: No
Conversion: No

26 Floor 2 - Family Room



Dimensions: 17'10" x 15'8"
Area: 278 sq. ft
Counted as Living Area:
Yes

Heated: Yes
Finished: Yes
Enclosed: Yes
Contiguous:
Yes
Permitted: Yes
Wet Space: No
Addition: No
Conversion: No

17905 Machair Lane, Ballantrae, Land O'Lakes, Pasco County, Florida, United States, 34638

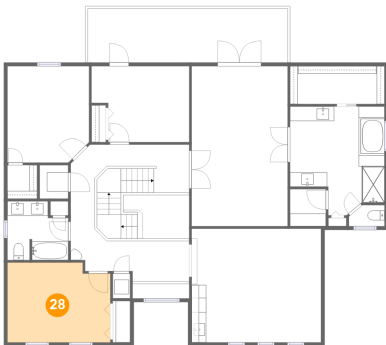
27 Floor 2 - Open To Below



Dimensions: 9'1" x 6'0"
Area: 44 sq. ft
Counted as Living Area: No

Heated: No
Finished: No
Enclosed: No
Contiguous: Yes
Permitted: No
Wet Space: No
Addition: No
Conversion: No

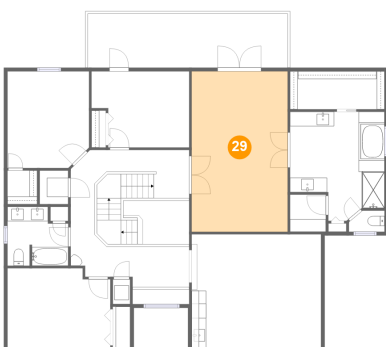
28 Floor 2 - Bedroom



Dimensions: 14'2" x 11'0"
Area: 149 sq. ft
Counted as Living Area:
Yes

Heated: Yes
Finished: Yes
Enclosed: Yes
Contiguous:
Yes
Permitted: Yes
Wet Space: No
Addition: No
Conversion: No

29 Floor 2 - Primary Bedroom



Dimensions: 13'3" x 22'0"
Area: 291 sq. ft
Counted as Living Area:
Yes

Heated: Yes
Finished: Yes
Enclosed: Yes
Contiguous:
Yes
Permitted: Yes
Wet Space: No
Addition: No
Conversion: No

**17905 Machair Lane, Ballantrae, Land O'Lakes,
Pasco County, Florida, United States, 34638**

30 Floor 2 - Open To Below



Dimensions: 7'9" x 2'0"
Area: 16 sq. ft
Counted as Living Area: No

Heated: No
Finished: No
Enclosed: No
Contiguous: Yes
Permitted: No
Wet Space: No
Addition: No
Conversion: No