

Home report

15747 Park View Drive, Newbury Township, Newbury, Geauga County, Ohio, United States, 44065



Total Area: 2553 sq. ft

Below Ground: 1039 sq. ft, Floor 2: 1514 sq. ft

Excluded: Utility 322 sq. ft, Walls: 165 sq. ft

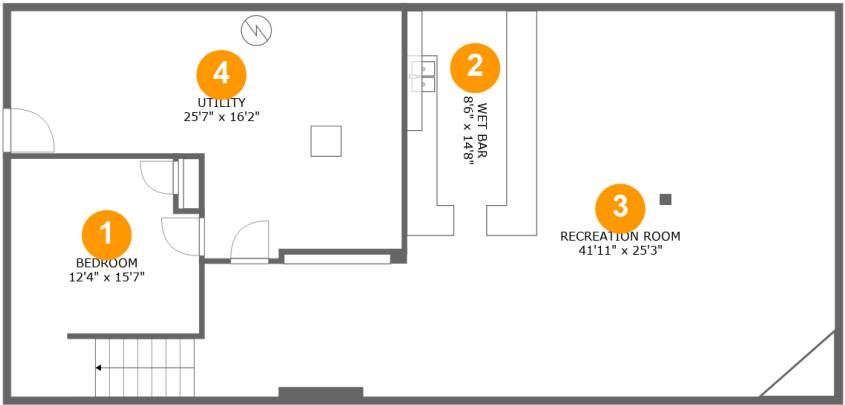
Property summary

 **2** Floors

 **5** Bedrooms

 **2** Bathrooms

15747 Park View Drive, Newbury Township, Newbury, Geauga
County, Ohio, United States, 44065



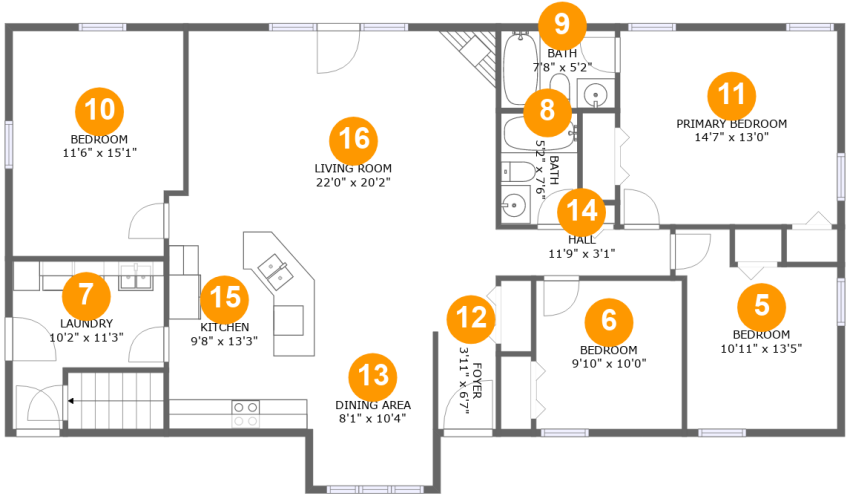
Room dimensions

Floor 1 Below ground Total:1039sqft Excluded: 322sqft

#		Max Dimensions	sqft	Included
1	Bedroom	12'4" x 15'7"	182 sq. ft	Yes
2	Wet Bar	8'6" x 14'8"	125 sq. ft	Yes
3	Recreation Room	41'11" x 25'3"	705 sq. ft	Yes
4	Utility	25'7" x 16'2"	322 sq. ft	No

Home report

15747 Park View Drive, Newbury Township, Newbury, Geauga County, Ohio, United States, 44065



Room dimensions

Floor 2 Total:1514sqft Excluded: 0sqft

#		Max Dimensions	sqft	Included
5	Bedroom	10'11" x 13'5"	120 sq. ft	Yes
6	Bedroom	9'10" x 10'0"	98 sq. ft	Yes
7	Laundry	10'2" x 11'3"	87 sq. ft	Yes
8	Bath	5'2" x 7'6"	38 sq. ft	Yes
9	Bath	7'8" x 5'2"	40 sq. ft	Yes
10	Bedroom	11'6" x 15'1"	168 sq. ft	Yes
11	Primary Bedroom	14'7" x 13'0"	190 sq. ft	Yes
12	Foyer	3'11" x 6'7"	25 sq. ft	Yes
13	Dining Area	8'1" x 10'4"	84 sq. ft	Yes
14	Hall	11'9" x 3'1"	36 sq. ft	Yes
15	Kitchen	9'8" x 13'3"	129 sq. ft	Yes

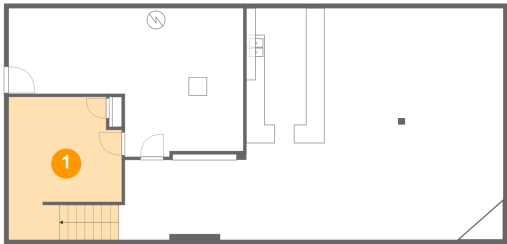
Home report

15747 Park View Drive, Newbury Township, Newbury, Geauga
County, Ohio, United States, 44065

#		Max Dimensions	sqft	Included
16	Living Room	22'0" x 20'2"	364 sq. ft	Yes

15747 Park View Drive, Newbury Township, Newbury, Geauga
County, Ohio, United States, 44065

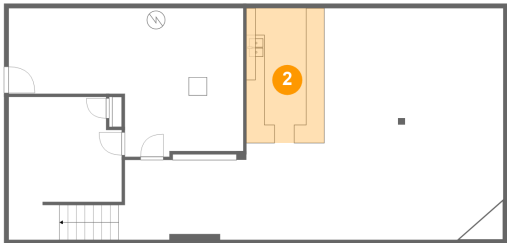
1 Floor 1 - Bedroom



Max Dimensions: 12'4" x 15'7"
Calculated Area: 182 sq. ft
Included: Yes

Heated: Yes
Finished: Yes
Enclosed: Yes
Contiguous: Yes
Permitted: Yes
Wet space: No
Addition: No
Conversion: No

2 Floor 1 - Wet Bar



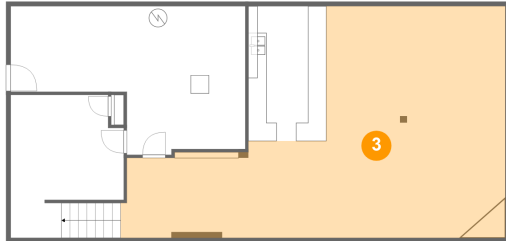
Max Dimensions: 8'6" x 14'8"
Calculated Area: 125 sq. ft
Included: Yes

Heated: Yes
Finished: Yes
Enclosed: Yes
Contiguous: Yes
Permitted: Yes
Wet space: No
Addition: No
Conversion: No

Home report

15747 Park View Drive, Newbury Township, Newbury, Geauga County, Ohio, United States, 44065

3 Floor 1 - Recreation Room



Max Dimensions: 41'11" x 25'3"
Calculated Area: 705 sq. ft
Included: Yes

Heated: Yes
Finished: Yes
Enclosed: Yes
Contiguous: Yes
Permitted: Yes
Wet space: No
Addition: No
Conversion: No

4 Floor 1 - Utility



Max Dimensions: 25'7" x 16'2"
Calculated Area: 322 sq. ft
Included: No

Heated: Yes
Finished: No
Enclosed: Yes
Contiguous: Yes
Permitted: Yes
Wet space: No
Addition: No
Conversion: No

5 Floor 2 - Bedroom

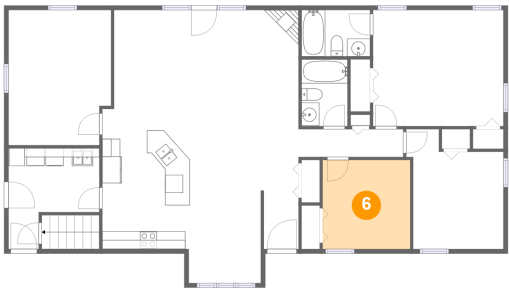


Max Dimensions: 10'11" x 13'5"
Calculated Area: 120 sq. ft
Included: Yes

Heated: Yes
Finished: Yes
Enclosed: Yes
Contiguous: Yes
Permitted: Yes
Wet space: No
Addition: No
Conversion: No

15747 Park View Drive, Newbury Township, Newbury, Geauga
County, Ohio, United States, 44065

6 Floor 2 - Bedroom



Max Dimensions: 9'10" x 10'0"
Calculated Area: 98 sq. ft
Included: Yes

Heated: Yes
Finished: Yes
Enclosed: Yes
Contiguous: Yes
Permitted: Yes
Wet space: No
Addition: No
Conversion: No

7 Floor 2 - Laundry



Max Dimensions: 10'2" x 11'3"
Calculated Area: 87 sq. ft
Included: Yes

Heated: Yes
Finished: Yes
Enclosed: Yes
Contiguous: Yes
Permitted: Yes
Wet space: No
Addition: No
Conversion: No

8 Floor 2 - Bath

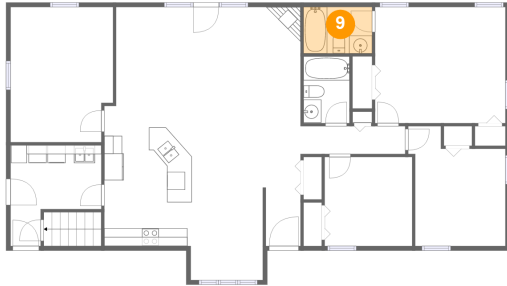


Max Dimensions: 5'2" x 7'6"
Calculated Area: 38 sq. ft
Included: Yes

Heated: Yes
Finished: Yes
Enclosed: Yes
Contiguous: Yes
Permitted: Yes
Wet space: Yes
Addition: No
Conversion: No

15747 Park View Drive, Newbury Township, Newbury, Geauga County, Ohio, United States, 44065

9 Floor 2 - Bath



Max Dimensions: 7'8" x 5'2"
Calculated Area: 40 sq. ft
Included: Yes

Heated: Yes
Finished: Yes
Enclosed: Yes
Contiguous: Yes
Permitted: Yes
Wet space: Yes
Addition: No
Conversion: No

10 Floor 2 - Bedroom



Max Dimensions: 11'6" x 15'1"
Calculated Area: 168 sq. ft
Included: Yes

Heated: Yes
Finished: Yes
Enclosed: Yes
Contiguous: Yes
Permitted: Yes
Wet space: No
Addition: No
Conversion: No

11 Floor 2 - Primary Bedroom

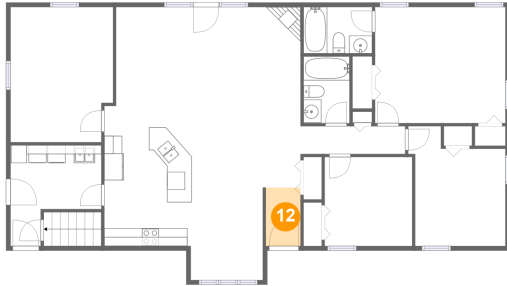


Max Dimensions: 14'7" x 13'0"
Calculated Area: 190 sq. ft
Included: Yes

Heated: Yes
Finished: Yes
Enclosed: Yes
Contiguous: Yes
Permitted: Yes
Wet space: No
Addition: No
Conversion: No

15747 Park View Drive, Newbury Township, Newbury, Geauga County, Ohio, United States, 44065

12 Floor 2 - Foyer



Max Dimensions: 3'11" x 6'7"
Calculated Area: 25 sq. ft
Included: Yes

Heated: Yes
Finished: Yes
Enclosed: Yes
Contiguous: Yes
Permitted: Yes
Wet space: No
Addition: No
Conversion: No

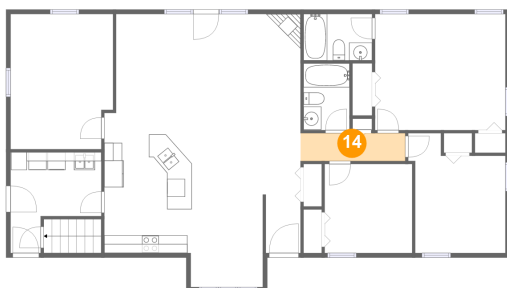
13 Floor 2 - Dining Area



Max Dimensions: 8'1" x 10'4"
Calculated Area: 84 sq. ft
Included: Yes

Heated: Yes
Finished: Yes
Enclosed: Yes
Contiguous: Yes
Permitted: Yes
Wet space: No
Addition: No
Conversion: No

14 Floor 2 - Hall

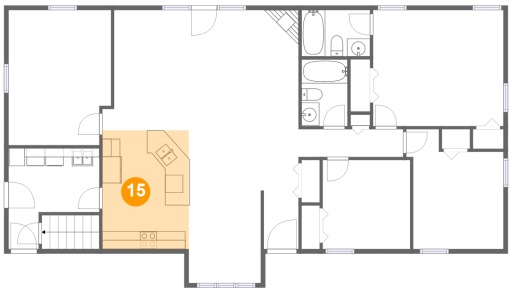


Max Dimensions: 11'9" x 3'1"
Calculated Area: 36 sq. ft
Included: Yes

Heated: Yes
Finished: Yes
Enclosed: Yes
Contiguous: Yes
Permitted: Yes
Wet space: No
Addition: No
Conversion: No

15747 Park View Drive, Newbury Township, Newbury, Geauga
County, Ohio, United States, 44065

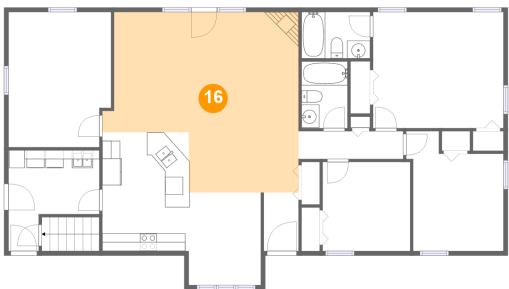
15 Floor 2 - Kitchen



Max Dimensions: 9'8" x 13'3"
Calculated Area: 129 sq. ft
Included: Yes

Heated: Yes
Finished: Yes
Enclosed: Yes
Contiguous: Yes
Permitted: Yes
Wet space: No
Addition: No
Conversion: No

16 Floor 2 - Living Room



Max Dimensions: 22'0" x 20'2"
Calculated Area: 364 sq. ft
Included: Yes

Heated: Yes
Finished: Yes
Enclosed: Yes
Contiguous: Yes
Permitted: Yes
Wet space: No
Addition: No
Conversion: No