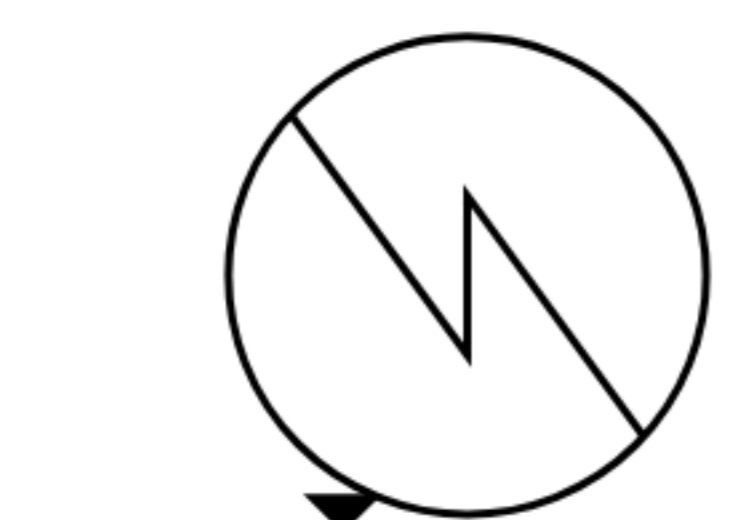


STORAGE  
9'6" x 13'11"

BASEMENT  
27'8" x 25'8"

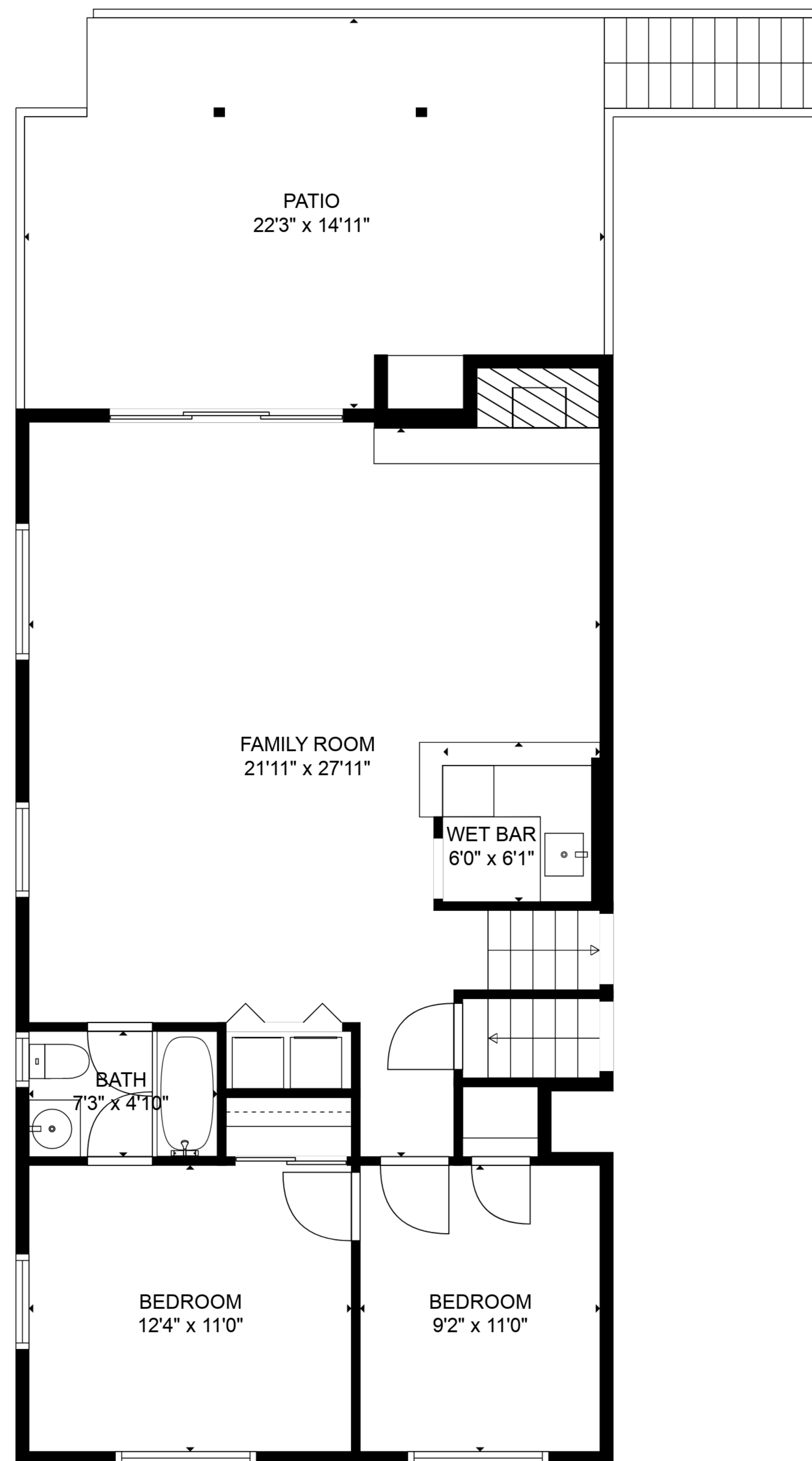
ELECTRICAL ROOM  
6'11" x 6'1"



**TOTAL: 3065 sq. ft**

BELOW GROUND: 553 sq. ft, FLOOR 2: 858 sq. ft, FLOOR 3: 783 sq. ft, FLOOR 4: 871 sq. ft  
EXCLUDED AREAS: ELECTRICAL ROOM: 42 sq. ft, STORAGE: 117 sq. ft, PATIO: 1081 sq. ft,  
FIREPLACE: 31 sq. ft, GARAGE: 533 sq. ft, BALCONY: 238 sq. ft

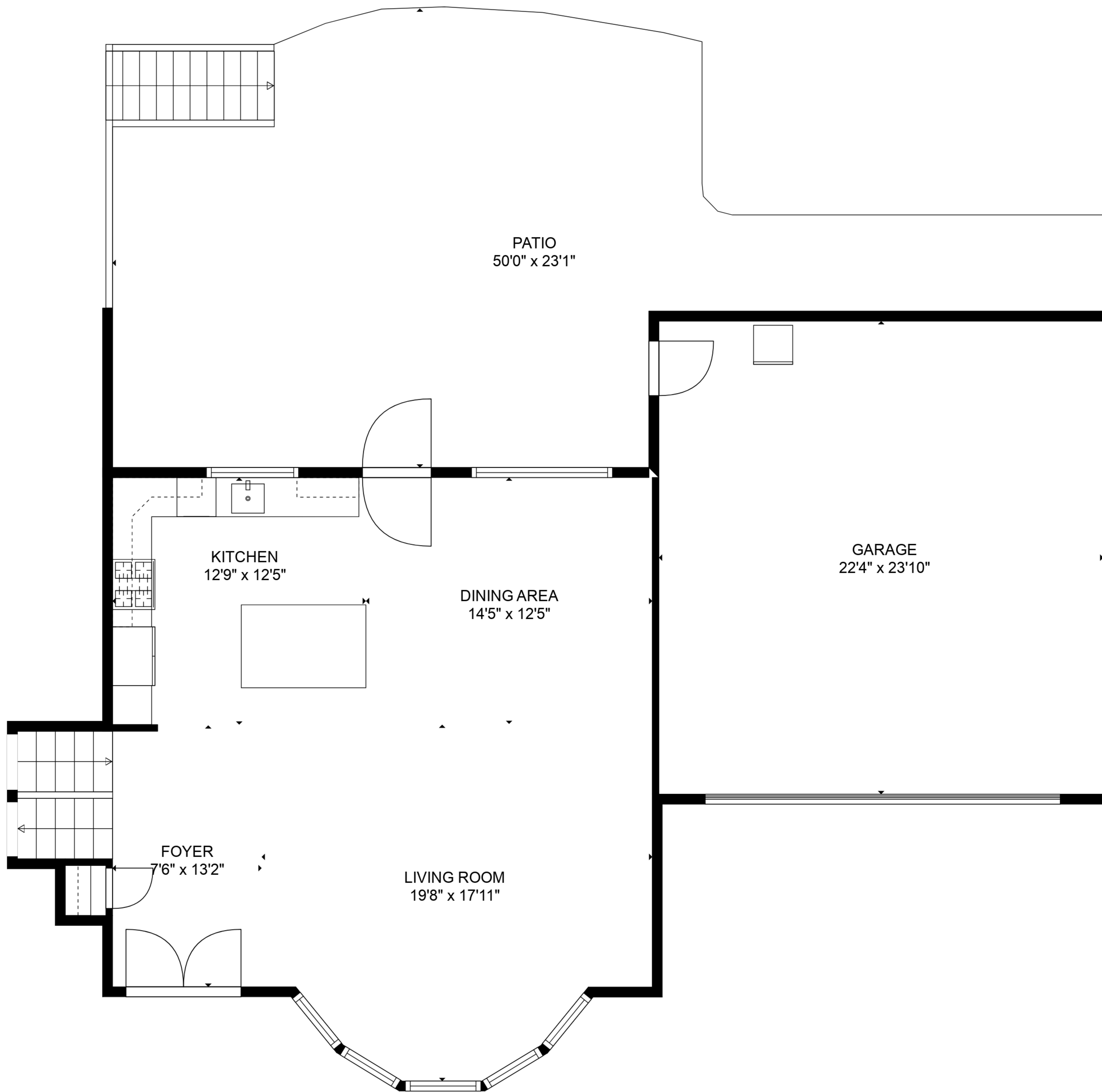
SIZES AND DIMENSIONS ARE APPROXIMATE, ACTUAL MAY VARY.



**TOTAL: 3065 sq. ft**

BELOW GROUND: 553 sq. ft, FLOOR 2: 858 sq. ft, FLOOR 3: 783 sq. ft, FLOOR 4: 871 sq. ft  
 EXCLUDED AREAS: ELECTRICAL ROOM: 42 sq. ft, STORAGE: 117 sq. ft, PATIO: 1081 sq. ft,  
 FIREPLACE: 31 sq. ft, GARAGE: 533 sq. ft, BALCONY: 238 sq. ft

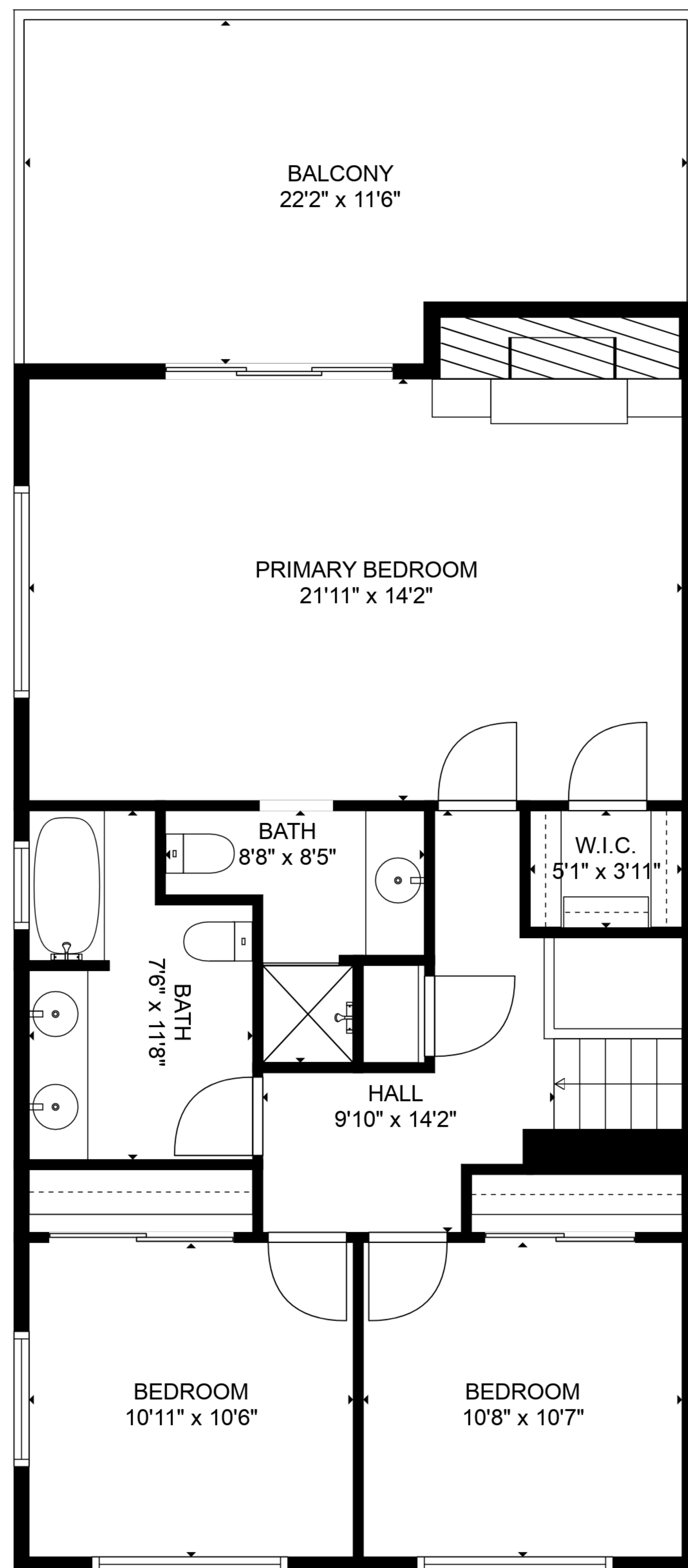
SIZES AND DIMENSIONS ARE APPROXIMATE, ACTUAL MAY VARY.



**TOTAL: 3065 sq. ft**

BELOW GROUND: 553 sq. ft, FLOOR 2: 858 sq. ft, FLOOR 3: 783 sq. ft, FLOOR 4: 871 sq. ft  
 EXCLUDED AREAS: ELECTRICAL ROOM: 42 sq. ft, STORAGE: 117 sq. ft, PATIO: 1081 sq. ft,  
 FIREPLACE: 31 sq. ft, GARAGE: 533 sq. ft, BALCONY: 238 sq. ft

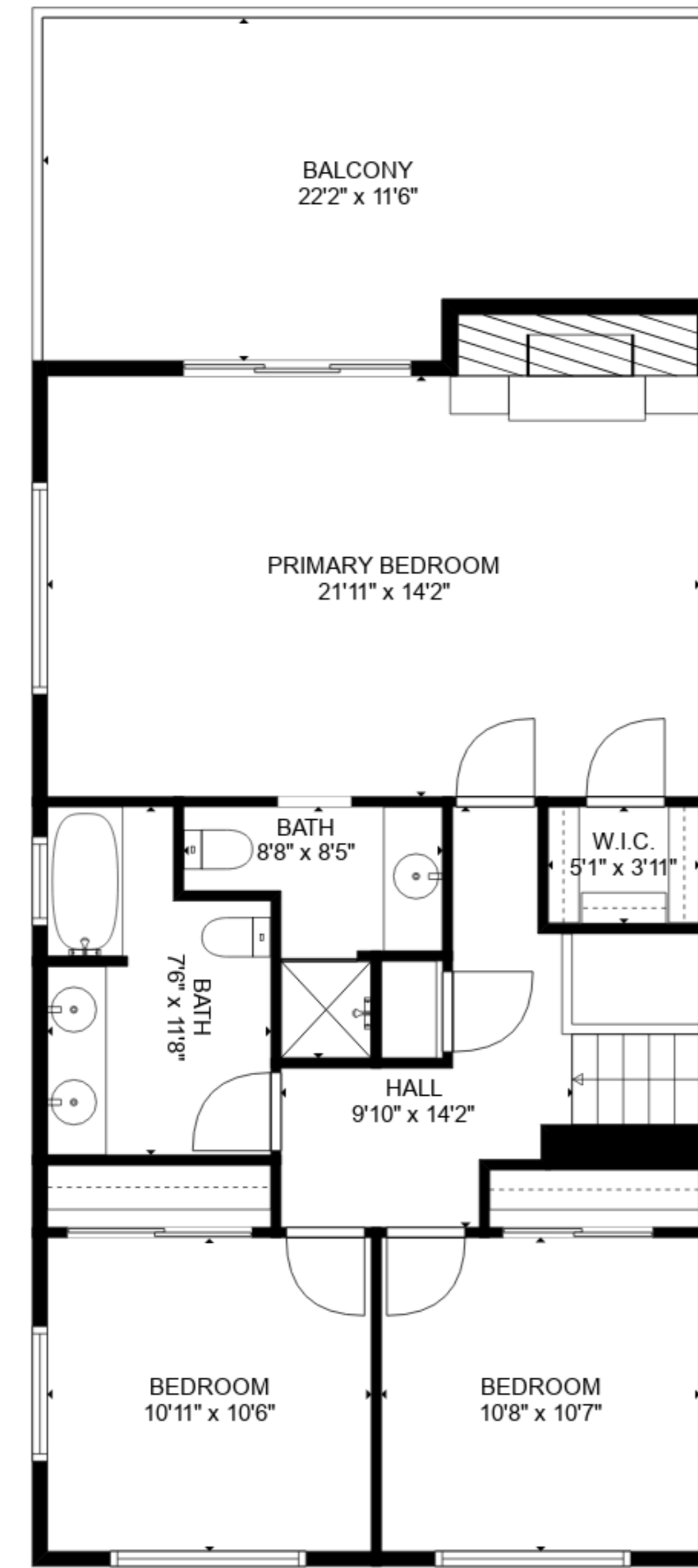
SIZES AND DIMENSIONS ARE APPROXIMATE, ACTUAL MAY VARY.



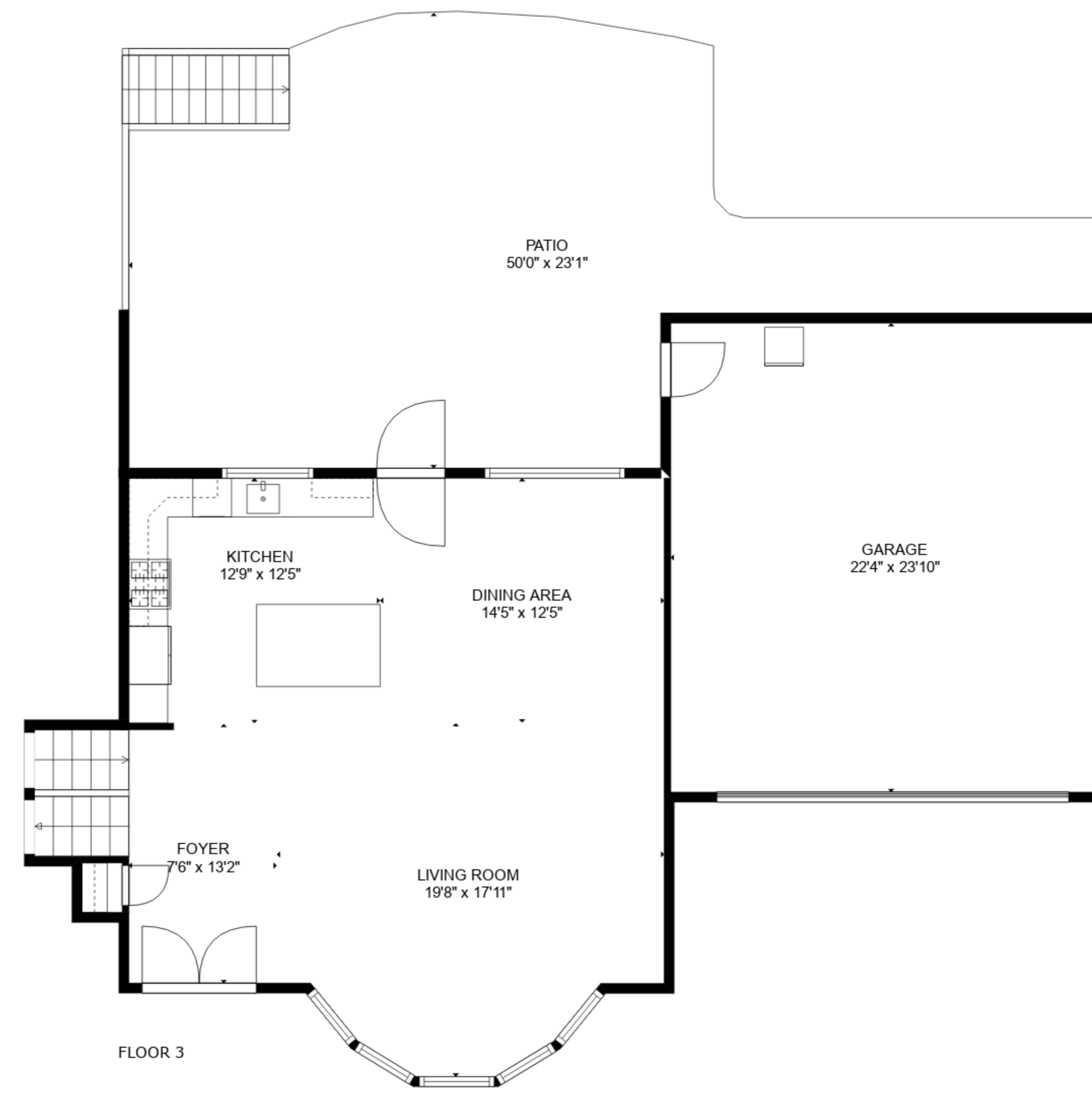
**TOTAL: 3065 sq. ft**

BELOW GROUND: 553 sq. ft, FLOOR 2: 858 sq. ft, FLOOR 3: 783 sq. ft, FLOOR 4: 871 sq. ft  
 EXCLUDED AREAS: ELECTRICAL ROOM: 42 sq. ft, STORAGE: 117 sq. ft, PATIO: 1081 sq. ft,  
 FIREPLACE: 31 sq. ft, GARAGE: 533 sq. ft, BALCONY: 238 sq. ft

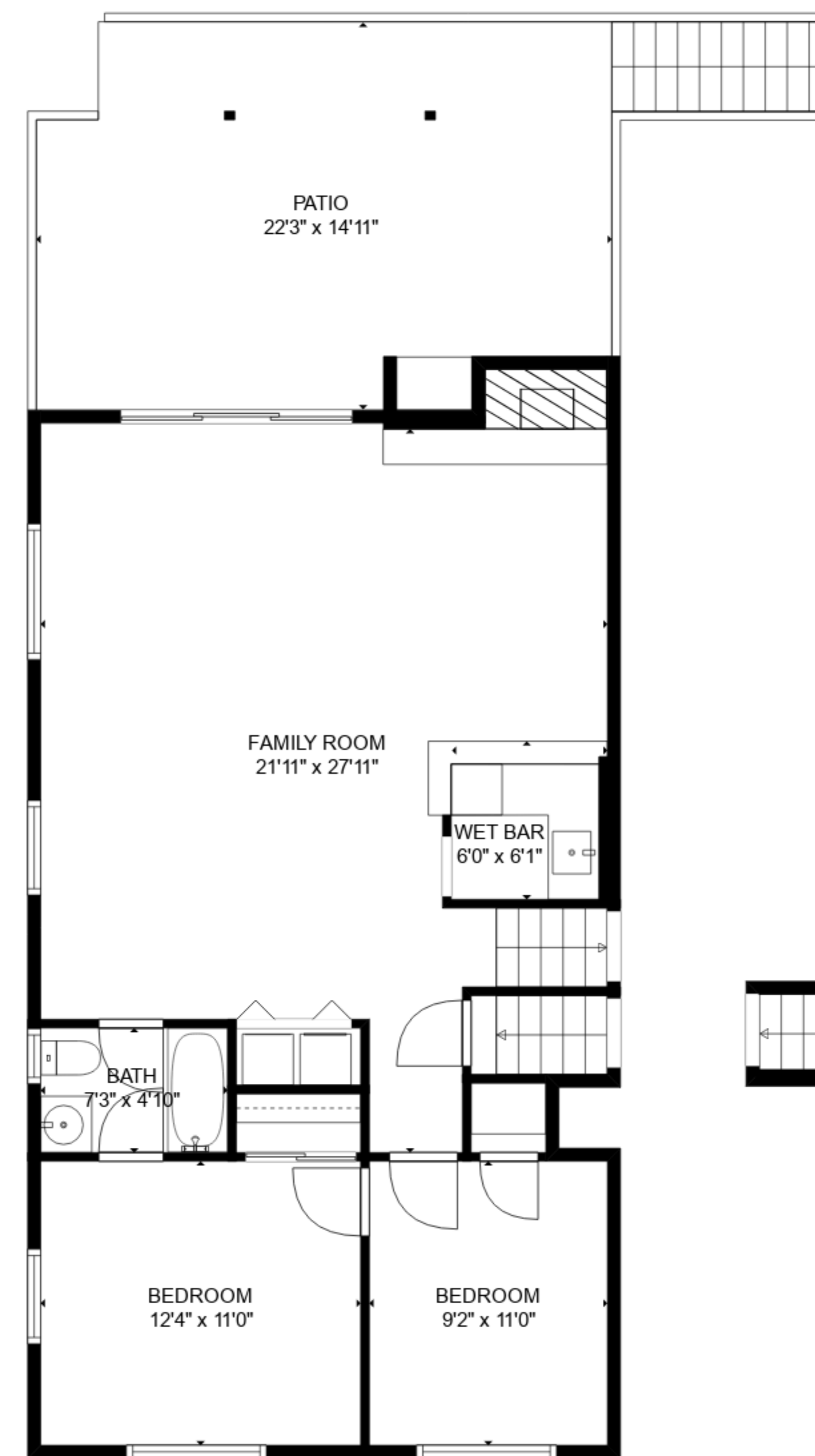
SIZES AND DIMENSIONS ARE APPROXIMATE, ACTUAL MAY VARY.



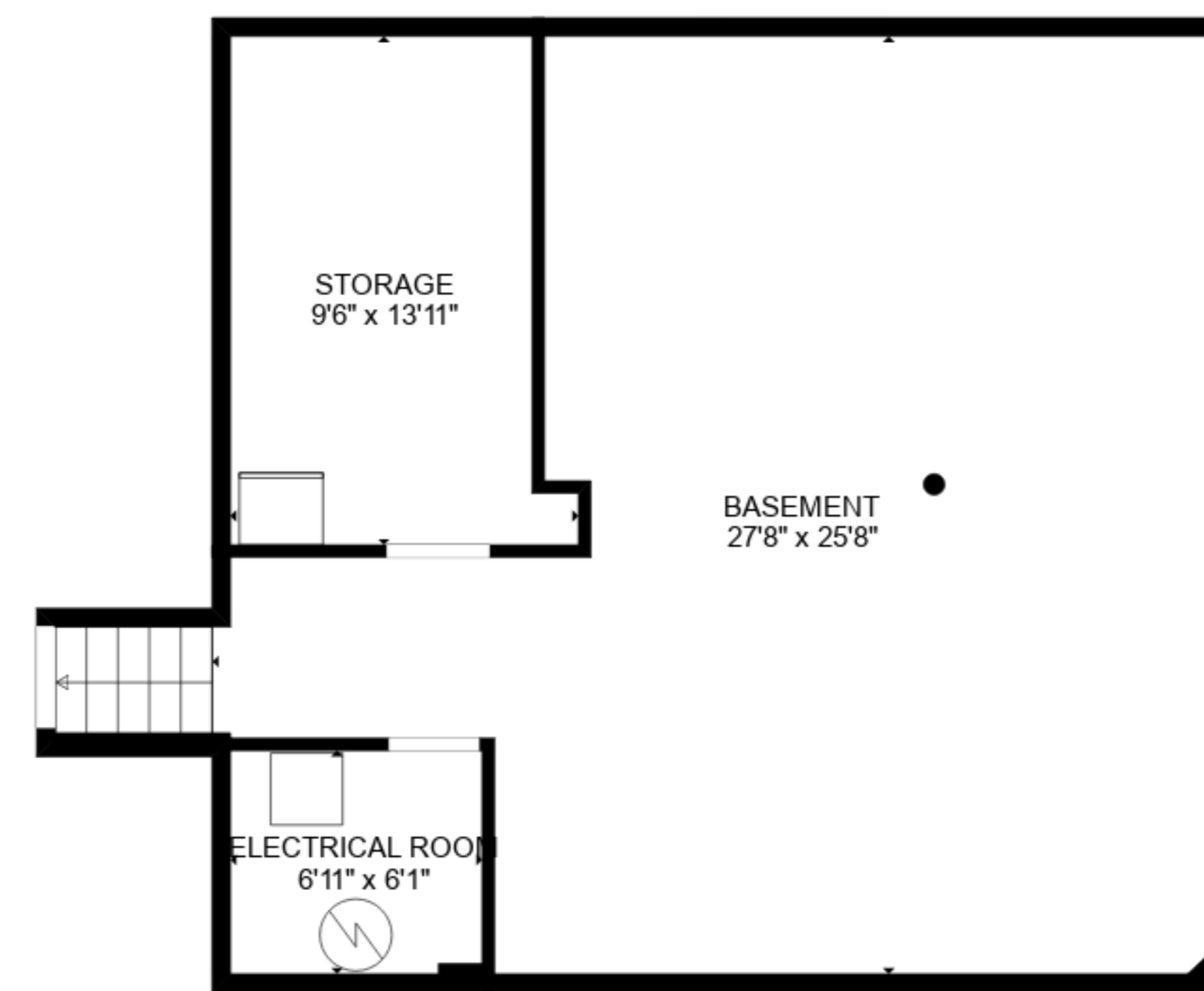
FLOOR 4



FLOOR 3



FLOOR 2



FLOOR 1

**TOTAL: 3065 sq. ft**

BELOW GROUND: 553 sq. ft, FLOOR 2: 858 sq. ft, FLOOR 3: 783 sq. ft, FLOOR 4: 871 sq. ft  
 EXCLUDED AREAS: ELECTRICAL ROOM: 42 sq. ft, STORAGE: 117 sq. ft, PATIO: 1081 sq. ft,  
 FIREPLACE: 31 sq. ft, GARAGE: 533 sq. ft, BALCONY: 238 sq. ft

SIZES AND DIMENSIONS ARE APPROXIMATE, ACTUAL MAY VARY.