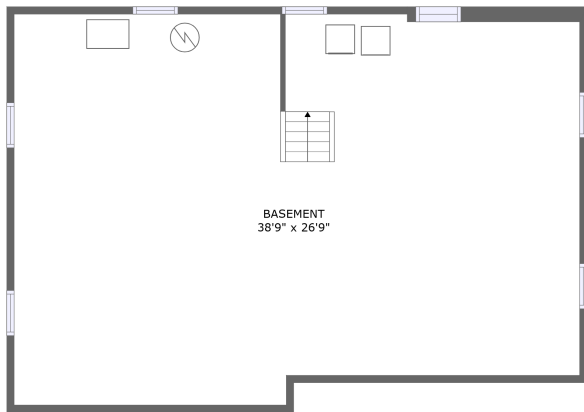
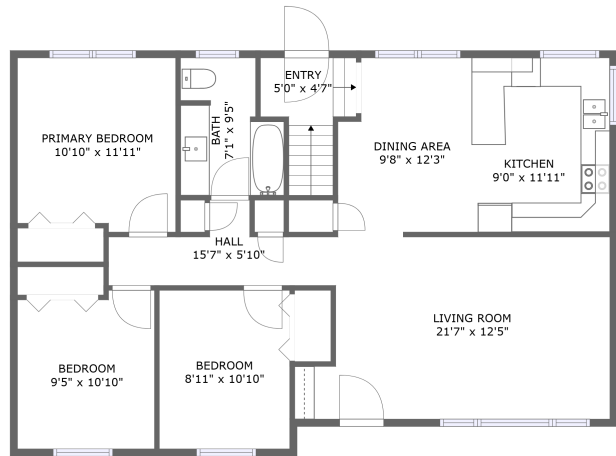


67075 Pineridge Rd 24e, Sunnyside, Manitoba, Canada, R5R 0G9







FLOOR 1



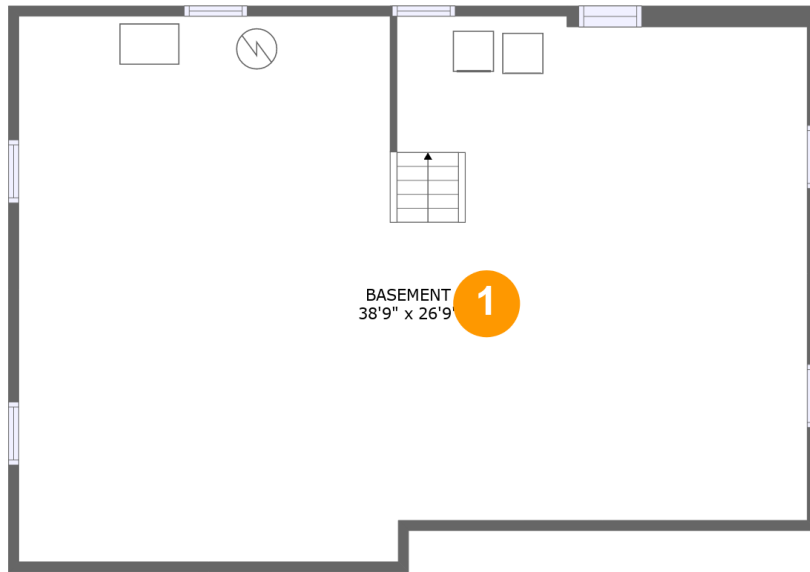
FLOOR 2

Property Summary

 **0** garages  **3** bedrooms  **1** bathrooms  **0** half baths

 **2** floors  **1,109** Gross Living Area sqft  **2,171** total sqft

67075 Pineridge Rd 24e, Sunnyside, Manitoba, Canada, R5R 0G9



Room Dimensions

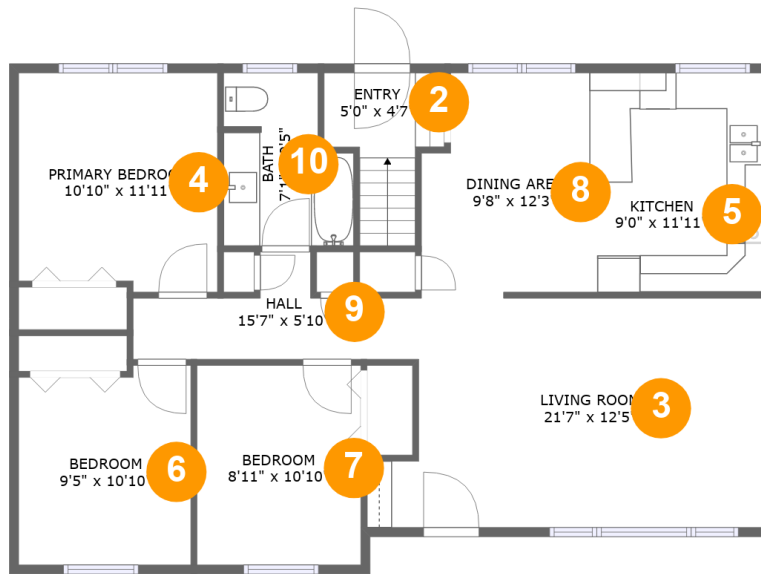
Floor 1

Total sqft: 1062

Living area: 0

#	Room name	Dimensions	Area (sqft)	Counted as Living Area
1	Basement	38'9" x 26'9"	987 sq. ft	No

67075 Pineridge Rd 24e, Sunnyside, Manitoba, Canada, R5R 0G9



Room Dimensions

Floor 2

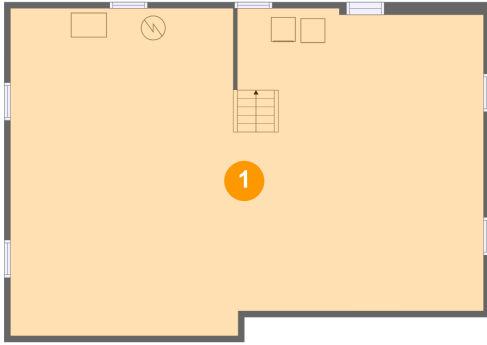
Total sqft: 1109

Living area: 1109

#	Room name	Dimensions	Area (sqft)	Counted as Living Area
2	Entry	5'0" x 4'7"	43 sq. ft	Yes
3	Living Room	21'7" x 12'5"	244 sq. ft	Yes
4	Primary Bedroom	10'10" x 11'11"	125 sq. ft	Yes
5	Kitchen	9'0" x 11'11"	107 sq. ft	Yes
6	Bedroom	9'5" x 10'10"	98 sq. ft	Yes
7	Bedroom	8'11" x 10'10"	97 sq. ft	Yes
8	Dining Area	9'8" x 12'3"	109 sq. ft	Yes
9	Hall	15'7" x 5'10"	59 sq. ft	Yes
10	Bath	7'1" x 9'5"	57 sq. ft	Yes

67075 Pineridge Rd 24e, Sunnyside, Manitoba, Canada, R5R 0G9

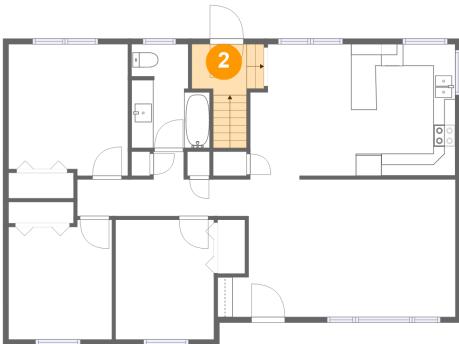
1 Floor 1 - Basement



Dimensions: 38'9" x 26'9"
Area: 987 sq. ft
Counted as Living Area: No

Heated: No
Finished: No
Enclosed: Yes
Contiguous: Yes
Permitted: Yes
Wet Space: No
Addition: No
Conversion: No

2 Floor 2 - Entry

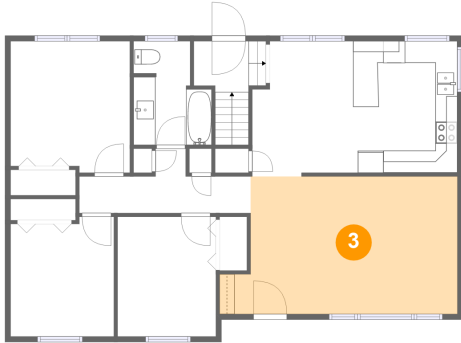


Dimensions: 5'0" x 4'7"
Area: 43 sq. ft
Counted as Living Area:
Yes

Heated: Yes
Finished: Yes
Enclosed: Yes
Contiguous:
Yes
Permitted: Yes
Wet Space: No
Addition: No
Conversion: No

67075 Pineridge Rd 24e, Sunnyside, Manitoba, Canada, R5R 0G9

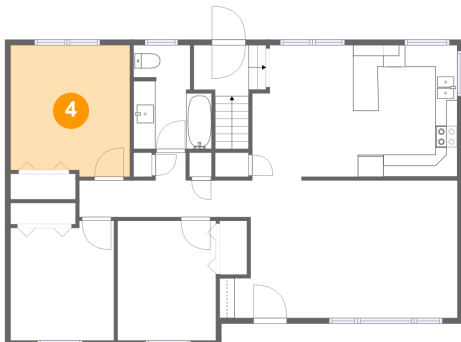
3 Floor 2 - Living Room



Dimensions: 21'7" x 12'5"
Area: 244 sq. ft
Counted as Living Area:
Yes

Heated: Yes
Finished: Yes
Enclosed: Yes
Contiguous:
Yes
Permitted: Yes
Wet Space: No
Addition: No
Conversion: No

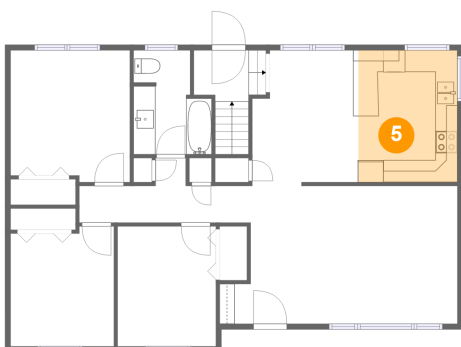
4 Floor 2 - Primary Bedroom



Dimensions: 10'10" x 11'11"
Area: 125 sq. ft
Counted as Living Area:
Yes

Heated: Yes
Finished: Yes
Enclosed: Yes
Contiguous:
Yes
Permitted: Yes
Wet Space: No
Addition: No
Conversion: No

5 Floor 2 - Kitchen

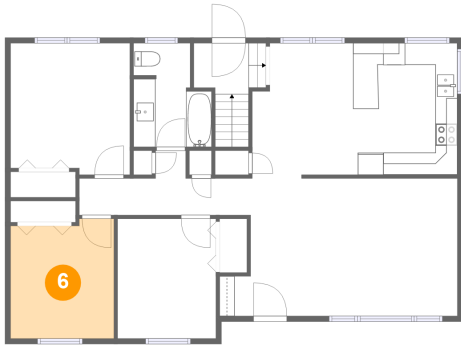


Dimensions: 9'0" x 11'11"
Area: 107 sq. ft
Counted as Living Area:
Yes

Heated: Yes
Finished: Yes
Enclosed: Yes
Contiguous:
Yes
Permitted: Yes
Wet Space: No
Addition: No
Conversion: No

67075 Pineridge Rd 24e, Sunnyside, Manitoba, Canada, R5R 0G9

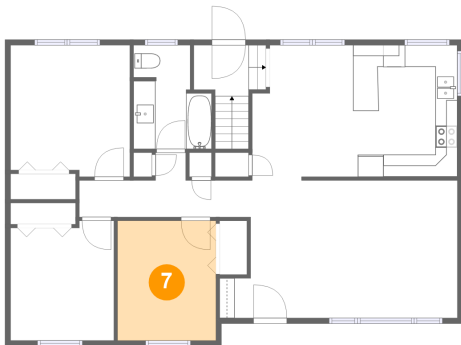
6 Floor 2 - Bedroom



Dimensions: 9'5" x 10'10"
Area: 98 sq. ft
Counted as Living Area:
Yes

Heated: Yes
Finished: Yes
Enclosed: Yes
Contiguous:
Yes
Permitted: Yes
Wet Space: No
Addition: No
Conversion: No

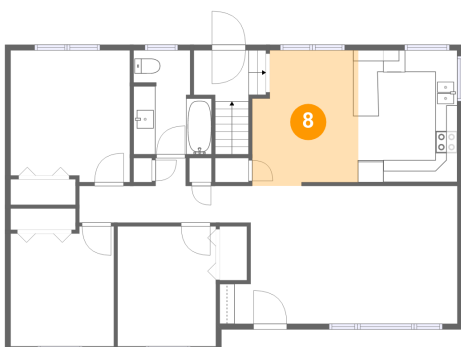
7 Floor 2 - Bedroom



Dimensions: 8'11" x 10'10"
Area: 97 sq. ft
Counted as Living Area:
Yes

Heated: Yes
Finished: Yes
Enclosed: Yes
Contiguous:
Yes
Permitted: Yes
Wet Space: No
Addition: No
Conversion: No

8 Floor 2 - Dining Area

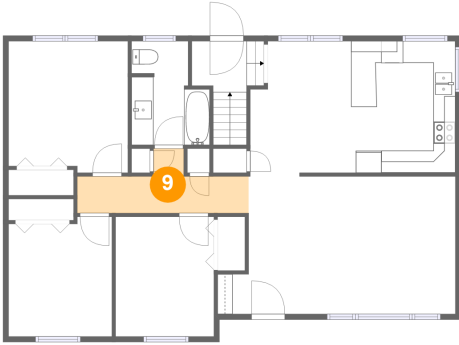


Dimensions: 9'8" x 12'3"
Area: 109 sq. ft
Counted as Living Area:
Yes

Heated: Yes
Finished: Yes
Enclosed: Yes
Contiguous:
Yes
Permitted: Yes
Wet Space: No
Addition: No
Conversion: No

67075 Pineridge Rd 24e, Sunnyside, Manitoba, Canada, R5R 0G9

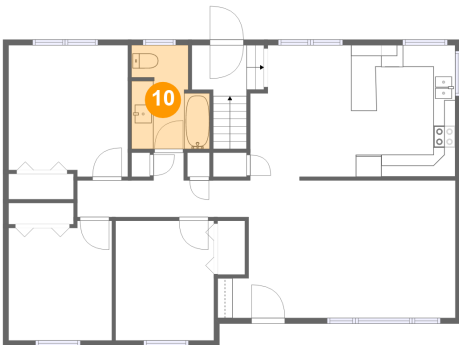
9 Floor 2 - Hall



Dimensions: 15'7" x 5'10"
Area: 59 sq. ft
Counted as Living Area:
Yes

Heated: Yes
Finished: Yes
Enclosed: Yes
Contiguous:
Yes
Permitted: Yes
Wet Space: No
Addition: No
Conversion: No

10 Floor 2 - Bath



Dimensions: 7'1" x 9'5"
Area: 57 sq. ft
Counted as Living Area:
Yes

Heated: Yes
Finished: Yes
Enclosed: Yes
Contiguous:
Yes
Permitted: Yes
Wet Space: Yes
Addition: No
Conversion: No