



45 LAMBTON AVE



Lainey Bonsell & Teresita Link

LTHOME.ca

Bringing your dreams home.

ROYAL LEPAGE
Estate Realty
MEMBER
BROKERAGE INDEPENDENTLY OWNED AND OPERATED



For more information on
45 LAMBTON AVE



Beautiful detached, three bedroom home with parking.

Renovated throughout, move-in and enjoy the spacious, open concept main floor with walk-out to a peaceful, fenced backyard and access to laneway parking. The bright and airy second floor offers three bedrooms and a full bathroom. The finished basement features a rec room with cozy gas fireplace, a laundry room and another full bathroom.

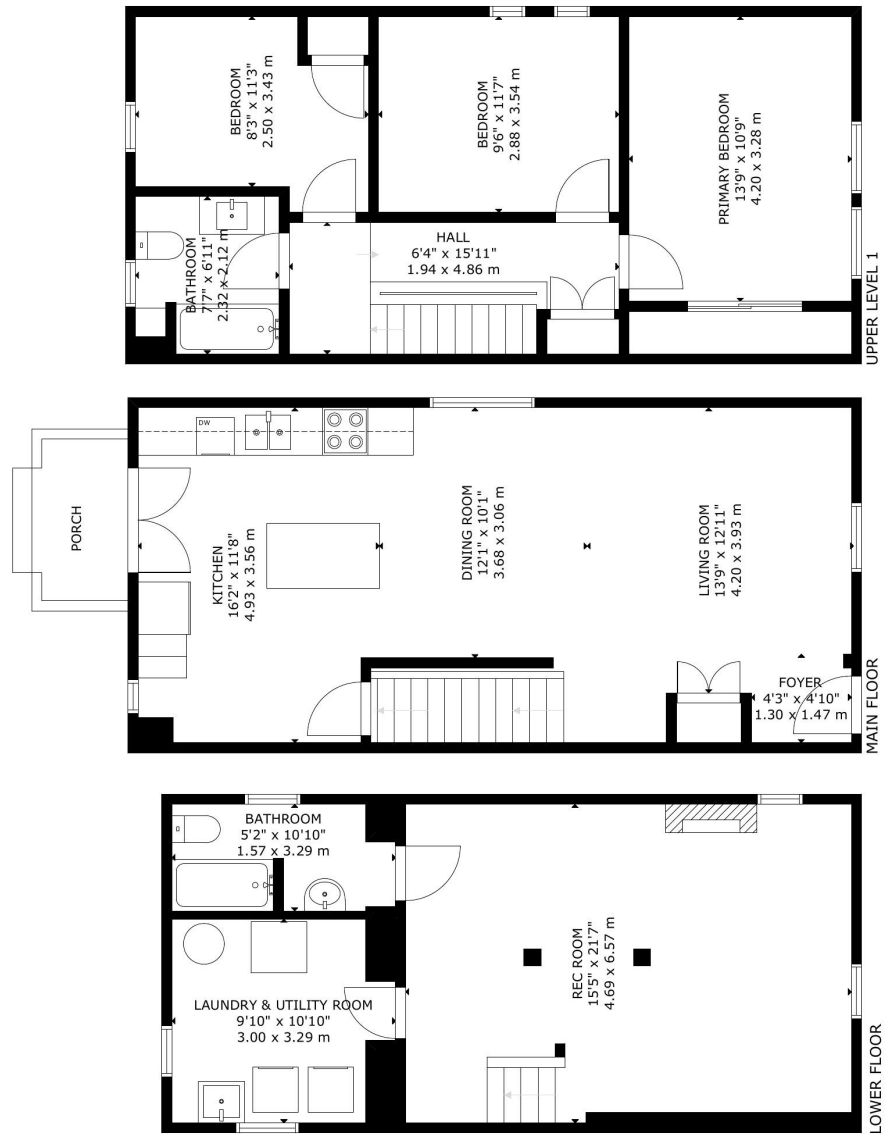
Perfect location, enjoy nearby Humber River trails and bike paths. Sandwiched between the Junction and Mount Denis, with the convenience of the UP Express /GO Transit services and minutes to the 'coming soon' Eglinton Crosstown LRT.



Visit

www.LTHome.ca





GROSS INTERNAL AREA
 MAIN FLOOR: 52 m²/558 sq.ft., UPPER LEVEL 1: 52 m²/565 sq.ft.
 LOWER FLOOR: 47 m²/506 sq.ft.
 TOTAL: 151 m²/1,629 sq.ft.
 SIZE AND DIMENSIONS ARE APPROXIMATE, ACTUAL MAY VARY

Not intended to solicit buyers or sellers currently under contract with another Brokerage



Lainey Bonsell & Teresita Link

LTHOME.ca

Bringing your dreams home.

Presented by:

Lainey Bonsell, Broker

Royal LePage Estate Realty, Brokerage

Lainey@LTHome.ca

416-526-9970