

2315 Salem Turnpike Northwest, Loudon, Roanoke, Roanoke city, Virginia, United States, 24017



Property summary

 **0** Garages

 **3** Bedrooms

 **1** Bathrooms

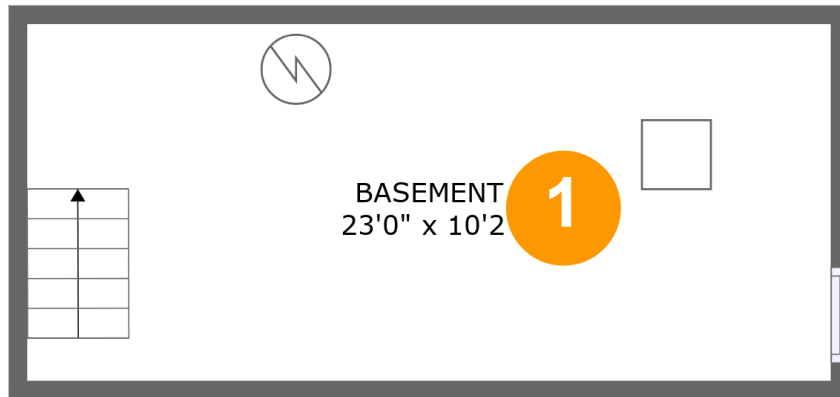
 **0** Half baths

 **3** Floors

 **1,360** Gross living area sqft

 **1,781** Total sqft

**2315 Salem Turnpike Northwest, Loudon, Roanoke,
Roanoke city, Virginia, United States, 24017**



Room dimensions

Floor 1

Total sqft: 268

Living area: 0

#		Dimensions	sqft	Counted as living area
1	Basement	23'0" x 10'2"	234 sq. ft	No

2315 Salem Turnpike Northwest, Loudon, Roanoke, Roanoke city, Virginia, United States, 24017



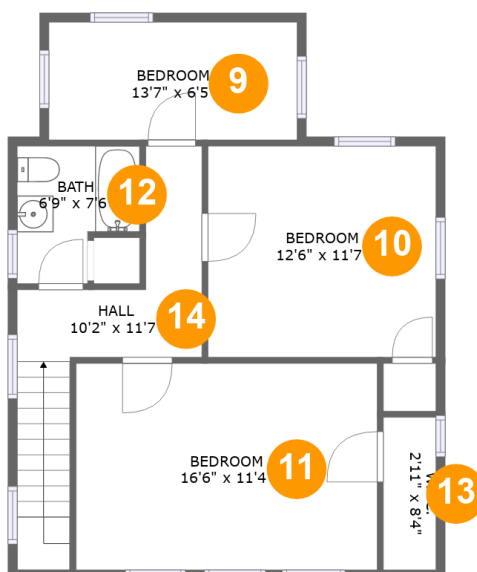
Room dimensions

Floor 2

Total sqft: 833 Living area: 680

#		Dimensions	sqft	Counted as living area
2	Kitchen	11'3" x 11'6"	127 sq. ft	Yes
3	Deck	5'11" x 3'3"	20 sq. ft	No
4	Dining Room	11'5" x 11'6"	129 sq. ft	Yes
5	Pantry	5'9" x 6'5"	37 sq. ft	Yes
6	Laundry	7'6" x 6'5"	48 sq. ft	Yes
7	Porch	16'7" x 7'0"	133 sq. ft	No
8	Living Room	20'1" x 11'5"	264 sq. ft	Yes

2315 Salem Turnpike Northwest, Loudon, Roanoke, Roanoke city, Virginia, United States, 24017



Room dimensions

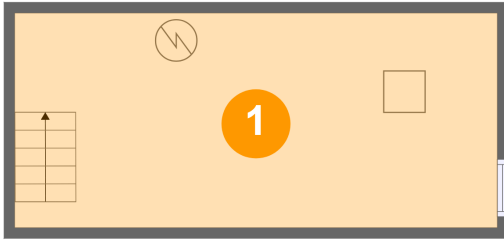
Floor 3

Total sqft: 680 Living area: 680

#		Dimensions	sqft	Counted as living area
9	Bedroom	13'7" x 6'5"	88 sq. ft	Yes
10	Bedroom	12'6" x 11'7"	145 sq. ft	Yes
11	Bedroom	16'6" x 11'4"	187 sq. ft	Yes
12	Bath	6'9" x 7'6"	43 sq. ft	Yes
13	W.I.C.	2'11" x 8'4"	24 sq. ft	Yes
14	Hall	10'2" x 11'7"	96 sq. ft	Yes

2315 Salem Turnpike Northwest, Loudon, Roanoke, Roanoke city, Virginia, United States, 24017

1 Floor 1 - Basement



Dimensions: 23'0" x 10'2"
Area: 234 sq. ft
Counted as living area: No

Heated: Yes
Finished: No
Enclosed: Yes
Contiguous: Yes
Permitted: Yes
Wet space: No
Addition: No
Conversion: No

2 Floor 2 - Kitchen



Dimensions: 11'3" x 11'6"
Area: 127 sq. ft
Counted as living area: Yes

Heated: Yes
Finished: Yes
Enclosed: Yes
Contiguous: Yes
Permitted: Yes
Wet space: No
Addition: No
Conversion: No

2315 Salem Turnpike Northwest, Loudon, Roanoke,
Roanoke city, Virginia, United States, 24017

3 Floor 2 - Deck



Dimensions: 5'11" x 3'3"
Area: 20 sq. ft
Counted as living area: No

Heated: No
Finished: Yes
Enclosed: No
Contiguous: Yes
Permitted: Yes
Wet space: No
Addition: No
Conversion: No

4 Floor 2 - Dining Room



Dimensions: 11'5" x 11'6"
Area: 129 sq. ft
Counted as living area: Yes

Heated: Yes
Finished: Yes
Enclosed: Yes
Contiguous: Yes
Permitted: Yes
Wet space: No
Addition: No
Conversion: No

5 Floor 2 - Pantry

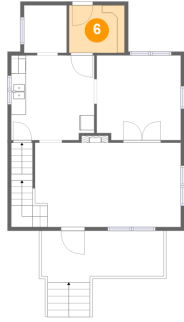


Dimensions: 5'9" x 6'5"
Area: 37 sq. ft
Counted as living area: Yes

Heated: Yes
Finished: Yes
Enclosed: Yes
Contiguous: Yes
Permitted: Yes
Wet space: No
Addition: No
Conversion: No

2315 Salem Turnpike Northwest, Loudon, Roanoke, Roanoke city, Virginia, United States, 24017

6 Floor 2 - Laundry



Dimensions: 7'6" x 6'5"
Area: 48 sq. ft
Counted as living area: Yes

Heated: Yes
Finished: Yes
Enclosed: Yes
Contiguous: Yes
Permitted: Yes
Wet space: No
Addition: No
Conversion: No

7 Floor 2 - Porch



Dimensions: 16'7" x 7'0"
Area: 133 sq. ft
Counted as living area: No

Heated: No
Finished: Yes
Enclosed: No
Contiguous: Yes
Permitted: Yes
Wet space: No
Addition: No
Conversion: No

8 Floor 2 - Living Room

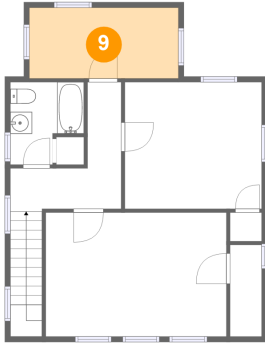


Dimensions: 20'1" x 11'5"
Area: 264 sq. ft
Counted as living area: Yes

Heated: Yes
Finished: Yes
Enclosed: Yes
Contiguous: Yes
Permitted: Yes
Wet space: No
Addition: No
Conversion: No

**2315 Salem Turnpike Northwest, Loudon, Roanoke,
Roanoke city, Virginia, United States, 24017**

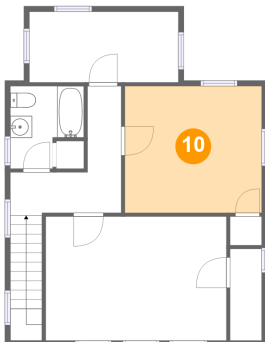
9 Floor 3 - Bedroom



Dimensions: 13'7" x 6'5"
Area: 88 sq. ft
Counted as living area: Yes

Heated: Yes
Finished: Yes
Enclosed: Yes
Contiguous: Yes
Permitted: Yes
Wet space: No
Addition: No
Conversion: No

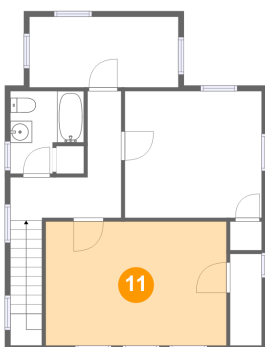
10 Floor 3 - Bedroom



Dimensions: 12'6" x 11'7"
Area: 145 sq. ft
Counted as living area: Yes

Heated: Yes
Finished: Yes
Enclosed: Yes
Contiguous: Yes
Permitted: Yes
Wet space: No
Addition: No
Conversion: No

11 Floor 3 - Bedroom

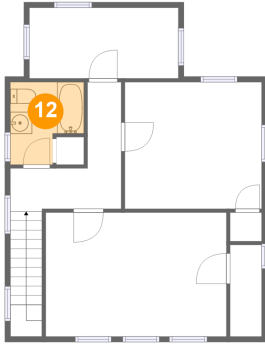


Dimensions: 16'6" x 11'4"
Area: 187 sq. ft
Counted as living area: Yes

Heated: Yes
Finished: Yes
Enclosed: Yes
Contiguous: Yes
Permitted: Yes
Wet space: No
Addition: No
Conversion: No

2315 Salem Turnpike Northwest, Loudon, Roanoke,
Roanoke city, Virginia, United States, 24017

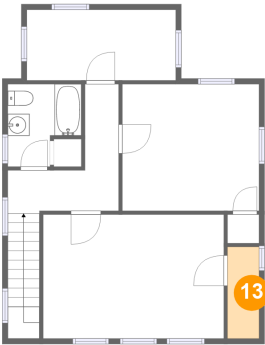
12 Floor 3 - Bath



Dimensions: 6'9" x 7'6"
Area: 43 sq. ft
Counted as living area: Yes

Heated: Yes
Finished: Yes
Enclosed: Yes
Contiguous: Yes
Permitted: Yes
Wet space: Yes
Addition: No
Conversion: No

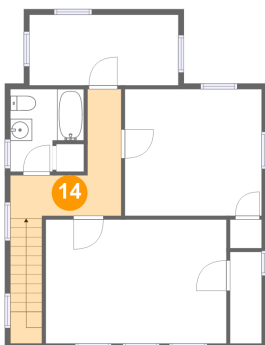
13 Floor 3 - W.I.C.



Dimensions: 2'11" x 8'4"
Area: 24 sq. ft
Counted as living area: Yes

Heated: Yes
Finished: Yes
Enclosed: Yes
Contiguous: Yes
Permitted: Yes
Wet space: No
Addition: No
Conversion: No

14 Floor 3 - Hall



Dimensions: 10'2" x 11'7"
Area: 96 sq. ft
Counted as living area: Yes

Heated: Yes
Finished: Yes
Enclosed: Yes
Contiguous: Yes
Permitted: Yes
Wet space: No
Addition: No
Conversion: No