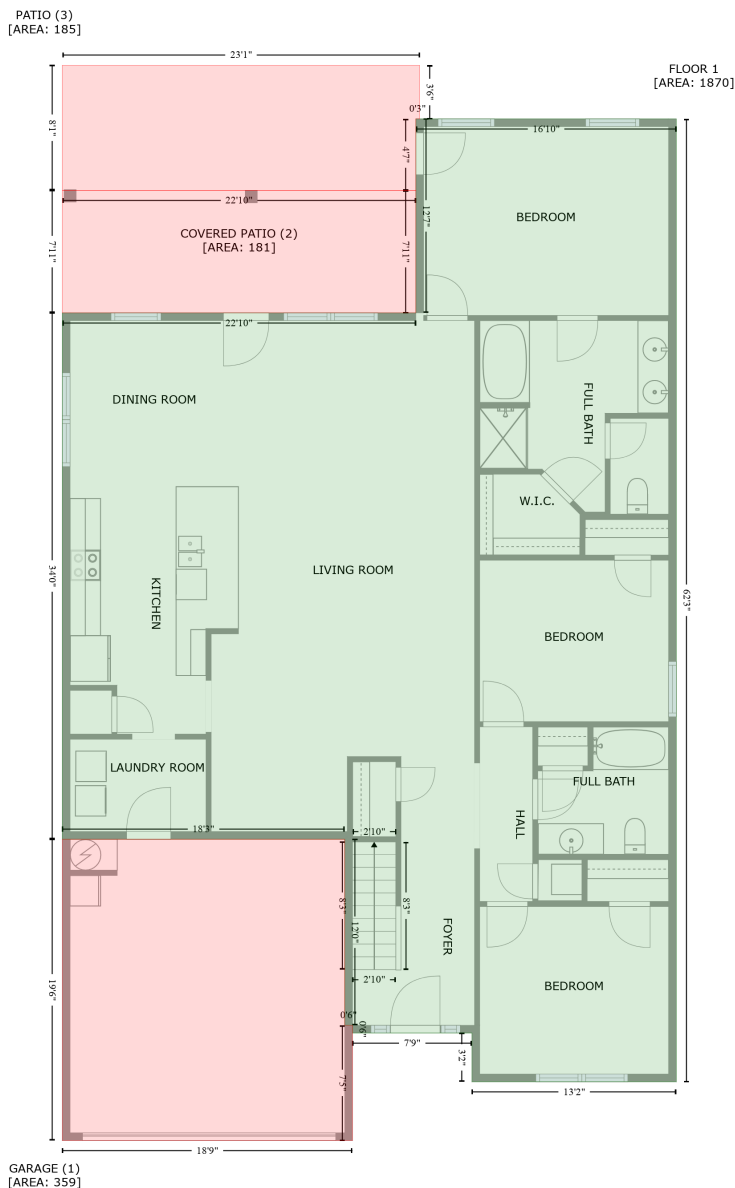


284 Abercorn Drive, Triana, Madison, Madison County, Alabama, United States, 35756

Gross Living Area: 2376 sq. ft



Space	Area (sq. ft)	Calculation
FLOOR 1 (Living area)	1870	Coordinate Polygon Area Algorithm using inches $-((587.3 + 587.3) * (122 - 868.9) + (587.3 + 428.9) * (868.9 - 868.9) + (428.9 + 428.9) * (868.9 - 831) + (428.9 + 336.3) * (831 - 831) + (336.3 + 336.3) * (831 - 825) + (336.3 + 330.3) * (825 - 825) + (330.3 + 330.3) * (825 - 680.7) + (330.3 + 111.4) * (680.7 - 680.7) + (111.4 + 111.4) * (680.7 - 272.5) + (111.4 + 385.4) * (272.5 - 272.5) + (385.4 + 385.4) * (272.5 - 122) + (385.4 + 587.3) * (122 - 122)) * 0.5 * 0.00694$
GARAGE	359	$-((330.3 + 330.3) * (680.7 - 825) + (330.3 + 336.3) * (825 - 825) + (336.3 + 336.3) * (825 - 914.4))$

284 Abercorn Drive, Triana, Madison, Madison County, Alabama, United States, 35756

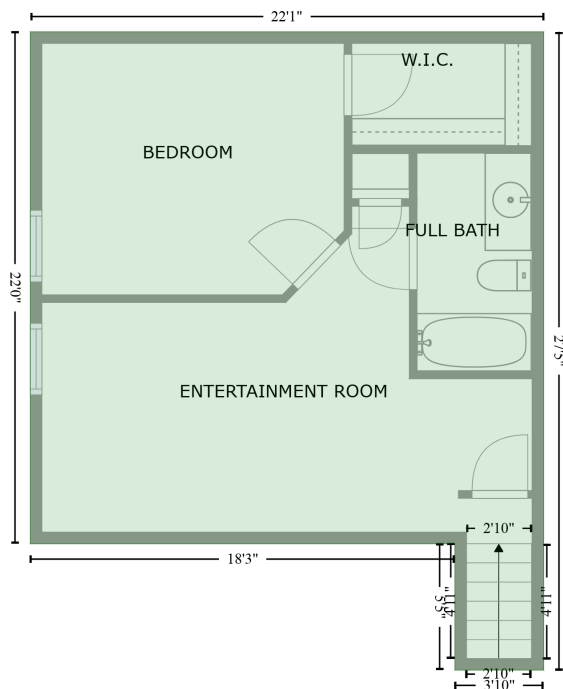
Gross Living Area: 2376 sq. ft

Space	Area (sq. ft)	Calculation <small>Coordinate Polygon Area Algorithm using inches</small>
(Non-living area)		$+ (336.3 + 111.4) * (914.4 - 914.4) + (111.4 + 111.4) * (914.4 - 680.7) + (111.4 + 330.3) * (680.7 - 680.7) * 0.5 * 0.00694$
COVERED PATIO (Non-living area)	181	$-((385.4 + 385.4) * (177.4 - 272.5) + (385.4 + 111.4) * (272.5 - 272.5) + (111.4 + 111.4) * (272.5 - 177.4) + (111.4 + 385.4) * (177.4 - 177.4)) * 0.5 * 0.00694$
PATIO (Non-living area)	185	$-((388.3 + 388.3) * (80.3 - 122) + (388.3 + 385.4) * (122 - 122) + (385.4 + 385.4) * (122 - 177.4) + (385.4 + 111.4) * (177.4 - 177.4) + (111.4 + 111.4) * (177.4 - 80.3) + (111.4 + 388.3) * (80.3 - 80.3)) * 0.5 * 0.00694$

284 Abercorn Drive, Triana, Madison, Madison County, Alabama, United States, 35756

Gross Living Area: 2376 sq. ft

FLOOR 2
[AREA: 506]



Space	Area (sq. ft)	Calculation <small>Coordinate Polygon Area Algorithm using inches</small>
FLOOR 2 (Living area)	506	$-((376.2 + 376.2) * (379.1 - 708) + (376.2 + 330.4) * (708 - 708) + (330.4 + 330.4) * (708 - 643) + (330.4 + 111.5) * (643 - 643) + (111.5 + 111.5) * (643 - 379.1) + (111.5 + 376.2) * (379.1 - 379.1)) * 0.5 * 0.00694$