

2-935 Ewen Ave

New Westminster BC V3M 0A1

Lower Level Area: 275 SQ.FT.

Main Level Area: 590 SQ.FT.

Upper Level Area: 615 SQ.FT.

Total Area 1,480 SQ.FT.

Garage Area: 275 SQ.FT.

4



BEDROOMS

3

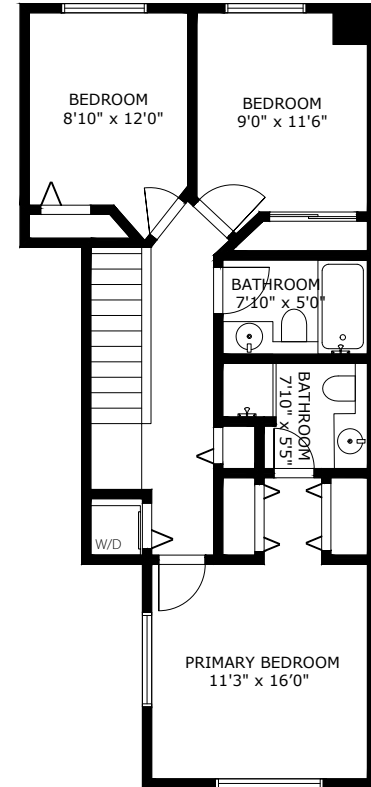
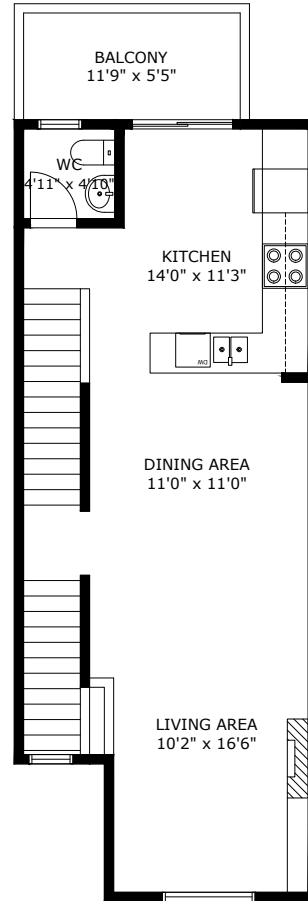
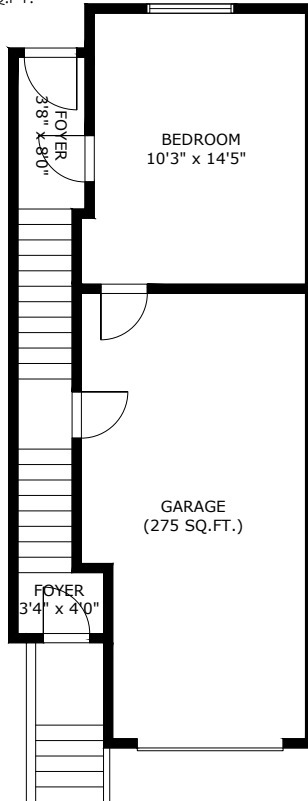


BATHROOMS

1,480



TOTAL SQ.FT.



2-935 EWEN AVE NEW WESTMINSTER BC V3M 0A1

Measurements are approximate and may not be to scale. Gross measurements provided by agent.
The floor plan illustration is not suitable for construction/architectural purposes.
This communication is not intended to cause or induce breach of an existing agency agreement

3D IMMERSIVE
Tours Photos Floor Plans

Professionally measured by 3D Immersive Marketing Ltd.

Lead Floor Planner: *Sara Alexander*
Quality Assurance: *Dianne Graham*