

Home report

3811 Dale Street, Proctor, Tacoma, Pierce County, Washington,
United States, 98407



Total Area: 4332 sq. ft
Below Ground: 468 sq. ft, Floor 2: 1932 sq. ft, Floor 3: 1932 sq. ft
Excluded: Garage 602 sq. ft, Rv Garage 640 sq. ft, Storage 67 sq. ft, Coverd Porch 343 sq. ft, Covered Porch 284 sq. ft, Outdoor Balcony 177 sq. ft, Walls: 314 sq. ft

Property summary

**3**
Floors

**5**
Bedrooms

**4**
Bathrooms

Home report

**3811 Dale Street, Proctor, Tacoma, Pierce County, Washington,
United States, 98407**



1
Half baths



2
Garages

Home report

3811 Dale Street, Proctor, Tacoma, Pierce County, Washington,
United States, 98407



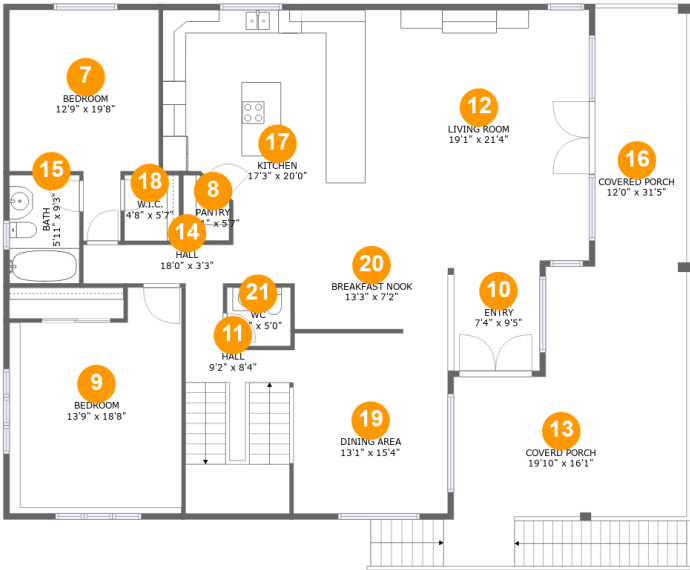
Room dimensions

Floor 1 Below ground Total:468sqft Excluded: 1309sqft

| # | | Max Dimensions | sqft | Included |
|---|--------------|----------------|------------|----------|
| 1 | Hall | 8'10" x 6'7" | 70 sq. ft | Yes |
| 2 | Garage | 28'4" x 21'3" | 602 sq. ft | No |
| 3 | Theatre Room | 16'8" x 21'4" | 345 sq. ft | Yes |
| 4 | Rv Garage | 30'3" x 21'2" | 640 sq. ft | No |
| 5 | Storage | 8'10" x 7'8" | 65 sq. ft | No |
| 6 | Bath | 5'1" x 8'10" | 45 sq. ft | Yes |

Home report

3811 Dale Street, Proctor, Tacoma, Pierce County, Washington,
United States, 98407



Room dimensions

Floor 2 Total:1932sqft Excluded: 627sqft

| # | | Max Dimensions | sqft | Included |
|----|---------------|----------------|------------|----------|
| 7 | Bedroom | 12'9" x 19'8" | 193 sq. ft | Yes |
| 8 | Pantry | 3'11" x 5'7" | 19 sq. ft | Yes |
| 9 | Bedroom | 13'9" x 18'8" | 252 sq. ft | Yes |
| 10 | Entry | 7'4" x 9'5" | 71 sq. ft | Yes |
| 11 | Hall | 9'2" x 8'4" | 144 sq. ft | Yes |
| 12 | Living Room | 19'1" x 21'4" | 397 sq. ft | Yes |
| 13 | Coverd Porch | 19'10" x 16'1" | 343 sq. ft | No |
| 14 | Hall | 18'0" x 3'3" | 59 sq. ft | Yes |
| 15 | Bath | 5'11" x 9'3" | 55 sq. ft | Yes |
| 16 | Covered Porch | 12'0" x 31'5" | 284 sq. ft | No |
| 17 | Kitchen | 17'3" x 20'0" | 311 sq. ft | Yes |

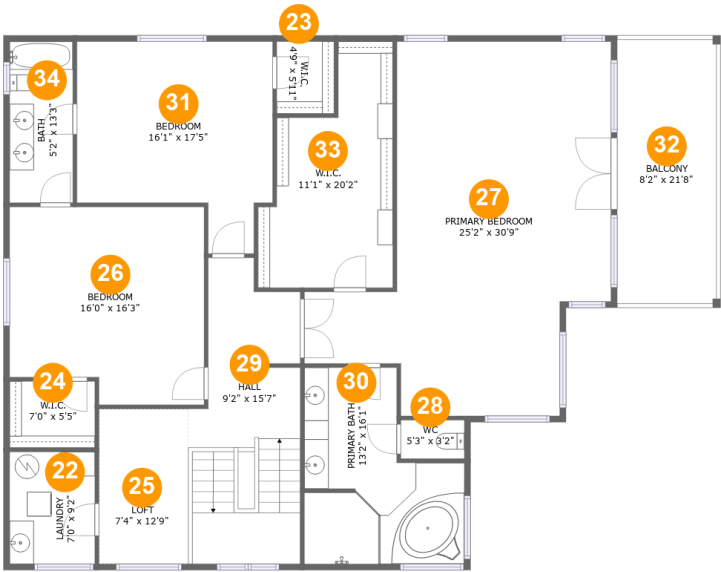
Home report

**3811 Dale Street, Proctor, Tacoma, Pierce County, Washington,
United States, 98407**

| # | | Max Dimensions | sqft | Included |
|----|----------------|----------------|------------|----------|
| 18 | W.I.C. | 4'8" x 5'7" | 26 sq. ft | Yes |
| 19 | Dining Area | 13'1" x 15'4" | 203 sq. ft | Yes |
| 20 | Breakfast Nook | 13'3" x 7'2" | 97 sq. ft | Yes |
| 21 | WC | 5'5" x 5'0" | 27 sq. ft | Yes |

Home report

3811 Dale Street, Proctor, Tacoma, Pierce County, Washington,
United States, 98407



Room dimensions

Floor 3 Total:1932sqft Excluded: 177sqft

| # | | Max Dimensions | sqft | Included |
|----|-----------------|----------------|------------|----------|
| 22 | Laundry | 7'0" x 9'2" | 64 sq. ft | Yes |
| 23 | W.I.C. | 4'9" x 5'11" | 28 sq. ft | Yes |
| 24 | W.I.C. | 7'0" x 5'5" | 38 sq. ft | Yes |
| 25 | Loft | 7'4" x 12'9" | 93 sq. ft | Yes |
| 26 | Bedroom | 16'0" x 16'3" | 243 sq. ft | Yes |
| 27 | Primary Bedroom | 25'2" x 30'9" | 544 sq. ft | Yes |
| 28 | WC | 5'3" x 3'2" | 17 sq. ft | Yes |
| 29 | Hall | 9'2" x 15'7" | 199 sq. ft | Yes |
| 30 | Primary Bath | 13'2" x 16'1" | 167 sq. ft | Yes |
| 31 | Bedroom | 16'1" x 17'5" | 228 sq. ft | Yes |
| 32 | Balcony | 8'2" x 21'8" | 177 sq. ft | No |

Home report

3811 Dale Street, Proctor, Tacoma, Pierce County, Washington,
United States, 98407

| # | | Max Dimensions | sqft | Included |
|----|--------|----------------|------------|----------|
| 33 | W.I.C. | 11'1" x 20'2" | 171 sq. ft | Yes |
| 34 | Bath | 5'2" x 13'3" | 69 sq. ft | Yes |

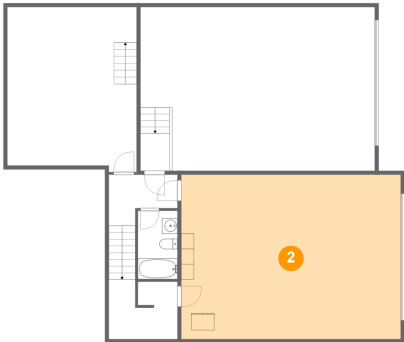
1 Floor 1 - Hall



Max Dimensions: 8'10" x 6'7"
Calculated Area: 70 sq. ft
Included: Yes

Heated: Yes
Finished: Yes
Enclosed: Yes
Contiguous: Yes
Permitted: Yes
Wet space: No
Addition: No
Conversion: No

2 Floor 1 - Garage



Max Dimensions: 28'4" x 21'3"
Calculated Area: 602 sq. ft
Included: No

Heated: No
Finished: No
Enclosed: Yes
Contiguous: Yes
Permitted: Yes
Wet space: No
Addition: No
Conversion: No

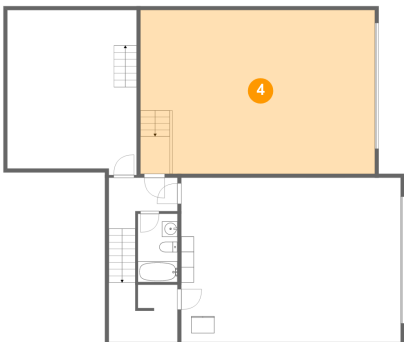
3 Floor 1 - Theatre Room



Max Dimensions: 16'8" x 21'4"
Calculated Area: 345 sq. ft
Included: Yes

Heated: Yes
Finished: Yes
Enclosed: Yes
Contiguous: Yes
Permitted: Yes
Wet space: No
Addition: No
Conversion: No

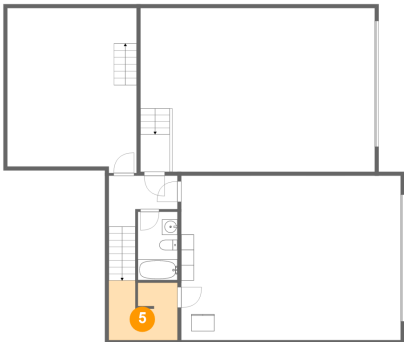
4 Floor 1 - Rv Garage



Max Dimensions: 30'3" x 21'2"
Calculated Area: 640 sq. ft
Included: No

Heated: No
Finished: No
Enclosed: Yes
Contiguous: Yes
Permitted: Yes
Wet space: No
Addition: No
Conversion: No

5 Floor 1 - Storage



Max Dimensions: 8'10" x 7'8"
Calculated Area: 65 sq. ft
Included: No

Heated: No
Finished: No
Enclosed: No
Contiguous: Yes
Permitted: Yes
Wet space: No
Addition: No
Conversion: No

Home report

3811 Dale Street, Proctor, Tacoma, Pierce County, Washington,
United States, 98407

6 Floor 1 - Bath



Max Dimensions: 5'1" x 8'10"
Calculated Area: 45 sq. ft
Included: Yes

Heated: Yes
Finished: Yes
Enclosed: Yes
Contiguous: Yes
Permitted: Yes
Wet space: Yes
Addition: No
Conversion: No

7 Floor 2 - Bedroom



Max Dimensions: 12'9" x 19'8"
Calculated Area: 193 sq. ft
Included: Yes

Heated: Yes
Finished: Yes
Enclosed: Yes
Contiguous: Yes
Permitted: Yes
Wet space: No
Addition: No
Conversion: No

8 Floor 2 - Pantry



Max Dimensions: 3'11" x 5'7"
Calculated Area: 19 sq. ft
Included: Yes

Heated: Yes
Finished: Yes
Enclosed: Yes
Contiguous: Yes
Permitted: Yes
Wet space: No
Addition: No
Conversion: No

3811 Dale Street, Proctor, Tacoma, Pierce County, Washington,
United States, 98407

9 Floor 2 - Bedroom



Max Dimensions: 13'9" x 18'8"
Calculated Area: 252 sq. ft
Included: Yes

Heated: Yes
Finished: Yes
Enclosed: Yes
Contiguous: Yes
Permitted: Yes
Wet space: No
Addition: No
Conversion: No

10 Floor 2 - Entry



Max Dimensions: 7'4" x 9'5"
Calculated Area: 71 sq. ft
Included: Yes

Heated: Yes
Finished: Yes
Enclosed: Yes
Contiguous: Yes
Permitted: Yes
Wet space: No
Addition: No
Conversion: No

11 Floor 2 - Hall



Max Dimensions: 9'2" x 8'4"
Calculated Area: 144 sq. ft
Included: Yes

Heated: Yes
Finished: Yes
Enclosed: Yes
Contiguous: Yes
Permitted: Yes
Wet space: No
Addition: No
Conversion: No

3811 Dale Street, Proctor, Tacoma, Pierce County, Washington,
United States, 98407

12 Floor 2 - Living Room



Max Dimensions: 19'1" x 21'4"
Calculated Area: 397 sq. ft
Included: Yes

Heated: Yes
Finished: Yes
Enclosed: Yes
Contiguous: Yes
Permitted: Yes
Wet space: No
Addition: No
Conversion: No

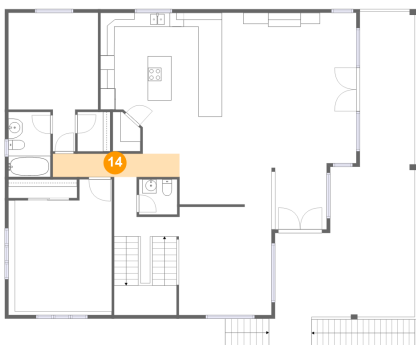
13 Floor 2 - Coverd Porch



Max Dimensions: 19'10" x 16'1"
Calculated Area: 343 sq. ft
Included: No

Heated: No
Finished: Yes
Enclosed: No
Contiguous: Yes
Permitted: Yes
Wet space: No
Addition: No
Conversion: No

14 Floor 2 - Hall



Max Dimensions: 18'0" x 3'3"
Calculated Area: 59 sq. ft
Included: Yes

Heated: Yes
Finished: Yes
Enclosed: Yes
Contiguous: Yes
Permitted: Yes
Wet space: No
Addition: No
Conversion: No

3811 Dale Street, Proctor, Tacoma, Pierce County, Washington,
United States, 98407

15 Floor 2 - Bath



Max Dimensions: 5'11" x 9'3"
Calculated Area: 55 sq. ft
Included: Yes

Heated: Yes
Finished: Yes
Enclosed: Yes
Contiguous: Yes
Permitted: Yes
Wet space: Yes
Addition: No
Conversion: No

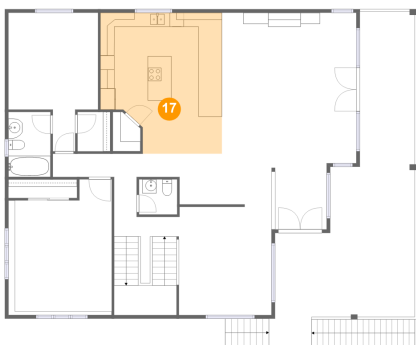
16 Floor 2 - Covered Porch



Max Dimensions: 12'0" x 31'5"
Calculated Area: 284 sq. ft
Included: No

Heated: No
Finished: Yes
Enclosed: No
Contiguous: Yes
Permitted: Yes
Wet space: No
Addition: No
Conversion: No

17 Floor 2 - Kitchen



Max Dimensions: 17'3" x 20'0"
Calculated Area: 311 sq. ft
Included: Yes

Heated: Yes
Finished: Yes
Enclosed: Yes
Contiguous: Yes
Permitted: Yes
Wet space: No
Addition: No
Conversion: No

Home report

3811 Dale Street, Proctor, Tacoma, Pierce County, Washington,
United States, 98407

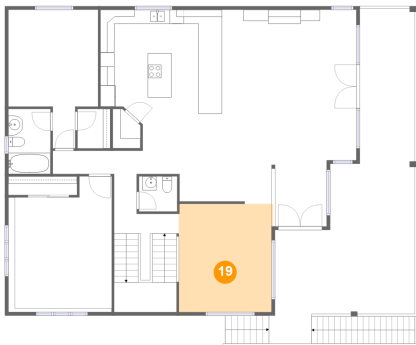
18 Floor 2 - W.I.C.



Max Dimensions: 4'8" x 5'7"
Calculated Area: 26 sq. ft
Included: Yes

Heated: Yes
Finished: Yes
Enclosed: Yes
Contiguous: Yes
Permitted: Yes
Wet space: No
Addition: No
Conversion: No

19 Floor 2 - Dining Area



Max Dimensions: 13'1" x 15'4"
Calculated Area: 203 sq. ft
Included: Yes

Heated: Yes
Finished: Yes
Enclosed: Yes
Contiguous: Yes
Permitted: Yes
Wet space: No
Addition: No
Conversion: No

20 Floor 2 - Breakfast Nook



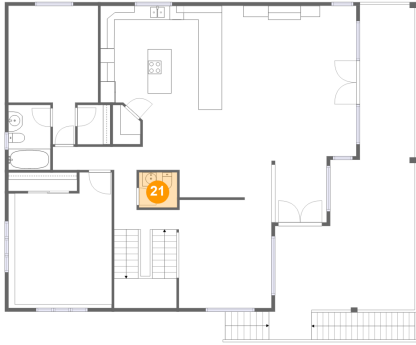
Max Dimensions: 13'3" x 7'2"
Calculated Area: 97 sq. ft
Included: Yes

Heated: Yes
Finished: Yes
Enclosed: Yes
Contiguous: Yes
Permitted: Yes
Wet space: No
Addition: No
Conversion: No

Home report

3811 Dale Street, Proctor, Tacoma, Pierce County, Washington,
United States, 98407

21 Floor 2 - WC



Max Dimensions: 5'5" x 5'0"
Calculated Area: 27 sq. ft
Included: Yes

Heated: Yes
Finished: Yes
Enclosed: Yes
Contiguous: Yes
Permitted: Yes
Wet space: Yes
Addition: No
Conversion: No

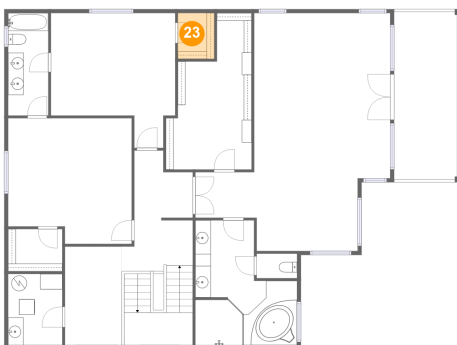
22 Floor 3 - Laundry



Max Dimensions: 7'0" x 9'2"
Calculated Area: 64 sq. ft
Included: Yes

Heated: Yes
Finished: Yes
Enclosed: Yes
Contiguous: Yes
Permitted: Yes
Wet space: No
Addition: No
Conversion: No

23 Floor 3 - W.I.C.



Max Dimensions: 4'9" x
5'11"
Calculated Area: 28 sq. ft
Included: Yes

Heated: Yes
Finished: Yes
Enclosed: Yes
Contiguous:
Yes
Permitted: Yes
Wet space: No
Addition: No
Conversion: No

Home report

3811 Dale Street, Proctor, Tacoma, Pierce County, Washington,
United States, 98407

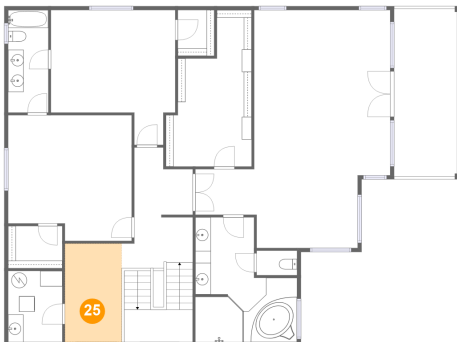
24 Floor 3 - W.I.C.



Max Dimensions: 7'0" x 5'5"
Calculated Area: 38 sq. ft
Included: Yes

Heated: Yes
Finished: Yes
Enclosed: Yes
Contiguous: Yes
Permitted: Yes
Wet space: No
Addition: No
Conversion: No

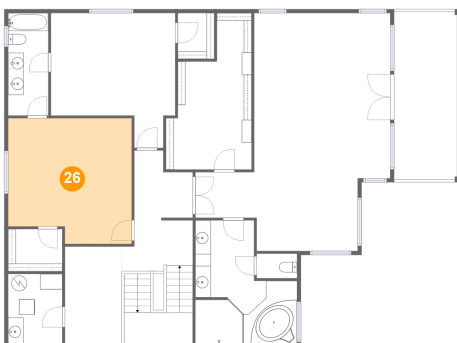
25 Floor 3 - Loft



Max Dimensions: 7'4" x
12'9"
Calculated Area: 93 sq. ft
Included: Yes

Heated: Yes
Finished: Yes
Enclosed: Yes
Contiguous:
Yes
Permitted: Yes
Wet space: No
Addition: No
Conversion: No

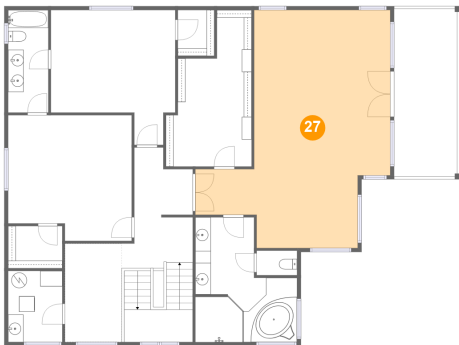
26 Floor 3 - Bedroom



Max Dimensions: 16'0" x
16'3"
Calculated Area: 243 sq. ft
Included: Yes

Heated: Yes
Finished: Yes
Enclosed: Yes
Contiguous:
Yes
Permitted: Yes
Wet space: No
Addition: No
Conversion: No

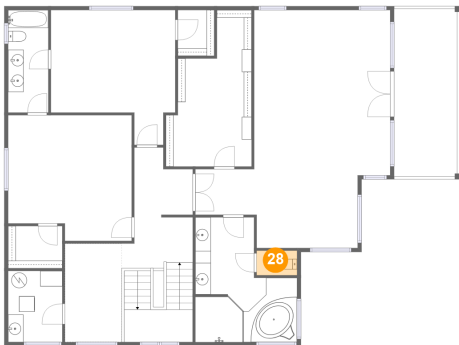
27 Floor 3 - Primary Bedroom



Max Dimensions: 25'2" x 30'9"
Calculated Area: 544 sq. ft
Included: Yes

Heated: Yes
Finished: Yes
Enclosed: Yes
Contiguous: Yes
Permitted: Yes
Wet space: No
Addition: No
Conversion: No

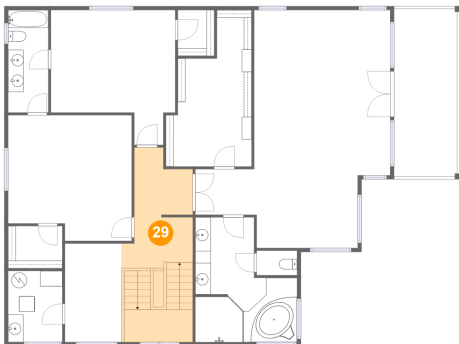
28 Floor 3 - WC



Max Dimensions: 5'3" x 3'2"
Calculated Area: 17 sq. ft
Included: Yes

Heated: Yes
Finished: Yes
Enclosed: Yes
Contiguous: Yes
Permitted: Yes
Wet space: Yes
Addition: No
Conversion: No

29 Floor 3 - Hall

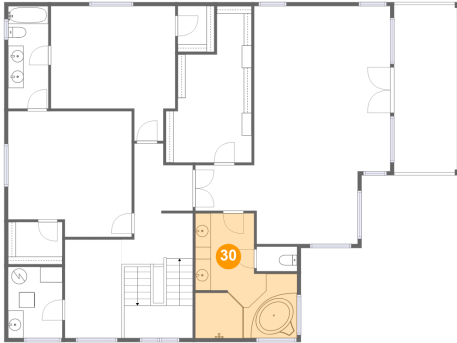


Max Dimensions: 9'2" x 15'7"
Calculated Area: 199 sq. ft
Included: Yes

Heated: Yes
Finished: Yes
Enclosed: Yes
Contiguous: Yes
Permitted: Yes
Wet space: No
Addition: No
Conversion: No

3811 Dale Street, Proctor, Tacoma, Pierce County, Washington,
United States, 98407

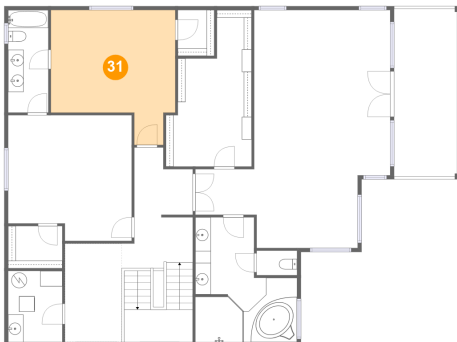
30 Floor 3 - Primary Bath



Max Dimensions: 13'2" x 16'1"
Calculated Area: 167 sq. ft
Included: Yes

Heated: Yes
Finished: Yes
Enclosed: Yes
Contiguous: Yes
Permitted: Yes
Wet space: Yes
Addition: No
Conversion: No

31 Floor 3 - Bedroom



Max Dimensions: 16'1" x 17'5"
Calculated Area: 228 sq. ft
Included: Yes

Heated: Yes
Finished: Yes
Enclosed: Yes
Contiguous: Yes
Permitted: Yes
Wet space: No
Addition: No
Conversion: No

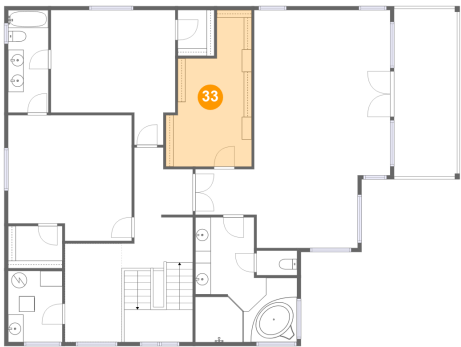
32 Floor 3 - Balcony



Max Dimensions: 8'2" x 21'8"
Calculated Area: 177 sq. ft
Included: No

Heated: No
Finished: Yes
Enclosed: No
Contiguous: Yes
Permitted: Yes
Wet space: No
Addition: No
Conversion: No

33 Floor 3 - W.I.C.



Max Dimensions: 11'1" x 20'2"
Calculated Area: 171 sq. ft
Included: Yes

Heated: Yes
Finished: Yes
Enclosed: Yes
Contiguous: Yes
Permitted: Yes
Wet space: No
Addition: No
Conversion: No

34 Floor 3 - Bath



Max Dimensions: 5'2" x 13'3"
Calculated Area: 69 sq. ft
Included: Yes

Heated: Yes
Finished: Yes
Enclosed: Yes
Contiguous: Yes
Permitted: Yes
Wet space: Yes
Addition: No
Conversion: No