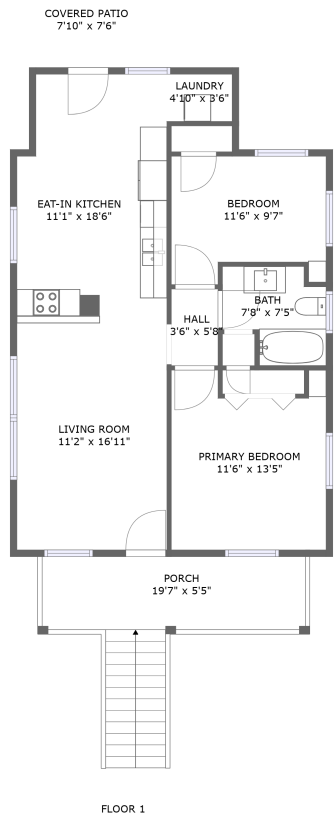


Home report

1521 Church Avenue Southeast, Fallon, Roanoke, Roanoke city,
Virginia, United States, 24013



Total Area: 822 sq. ft
Floor 1: 822 sq. ft
Excluded: Outdoor Patio Covered 59 sq. ft, Outdoor Porch 152 sq. ft

Property summary

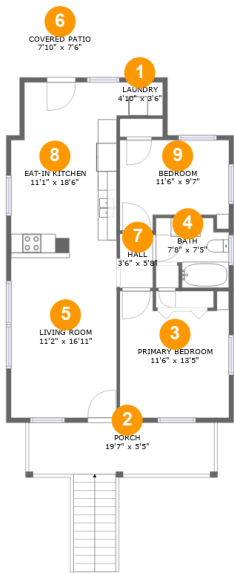
 **1** Floors

 **2** Bedrooms

 **1** Bathrooms

Home report

1521 Church Avenue Southeast, Fallon, Roanoke, Roanoke city,
Virginia, United States, 24013



Room dimensions

Floor 1 Total:822sqft Excluded: 211sqft

#		Max Dimensions	sqft	Included
1	Laundry	4'10" x 3'6"	17 sq. ft	Yes
2	Porch	19'7" x 5'5"	152 sq. ft	No
3	Primary Bedroom	11'6" x 13'5"	140 sq. ft	Yes
4	Bath	7'8" x 7'5"	47 sq. ft	Yes
5	Living Room	11'2" x 16'11"	188 sq. ft	Yes
6	Covered Patio	7'10" x 7'6"	59 sq. ft	No
7	Hall	3'6" x 5'8"	20 sq. ft	Yes
8	Eat-in Kitchen	11'1" x 18'6"	198 sq. ft	Yes
9	Bedroom	11'6" x 9'7"	98 sq. ft	Yes

1 Floor 1 - Laundry



Max Dimensions: 4'10" x 3'6"
Calculated Area: 17 sq. ft
Included: Yes

Heated: Yes
Finished: Yes
Enclosed: Yes
Contiguous: Yes
Permitted: Yes
Wet space: No
Addition: No
Conversion: No

2 Floor 1 - Porch



Max Dimensions: 19'7" x 5'5"
Calculated Area: 152 sq. ft
Included: No

Heated: No
Finished: Yes
Enclosed: No
Contiguous: Yes
Permitted: Yes
Wet space: No
Addition: No
Conversion: No

3 Floor 1 - Primary Bedroom



Max Dimensions: 11'6" x 13'5"
Calculated Area: 140 sq. ft
Included: Yes

Heated: Yes
Finished: Yes
Enclosed: Yes
Contiguous: Yes
Permitted: Yes
Wet space: No
Addition: No
Conversion: No

4 Floor 1 - Bath



Max Dimensions: 7'8" x 7'5"
Calculated Area: 47 sq. ft
Included: Yes

Heated: Yes
Finished: Yes
Enclosed: Yes
Contiguous: Yes
Permitted: Yes
Wet space: Yes
Addition: No
Conversion: No

5 Floor 1 - Living Room



Max Dimensions: 11'2" x 16'11"
Calculated Area: 188 sq. ft
Included: Yes

Heated: Yes
Finished: Yes
Enclosed: Yes
Contiguous: Yes
Permitted: Yes
Wet space: No
Addition: No
Conversion: No

6 Floor 1 - Covered Patio



Max Dimensions: 7'10" x 7'6"
Calculated Area: 59 sq. ft
Included: No

Heated: No
Finished: Yes
Enclosed: No
Contiguous: Yes
Permitted: Yes
Wet space: No
Addition: No
Conversion: No

7 Floor 1 - Hall



Max Dimensions: 3'6" x 5'8"
Calculated Area: 20 sq. ft
Included: Yes

Heated: Yes
Finished: Yes
Enclosed: Yes
Contiguous: Yes
Permitted: Yes
Wet space: No
Addition: No
Conversion: No

8 Floor 1 - Eat-in Kitchen



Max Dimensions: 11'1" x 18'6"
Calculated Area: 198 sq. ft
Included: Yes

Heated: Yes
Finished: Yes
Enclosed: Yes
Contiguous: Yes
Permitted: Yes
Wet space: No
Addition: No
Conversion: No

1521 Church Avenue Southeast, Fallon, Roanoke, Roanoke city,
Virginia, United States, 24013

9 Floor 1 - Bedroom



Max Dimensions: 11'6" x 9'7"
Calculated Area: 98 sq. ft
Included: Yes

Heated: Yes
Finished: Yes
Enclosed: Yes
Contiguous: Yes
Permitted: Yes
Wet space: No
Addition: No
Conversion: No