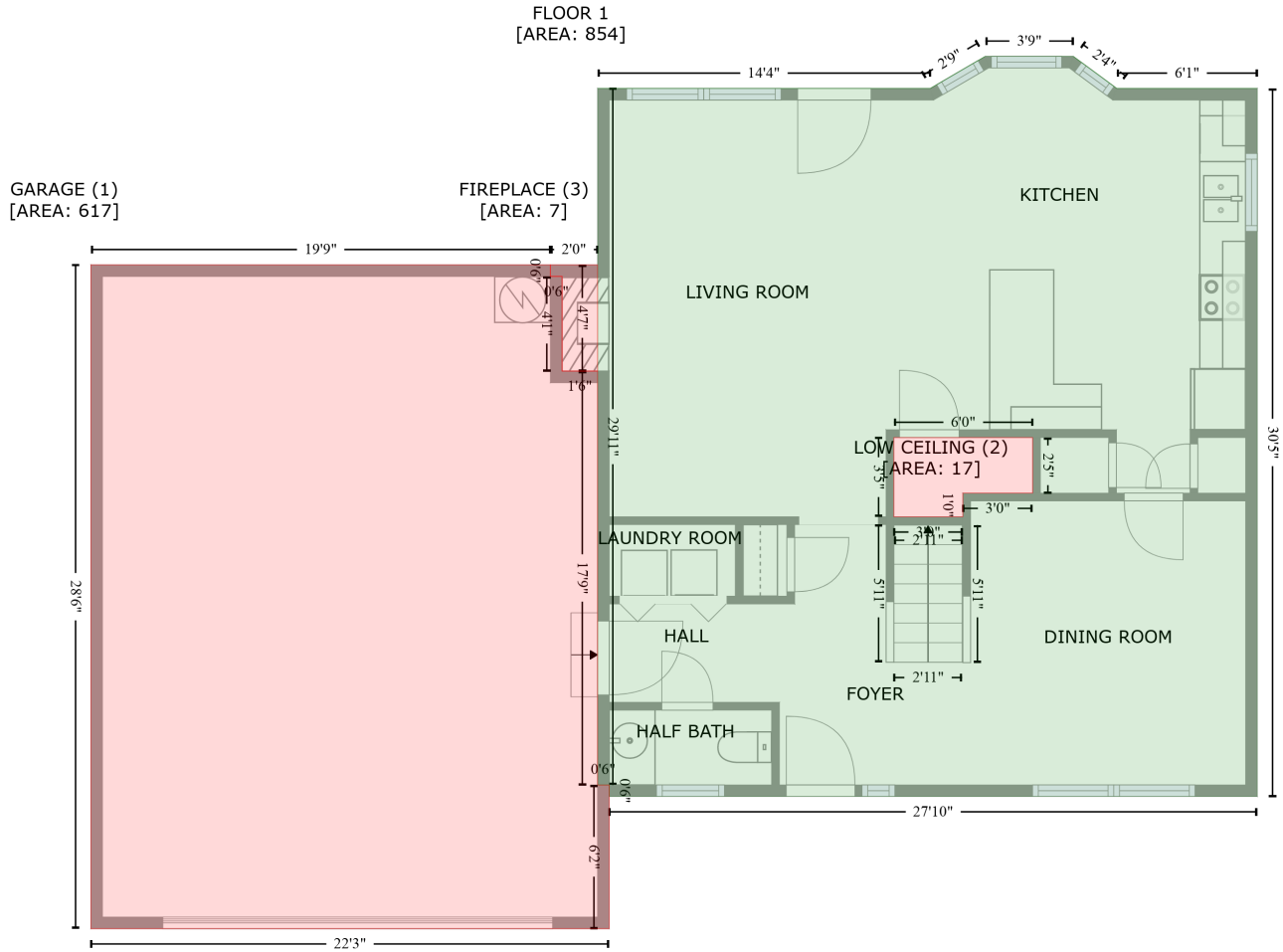


# 603 Vintage Grove Lane, Apex, Wake County, North Carolina, United States, 27502

Gross Living Area: 1716 sq. ft



Space	Area (sq. ft)	Calculation
FLOOR 1 (Living area)	854	$-(506.3 + 528.7) * (-1.3 - 15.3) + (528.7 + 601.3) * (15.3 - 15.3) + (601.3 + 601.3) * (15.3 - 380.4) + (601.3 + 266.9) * (380.4 - 380.4) + (266.9 + 266.9) * (380.4 - 374.4) + (266.9 + 260.9) * (374.4 - 374.4) + (260.9 + 260.9) * (374.4 - 15.3) + (260.9 + 432.6) * (15.3 - 15.3) + (432.6 + 461) * (15.3 - 1.3) + (461 + 506.3) * (-1.3 - -1.3) * 0.5 * 0.00694 + -(485.4 + 413.8) * (195.3 - 195.3) + (413.8 + 413.8) * (195.3 - 236.2) + (413.8 + 449.4) * (236.2 - 236.2) + (449.4 + 449.4) * (236.2 - 224) + (449.4 + 485.4) * (224 - 224) + (485.4 + 485.4) * (224 - 195.3) * 0.5 * 0.00694$
GARAGE (Non-living area)	617	$-(236.6 + 236.6) * (106.2 - 112.2) + (236.6 + 242.6) * (112.2 - 112.2) + (242.6 + 242.6) * (112.2 - 161) + (242.6 + 260.9) * (161 - 161) + (260.9 + 260.9) * (161 - 374.4) + (260.9 + 266.9) * (374.4 - 448.5) + (266.9 + -0.5) * (448.5 - 448.5) + (-0.5 + -0.5) * (448.5 - 106.2) + (-0.5 + 236.6) * (106.2 - 106.2) * 0.5 * 0.00694$
LOW CEILING (Non-living area)	17	$-(485.4 + 485.4) * (195.3 - 224) + (485.4 + 449.4) * (224 - 224) + (449.4 + 449.4) * (224 - 236.2) + (449.4 + 413.8) * (236.2 - 236.2) + (413.8 + 413.8) * (236.2 - 195.3) + (413.8 + 485.4) * (195.3 - 195.3) * 0.5 * 0.00694$
FIREPLACE (Non-living area)	7	$-(260.9 + 260.9) * (106.2 - 161) + (260.9 + 242.6) * (161 - 161) + (242.6 + 242.6) * (161 - 112.2) + (242.6 + 236.6) * (112.2 - 112.2) + (236.6 + 236.6) * (112.2 - 106.2) + (236.6 + 260.9) * (106.2 -$

# 603 Vintage Grove Lane, Apex, Wake County, North Carolina, United States, 27502

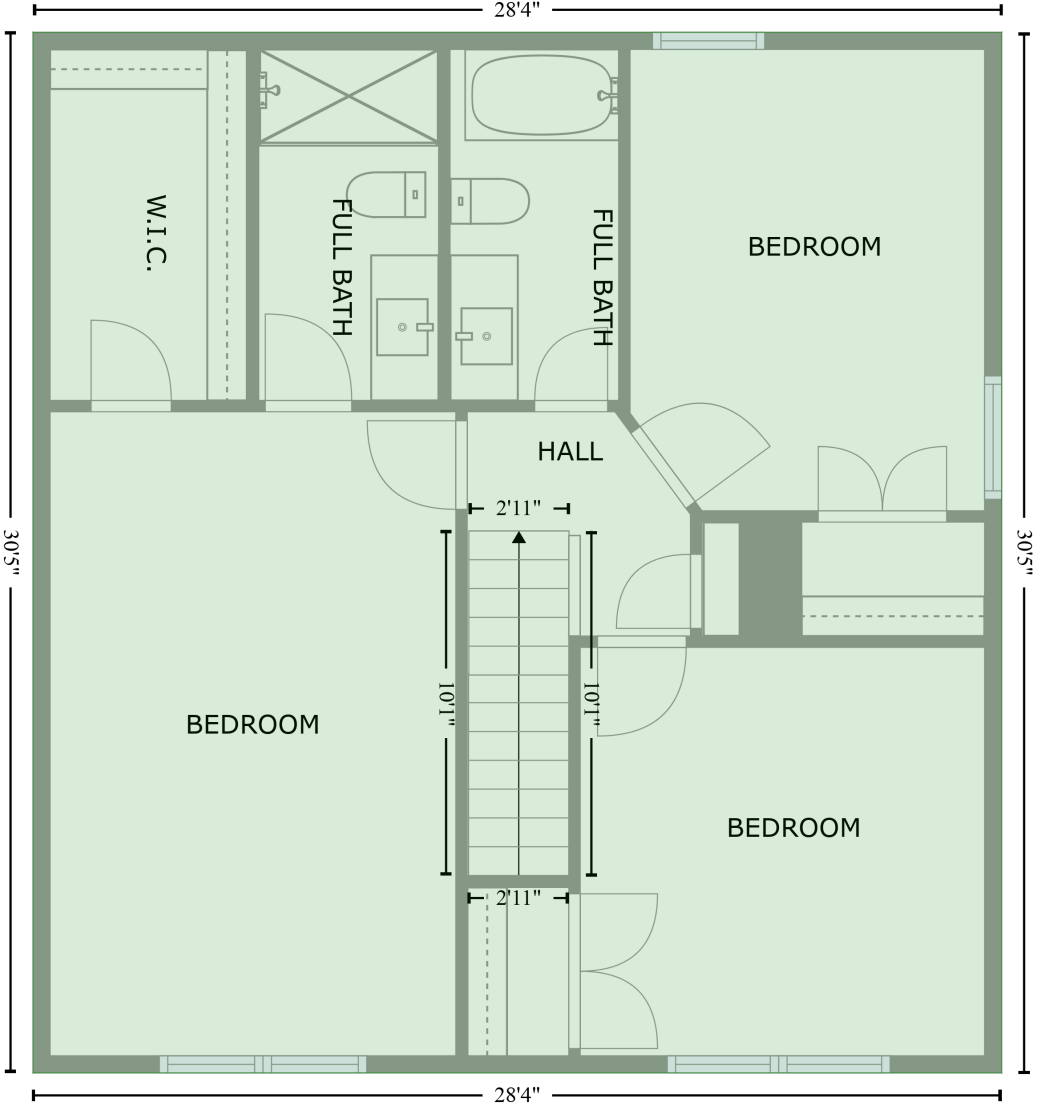
Gross Living Area: 1716 sq. ft

Space	Area (sq. ft)	Calculation <small>Coordinate Polygon Area Algorithm using inches</small>
		106.2)) * 0.5 * 0.00694

603 Vintage Grove Lane, Apex, Wake County, North Carolina, United States, 27502

Gross Living Area: 1716 sq. ft

FLOOR 2  
[AREA: 862]



Space	Area (sq. ft)	Calculation <small>Coordinate Polygon Area Algorithm using inches</small>
FLOOR 2 (Living area)	862	$-((600.9 + 600.9) * (15.3 - 380.4) + (600.9 + 260.9) * (380.4 - 380.4) + (260.9 + 260.9) * (380.4 - 15.3) + (260.9 + 600.9) * (15.3 - 15.3)) * 0.5 * 0.00694$