

140 Springview Lane Northwest, Huntsville, Madison County, Alabama, United States, 35806



Property Summary


 **1** garages

 **3** bedrooms

 **2** bathrooms

 **0** half baths

 **2** floors

 **2,141** Gross Living Area sqft

 **2,656** total sqft

140 Springview Lane Northwest, Huntsville, Madison County, Alabama, United States, 35806



Room Dimensions

Floor 1

Total sqft: 2221

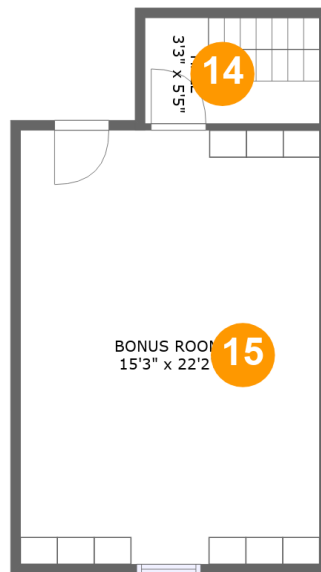
Living area: 1706

#	Room name	Dimensions	Area (sqft)	Counted as Living Area
1	Kitchen	12'5" x 12'5"	154 sq. ft	Yes
2	Foyer	10'1" x 7'7"	114 sq. ft	Yes
3	Living Room	18'7" x 16'2"	302 sq. ft	Yes
4	Bedroom	14'1" x 11'0"	155 sq. ft	Yes
5	W.i.c.	9'8" x 5'4"	52 sq. ft	Yes
6	Primary Bath	9'8" x 11'1"	93 sq. ft	Yes
7	Hall	5'10" x 5'3"	31 sq. ft	Yes
8	Bath	9'6" x 4'9"	46 sq. ft	Yes
9	Hall	10'10" x 8'11"	58 sq. ft	Yes
10	Dining Area	12'5" x 10'3"	127 sq. ft	Yes
11	Garage	20'10" x 24'2"	483 sq. ft	No

**140 Springview Lane Northwest, Huntsville,
Madison County, Alabama, United States, 35806**

#	Room name	Dimensions	Area (sqft)	Counted as Living Area
12	Primary Bedroom	15'3" x 13'10"	211 sq. ft	Yes
13	Bedroom	10'10" x 13'5"	127 sq. ft	Yes

140 Springview Lane Northwest, Huntsville, Madison County, Alabama, United States, 35806



Room Dimensions

Floor 2

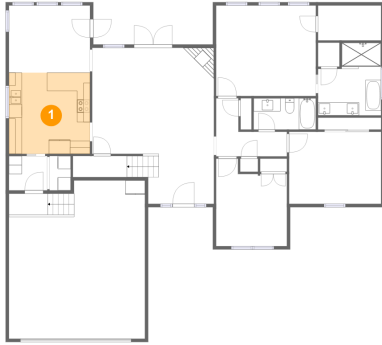
Total sqft: 435

Living area: 435

#	Room name	Dimensions	Area (sqft)	Counted as Living Area
14	Hall	3'3" x 5'5"	48 sq. ft	Yes
15	Bonus Room	15'3" x 22'2"	339 sq. ft	Yes

140 Springview Lane Northwest, Huntsville, Madison County, Alabama, United States, 35806

1 Floor 1 - Kitchen



Dimensions: 12'5" x 12'5"
Area: 154 sq. ft
Counted as Living Area:
Yes

Heated: Yes
Finished: Yes
Enclosed: Yes
Contiguous:
Yes
Permitted: Yes
Wet Space: No
Addition: No
Conversion: No

2 Floor 1 - Foyer



Dimensions: 10'1" x 7'7"
Area: 114 sq. ft
Counted as Living Area:
Yes

Heated: Yes
Finished: Yes
Enclosed: Yes
Contiguous:
Yes
Permitted: Yes
Wet Space: No
Addition: No
Conversion: No

140 Springview Lane Northwest, Huntsville, Madison County, Alabama, United States, 35806

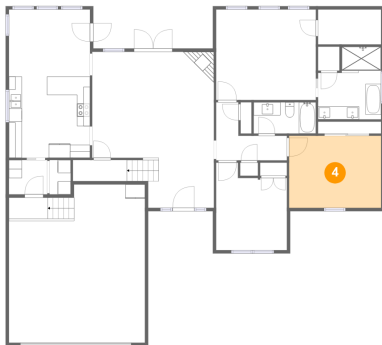
3 Floor 1 - Living Room



Dimensions: 18'7" x 16'2"
Area: 302 sq. ft
Counted as Living Area:
Yes

Heated: Yes
Finished: Yes
Enclosed: Yes
Contiguous:
Yes
Permitted: Yes
Wet Space: No
Addition: No
Conversion: No

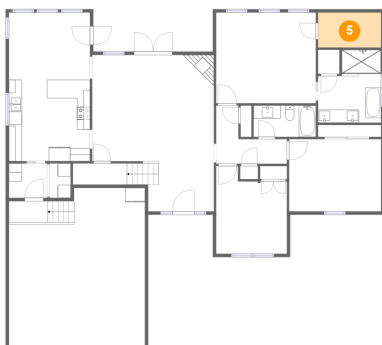
4 Floor 1 - Bedroom



Dimensions: 14'1" x 11'0"
Area: 155 sq. ft
Counted as Living Area:
Yes

Heated: Yes
Finished: Yes
Enclosed: Yes
Contiguous:
Yes
Permitted: Yes
Wet Space: No
Addition: No
Conversion: No

5 Floor 1 - W.i.c.

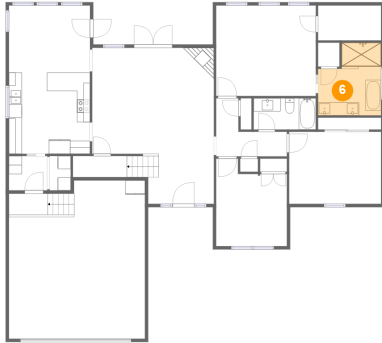


Dimensions: 9'8" x 5'4"
Area: 52 sq. ft
Counted as Living Area:
Yes

Heated: Yes
Finished: Yes
Enclosed: Yes
Contiguous:
Yes
Permitted: Yes
Wet Space: No
Addition: No
Conversion: No

140 Springview Lane Northwest, Huntsville, Madison County, Alabama, United States, 35806

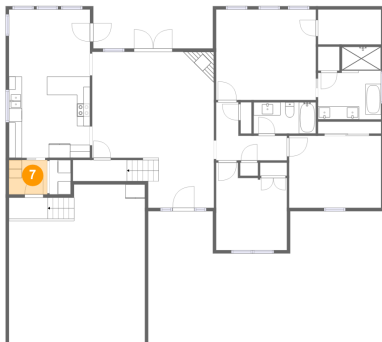
6 Floor 1 - Primary Bath



Dimensions: 9'8" x 11'1"
Area: 93 sq. ft
Counted as Living Area:
Yes

Heated: Yes
Finished: Yes
Enclosed: Yes
Contiguous:
Yes
Permitted: Yes
Wet Space: Yes
Addition: No
Conversion: No

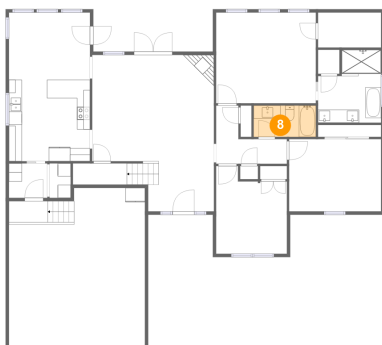
7 Floor 1 - Hall



Dimensions: 5'10" x 5'3"
Area: 31 sq. ft
Counted as Living Area:
Yes

Heated: Yes
Finished: Yes
Enclosed: Yes
Contiguous:
Yes
Permitted: Yes
Wet Space: No
Addition: No
Conversion: No

8 Floor 1 - Bath



Dimensions: 9'6" x 4'9"
Area: 46 sq. ft
Counted as Living Area:
Yes

Heated: Yes
Finished: Yes
Enclosed: Yes
Contiguous:
Yes
Permitted: Yes
Wet Space: Yes
Addition: No
Conversion: No

140 Springview Lane Northwest, Huntsville, Madison County, Alabama, United States, 35806

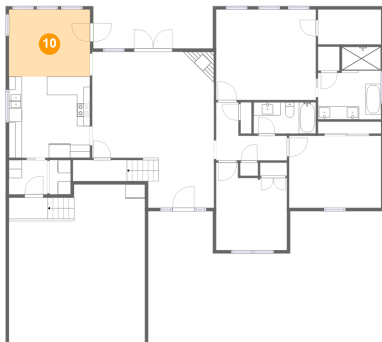
9 Floor 1 - Hall



Dimensions: 10'10" x 8'11"
Area: 58 sq. ft
Counted as Living Area:
Yes

Heated: Yes
Finished: Yes
Enclosed: Yes
Contiguous:
Yes
Permitted: Yes
Wet Space: No
Addition: No
Conversion: No

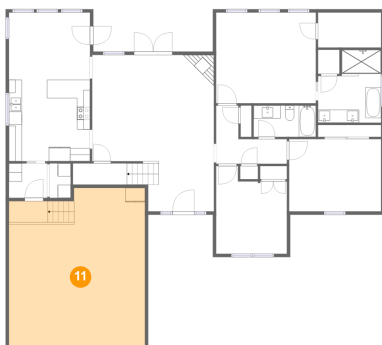
10 Floor 1 - Dining Area



Dimensions: 12'5" x 10'3"
Area: 127 sq. ft
Counted as Living Area:
Yes

Heated: Yes
Finished: Yes
Enclosed: Yes
Contiguous:
Yes
Permitted: Yes
Wet Space: No
Addition: No
Conversion: No

11 Floor 1 - Garage

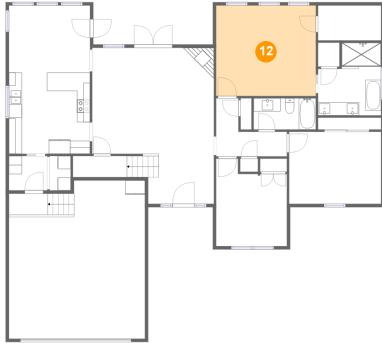


Dimensions: 20'10" x 24'2"
Area: 483 sq. ft
Counted as Living Area: No

Heated: No
Finished: No
Enclosed: Yes
Contiguous: Yes
Permitted: Yes
Wet Space: No
Addition: No
Conversion: No

140 Springview Lane Northwest, Huntsville, Madison County, Alabama, United States, 35806

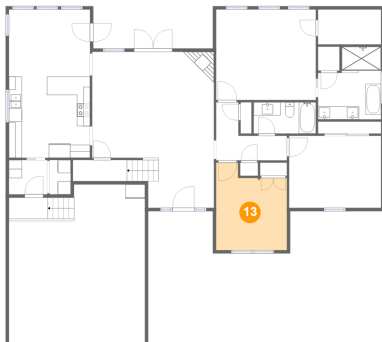
12 Floor 1 - Primary Bedroom



Dimensions: 15'3" x 13'10"
Area: 211 sq. ft
Counted as Living Area:
Yes

Heated: Yes
Finished: Yes
Enclosed: Yes
Contiguous:
Yes
Permitted: Yes
Wet Space: No
Addition: No
Conversion: No

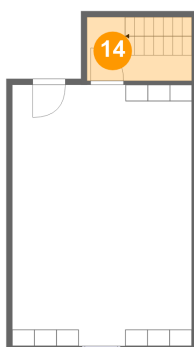
13 Floor 1 - Bedroom



Dimensions: 10'10" x 13'5"
Area: 127 sq. ft
Counted as Living Area:
Yes

Heated: Yes
Finished: Yes
Enclosed: Yes
Contiguous:
Yes
Permitted: Yes
Wet Space: No
Addition: No
Conversion: No

14 Floor 2 - Hall

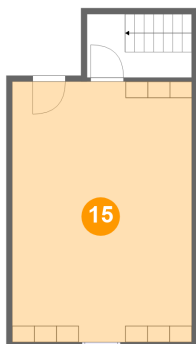


Dimensions: 3'3" x 5'5"
Area: 48 sq. ft
Counted as Living Area:
Yes

Heated: Yes
Finished: Yes
Enclosed: Yes
Contiguous:
Yes
Permitted: Yes
Wet Space: No
Addition: No
Conversion: No

140 Springview Lane Northwest, Huntsville, Madison County, Alabama, United States, 35806

15 Floor 2 - Bonus Room



Dimensions: 15'3" x 22'2"
Area: 339 sq. ft
Counted as Living Area:
Yes

Heated: Yes
Finished: Yes
Enclosed: Yes
Contiguous:
Yes
Permitted: Yes
Wet Space: No
Addition: No
Conversion: No