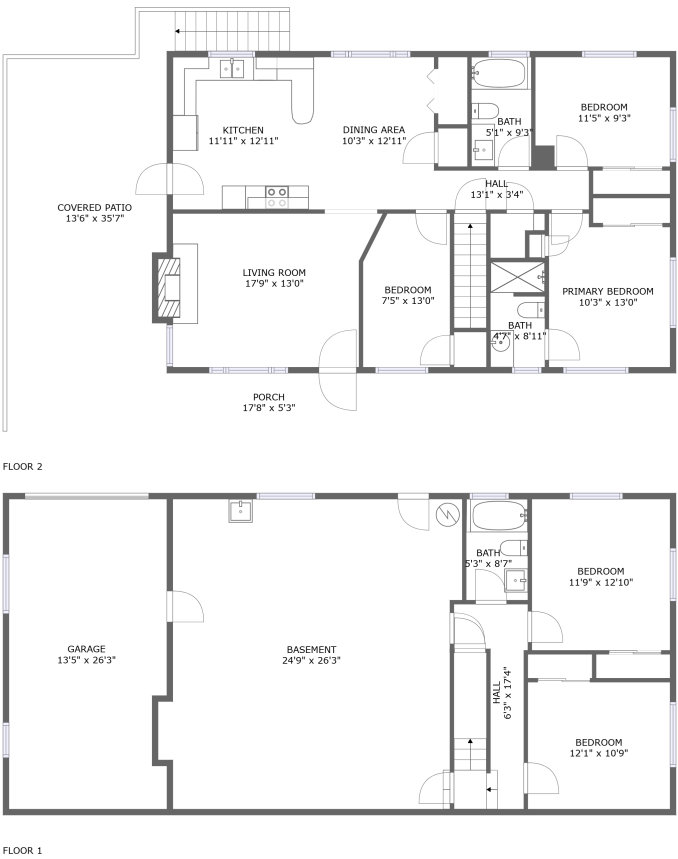


Home report

4463 Nemmo Road, Vinton, Bedford County, Virginia, United States, 24179




Total Area: 1591 sq. ft

Floor 1: 481 sq. ft, Floor 2: 1110 sq. ft

Excluded: Garage 345 sq. ft, Basement 632 sq. ft, Porch 93 sq. ft, Covered patio 465 sq. ft, Fireplace 7 sq. ft, Walls: 164 sq. ft

Property summary

 **2** Floors

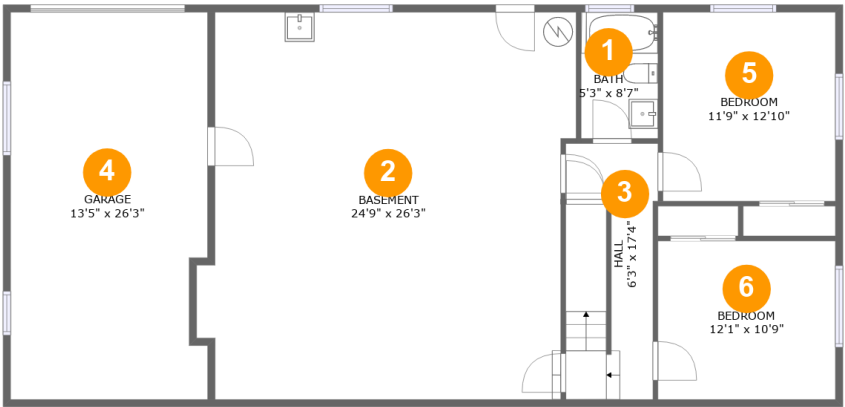
 **5** Bedrooms

 **3** Bathrooms

 **1** Garages

Home report

4463 Nemmo Road, Vinton, Bedford County, Virginia, United States, 24179

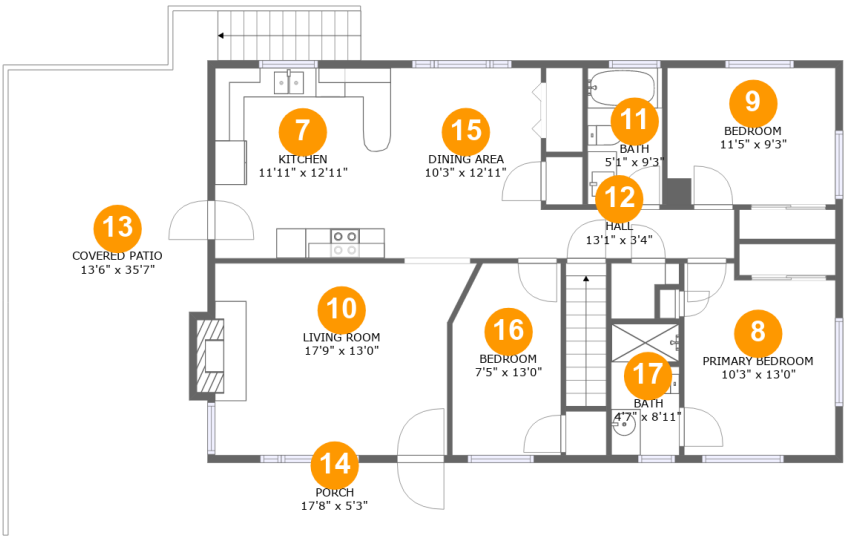


Room dimensions

Floor 1 Total:481sqft Excluded: 977sqft

#		Max Dimensions	sqft	Included
1	Bath	5'3" x 8'7"	45 sq. ft	Yes
2	Basement	24'9" x 26'3"	632 sq. ft	No
3	Hall	6'3" x 17'4"	100 sq. ft	Yes
4	Garage	13'5" x 26'3"	344 sq. ft	No
5	Bedroom	11'9" x 12'10"	150 sq. ft	Yes
6	Bedroom	12'1" x 10'9"	130 sq. ft	Yes

4463 Nemmo Road, Vinton, Bedford County, Virginia, United States, 24179



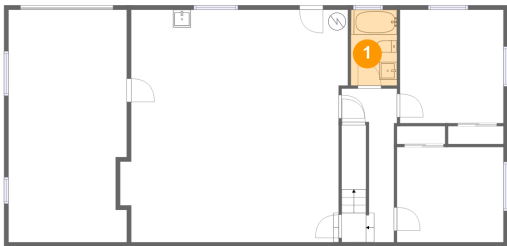
Room dimensions

Floor 2 Total:1110sqft Excluded: 565sqft

#		Max Dimensions	sqft	Included
7	Kitchen	11'11" x 12'11"	154 sq. ft	Yes
8	Primary Bedroom	10'3" x 13'0"	126 sq. ft	Yes
9	Bedroom	11'5" x 9'3"	106 sq. ft	Yes
10	Living Room	17'9" x 13'0"	216 sq. ft	Yes
11	Bath	5'1" x 9'3"	47 sq. ft	Yes
12	Hall	13'1" x 3'4"	43 sq. ft	Yes
13	Covered Patio	13'6" x 35'7"	465 sq. ft	No
14	Porch	17'8" x 5'3"	93 sq. ft	No
15	Dining Area	10'3" x 12'11"	132 sq. ft	Yes
16	Bedroom	7'5" x 13'0"	92 sq. ft	Yes
17	Bath	4'7" x 8'11"	40 sq. ft	Yes

4463 Nemmo Road, Vinton, Bedford County, Virginia, United States, 24179

1 Floor 1 - Bath



Max Dimensions: 5'3" x 8'7"
Calculated Area: 45 sq. ft
Included: Yes

Heated: Yes
Finished: Yes
Enclosed: Yes
Contiguous: Yes
Permitted: Yes
Wet space: Yes
Addition: No
Conversion: No

2 Floor 1 - Basement

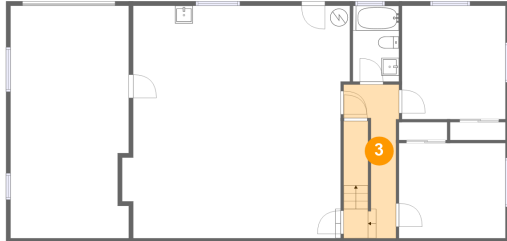


Max Dimensions: 24'9" x 26'3"
Calculated Area: 632 sq. ft
Included: No

Heated: Yes
Finished: No
Enclosed: Yes
Contiguous: Yes
Permitted: Yes
Wet space: No
Addition: No
Conversion: No

4463 Nemmo Road, Vinton, Bedford County, Virginia, United States, 24179

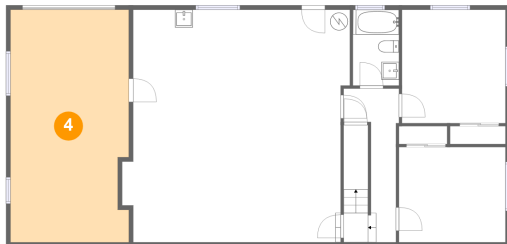
3 Floor 1 - Hall



Max Dimensions: 6'3" x 17'4"
Calculated Area: 100 sq. ft
Included: Yes

Heated: Yes
Finished: Yes
Enclosed: Yes
Contiguous: Yes
Permitted: Yes
Wet space: No
Addition: No
Conversion: No

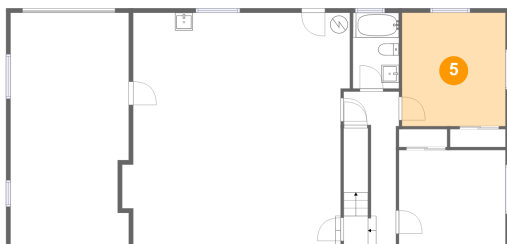
4 Floor 1 - Garage



Max Dimensions: 13'5" x 26'3"
Calculated Area: 344 sq. ft
Included: No

Heated: No
Finished: No
Enclosed: Yes
Contiguous: Yes
Permitted: Yes
Wet space: No
Addition: No
Conversion: No

5 Floor 1 - Bedroom

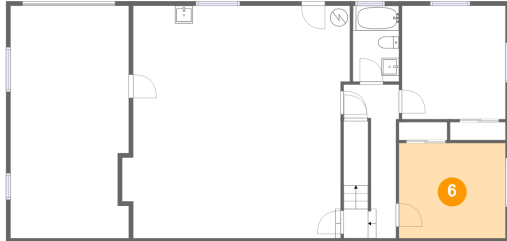


Max Dimensions: 11'9" x 12'10"
Calculated Area: 150 sq. ft
Included: Yes

Heated: Yes
Finished: Yes
Enclosed: Yes
Contiguous: Yes
Permitted: Yes
Wet space: No
Addition: No
Conversion: No

4463 Nemmo Road, Vinton, Bedford County, Virginia, United States, 24179

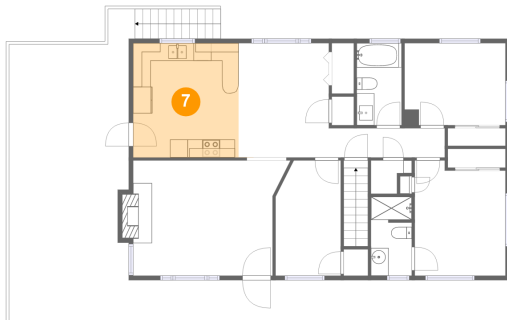
6 Floor 1 - Bedroom



Max Dimensions: 12'1" x 10'9"
Calculated Area: 130 sq. ft
Included: Yes

Heated: Yes
Finished: Yes
Enclosed: Yes
Contiguous: Yes
Permitted: Yes
Wet space: No
Addition: No
Conversion: No

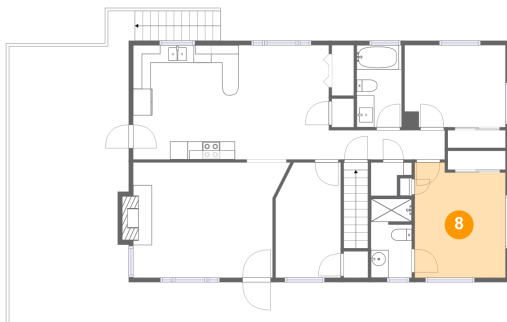
7 Floor 2 - Kitchen



Max Dimensions: 11'11" x 12'11"
Calculated Area: 154 sq. ft
Included: Yes

Heated: Yes
Finished: Yes
Enclosed: Yes
Contiguous: Yes
Permitted: Yes
Wet space: No
Addition: No
Conversion: No

8 Floor 2 - Primary Bedroom



Max Dimensions: 10'3" x 13'0"
Calculated Area: 126 sq. ft
Included: Yes

Heated: Yes
Finished: Yes
Enclosed: Yes
Contiguous: Yes
Permitted: Yes
Wet space: No
Addition: No
Conversion: No

4463 Nemmo Road, Vinton, Bedford County, Virginia, United States, 24179

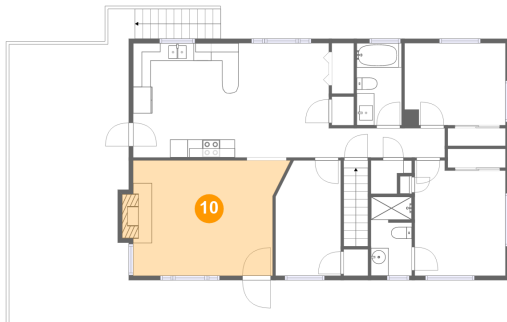
9 Floor 2 - Bedroom



Max Dimensions: 11'5" x 9'3"
Calculated Area: 106 sq. ft
Included: Yes

Heated: Yes
Finished: Yes
Enclosed: Yes
Contiguous: Yes
Permitted: Yes
Wet space: No
Addition: No
Conversion: No

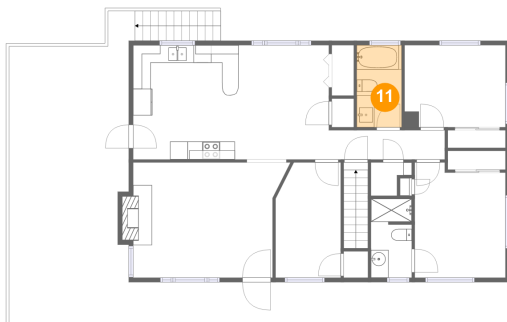
10 Floor 2 - Living Room



Max Dimensions: 17'9" x 13'0"
Calculated Area: 216 sq. ft
Included: Yes

Heated: Yes
Finished: Yes
Enclosed: Yes
Contiguous: Yes
Permitted: Yes
Wet space: No
Addition: No
Conversion: No

11 Floor 2 - Bath

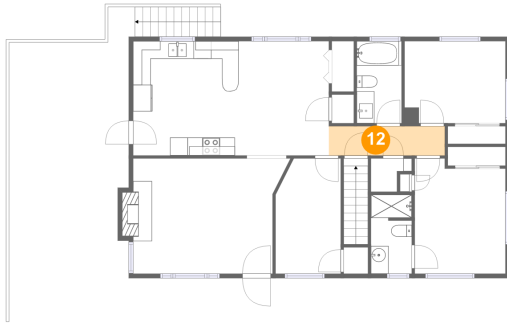


Max Dimensions: 5'1" x 9'3"
Calculated Area: 47 sq. ft
Included: Yes

Heated: Yes
Finished: Yes
Enclosed: Yes
Contiguous: Yes
Permitted: Yes
Wet space: Yes
Addition: No
Conversion: No

4463 Nemmo Road, Vinton, Bedford County, Virginia, United States, 24179

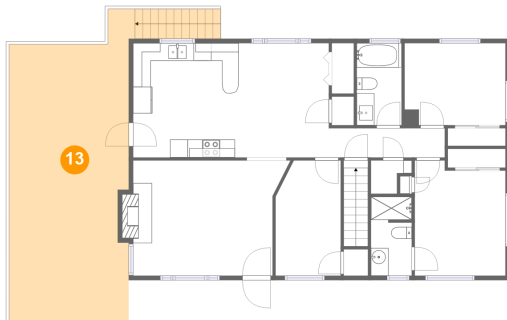
12 Floor 2 - Hall



Max Dimensions: 13'1" x 3'4"
Calculated Area: 43 sq. ft
Included: Yes

Heated: Yes
Finished: Yes
Enclosed: Yes
Contiguous: Yes
Permitted: Yes
Wet space: No
Addition: No
Conversion: No

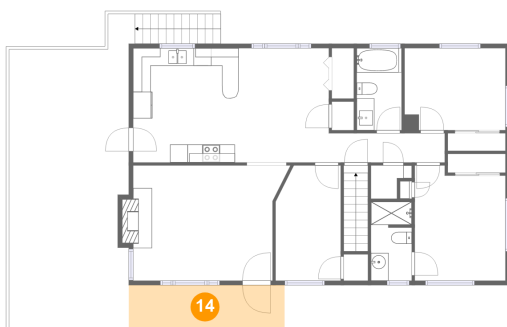
13 Floor 2 - Covered Patio



Max Dimensions: 13'6" x 35'7"
Calculated Area: 465 sq. ft
Included: No

Heated: No
Finished: Yes
Enclosed: No
Contiguous: Yes
Permitted: Yes
Wet space: No
Addition: No
Conversion: No

14 Floor 2 - Porch



Max Dimensions: 17'8" x 5'3"
Calculated Area: 93 sq. ft
Included: No

Heated: No
Finished: Yes
Enclosed: No
Contiguous: Yes
Permitted: Yes
Wet space: No
Addition: No
Conversion: No

4463 Nemmo Road, Vinton, Bedford County, Virginia, United States, 24179

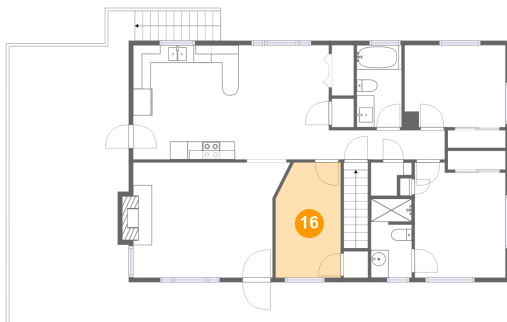
15 Floor 2 - Dining Area



Max Dimensions: 10'3" x 12'11"
Calculated Area: 132 sq. ft
Included: Yes

Heated: Yes
Finished: Yes
Enclosed: Yes
Contiguous: Yes
Permitted: Yes
Wet space: No
Addition: No
Conversion: No

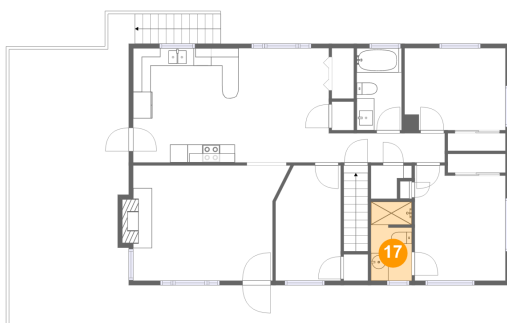
16 Floor 2 - Bedroom



Max Dimensions: 7'5" x 13'0"
Calculated Area: 92 sq. ft
Included: Yes

Heated: Yes
Finished: Yes
Enclosed: Yes
Contiguous: Yes
Permitted: Yes
Wet space: No
Addition: No
Conversion: No

17 Floor 2 - Bath



Max Dimensions: 4'7" x 8'11"
Calculated Area: 40 sq. ft
Included: Yes

Heated: Yes
Finished: Yes
Enclosed: Yes
Contiguous: Yes
Permitted: Yes
Wet space: Yes
Addition: No
Conversion: No