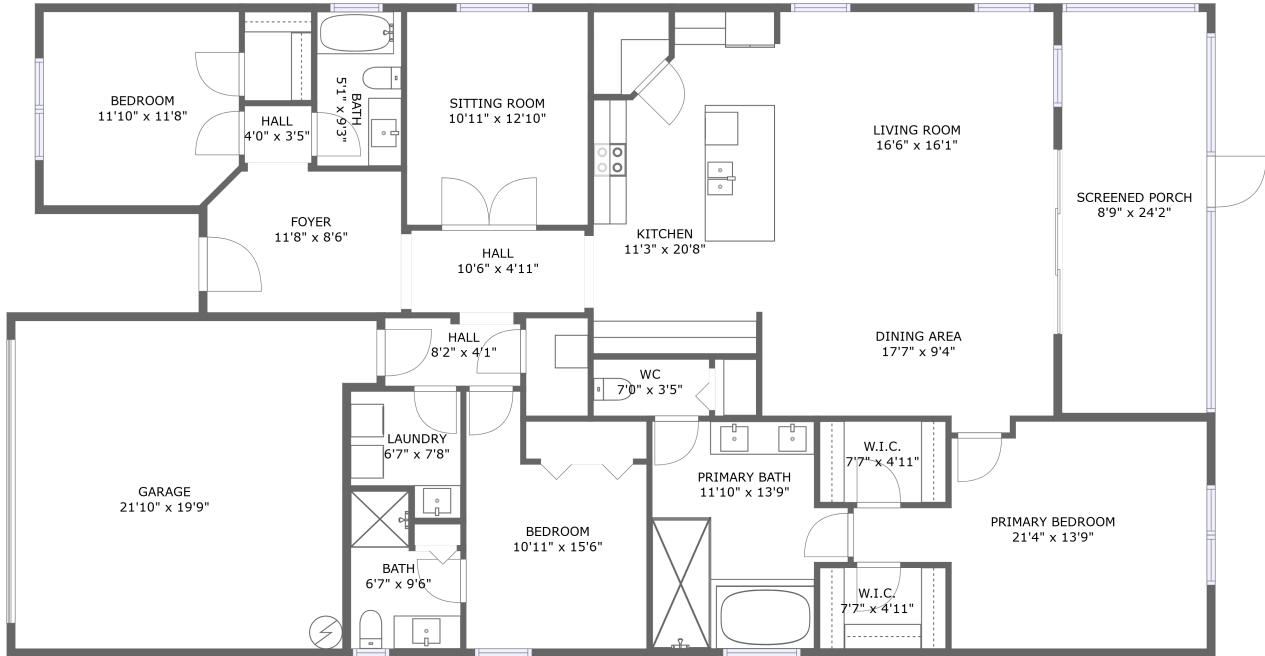






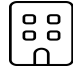


19765 Fishhawk Trail, Venice, Sarasota County, Florida, United States, 34293



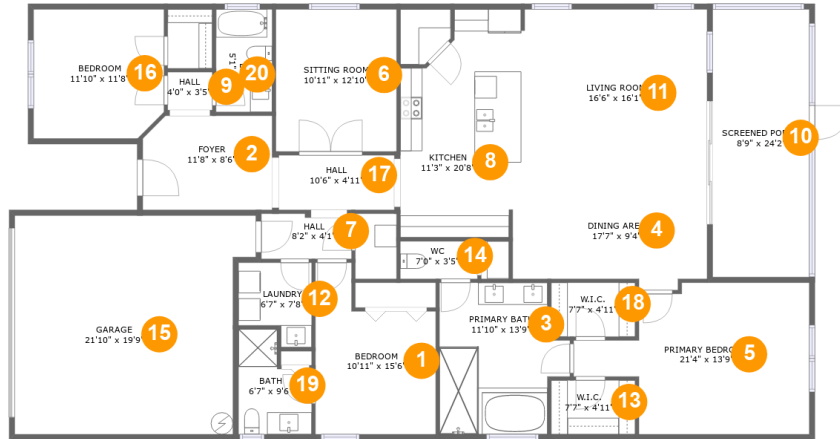
FLOOR 1

Property Summary

 **1** garages  **3** bedrooms  **3** bathrooms  **0** half baths

 **1** floors  **2,129** Gross Living Area sqft  **2,781** total sqft

19765 Fishhawk Trail, Venice, Sarasota County, Florida, United States, 34293



Room Dimensions

Floor 1

Total sqft: 2781

Living area: 2129

#	Room name	Dimensions	Area (sqft)	Counted as Living Area
1	Bedroom	10'11" x 15'6"	135 sq. ft	Yes
2	Foyer	11'8" x 8'6"	98 sq. ft	Yes
3	Primary Bath	11'10" x 13'9"	141 sq. ft	Yes
4	Dining Area	17'7" x 9'4"	147 sq. ft	Yes
5	Primary Bedroom	21'4" x 13'9"	227 sq. ft	Yes
6	Sitting Room	10'11" x 12'10"	140 sq. ft	Yes
7	Hall	8'2" x 4'1"	32 sq. ft	Yes
8	Kitchen	11'3" x 20'8"	205 sq. ft	Yes
9	Hall	4'0" x 3'5"	14 sq. ft	Yes
10	Screened Porch	8'9" x 24'2"	212 sq. ft	No
11	Living Room	16'6" x 16'1"	265 sq. ft	Yes

Scan captured on Wed, 28 Aug 2024 02:06:54 GMT

Information is calculated by CubiCasa technology; deemed highly reliable but not guaranteed.

**19765 Fishhawk Trail, Venice, Sarasota County,
Florida, United States, 34293**

#	Room name	Dimensions	Area (sqft)	Counted as Living Area
12	Laundry	6'7" x 7'8"	43 sq. ft	Yes
13	W.i.c.	7'7" x 4'11"	37 sq. ft	Yes
14	Wc	7'0" x 3'5"	24 sq. ft	Yes
15	Garage	21'10" x 19'9"	398 sq. ft	No
16	Bedroom	11'10" x 11'8"	135 sq. ft	Yes
17	Hall	10'6" x 4'11"	52 sq. ft	Yes
18	W.i.c.	7'7" x 4'11"	37 sq. ft	Yes
19	Bath	6'7" x 9'6"	52 sq. ft	Yes
20	Bath	5'1" x 9'3"	47 sq. ft	Yes

19765 Fishhawk Trail, Venice, Sarasota County, Florida, United States, 34293

1 Floor 1 - Bedroom



Dimensions: 10'11" x 15'6"
Area: 135 sq. ft
Counted as Living Area:
Yes

Heated: Yes
Finished: Yes
Enclosed: Yes
Contiguous:
Yes
Permitted: Yes
Wet Space: No
Addition: No
Conversion: No

2 Floor 1 - Foyer



Dimensions: 11'8" x 8'6"
Area: 98 sq. ft
Counted as Living Area:
Yes

Heated: Yes
Finished: Yes
Enclosed: Yes
Contiguous:
Yes
Permitted: Yes
Wet Space: No
Addition: No
Conversion: No

19765 Fishhawk Trail, Venice, Sarasota County, Florida, United States, 34293

3 Floor 1 - Primary Bath



Dimensions: 11'10" x 13'9"
Area: 141 sq. ft
Counted as Living Area:
Yes

Heated: Yes
Finished: Yes
Enclosed: Yes
Contiguous:
Yes
Permitted: Yes
Wet Space: Yes
Addition: No
Conversion: No

4 Floor 1 - Dining Area



Dimensions: 17'7" x 9'4"
Area: 147 sq. ft
Counted as Living Area:
Yes

Heated: Yes
Finished: Yes
Enclosed: Yes
Contiguous:
Yes
Permitted: Yes
Wet Space: No
Addition: No
Conversion: No

5 Floor 1 - Primary Bedroom

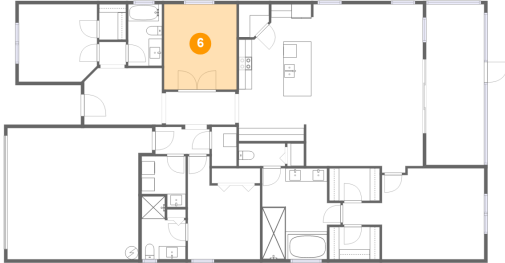


Dimensions: 21'4" x 13'9"
Area: 227 sq. ft
Counted as Living Area:
Yes

Heated: Yes
Finished: Yes
Enclosed: Yes
Contiguous:
Yes
Permitted: Yes
Wet Space: No
Addition: No
Conversion: No

19765 Fishhawk Trail, Venice, Sarasota County, Florida, United States, 34293

6 Floor 1 - Sitting Room



Dimensions: 10'11" x 12'10"
Area: 140 sq. ft
Counted as Living Area:
Yes

Heated: Yes
Finished: Yes
Enclosed: Yes
Contiguous:
Yes
Permitted: Yes
Wet Space: No
Addition: No
Conversion: No

7 Floor 1 - Hall



Dimensions: 8'2" x 4'1"
Area: 32 sq. ft
Counted as Living Area:
Yes

Heated: Yes
Finished: Yes
Enclosed: Yes
Contiguous:
Yes
Permitted: Yes
Wet Space: No
Addition: No
Conversion: No

8 Floor 1 - Kitchen



Dimensions: 11'3" x 20'8"
Area: 205 sq. ft
Counted as Living Area:
Yes

Heated: Yes
Finished: Yes
Enclosed: Yes
Contiguous:
Yes
Permitted: Yes
Wet Space: No
Addition: No
Conversion: No

19765 Fishhawk Trail, Venice, Sarasota County, Florida, United States, 34293

9 Floor 1 - Hall



Dimensions: 4'0" x 3'5"
Area: 14 sq. ft
Counted as Living Area: Yes

Heated: Yes
Finished: Yes
Enclosed: Yes
Contiguous: Yes
Permitted: Yes
Wet Space: No
Addition: No
Conversion: No

10 Floor 1 - Screened Porch



Dimensions: 8'9" x 24'2"
Area: 212 sq. ft
Counted as Living Area: No

Heated: No
Finished: Yes
Enclosed: No
Contiguous: Yes
Permitted: Yes
Wet Space: No
Addition: No
Conversion: No

11 Floor 1 - Living Room



Dimensions: 16'6" x 16'1"
Area: 265 sq. ft
Counted as Living Area: Yes

Heated: Yes
Finished: Yes
Enclosed: Yes
Contiguous: Yes
Permitted: Yes
Wet Space: No
Addition: No
Conversion: No

19765 Fishhawk Trail, Venice, Sarasota County, Florida, United States, 34293

12 Floor 1 - Laundry



Dimensions: 6'7" x 7'8"
Area: 43 sq. ft
Counted as Living Area:
Yes

Heated: Yes
Finished: Yes
Enclosed: Yes
Contiguous:
Yes
Permitted: Yes
Wet Space: No
Addition: No
Conversion: No

13 Floor 1 - W.i.c.



Dimensions: 7'7" x 4'11"
Area: 37 sq. ft
Counted as Living Area:
Yes

Heated: Yes
Finished: Yes
Enclosed: Yes
Contiguous:
Yes
Permitted: Yes
Wet Space: No
Addition: No
Conversion: No

14 Floor 1 - Wc



Dimensions: 7'0" x 3'5"
Area: 24 sq. ft
Counted as Living Area:
Yes

Heated: Yes
Finished: Yes
Enclosed: Yes
Contiguous:
Yes
Permitted: Yes
Wet Space: Yes
Addition: No
Conversion: No

19765 Fishhawk Trail, Venice, Sarasota County, Florida, United States, 34293

15 Floor 1 - Garage



Dimensions: 21'10" x 19'9"
Area: 398 sq. ft
Counted as Living Area: No

Heated: No
Finished: No
Enclosed: Yes
Contiguous: Yes
Permitted: Yes
Wet Space: No
Addition: No
Conversion: No

16 Floor 1 - Bedroom



Dimensions: 11'10" x 11'8"
Area: 135 sq. ft
Counted as Living Area:
Yes

Heated: Yes
Finished: Yes
Enclosed: Yes
Contiguous:
Yes
Permitted: Yes
Wet Space: No
Addition: No
Conversion: No

17 Floor 1 - Hall



Dimensions: 10'6" x 4'11"
Area: 52 sq. ft
Counted as Living Area:
Yes

Heated: Yes
Finished: Yes
Enclosed: Yes
Contiguous:
Yes
Permitted: Yes
Wet Space: No
Addition: No
Conversion: No

19765 Fishhawk Trail, Venice, Sarasota County, Florida, United States, 34293

18 Floor 1 - W.i.c.



Dimensions: 7'7" x 4'11"
Area: 37 sq. ft
Counted as Living Area:
Yes

Heated: Yes
Finished: Yes
Enclosed: Yes
Contiguous:
Yes
Permitted: Yes
Wet Space: No
Addition: No
Conversion: No

19 Floor 1 - Bath



Dimensions: 6'7" x 9'6"
Area: 52 sq. ft
Counted as Living Area:
Yes

Heated: Yes
Finished: Yes
Enclosed: Yes
Contiguous:
Yes
Permitted: Yes
Wet Space: Yes
Addition: No
Conversion: No

20 Floor 1 - Bath



Dimensions: 5'1" x 9'3"
Area: 47 sq. ft
Counted as Living Area:
Yes

Heated: Yes
Finished: Yes
Enclosed: Yes
Contiguous:
Yes
Permitted: Yes
Wet Space: Yes
Addition: No
Conversion: No