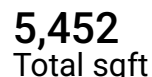
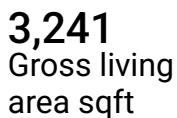
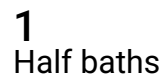
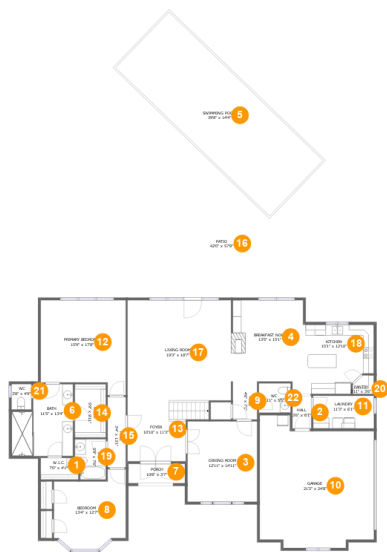


**9912 Woodland Hills Drive, Alliance of Cordova Neighborhoods,
Cordova, Shelby County, Tennessee, United States, 38018**



Home report

9912 Woodland Hills Drive, Alliance of Cordova Neighborhoods,
Cordova, Shelby County, Tennessee, United States, 38018



Room dimensions

Floor 1 Total sqft: 3986 Living area: 2178

#		Dimensions	sqft	Counted as living area
1	W.I.C.	7'0" x 4'1"	26 sq. ft	Yes
2	Hall	3'6" x 6'1"	21 sq. ft	Yes
3	Dining Room	12'11" x 14'11"	193 sq. ft	Yes
4	Breakfast Nook	13'5" x 15'1"	193 sq. ft	Yes
5	Swimming Pool	39'8" x 14'4"	606 sq. ft	No
6	Bath	11'5" x 13'4"	132 sq. ft	Yes
7	Porch	10'6" x 3'7"	38 sq. ft	No
8	Bedroom	13'4" x 12'7"	164 sq. ft	Yes
9	Hall	4'6" x 7'1"	32 sq. ft	Yes
10	Garage	21'2" x 24'8"	461 sq. ft	No
11	Laundry	11'3" x 6'1"	69 sq. ft	Yes

Home report

**9912 Woodland Hills Drive, Alliance of Cordova Neighborhoods,
Cordova, Shelby County, Tennessee, United States, 38018**

#		Dimensions	sqft	Counted as living area
12	Primary Bedroom	15'9" x 17'8"	249 sq. ft	Yes
13	Foyer	10'10" x 11'3"	137 sq. ft	Yes
14	W.I.C.	5'9" x 9'11"	57 sq. ft	Yes
15	Hall	3'4" x 13'1"	44 sq. ft	Yes
16	Patio	42'0" x 57'8"	1889 sq. ft	No
17	Living Room	19'3" x 18'7"	358 sq. ft	Yes
18	Kitchen	15'1" x 12'10"	167 sq. ft	Yes
19	Bath	5'9" x 7'6"	41 sq. ft	Yes
20	Pantry	3'11" x 3'6"	12 sq. ft	Yes
21	WC	3'8" x 4'9"	17 sq. ft	Yes
22	WC	5'11" x 5'5"	32 sq. ft	Yes

Home report

9912 Woodland Hills Drive, Alliance of Cordova Neighborhoods,
Cordova, Shelby County, Tennessee, United States, 38018

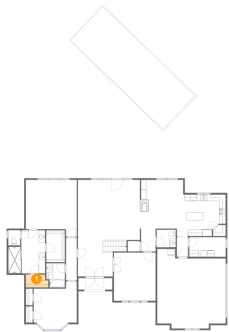


Room dimensions

Floor 2 Total sqft: 1466 Living area: 1063

#		Dimensions	sqft	Counted as living area
23	Bedroom	23'11" x 14'11"	274 sq. ft	Yes
24	W.I.C.	4'2" x 4'10"	20 sq. ft	Yes
25	Hall	9'5" x 9'4"	108 sq. ft	Yes
26	Open To Below	19'1" x 22'1"	381 sq. ft	No
27	Bedroom	11'7" x 23'9"	258 sq. ft	Yes
28	Bath	9'5" x 5'2"	49 sq. ft	Yes
29	Bedroom	14'4" x 11'11"	170 sq. ft	Yes
30	W.I.C.	6'0" x 7'6"	45 sq. ft	Yes

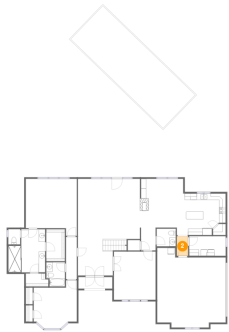
1 Floor 1 - W.I.C.



Dimensions: 7'0" x 4'1"
Area: 26 sq. ft
Counted as living area: Yes

Heated: Yes
Finished: Yes
Enclosed: Yes
Contiguous: Yes
Permitted: Yes
Wet space: No
Addition: No
Conversion: No

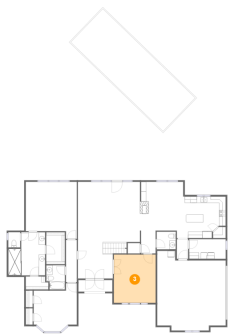
2 Floor 1 - Hall



Dimensions: 3'6" x 6'1"
Area: 21 sq. ft
Counted as living area: Yes

Heated: Yes
Finished: Yes
Enclosed: Yes
Contiguous: Yes
Permitted: Yes
Wet space: No
Addition: No
Conversion: No

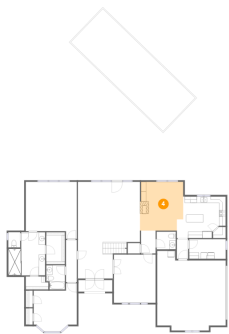
3 Floor 1 - Dining Room



Dimensions: 12'11" x 14'11"
Area: 193 sq. ft
Counted as living area: Yes

Heated: Yes
Finished: Yes
Enclosed: Yes
Contiguous: Yes
Permitted: Yes
Wet space: No
Addition: No
Conversion: No

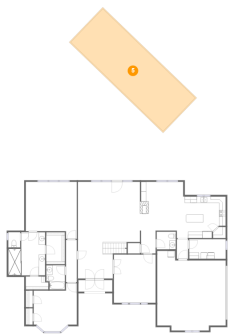
4 Floor 1 - Breakfast Nook



Dimensions: 13'5" x 15'1"
Area: 193 sq. ft
Counted as living area: Yes

Heated: Yes
Finished: Yes
Enclosed: Yes
Contiguous: Yes
Permitted: Yes
Wet space: No
Addition: No
Conversion: No

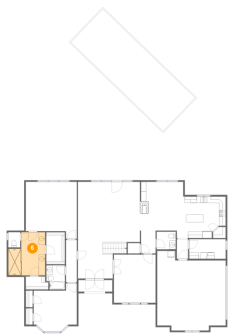
5 Floor 1 - Swimming Pool



Dimensions: 39'8" x 14'4"
Area: 606 sq. ft
Counted as living area: No

Heated: No
Finished: No
Enclosed: No
Contiguous: Yes
Permitted: No
Wet space: No
Addition: No
Conversion: No

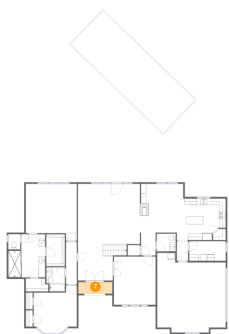
6 Floor 1 - Bath



Dimensions: 11'5" x 13'4"
Area: 132 sq. ft
Counted as living area: Yes

Heated: Yes
Finished: Yes
Enclosed: Yes
Contiguous: Yes
Permitted: Yes
Wet space: Yes
Addition: No
Conversion: No

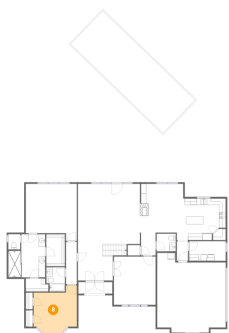
7 Floor 1 - Porch



Dimensions: 10'6" x 3'7"
Area: 38 sq. ft
Counted as living area: No

Heated: No
Finished: Yes
Enclosed: No
Contiguous: Yes
Permitted: Yes
Wet space: No
Addition: No
Conversion: No

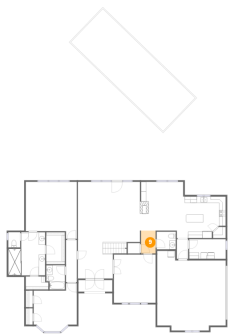
8 Floor 1 - Bedroom



Dimensions: 13'4" x 12'7"
Area: 164 sq. ft
Counted as living area: Yes

Heated: Yes
Finished: Yes
Enclosed: Yes
Contiguous: Yes
Permitted: Yes
Wet space: No
Addition: No
Conversion: No

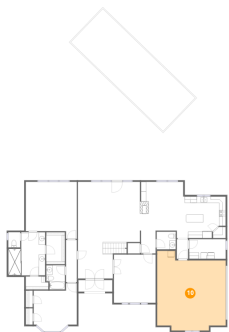
9 Floor 1 - Hall



Dimensions: 4'6" x 7'1"
Area: 32 sq. ft
Counted as living area: Yes

Heated: Yes
Finished: Yes
Enclosed: Yes
Contiguous: Yes
Permitted: Yes
Wet space: No
Addition: No
Conversion: No

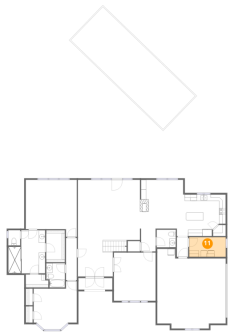
10 Floor 1 - Garage



Dimensions: 21'2" x 24'8"
Area: 461 sq. ft
Counted as living area: No

Heated: No
Finished: No
Enclosed: Yes
Contiguous: Yes
Permitted: Yes
Wet space: No
Addition: No
Conversion: No

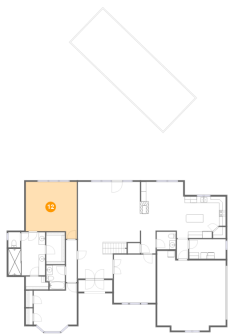
11 Floor 1 - Laundry



Dimensions: 11'3" x 6'1"
Area: 69 sq. ft
Counted as living area: Yes

Heated: Yes
Finished: Yes
Enclosed: Yes
Contiguous: Yes
Permitted: Yes
Wet space: No
Addition: No
Conversion: No

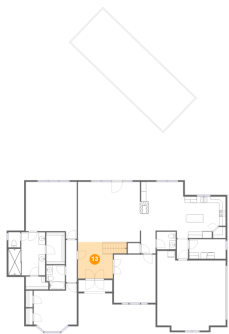
12 Floor 1 - Primary Bedroom



Dimensions: 15'9" x 17'8"
Area: 249 sq. ft
Counted as living area: Yes

Heated: Yes
Finished: Yes
Enclosed: Yes
Contiguous: Yes
Permitted: Yes
Wet space: No
Addition: No
Conversion: No

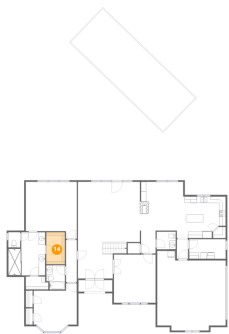
13 Floor 1 - Foyer



Dimensions: 10'10" x 11'3"
Area: 137 sq. ft
Counted as living area: Yes

Heated: Yes
Finished: Yes
Enclosed: Yes
Contiguous: Yes
Permitted: Yes
Wet space: No
Addition: No
Conversion: No

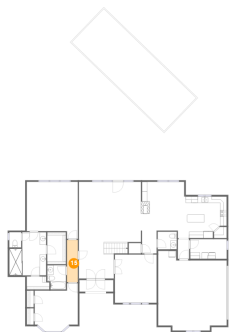
14 Floor 1 - W.I.C.



Dimensions: 5'9" x 9'11"
Area: 57 sq. ft
Counted as living area: Yes

Heated: Yes
Finished: Yes
Enclosed: Yes
Contiguous: Yes
Permitted: Yes
Wet space: No
Addition: No
Conversion: No

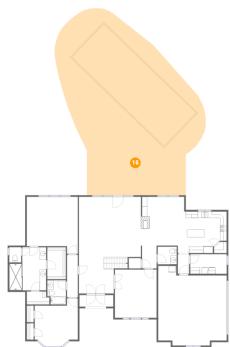
15 Floor 1 - Hall



Dimensions: 3'4" x 13'1"
Area: 44 sq. ft
Counted as living area: Yes

Heated: Yes
Finished: Yes
Enclosed: Yes
Contiguous: Yes
Permitted: Yes
Wet space: No
Addition: No
Conversion: No

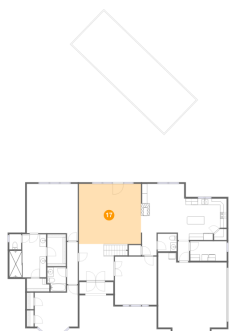
16 Floor 1 - Patio



Dimensions: 42'0" x 57'8"
Area: 1889 sq. ft
Counted as living area: No

Heated: No
Finished: Yes
Enclosed: No
Contiguous: Yes
Permitted: Yes
Wet space: No
Addition: No
Conversion: No

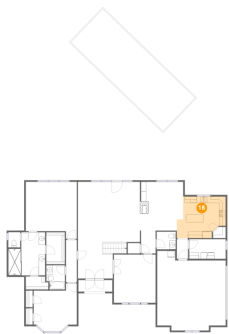
17 Floor 1 - Living Room



Dimensions: 19'3" x 18'7"
Area: 358 sq. ft
Counted as living area: Yes

Heated: Yes
Finished: Yes
Enclosed: Yes
Contiguous: Yes
Permitted: Yes
Wet space: No
Addition: No
Conversion: No

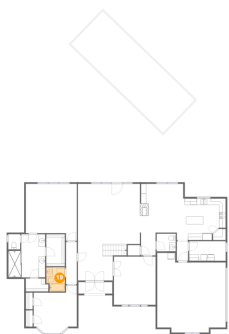
18 Floor 1 - Kitchen



Dimensions: 15'1" x 12'10"
Area: 167 sq. ft
Counted as living area: Yes

Heated: Yes
Finished: Yes
Enclosed: Yes
Contiguous: Yes
Permitted: Yes
Wet space: No
Addition: No
Conversion: No

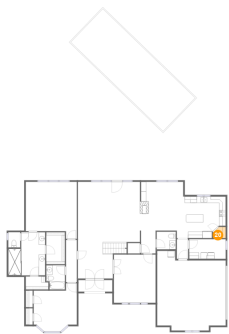
19 Floor 1 - Bath



Dimensions: 5'9" x 7'6"
Area: 41 sq. ft
Counted as living area: Yes

Heated: Yes
Finished: Yes
Enclosed: Yes
Contiguous: Yes
Permitted: Yes
Wet space: Yes
Addition: No
Conversion: No

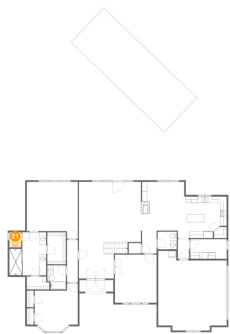
20 Floor 1 - Pantry



Dimensions: 3'11" x 3'6"
Area: 12 sq. ft
Counted as living area: Yes

Heated: Yes
Finished: Yes
Enclosed: Yes
Contiguous: Yes
Permitted: Yes
Wet space: No
Addition: No
Conversion: No

21 Floor 1 - WC



Dimensions: 3'8" x 4'9"
Area: 17 sq. ft
Counted as living area: Yes

Heated: Yes
Finished: Yes
Enclosed: Yes
Contiguous: Yes
Permitted: Yes
Wet space: No
Addition: No
Conversion: No

22 Floor 1 - WC



Dimensions: 5'11" x 5'5"
Area: 32 sq. ft
Counted as living area: Yes

Heated: Yes
Finished: Yes
Enclosed: Yes
Contiguous: Yes
Permitted: Yes
Wet space: Yes
Addition: No
Conversion: No

23 Floor 2 - Bedroom



Dimensions: 23'11" x 14'11"
Area: 274 sq. ft
Counted as living area: Yes

Heated: Yes
Finished: Yes
Enclosed: Yes
Contiguous: Yes
Permitted: Yes
Wet space: No
Addition: No
Conversion: No

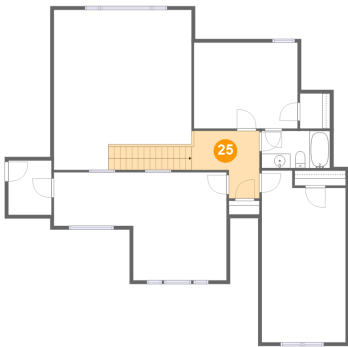
24 Floor 2 - W.I.C.



Dimensions: 4'2" x 4'10"
Area: 20 sq. ft
Counted as living area: Yes

Heated: Yes
Finished: Yes
Enclosed: Yes
Contiguous: Yes
Permitted: Yes
Wet space: No
Addition: No
Conversion: No

25 Floor 2 - Hall



Dimensions: 9'5" x 9'4"
Area: 108 sq. ft
Counted as living area: Yes

Heated: Yes
Finished: Yes
Enclosed: Yes
Contiguous: Yes
Permitted: Yes
Wet space: No
Addition: No
Conversion: No

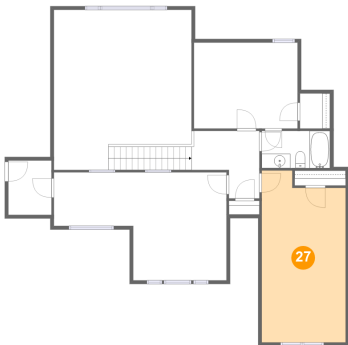
26 Floor 2 - Open To Below



Dimensions: 19'1" x 22'1"
Area: 381 sq. ft
Counted as living area: No

Heated: No
Finished: No
Enclosed: No
Contiguous: Yes
Permitted: No
Wet space: No
Addition: No
Conversion: No

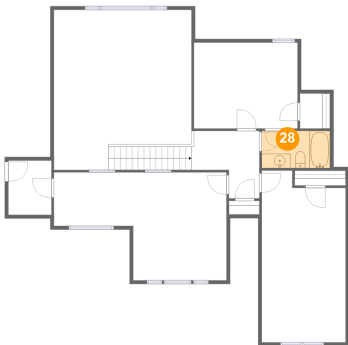
27 Floor 2 - Bedroom



Dimensions: 11'7" x 23'9"
Area: 258 sq. ft
Counted as living area: Yes

Heated: Yes
Finished: Yes
Enclosed: Yes
Contiguous: Yes
Permitted: Yes
Wet space: No
Addition: No
Conversion: No

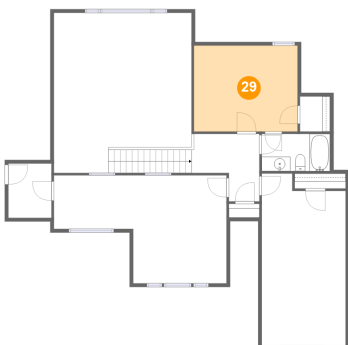
28 Floor 2 - Bath



Dimensions: 9'5" x 5'2"
Area: 49 sq. ft
Counted as living area: Yes

Heated: Yes
Finished: Yes
Enclosed: Yes
Contiguous: Yes
Permitted: Yes
Wet space: Yes
Addition: No
Conversion: No

29 Floor 2 - Bedroom



Dimensions: 14'4" x 11'11"
Area: 170 sq. ft
Counted as living area: Yes

Heated: Yes
Finished: Yes
Enclosed: Yes
Contiguous: Yes
Permitted: Yes
Wet space: No
Addition: No
Conversion: No

9912 Woodland Hills Drive, Alliance of Cordova Neighborhoods,
Cordova, Shelby County, Tennessee, United States, 38018

30 Floor 2 - W.I.C.



Dimensions: 6'0" x 7'6"
Area: 45 sq. ft
Counted as living area: Yes

Heated: Yes
Finished: Yes
Enclosed: Yes
Contiguous: Yes
Permitted: Yes
Wet space: No
Addition: No
Conversion: No