

Home report

6 Branch Turnpike, Concord Heights, Concord, Merrimack County, New Hampshire, United States, 03301




Total Area: 1269 sq. ft

Below Ground: 371 sq. ft, Floor 2: 898 sq. ft

Excluded: Basement 518 sq. ft, Undefined 10 sq. ft, Garage 483 sq. ft, Walls: 158 sq. ft

Property summary

 **2** Floors

 **3** Bedrooms

 **1** Bathrooms

 **1** Garages

6 Branch Turnpike, Concord Heights, Concord, Merrimack County, New Hampshire, United States, 03301



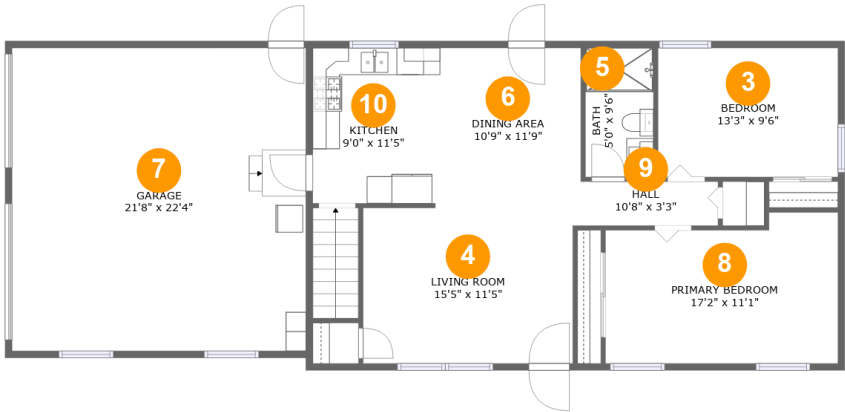
Room dimensions

Floor 1 Below ground Total:371sqft   Excluded: 528sqft

#		Max Dimensions	sqft	Included
1	Bedroom	15'3" x 23'3"	340 sq. ft	Yes
2	Basement	23'1" x 23'3"	518 sq. ft	No

Home report

6 Branch Turnpike, Concord Heights, Concord, Merrimack County, New Hampshire, United States, 03301



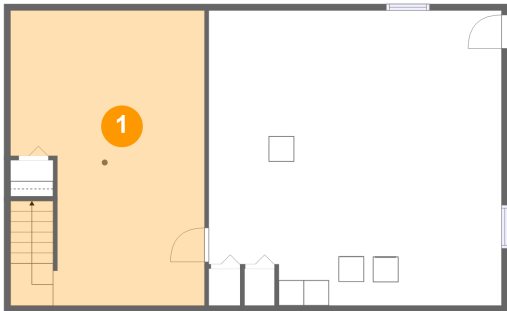
Room dimensions

Floor 2 Total:898sqft   Excluded: 483sqft

#		Max Dimensions	sqft	Included
3	Bedroom	13'3" x 9'6"	126 sq. ft	Yes
4	Living Room	15'5" x 11'5"	177 sq. ft	Yes
5	Bath	5'0" x 9'6"	48 sq. ft	Yes
6	Dining Area	10'9" x 11'9"	125 sq. ft	Yes
7	Garage	21'8" x 22'4"	483 sq. ft	No
8	Primary Bedroom	17'2" x 11'1"	175 sq. ft	Yes
9	Hall	10'8" x 3'3"	35 sq. ft	Yes
10	Kitchen	9'0" x 11'5"	103 sq. ft	Yes

6 Branch Turnpike, Concord Heights, Concord, Merrimack  
County, New Hampshire, United States, 03301

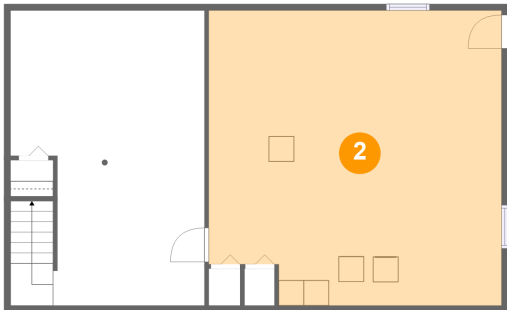
1 Floor 1 - Bedroom



Max Dimensions: 15'3" x 23'3"  
Calculated Area: 340 sq. ft  
Included: Yes

Heated: Yes  
Finished: Yes  
Enclosed: Yes  
Contiguous: Yes  
Permitted: Yes  
Wet space: No  
Addition: No  
Conversion: No

2 Floor 1 - Basement

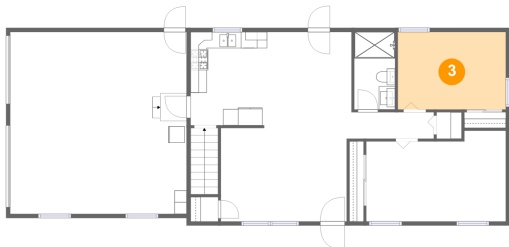


Max Dimensions: 23'1" x 23'3"  
Calculated Area: 518 sq. ft  
Included: No

Heated: Yes  
Finished: No  
Enclosed: Yes  
Contiguous: Yes  
Permitted: Yes  
Wet space: No  
Addition: No  
Conversion: No

6 Branch Turnpike, Concord Heights, Concord, Merrimack  
County, New Hampshire, United States, 03301

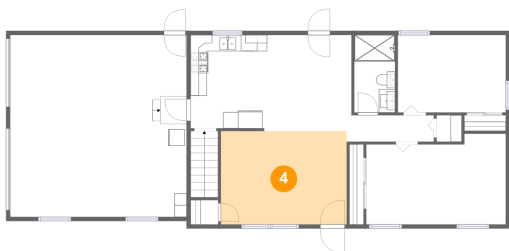
3 Floor 2 - Bedroom



Max Dimensions: 13'3" x 9'6"  
Calculated Area: 126 sq. ft  
Included: Yes

Heated: Yes  
Finished: Yes  
Enclosed: Yes  
Contiguous: Yes  
Permitted: Yes  
Wet space: No  
Addition: No  
Conversion: No

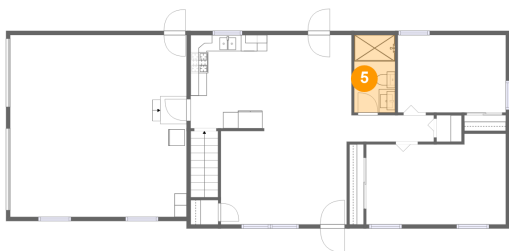
4 Floor 2 - Living Room



Max Dimensions: 15'5" x 11'5"  
Calculated Area: 177 sq. ft  
Included: Yes

Heated: Yes  
Finished: Yes  
Enclosed: Yes  
Contiguous: Yes  
Permitted: Yes  
Wet space: No  
Addition: No  
Conversion: No

5 Floor 2 - Bath

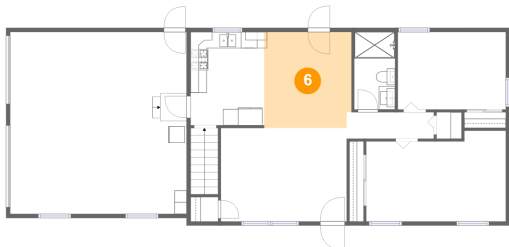


Max Dimensions: 5'0" x 9'6"  
Calculated Area: 48 sq. ft  
Included: Yes

Heated: Yes  
Finished: Yes  
Enclosed: Yes  
Contiguous: Yes  
Permitted: Yes  
Wet space: Yes  
Addition: No  
Conversion: No

6 Branch Turnpike, Concord Heights, Concord, Merrimack County, New Hampshire, United States, 03301

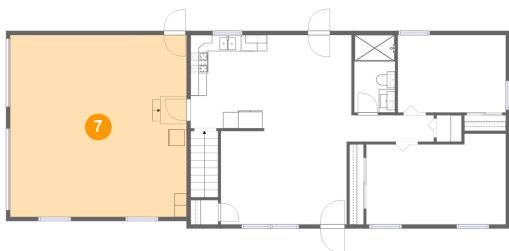
6 Floor 2 - Dining Area



Max Dimensions: 10'9" x 11'9"  
Calculated Area: 125 sq. ft  
Included: Yes

Heated: Yes  
Finished: Yes  
Enclosed: Yes  
Contiguous: Yes  
Permitted: Yes  
Wet space: No  
Addition: No  
Conversion: No

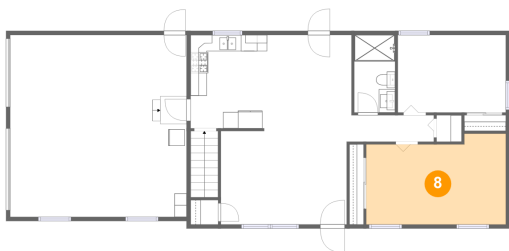
7 Floor 2 - Garage



Max Dimensions: 21'8" x 22'4"  
Calculated Area: 483 sq. ft  
Included: No

Heated: No  
Finished: No  
Enclosed: Yes  
Contiguous: Yes  
Permitted: Yes  
Wet space: No  
Addition: No  
Conversion: No

8 Floor 2 - Primary Bedroom

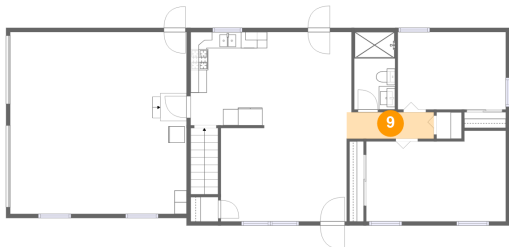


Max Dimensions: 17'2" x 11'1"  
Calculated Area: 175 sq. ft  
Included: Yes

Heated: Yes  
Finished: Yes  
Enclosed: Yes  
Contiguous: Yes  
Permitted: Yes  
Wet space: No  
Addition: No  
Conversion: No

6 Branch Turnpike, Concord Heights, Concord, Merrimack  
County, New Hampshire, United States, 03301

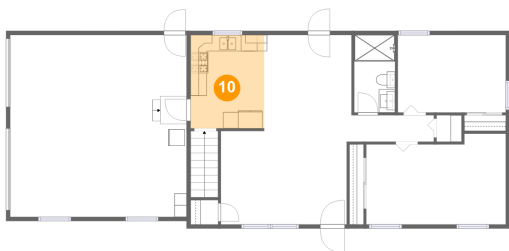
9 Floor 2 - Hall



Max Dimensions: 10'8" x 3'3"  
Calculated Area: 35 sq. ft  
Included: Yes

Heated: Yes  
Finished: Yes  
Enclosed: Yes  
Contiguous: Yes  
Permitted: Yes  
Wet space: No  
Addition: No  
Conversion: No

10 Floor 2 - Kitchen



Max Dimensions: 9'0" x 11'5"  
Calculated Area: 103 sq. ft  
Included: Yes

Heated: Yes  
Finished: Yes  
Enclosed: Yes  
Contiguous: Yes  
Permitted: Yes  
Wet space: No  
Addition: No  
Conversion: No