

FLOOR 1

Total Area: 612 sq. ft

Floor 1: 612 sq. ft

Excluded: Balcony 42 sq. ft, Fireplace 11 sq. ft, Walls: 0 sq. ft

Property summary

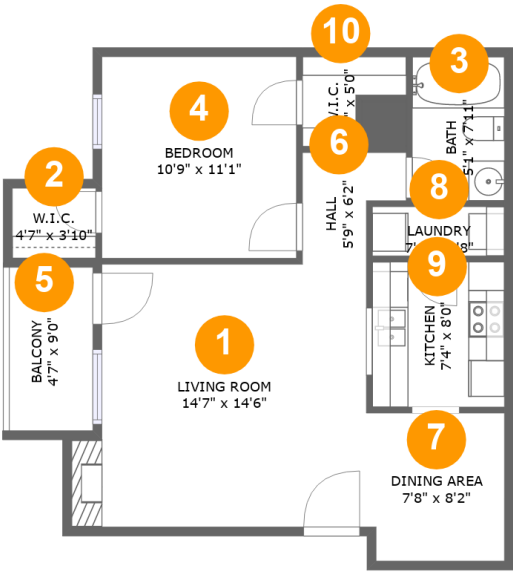
 1 Floors

 1 Bedrooms

 1 Bathrooms

Home report

2501 W Zia Rd 10 205,#10-205,Santa Fe,NM,US, #10-205



Room dimensions

Floor 1 Total:612sqft Excluded: 53sqft

#		Max Dimensions	sqft	Included
1	Living Room	14'7" x 14'6"	220 sq. ft	Yes
2	W.I.C.	4'7" x 3'10"	18 sq. ft	Yes
3	Bath	5'1" x 7'11"	41 sq. ft	Yes
4	Bedroom	10'9" x 11'1"	120 sq. ft	Yes
5	Balcony	4'7" x 9'0"	42 sq. ft	No
6	Hall	5'9" x 6'2"	28 sq. ft	Yes
7	Dining Area	7'8" x 8'2"	61 sq. ft	Yes
8	Laundry	7'4" x 2'8"	20 sq. ft	Yes
9	Kitchen	7'4" x 8'0"	60 sq. ft	Yes
10	W.I.C.	5'9" x 5'0"	21 sq. ft	Yes

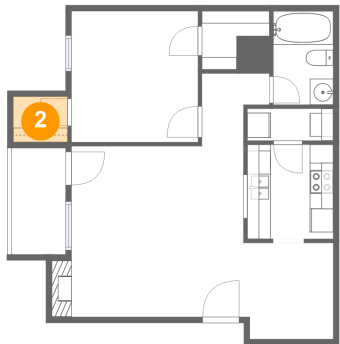
1 Floor 1 - Living Room



Max Dimensions: 14'7" x 14'6"
Calculated Area: 220 sq. ft
Included: Yes

Heated: Yes
Finished: Yes
Enclosed: Yes
Contiguous: Yes
Permitted: Yes
Wet space: No
Addition: No
Conversion: No

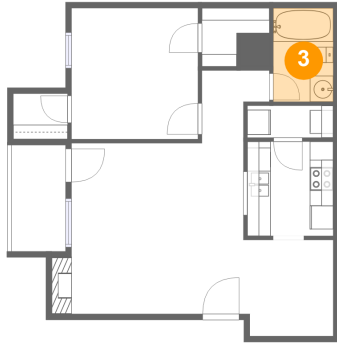
2 Floor 1 - W.I.C.



Max Dimensions: 4'7" x 3'10"
Calculated Area: 18 sq. ft
Included: Yes

Heated: Yes
Finished: Yes
Enclosed: Yes
Contiguous: Yes
Permitted: Yes
Wet space: No
Addition: No
Conversion: No

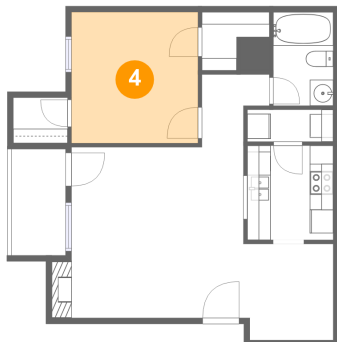
3 Floor 1 - Bath



Max Dimensions: 5'1" x 7'11"
Calculated Area: 41 sq. ft
Included: Yes

Heated: Yes
Finished: Yes
Enclosed: Yes
Contiguous: Yes
Permitted: Yes
Wet space: Yes
Addition: No
Conversion: No

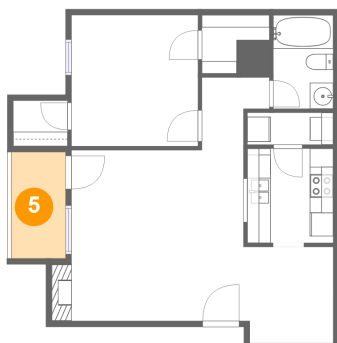
4 Floor 1 - Bedroom



Max Dimensions: 10'9" x 11'1"
Calculated Area: 120 sq. ft
Included: Yes

Heated: Yes
Finished: Yes
Enclosed: Yes
Contiguous: Yes
Permitted: Yes
Wet space: No
Addition: No
Conversion: No

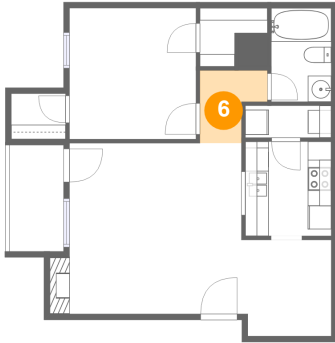
5 Floor 1 - Balcony



Max Dimensions: 4'7" x 9'0"
Calculated Area: 42 sq. ft
Included: No

Heated: No
Finished: Yes
Enclosed: No
Contiguous: Yes
Permitted: Yes
Wet space: No
Addition: No
Conversion: No

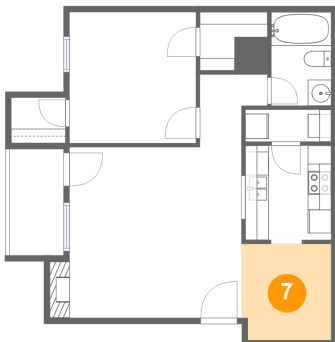
6 Floor 1 - Hall



Max Dimensions: 5'9" x 6'2"
Calculated Area: 28 sq. ft
Included: Yes

Heated: Yes
Finished: Yes
Enclosed: Yes
Contiguous: Yes
Permitted: Yes
Wet space: No
Addition: No
Conversion: No

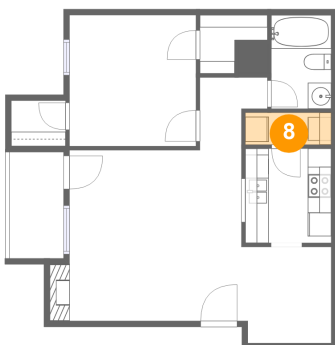
7 Floor 1 - Dining Area



Max Dimensions: 7'8" x 8'2"
Calculated Area: 61 sq. ft
Included: Yes

Heated: Yes
Finished: Yes
Enclosed: Yes
Contiguous: Yes
Permitted: Yes
Wet space: No
Addition: No
Conversion: No

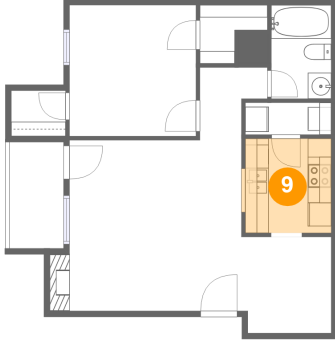
8 Floor 1 - Laundry



Max Dimensions: 7'4" x 2'8"
Calculated Area: 20 sq. ft
Included: Yes

Heated: Yes
Finished: Yes
Enclosed: Yes
Contiguous: Yes
Permitted: Yes
Wet space: No
Addition: No
Conversion: No

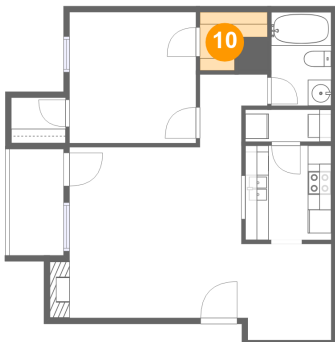
9 Floor 1 - Kitchen



Max Dimensions: 7'4" x 8'0"
Calculated Area: 60 sq. ft
Included: Yes

Heated: Yes
Finished: Yes
Enclosed: Yes
Contiguous: Yes
Permitted: Yes
Wet space: No
Addition: No
Conversion: No

10 Floor 1 - W.I.C.



Max Dimensions: 5'9" x 5'0"
Calculated Area: 21 sq. ft
Included: Yes

Heated: Yes
Finished: Yes
Enclosed: Yes
Contiguous: Yes
Permitted: Yes
Wet space: No
Addition: No
Conversion: No