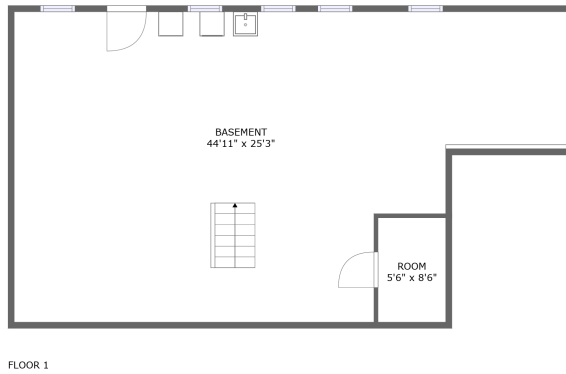
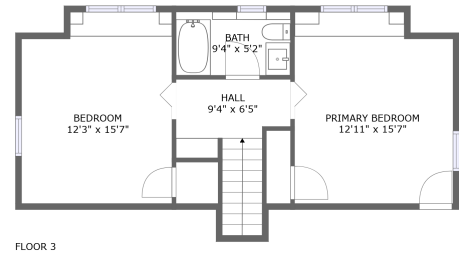
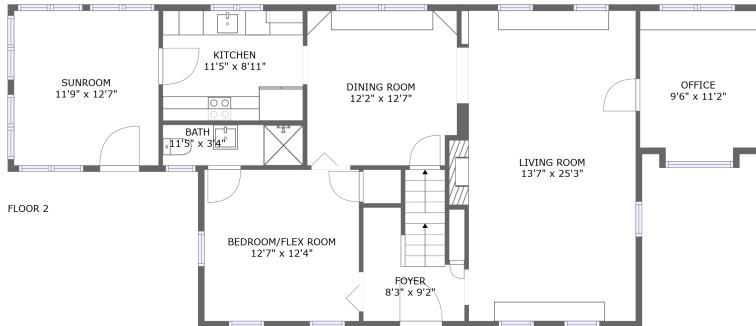


16 Fisher Street, Westborough, Worcester County, Massachusetts, United States, 01581




Property Summary

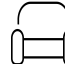
 **0** garages

 **2** bedrooms

 **2** bathrooms

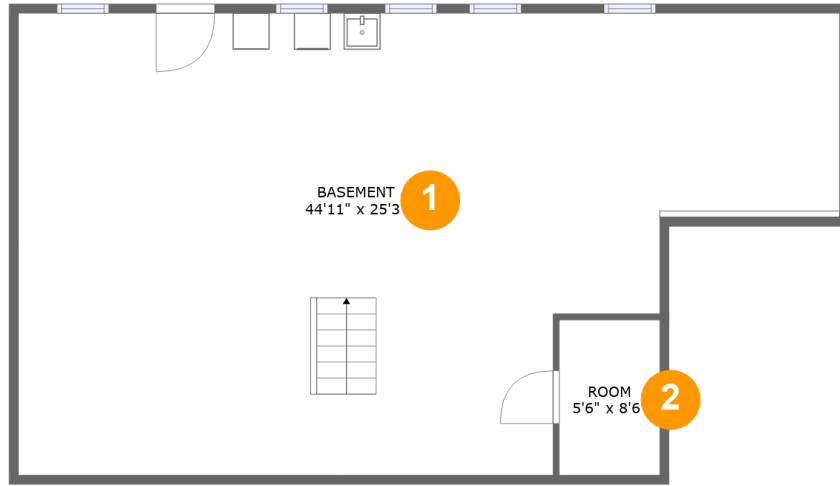
 **0** half baths

 **3** floors

 **1,861** Gross Living Area sqft

 **2,946** total sqft

16 Fisher Street, Westborough, Worcester County, Massachusetts, United States, 01581



Room Dimensions

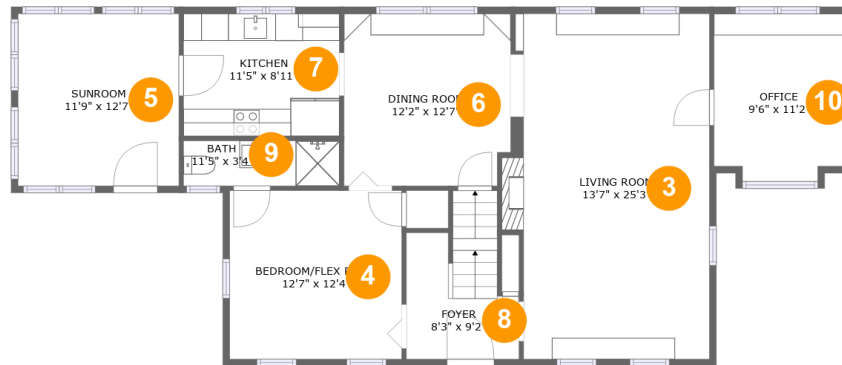
Floor 1

Total sqft: 1068

Living area: 0

#	Room name	Dimensions	Area (sqft)	Counted as Living Area
1	Basement	44'11" x 25'3"	945 sq. ft	No
2	Room	5'6" x 8'6"	47 sq. ft	No

16 Fisher Street, Westborough, Worcester County, Massachusetts, United States, 01581



Room Dimensions

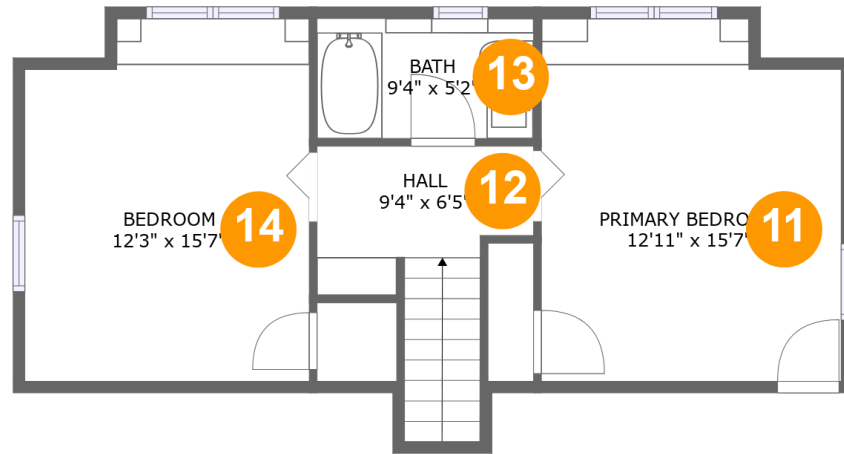
Floor 2

Total sqft: 1285

Living area: 1278

#	Room name	Dimensions	Area (sqft)	Counted as Living Area
3	Living Room	13'7" x 25'3"	354 sq. ft	Yes
4	BEDROOM/FLEX Room	12'7" x 12'4"	155 sq. ft	Yes
5	Sunroom	11'9" x 12'7"	148 sq. ft	Yes
6	Dining Room	12'2" x 12'7"	151 sq. ft	Yes
7	Kitchen	11'5" x 8'11"	102 sq. ft	Yes
8	Foyer	8'3" x 9'2"	78 sq. ft	Yes
9	Bath	11'5" x 3'4"	38 sq. ft	Yes
10	Office	9'6" x 11'2"	106 sq. ft	Yes

16 Fisher Street, Westborough, Worcester County, Massachusetts, United States, 01581



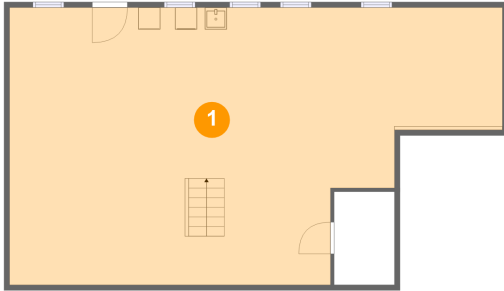
Room Dimensions

Floor 3**Total sqft: 593****Living area: 583**

#	Room name	Dimensions	Area (sqft)	Counted as Living Area
11	Primary Bedroom	12'11" x 15'7"	190 sq. ft	Yes
12	Hall	9'4" x 6'5"	74 sq. ft	Yes
13	Bath	9'4" x 5'2"	48 sq. ft	Yes
14	Bedroom	12'3" x 15'7"	179 sq. ft	Yes

16 Fisher Street, Westborough, Worcester County, Massachusetts, United States, 01581

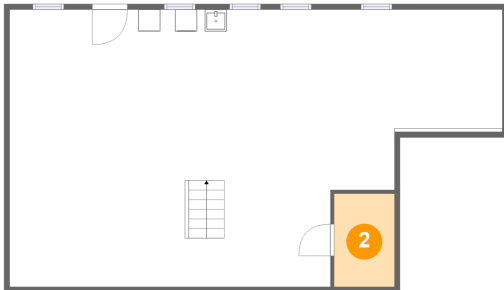
1 Floor 1 - Basement



Dimensions: 44'11" x 25'3"
Area: 945 sq. ft
Counted as Living Area: No

Heated: Yes
Finished: No
Enclosed: Yes
Contiguous: Yes
Permitted: Yes
Wet Space: No
Addition: No
Conversion: No

2 Floor 1 - Room

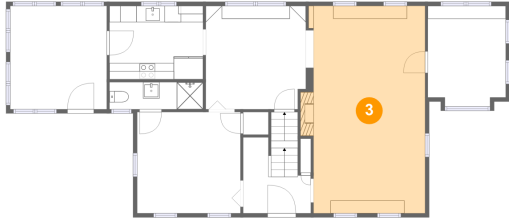


Dimensions: 5'6" x 8'6"
Area: 47 sq. ft
Counted as Living Area: No

Heated: Yes
Finished: No
Enclosed: Yes
Contiguous: Yes
Permitted: Yes
Wet Space: No
Addition: No
Conversion: No

16 Fisher Street, Westborough, Worcester County, Massachusetts, United States, 01581

3 Floor 2 - Living Room



Dimensions: 13'7" x 25'3"
Area: 354 sq. ft
Counted as Living Area:
Yes

Heated: Yes
Finished: Yes
Enclosed: Yes
Contiguous:
Yes
Permitted: Yes
Wet Space: No
Addition: No
Conversion: No

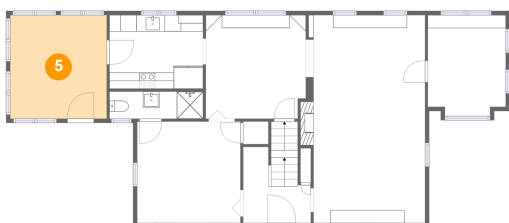
4 Floor 2 - BEDROOM/FLEX Room



Dimensions: 12'7" x 12'4"
Area: 155 sq. ft
Counted as Living Area:
Yes

Heated: Yes
Finished: Yes
Enclosed: Yes
Contiguous:
Yes
Permitted: Yes
Wet Space: No
Addition: No
Conversion: No

5 Floor 2 - Sunroom

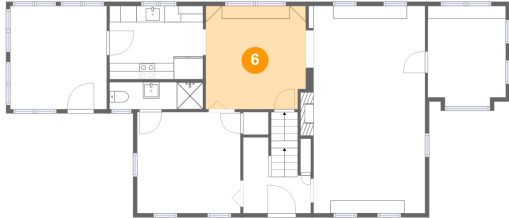


Dimensions: 11'9" x 12'7"
Area: 148 sq. ft
Counted as Living Area:
Yes

Heated: Yes
Finished: Yes
Enclosed: Yes
Contiguous:
Yes
Permitted: Yes
Wet Space: No
Addition: No
Conversion: No

16 Fisher Street, Westborough, Worcester County, Massachusetts, United States, 01581

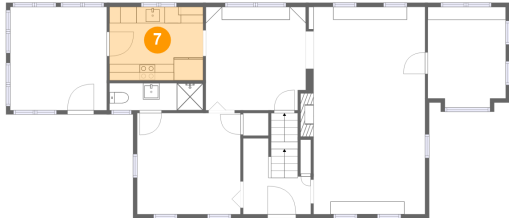
6 Floor 2 - Dining Room



Dimensions: 12'2" x 12'7"
Area: 151 sq. ft
Counted as Living Area:
Yes

Heated: Yes
Finished: Yes
Enclosed: Yes
Contiguous:
Yes
Permitted: Yes
Wet Space: No
Addition: No
Conversion: No

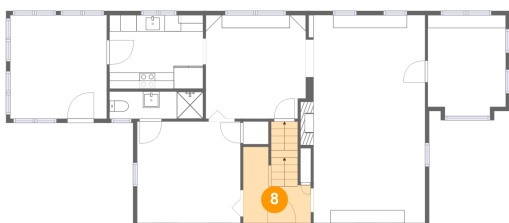
7 Floor 2 - Kitchen



Dimensions: 11'5" x 8'11"
Area: 102 sq. ft
Counted as Living Area:
Yes

Heated: Yes
Finished: Yes
Enclosed: Yes
Contiguous:
Yes
Permitted: Yes
Wet Space: No
Addition: No
Conversion: No

8 Floor 2 - Foyer

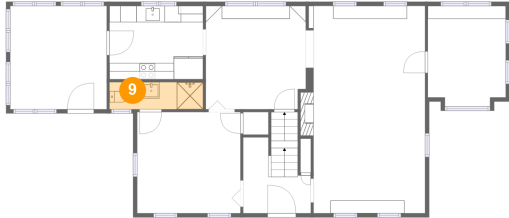


Dimensions: 8'3" x 9'2"
Area: 78 sq. ft
Counted as Living Area:
Yes

Heated: Yes
Finished: Yes
Enclosed: Yes
Contiguous:
Yes
Permitted: Yes
Wet Space: No
Addition: No
Conversion: No

16 Fisher Street, Westborough, Worcester County, Massachusetts, United States, 01581

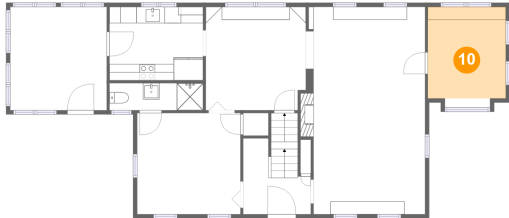
9 Floor 2 - Bath



Dimensions: 11'5" x 3'4"
Area: 38 sq. ft
Counted as Living Area:
Yes

Heated: Yes
Finished: Yes
Enclosed: Yes
Contiguous:
Yes
Permitted: Yes
Wet Space: Yes
Addition: No
Conversion: No

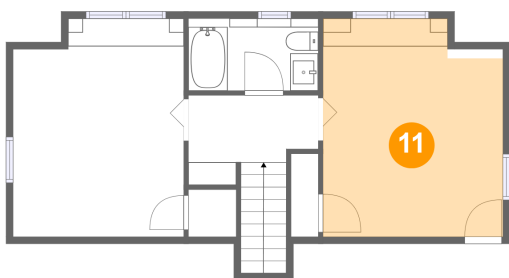
10 Floor 2 - Office



Dimensions: 9'6" x 11'2"
Area: 106 sq. ft
Counted as Living Area:
Yes

Heated: Yes
Finished: Yes
Enclosed: Yes
Contiguous:
Yes
Permitted: Yes
Wet Space: No
Addition: No
Conversion: No

11 Floor 3 - Primary Bedroom

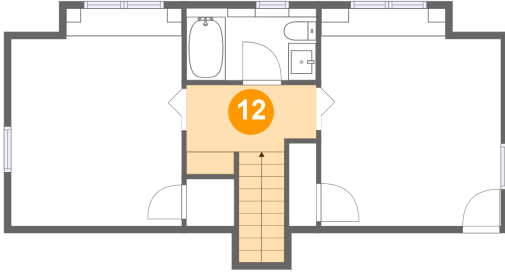


Dimensions: 12'11" x 15'7"
Area: 190 sq. ft
Counted as Living Area:
Yes

Heated: Yes
Finished: Yes
Enclosed: Yes
Contiguous:
Yes
Permitted: Yes
Wet Space: No
Addition: No
Conversion: No

16 Fisher Street, Westborough, Worcester County, Massachusetts, United States, 01581

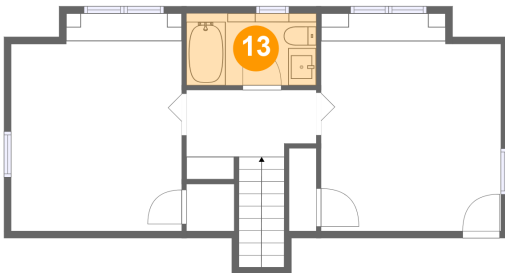
12 Floor 3 - Hall



Dimensions: 9'4" x 6'5"
Area: 74 sq. ft
Counted as Living Area:
Yes

Heated: Yes
Finished: Yes
Enclosed: Yes
Contiguous:
Yes
Permitted: Yes
Wet Space: No
Addition: No
Conversion: No

13 Floor 3 - Bath



Dimensions: 9'4" x 5'2"
Area: 48 sq. ft
Counted as Living Area:
Yes

Heated: Yes
Finished: Yes
Enclosed: Yes
Contiguous:
Yes
Permitted: Yes
Wet Space: Yes
Addition: No
Conversion: No

14 Floor 3 - Bedroom



Dimensions: 12'3" x 15'7"
Area: 179 sq. ft
Counted as Living Area:
Yes

Heated: Yes
Finished: Yes
Enclosed: Yes
Contiguous:
Yes
Permitted: Yes
Wet Space: No
Addition: No
Conversion: No