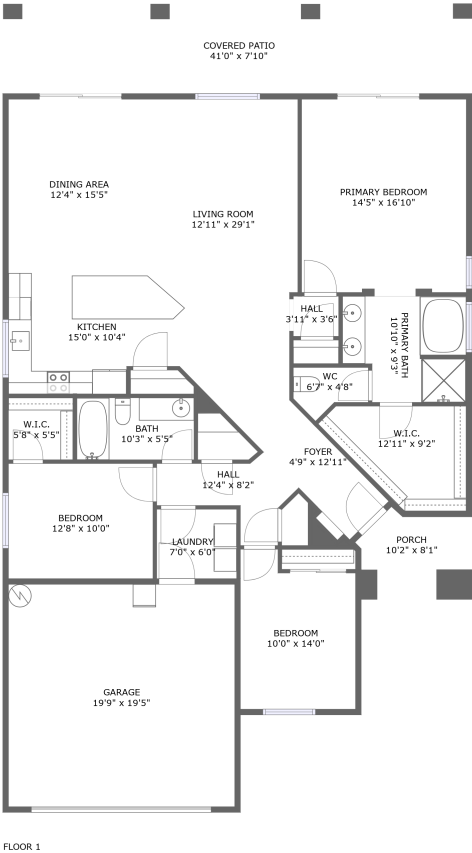


Home report

4469 South Luciano Avenue, Pahrump, Nye County, Nevada,  
United States, 89061



Total Area: 1737 sq. ft

Floor 1: 1737 sq. ft

Excluded: Garage 385 sq. ft, Porch 70 sq. ft, Covered patio 323 sq. ft, Walls: 118 sq. ft

Property summary

1 Floors

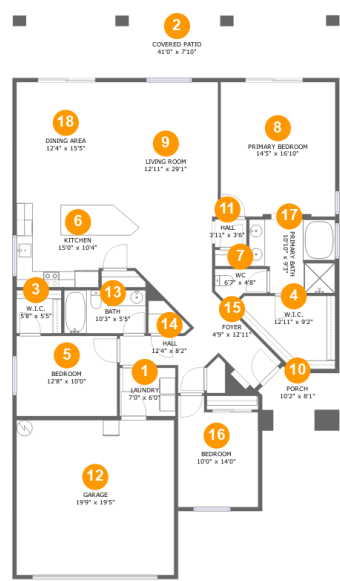
3 Bedrooms

2 Bathrooms

1 Garages

Home report

4469 South Luciano Avenue, Pahrump, Nye County, Nevada,  
United States, 89061



Room dimensions

Floor 1 Total:1737sqft Excluded: 778sqft

#		Max Dimensions	sqft	Included
1	Laundry	7'0" x 6'0"	42 sq. ft	Yes
2	Covered Patio	41'0" x 7'10"	323 sq. ft	No
3	W.I.C.	5'8" x 5'5"	31 sq. ft	Yes
4	W.I.C.	12'11" x 9'2"	89 sq. ft	Yes
5	Bedroom	12'8" x 10'0"	127 sq. ft	Yes
6	Kitchen	15'0" x 10'4"	144 sq. ft	Yes
7	WC	6'7" x 4'8"	23 sq. ft	Yes
8	Primary Bedroom	14'5" x 16'10"	241 sq. ft	Yes
9	Living Room	12'11" x 29'1"	310 sq. ft	Yes
10	Porch	10'2" x 8'1"	70 sq. ft	No
11	Hall	3'11" x 3'6"	14 sq. ft	Yes

Home report

**4469 South Luciano Avenue, Pahrump, Nye County, Nevada,  
United States, 89061**

#		Max Dimensions	sqft	Included
12	Garage	19'9" x 19'5"	385 sq. ft	No
13	Bath	10'3" x 5'5"	55 sq. ft	Yes
14	Hall	12'4" x 8'2"	56 sq. ft	Yes
15	Foyer	4'9" x 12'11"	62 sq. ft	Yes
16	Bedroom	10'0" x 14'0"	127 sq. ft	Yes
17	Primary Bath	10'10" x 9'3"	90 sq. ft	Yes
18	Dining Area	12'4" x 15'5"	191 sq. ft	Yes

4469 South Luciano Avenue, Pahrump, Nye County, Nevada,  
United States, 89061

1 Floor 1 - Laundry



Max Dimensions: 7'0" x 6'0"  
Calculated Area: 42 sq. ft  
Included: Yes

Heated: Yes  
Finished: Yes  
Enclosed: Yes  
Contiguous: Yes  
Permitted: Yes  
Wet space: No  
Addition: No  
Conversion: No

2 Floor 1 - Covered Patio



Max Dimensions: 41'0" x 7'10"  
Calculated Area: 323 sq. ft  
Included: No

Heated: No  
Finished: Yes  
Enclosed: No  
Contiguous: Yes  
Permitted: Yes  
Wet space: No  
Addition: No  
Conversion: No

4469 South Luciano Avenue, Pahrump, Nye County, Nevada,  
United States, 89061

3 Floor 1 - W.I.C.



Max Dimensions: 5'8" x 5'5"  
Calculated Area: 31 sq. ft  
Included: Yes

Heated: Yes  
Finished: Yes  
Enclosed: Yes  
Contiguous: Yes  
Permitted: Yes  
Wet space: No  
Addition: No  
Conversion: No

4 Floor 1 - W.I.C.



Max Dimensions: 12'11" x 9'2"  
Calculated Area: 89 sq. ft  
Included: Yes

Heated: Yes  
Finished: Yes  
Enclosed: Yes  
Contiguous: Yes  
Permitted: Yes  
Wet space: No  
Addition: No  
Conversion: No

5 Floor 1 - Bedroom



Max Dimensions: 12'8" x 10'0"  
Calculated Area: 127 sq. ft  
Included: Yes

Heated: Yes  
Finished: Yes  
Enclosed: Yes  
Contiguous: Yes  
Permitted: Yes  
Wet space: No  
Addition: No  
Conversion: No

4469 South Luciano Avenue, Pahrump, Nye County, Nevada,  
United States, 89061

6 Floor 1 - Kitchen



Max Dimensions: 15'0" x 10'4"  
Calculated Area: 144 sq. ft  
Included: Yes

Heated: Yes  
Finished: Yes  
Enclosed: Yes  
Contiguous: Yes  
Permitted: Yes  
Wet space: No  
Addition: No  
Conversion: No

7 Floor 1 - WC



Max Dimensions: 6'7" x 4'8"  
Calculated Area: 23 sq. ft  
Included: Yes

Heated: Yes  
Finished: Yes  
Enclosed: Yes  
Contiguous: Yes  
Permitted: Yes  
Wet space: No  
Addition: No  
Conversion: No

8 Floor 1 - Primary Bedroom

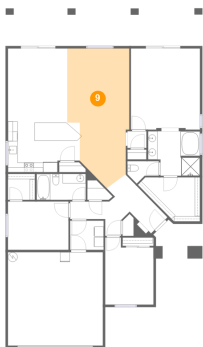


Max Dimensions: 14'5" x 16'10"  
Calculated Area: 241 sq. ft  
Included: Yes

Heated: Yes  
Finished: Yes  
Enclosed: Yes  
Contiguous: Yes  
Permitted: Yes  
Wet space: No  
Addition: No  
Conversion: No

4469 South Luciano Avenue, Pahrump, Nye County, Nevada,  
United States, 89061

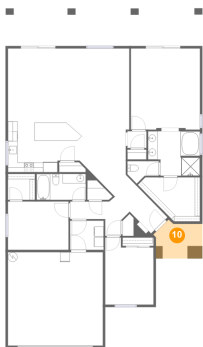
9 Floor 1 - Living Room



Max Dimensions: 12'11" x 29'1"  
Calculated Area: 310 sq. ft  
Included: Yes

Heated: Yes  
Finished: Yes  
Enclosed: Yes  
Contiguous: Yes  
Permitted: Yes  
Wet space: No  
Addition: No  
Conversion: No

10 Floor 1 - Porch



Max Dimensions: 10'2" x 8'1"  
Calculated Area: 70 sq. ft  
Included: No

Heated: No  
Finished: Yes  
Enclosed: No  
Contiguous: Yes  
Permitted: Yes  
Wet space: No  
Addition: No  
Conversion: No

11 Floor 1 - Hall

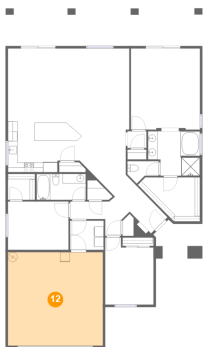


Max Dimensions: 3'11" x 3'6"  
Calculated Area: 14 sq. ft  
Included: Yes

Heated: Yes  
Finished: Yes  
Enclosed: Yes  
Contiguous: Yes  
Permitted: Yes  
Wet space: No  
Addition: No  
Conversion: No

4469 South Luciano Avenue, Pahrump, Nye County, Nevada,  
United States, 89061

12 Floor 1 - Garage



Max Dimensions: 19'9" x 19'5"  
Calculated Area: 385 sq. ft  
Included: No

Heated: No  
Finished: No  
Enclosed: Yes  
Contiguous: Yes  
Permitted: Yes  
Wet space: No  
Addition: No  
Conversion: No

13 Floor 1 - Bath



Max Dimensions: 10'3" x 5'5"  
Calculated Area: 55 sq. ft  
Included: Yes

Heated: Yes  
Finished: Yes  
Enclosed: Yes  
Contiguous: Yes  
Permitted: Yes  
Wet space: Yes  
Addition: No  
Conversion: No

14 Floor 1 - Hall



Max Dimensions: 12'4" x 8'2"  
Calculated Area: 56 sq. ft  
Included: Yes

Heated: Yes  
Finished: Yes  
Enclosed: Yes  
Contiguous: Yes  
Permitted: Yes  
Wet space: No  
Addition: No  
Conversion: No



4469 South Luciano Avenue, Pahrump, Nye County, Nevada,  
United States, 89061

15 Floor 1 - Foyer



Max Dimensions: 4'9" x 12'11"  
Calculated Area: 62 sq. ft  
Included: Yes

Heated: Yes  
Finished: Yes  
Enclosed: Yes  
Contiguous: Yes  
Permitted: Yes  
Wet space: No  
Addition: No  
Conversion: No

16 Floor 1 - Bedroom



Max Dimensions: 10'0" x 14'0"  
Calculated Area: 127 sq. ft  
Included: Yes

Heated: Yes  
Finished: Yes  
Enclosed: Yes  
Contiguous: Yes  
Permitted: Yes  
Wet space: No  
Addition: No  
Conversion: No

17 Floor 1 - Primary Bath



Max Dimensions: 10'10" x 9'3"  
Calculated Area: 90 sq. ft  
Included: Yes

Heated: Yes  
Finished: Yes  
Enclosed: Yes  
Contiguous: Yes  
Permitted: Yes  
Wet space: Yes  
Addition: No  
Conversion: No

4469 South Luciano Avenue, Pahrump, Nye County, Nevada,  
United States, 89061

**18** Floor 1 - Dining Area



Max Dimensions: 12'4" x 15'5"  
Calculated Area: 191 sq. ft  
Included: Yes

Heated: Yes  
Finished: Yes  
Enclosed: Yes  
Contiguous: Yes  
Permitted: Yes  
Wet space: No  
Addition: No  
Conversion: No