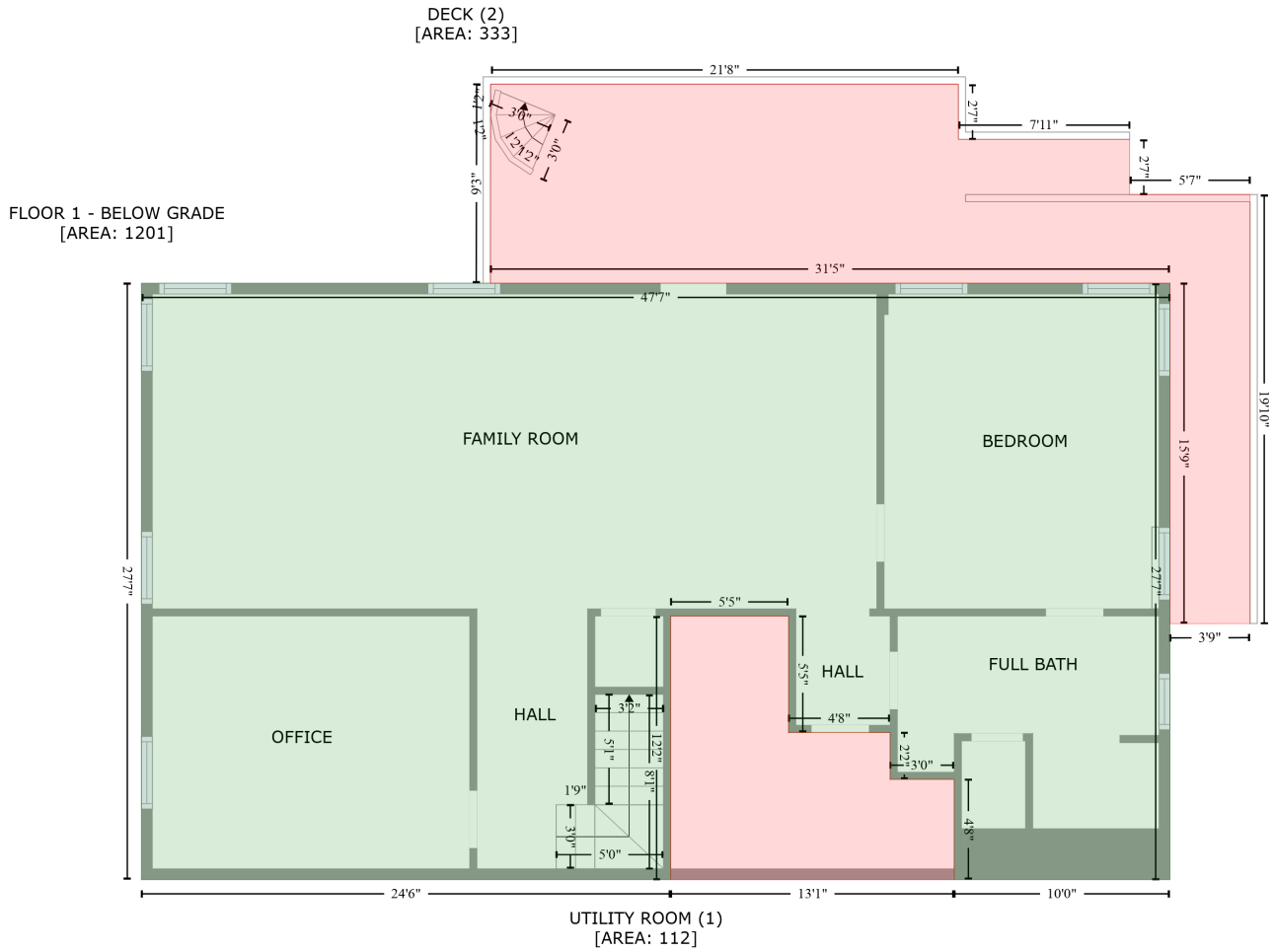


# 109 Cardiff Place, Chapel Hill, Orange County, North Carolina, United States, 27516

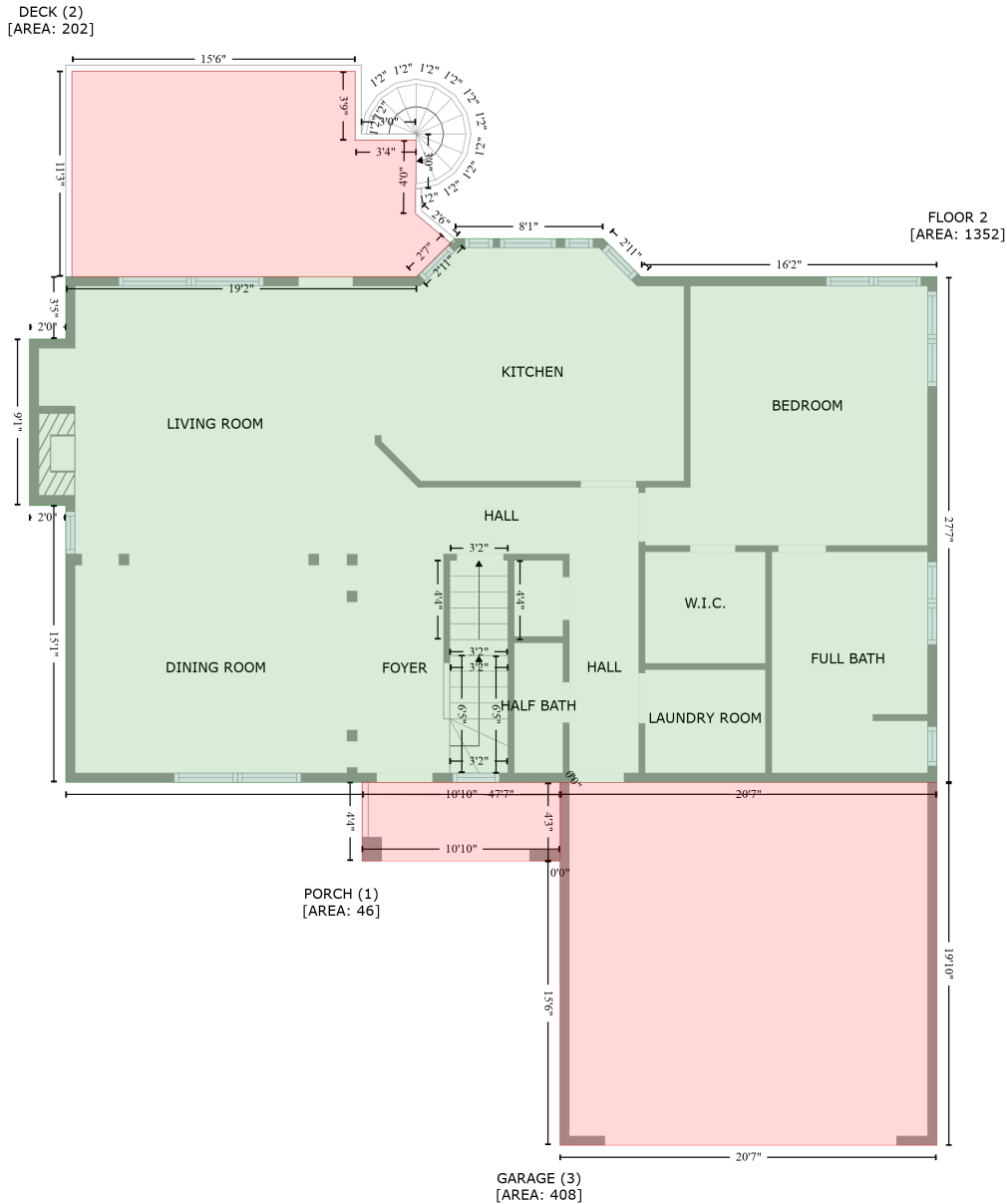
Gross Living Area: 3547 sq. ft



Space	Area (sq. ft)	Calculation
FLOOR 1 - BELOW GRADE (Living area)	1201	Coordinate Polygon Area Algorithm using inches $-((635.9 + 635.9) * (178.3 - 509.4) + (635.9 + 516.2) * (509.4 - 509.4) + (516.2 + 516.2) * (509.4 - 453.8) + (516.2 + 480.6) * (453.8 - 453.8) + (480.6 + 480.6) * (453.8 - 427.7) + (480.6 + 424.2) * (427.7 - 427.7) + (424.2 + 424.2) * (427.7 - 363.1) + (424.2 + 358.8) * (363.1 - 363.1) + (358.8 + 358.8) * (363.1 - 509.4) + (358.8 + 64.9) * (509.4 - 509.4) + (64.9 + 64.9) * (509.4 - 178.3) + (64.9 + 635.9) * (178.3 - 178.3)) * 0.5 * 0.00694$
UTILITY ROOM (Non-living area)	112	$-((424.2 + 424.2) * (363.1 - 427.7) + (424.2 + 480.6) * (427.7 - 427.7) + (480.6 + 480.6) * (427.7 - 453.8) + (480.6 + 516.2) * (453.8 - 453.8) + (516.2 + 516.2) * (453.8 - 509.4) + (516.2 + 358.8) * (509.4 - 509.4) + (358.8 + 358.8) * (509.4 - 363.1) + (358.8 + 424.2) * (363.1 - 363.1)) * 0.5 * 0.00694$
DECK (Non-living area)	333	$-((518.5 + 518.5) * (67.7 - 98.4) + (518.5 + 613.6) * (98.4 - 98.4) + (613.6 + 613.6) * (98.4 - 129) + (613.6 + 680.5) * (129 - 129) + (680.5 + 680.5) * (129 - 367.2) + (680.5 + 635.9) * (367.2 - 367.3) + (635.9 + 635.9) * (367.3 - 178.3) + (635.9 + 258.6) * (178.3 - 178.3) + (258.6 + 258.9) * (178.3 - 67.7) + (258.9 + 518.5) * (67.7 - 67.7)) * 0.5 * 0.00694$

# 109 Cardiff Place, Chapel Hill, Orange County, North Carolina, United States, 27516

Gross Living Area: 3547 sq. ft



Space	Area (sq. ft)	Calculation <small>Coordinate Polygon Area Algorithm using inches</small>
FLOOR 2 (Living area)	1352	$-((417.1 + 441.9) * (140.2 - 165.3) + (441.9 + 635.9) * (165.3 - 165.3) + (635.9 + 635.9) * (165.3 - 496.4) + (635.9 + 64.9) * (496.4 - 496.4) + (64.9 + 64.9) * (496.4 - 315) + (64.9 + 41) * (315 - 315) + (41 + 41) * (315 - 206) + (41 + 64.9) * (206 - 206) + (64.9 + 64.9) * (206 - 165.3) + (64.9 + 294.8) * (165.3 - 165.3) + (294.8 + 317.2) * (165.3 - 143.3) + (317.2 + 316.9) * (143.3 - 142.9) + (316.9 + 319.8) * (142.9 - 140.2) + (319.8 + 417.1) * (140.2 - 140.2)) * 0.5 * 0.00694$
PORCH	46	$-((259.1 + 389) * (496.4 - 496.6) + (389 + 389) * (496.6 - 548) + (389 + 259.1) * (548 - 548) +$

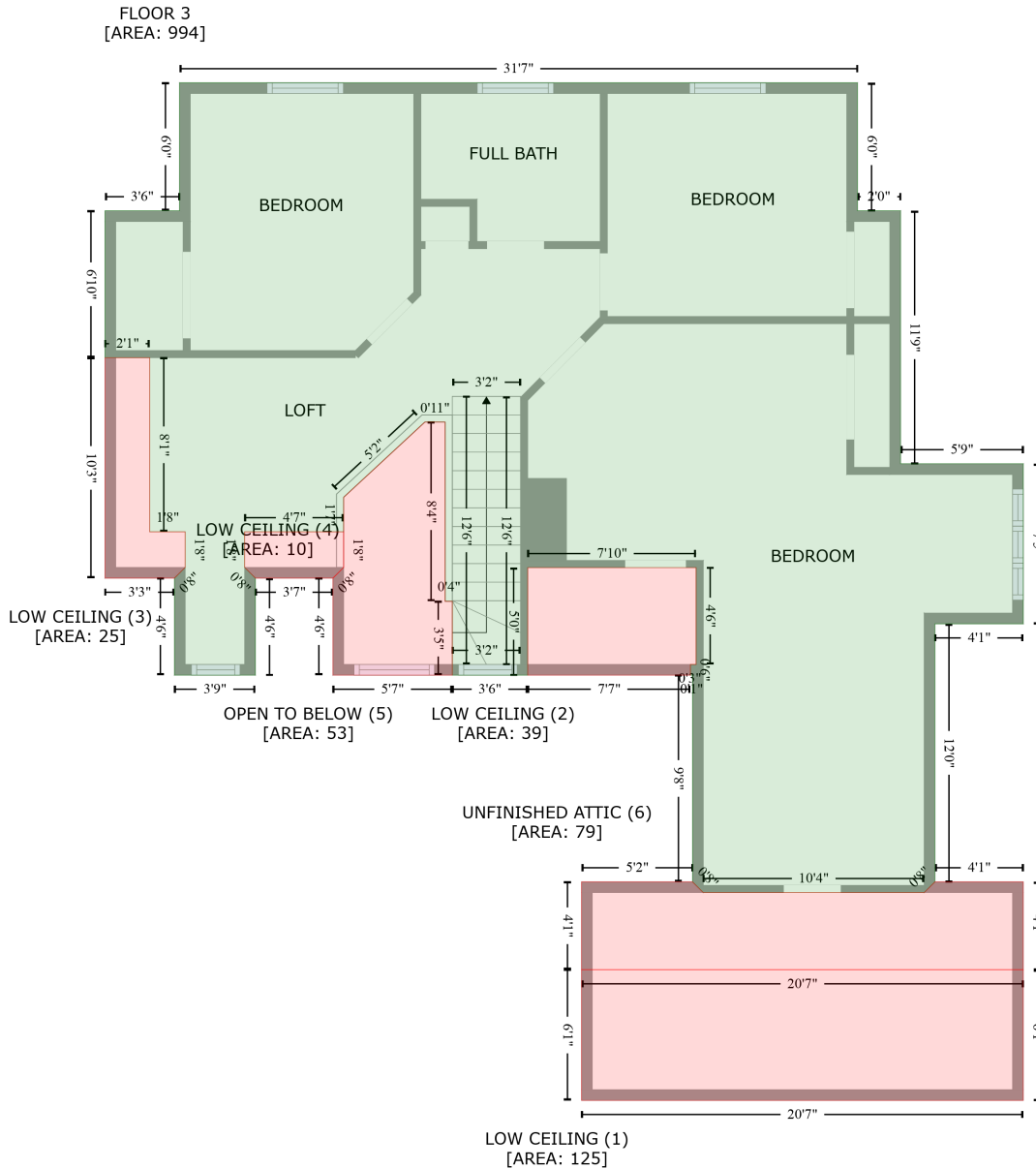
# 109 Cardiff Place, Chapel Hill, Orange County, North Carolina, United States, 27516

Gross Living Area: 3547 sq. ft

Space	Area (sq. ft)	Calculation <small>Coordinate Polygon Area Algorithm using inches</small>
(Non-living area)		$(259.1 + 259.1) * (548 - 496.4) * 0.5 * 0.00694$
DECK (Non-living area)	202	$-((254.6 + 254.6) * (30.6 - 75.8) + (254.6 + 294.6) * (75.8 - 75.7) + (294.6 + 294.1) * (75.7 - 123.9) + (294.1 + 317.2) * (123.9 - 143.3) + (317.2 + 294.8) * (143.3 - 165.3) + (294.8 + 68.9) * (165.3 - 165.3) + (68.9 + 68.9) * (165.3 - 30.6) + (68.9 + 254.6) * (30.6 - 30.6)) * 0.5 * 0.00694$
GARAGE (Non-living area)	408	$-((635.9 + 635.9) * (496.4 - 734.1) + (635.9 + 388.9) * (734.1 - 734.1) + (388.9 + 388.9) * (734.1 - 548) + (388.9 + 389) * (548 - 548) + (389 + 389) * (548 - 496.6) + (389 + 388.9) * (496.6 - 496.4) + (388.9 + 635.9) * (496.4 - 496.4)) * 0.5 * 0.00694$

# 109 Cardiff Place, Chapel Hill, Orange County, North Carolina, United States, 27516

Gross Living Area: 3547 sq. ft



Space	Area (sq. ft)	Calculation
FLOOR 3 (Living area)	994	Coordinate Polygon Area Algorithm using inches $-((543.2 + 543.2) * (165.3 - 236.8) + (543.2 + 567.3) * (236.8 - 236.8) + (567.3 + 567.3) * (236.8 - 378.2) + (567.3 + 635.9) * (378.2 - 378.2) + (635.9 + 635.9) * (378.2 - 467.7) + (635.9 + 586.5) * (467.7 - 467.7) + (586.5 + 586.5) * (467.7 - 611.9) + (586.5 + 580.5) * (611.9 - 617.9) + (580.5 + 457) * (617.9 - 617.9) + (457 + 451) * (617.9 - 611.9) + (451 + 451) * (611.9 - 496.4) + (451 + 449.8) * (496.4 - 496.4) + (449.8 + 449.8) * (496.4 - 490.4) + (449.8 + 453) * (490.4 - 490.4) + (453 + 453) * (490.4 - 436.3) + (453 + 358.8) * (436.3 - 436.3) + (358.8 + 358.8) * (436.3 - 496.4) + (358.8 + 316.6) * (496.4 - 496.4) + (316.6 + 316.6) * (496.4 - 455.1) + (316.6 + 312.6) * (455.1 -$

# 109 Cardiff Place, Chapel Hill, Orange County, North Carolina, United States, 27516

Gross Living Area: 3547 sq. ft

Space	Area (sq. ft)	Calculation <small>Coordinate Polygon Area Algorithm using inches</small>
		$455.1 + (312.6 + 312.6) * (455.1 - 354.9) + (312.6 + 301.2) * (354.9 - 354.9) + (301.2 + 255.8) * (354.9 - 397) + (255.8 + 255.8) * (397 - 416.3) + (255.8 + 200.5) * (416.3 - 416.3) + (200.5 + 200.5) * (416.3 - 436.2) + (200.5 + 206.5) * (436.2 - 442.2) + (206.5 + 206.5) * (442.2 - 496.4) + (206.5 + 161.2) * (496.4 - 496.4) + (161.2 + 161.2) * (496.4 - 442.2) + (161.2 + 167.2) * (442.2 - 436.2) + (167.2 + 167.2) * (436.2 - 416.3) + (167.2 + 147.4) * (416.3 - 416.3) + (147.4 + 147.4) * (416.3 - 319) + (147.4 + 122.4) * (319 - 319) + (122.4 + 122.4) * (319 - 236.8) + (122.4 + 164.1) * (236.8 - 236.8) + (164.1 + 164.1) * (236.8 - 165.3) + (164.1 + 543.2) * (165.3 - 165.3) * 0.5 * 0.00694$
LOW CEILING (Non-living area)	125	$-((635.9 + 635.9) * (661 - 734.1) + (635.9 + 388.9) * (734.1 - 734.1) + (388.9 + 388.9) * (734.1 - 661) + (388.9 + 635.9) * (661 - 661)) * 0.5 * 0.00694$
LOW CEILING (Non-living area)	39	$-((453 + 453) * (436.3 - 490.4) + (453 + 449.8) * (490.4 - 490.4) + (449.8 + 449.8) * (490.4 - 496.4) + (449.8 + 358.8) * (496.4 - 496.4) + (358.8 + 358.8) * (496.4 - 436.3) + (358.8 + 453) * (436.3 - 436.3)) * 0.5 * 0.00694$
LOW CEILING (Non-living area)	25	$-((147.4 + 147.4) * (319 - 416.3) + (147.4 + 167.2) * (416.3 - 416.3) + (167.2 + 167.2) * (416.3 - 436.2) + (167.2 + 161.2) * (436.2 - 442.2) + (161.2 + 122.4) * (442.2 - 442.2) + (122.4 + 122.4) * (442.2 - 319) + (122.4 + 147.4) * (319 - 319)) * 0.5 * 0.00694$
LOW CEILING (Non-living area)	10	$-((255.8 + 255.8) * (416.3 - 436.2) + (255.8 + 249.8) * (436.2 - 442.2) + (249.8 + 206.5) * (442.2 - 442.2) + (206.5 + 200.5) * (442.2 - 436.2) + (200.5 + 200.5) * (436.2 - 416.3) + (200.5 + 255.8) * (416.3 - 416.3)) * 0.5 * 0.00694$
OPEN TO BELOW (Non-living area)	53	$-((312.6 + 312.6) * (354.9 - 455.1) + (312.6 + 316.6) * (455.1 - 455.1) + (316.6 + 316.6) * (455.1 - 496.4) + (316.6 + 249.8) * (496.4 - 496.4) + (249.8 + 249.8) * (496.4 - 442.2) + (249.8 + 255.8) * (442.2 - 436.2) + (255.8 + 255.8) * (436.2 - 397) + (255.8 + 301.2) * (397 - 354.9) + (301.2 + 312.6) * (354.9 - 354.9)) * 0.5 * 0.00694$
UNFINISHED ATTIC (Non-living area)	79	$-((451 + 457) * (611.9 - 617.9) + (457 + 580.5) * (617.9 - 617.9) + (580.5 + 586.5) * (617.9 - 611.9) + (586.5 + 635.9) * (611.9 - 611.9) + (635.9 + 635.9) * (611.9 - 661) + (635.9 + 388.9) * (661 - 661) + (388.9 + 388.9) * (661 - 611.9) + (388.9 + 451) * (611.9 - 611.9)) * 0.5 * 0.00694$