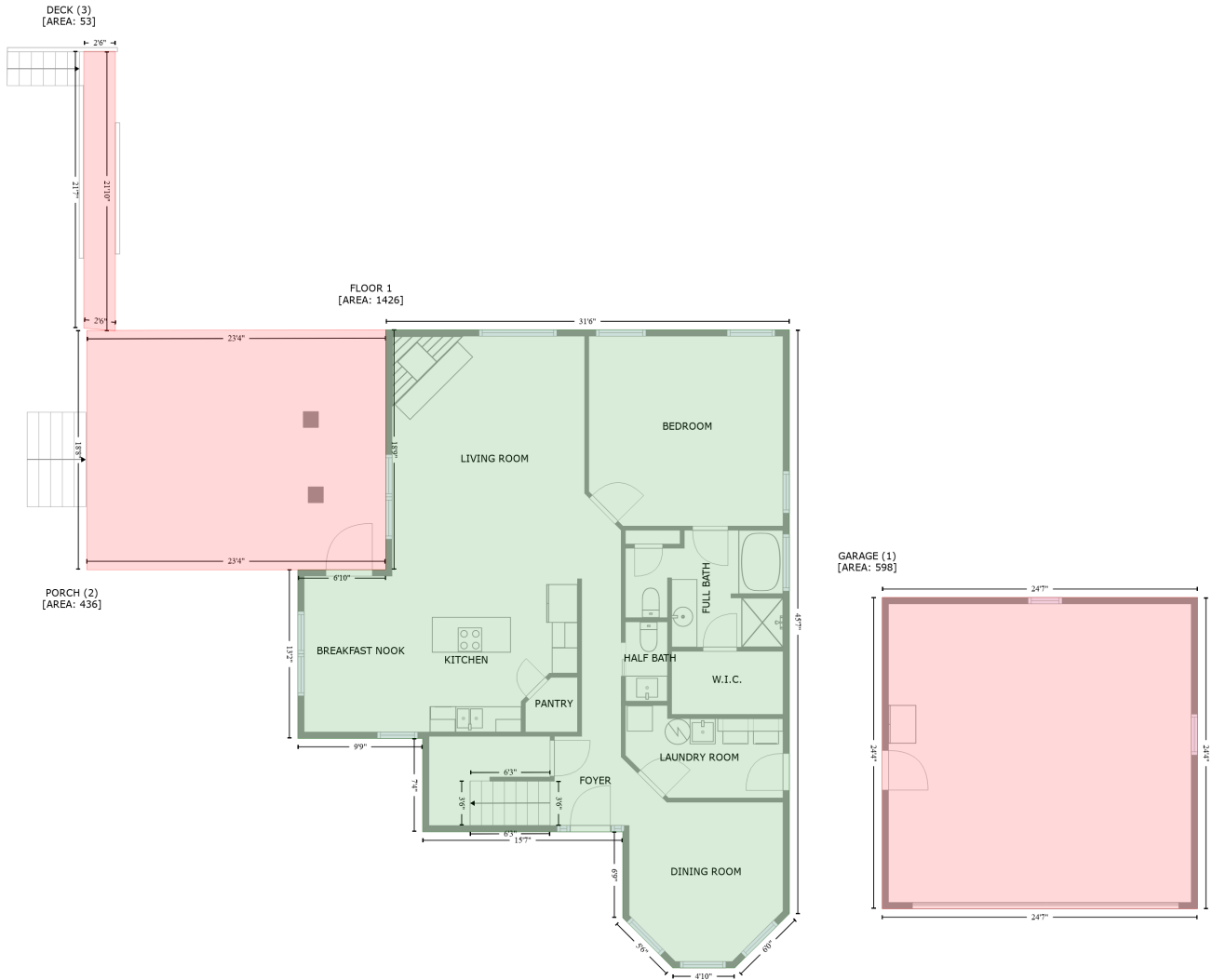


# 1395 Manley Road, New Market, Madison County, Alabama, United States, 35761

Gross Living Area: 2752 sq. ft



Space	Area (sq. ft)	Calculation <small>Coordinate Polygon Area Algorithm using inches</small>
FLOOR 1 (Living area)	1426	$-((745.2 + 745.2) * (390.7 - 937.7) + (745.2 + 694) * (937.7 - 988.5) + (694 + 635.9) * (988.5 - 988.5) + (635.9 + 589.1) * (988.5 - 941.7) + (589.1 + 589.1) * (941.7 - 861.1) + (589.1 + 401.7) * (861.1 - 861.1) + (401.7 + 401.7) * (861.1 - 773.5) + (401.7 + 284.7) * (773.5 - 773.5) + (284.7 + 284.7) * (773.5 - 615.5) + (284.7 + 367) * (615.5 - 615.5) + (367 + 367) * (615.5 - 390.7) + (367 + 745.2) * (390.7 - 390.7)) * 0.5 * 0.00694$
GARAGE (Non-living area)	598	$-((1127.5 + 1127.5) * (641.4 - 933.1) + (1127.5 + 832) * (933.1 - 933.1) + (832 + 832) * (933.1 - 641.4) + (832 + 1127.5) * (641.4 - 641.4)) * 0.5 * 0.00694$
PORCH (Non-living area)	436	$-((367 + 367) * (390.7 - 615.5) + (367 + 87.1) * (615.5 - 615.5) + (87.1 + 87.1) * (615.5 - 391.3) + (87.1 + 367) * (391.3 - 390.7)) * 0.5 * 0.00694$
DECK (Non-living area)	53	$-((113.9 + 113.9) * (129.8 - 391.7) + (113.9 + 84.3) * (391.7 - 389.2) + (84.3 + 84.3) * (389.2 - 129.8) + (84.3 + 113.9) * (129.8 - 129.8)) * 0.5 * 0.00694$

# 1395 Manley Road, New Market, Madison County, Alabama, United States, 35761

Gross Living Area: 2752 sq. ft

BALCONY (1) [AREA: 120] FLOOR 2 [AREA: 1326]



Space	Area (sq. ft)	Calculation <small>Coordinate Polygon Area Algorithm using inches</small>
FLOOR 2 (Living area)	1326	$-((745.2 + 745.2) * (390.7 - 875.5) + (745.2 + 524.1) * (875.5 - 875.5) + (524.1 + 524.1) * (875.5 - 860.8) + (524.1 + 401.7) * (860.8 - 860.8) + (401.7 + 401.7) * (860.8 - 773.5) + (401.7 + 284.7) * (773.5 - 773.5) + (284.7 + 284.7) * (773.5 - 615.5) + (284.7 + 367.2) * (615.5 - 615.5) + (367.2 + 367.2) * (615.5 - 390.7) + (367.2 + 745.2) * (390.7 - 390.7)) * 0.5 * 0.00694$
BALCONY (Non-living area)	120	$-((367.2 + 367.2) * (394.3 - 615.5) + (367.2 + 288.7) * (615.5 - 615.5) + (288.7 + 288.7) * (615.5 - 394.3) + (288.7 + 367.2) * (394.3 - 394.3)) * 0.5 * 0.00694$