

514 Granite Street, Ashland, Oregon 97520, United States

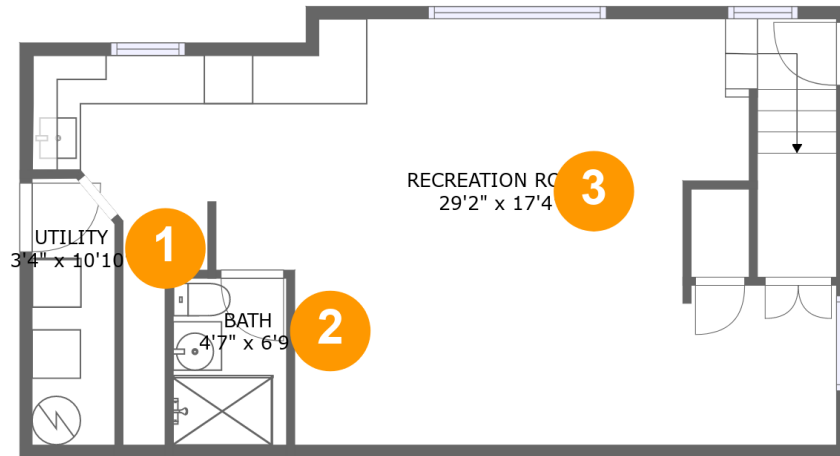


Property summary

 **0** Garages  **2** Bedrooms  **2** Bathrooms  **1** Half baths

 **3** Floors  **2,001** Gross living area sqft  **2,323** Total sqft

514 Granite Street, Ashland, Oregon 97520, United States



Room dimensions

Floor 1

Total sqft: 602 Living area: 560

#		Dimensions	sqft	Counted as living area
1	Utility	3'4" x 10'10"	35 sq. ft	No
2	Bath	4'7" x 6'9"	31 sq. ft	Yes
3	Recreation Room	29'2" x 17'4"	458 sq. ft	Yes

514 Granite Street, Ashland, Oregon 97520, United States



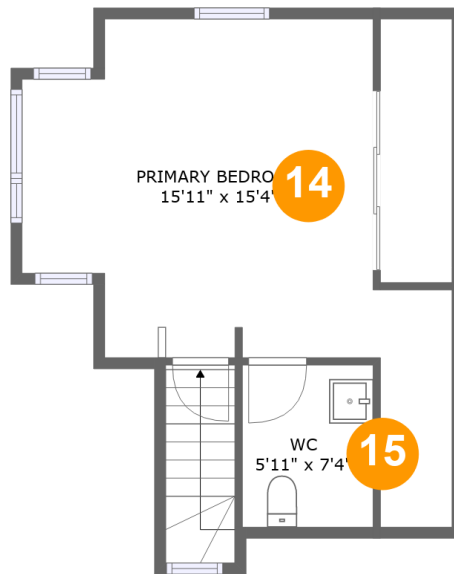
Room dimensions

Floor 2

Total sqft: 1296 Living area: 1128

#		Dimensions	sqft	Counted as living area
4	Breakfast Nook	9'6" x 15'10"	106 sq. ft	Yes
5	Foyer	5'8" x 9'9"	53 sq. ft	Yes
6	Living Room	15'5" x 17'11"	288 sq. ft	Yes
7	Bath	7'10" x 10'10"	75 sq. ft	Yes
8	Kitchen	8'10" x 15'10"	142 sq. ft	Yes
9	Dining Area	15'4" x 9'7"	155 sq. ft	Yes
10	Porch	7'10" x 9'9"	71 sq. ft	No
11	Primary Bedroom	11'4" x 11'8"	132 sq. ft	Yes
12	W.I.C.	5'3" x 6'0"	28 sq. ft	Yes
13	Balcony	11'4" x 8'7"	97 sq. ft	No

514 Granite Street, Ashland, Oregon 97520, United States



Room dimensions

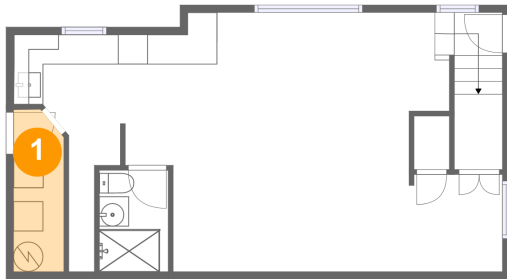
Floor 3

Total sqft: 425 Living area: 313

#		Dimensions	sqft	Counted as living area
14	Primary Bedroom	15'11" x 15'4"	204 sq. ft	Yes
15	WC	5'11" x 7'4"	44 sq. ft	Yes

514 Granite Street, Ashland, Oregon 97520, United States

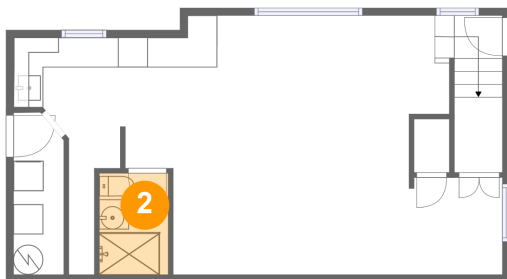
1 Floor 1 - Utility



Dimensions: 3'4" x 10'10"
Area: 35 sq. ft
Counted as living area: No

Heated: Yes
Finished: No
Enclosed: Yes
Contiguous: Yes
Permitted: Yes
Wet space: No
Addition: No
Conversion: No

2 Floor 1 - Bath

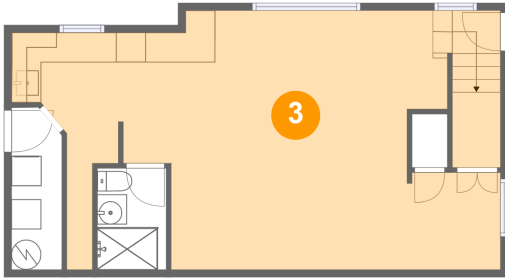


Dimensions: 4'7" x 6'9"
Area: 31 sq. ft
Counted as living area: Yes

Heated: Yes
Finished: Yes
Enclosed: Yes
Contiguous: Yes
Permitted: Yes
Wet space: Yes
Addition: No
Conversion: No

514 Granite Street, Ashland, Oregon 97520, United States

3 Floor 1 - Recreation Room



Dimensions: 29'2" x 17'4"
Area: 458 sq. ft
Counted as living area: Yes

Heated: Yes
Finished: Yes
Enclosed: Yes
Contiguous: Yes
Permitted: Yes
Wet space: No
Addition: No
Conversion: No

4 Floor 2 - Breakfast Nook



Dimensions: 9'6" x 15'10"
Area: 106 sq. ft
Counted as living area: Yes

Heated: Yes
Finished: Yes
Enclosed: Yes
Contiguous: Yes
Permitted: Yes
Wet space: No
Addition: No
Conversion: No

5 Floor 2 - Foyer



Dimensions: 5'8" x 9'9"
Area: 53 sq. ft
Counted as living area: Yes

Heated: Yes
Finished: Yes
Enclosed: Yes
Contiguous: Yes
Permitted: Yes
Wet space: No
Addition: No
Conversion: No

514 Granite Street, Ashland, Oregon 97520, United States

6 Floor 2 - Living Room



Dimensions: 15'5" x 17'11"
Area: 288 sq. ft
Counted as living area: Yes

Heated: Yes
Finished: Yes
Enclosed: Yes
Contiguous: Yes
Permitted: Yes
Wet space: No
Addition: No
Conversion: No

7 Floor 2 - Bath



Dimensions: 7'10" x 10'10"
Area: 75 sq. ft
Counted as living area: Yes

Heated: Yes
Finished: Yes
Enclosed: Yes
Contiguous: Yes
Permitted: Yes
Wet space: Yes
Addition: No
Conversion: No

8 Floor 2 - Kitchen



Dimensions: 8'10" x 15'10"
Area: 142 sq. ft
Counted as living area: Yes

Heated: Yes
Finished: Yes
Enclosed: Yes
Contiguous: Yes
Permitted: Yes
Wet space: No
Addition: No
Conversion: No

514 Granite Street, Ashland, Oregon 97520, United States

9 Floor 2 - Dining Area



Dimensions: 15'4" x 9'7"
Area: 155 sq. ft
Counted as living area: Yes

Heated: Yes
Finished: Yes
Enclosed: Yes
Contiguous: Yes
Permitted: Yes
Wet space: No
Addition: No
Conversion: No

10 Floor 2 - Porch



Dimensions: 7'10" x 9'9"
Area: 71 sq. ft
Counted as living area: No

Heated: No
Finished: Yes
Enclosed: No
Contiguous: Yes
Permitted: Yes
Wet space: No
Addition: No
Conversion: No

11 Floor 2 - Primary Bedroom



Dimensions: 11'4" x 11'8"
Area: 132 sq. ft
Counted as living area: Yes

Heated: Yes
Finished: Yes
Enclosed: Yes
Contiguous: Yes
Permitted: Yes
Wet space: No
Addition: No
Conversion: No

514 Granite Street, Ashland, Oregon 97520, United States

12 Floor 2 - W.I.C.



Dimensions: 5'3" x 6'0"
Area: 28 sq. ft
Counted as living area: Yes

Heated: Yes
Finished: Yes
Enclosed: Yes
Contiguous: Yes
Permitted: Yes
Wet space: No
Addition: No
Conversion: No

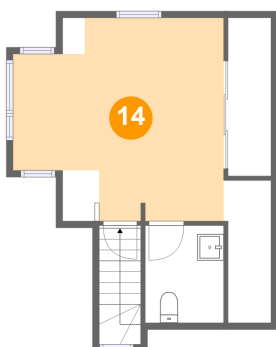
13 Floor 2 - Balcony



Dimensions: 11'4" x 8'7"
Area: 97 sq. ft
Counted as living area: No

Heated: No
Finished: Yes
Enclosed: No
Contiguous: Yes
Permitted: Yes
Wet space: No
Addition: No
Conversion: No

14 Floor 3 - Primary Bedroom

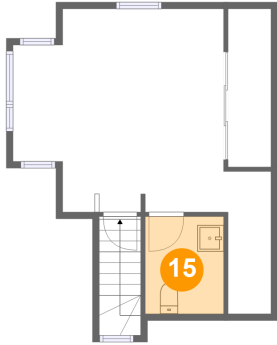


Dimensions: 15'11" x 15'4"
Area: 204 sq. ft
Counted as living area: Yes

Heated: Yes
Finished: Yes
Enclosed: Yes
Contiguous: Yes
Permitted: Yes
Wet space: No
Addition: No
Conversion: No

514 Granite Street, Ashland, Oregon 97520, United States

15 Floor 3 - WC



Dimensions: 5'11" x 7'4"
Area: 44 sq. ft
Counted as living area: Yes

Heated: Yes
Finished: Yes
Enclosed: Yes
Contiguous: Yes
Permitted: Yes
Wet space: Yes
Addition: No
Conversion: No