



Home report


3311 Creek Gate Dr,League City,TX,US




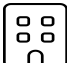
Property summary


**1** Garages


**4** Bedrooms

**2** Bathrooms

**0** Half baths

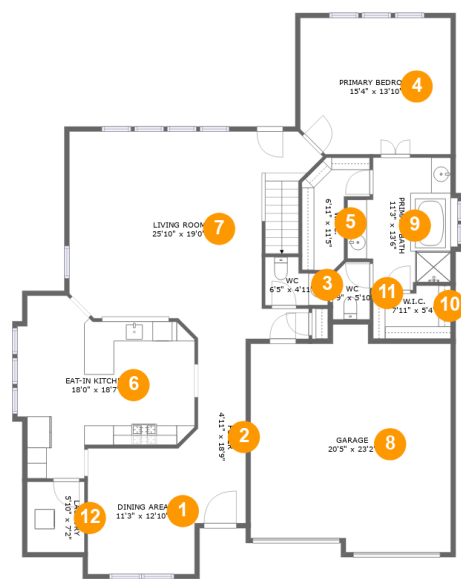
**2** Floors

**2,622** Gross living area sqft

**3,567** Total sqft

Home report

3311 Creek Gate Dr,League City,TX,US



Room dimensions

Floor 1 Total sqft: 2065 Living area: 1617

#		Dimensions	sqft	Counted as living area
1	Dining Area	11'3" x 12'10"	144 sq. ft	Yes
2	Foyer	4'11" x 18'9"	92 sq. ft	Yes
3	WC	6'5" x 4'11"	27 sq. ft	Yes
4	Primary Bedroom	15'4" x 13'10"	210 sq. ft	Yes
5	W.I.C.	6'11" x 11'5"	56 sq. ft	Yes
6	Eat-in Kitchen	18'0" x 18'7"	256 sq. ft	Yes
7	Living Room	25'10" x 19'0"	452 sq. ft	Yes
8	Garage	20'5" x 23'2"	426 sq. ft	No
9	Primary Bath	11'3" x 13'6"	123 sq. ft	Yes
10	W.I.C.	7'11" x 5'4"	39 sq. ft	Yes
11	WC	3'9" x 5'10"	22 sq. ft	Yes

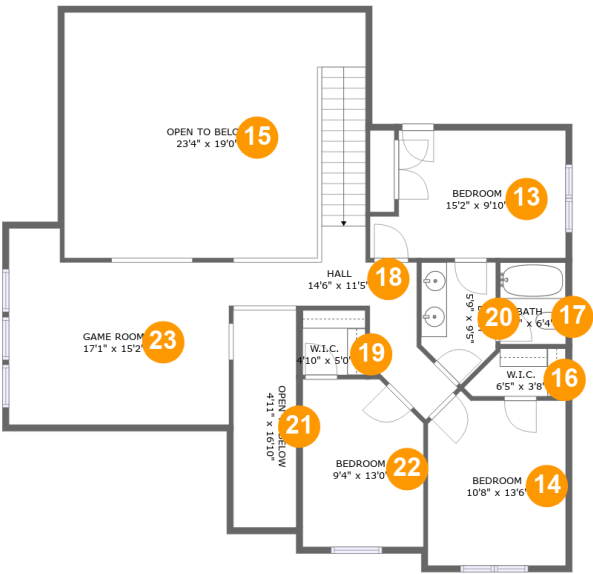
Home report

3311 Creek Gate Dr,League City,TX,US

#		Dimensions	sqft	Counted as living area
12	Laundry	5'10" x 7'2"	42 sq. ft	Yes

Home report

3311 Creek Gate Dr,League City,TX,US

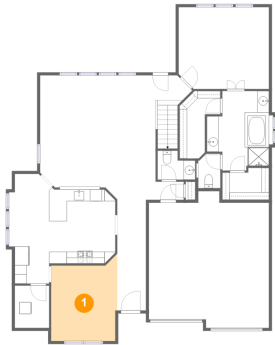


Room dimensions

Floor 2 Total sqft: 1502    Living area: 1005

#		Dimensions	sqft	Counted as living area
13	Bedroom	15'2" x 9'10"	135 sq. ft	Yes
14	Bedroom	10'8" x 13'6"	136 sq. ft	Yes
15	Open To Below	23'4" x 19'0"	386 sq. ft	No
16	W.I.C.	6'5" x 3'8"	24 sq. ft	Yes
17	Bath	5'1" x 6'4"	32 sq. ft	Yes
18	Hall	14'6" x 11'5"	142 sq. ft	Yes
19	W.I.C.	4'10" x 5'0"	24 sq. ft	Yes
20	Bath	5'9" x 9'5"	46 sq. ft	Yes
21	Open To Below	4'11" x 16'10"	82 sq. ft	No
22	Bedroom	9'4" x 13'0"	116 sq. ft	Yes
23	Game Room	17'1" x 15'2"	233 sq. ft	Yes

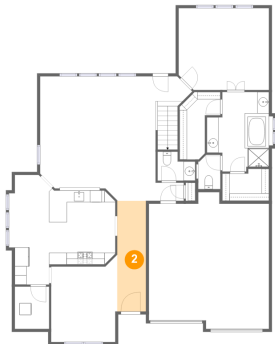
1 Floor 1 - Dining Area



Dimensions: 11'3" x 12'10"  
Area: 144 sq. ft  
Counted as living area: Yes

Heated: Yes  
Finished: Yes  
Enclosed: Yes  
Contiguous: Yes  
Permitted: Yes  
Wet space: No  
Addition: No  
Conversion: No

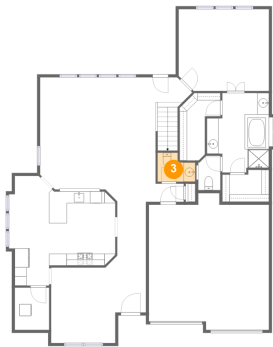
2 Floor 1 - Foyer



Dimensions: 4'11" x 18'9"  
Area: 92 sq. ft  
Counted as living area: Yes

Heated: Yes  
Finished: Yes  
Enclosed: Yes  
Contiguous: Yes  
Permitted: Yes  
Wet space: No  
Addition: No  
Conversion: No

3 Floor 1 - WC



Dimensions: 6'5" x 4'11"  
Area: 27 sq. ft  
Counted as living area: Yes

Heated: Yes  
Finished: Yes  
Enclosed: Yes  
Contiguous: Yes  
Permitted: Yes  
Wet space: Yes  
Addition: No  
Conversion: No

4 Floor 1 - Primary Bedroom



Dimensions: 15'4" x 13'10"  
Area: 210 sq. ft  
Counted as living area: Yes

Heated: Yes  
Finished: Yes  
Enclosed: Yes  
Contiguous: Yes  
Permitted: Yes  
Wet space: No  
Addition: No  
Conversion: No

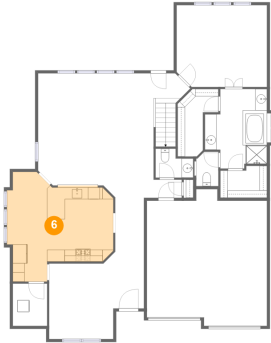
5 Floor 1 - W.I.C.



Dimensions: 6'11" x 11'5"  
Area: 56 sq. ft  
Counted as living area: Yes

Heated: Yes  
Finished: Yes  
Enclosed: Yes  
Contiguous: Yes  
Permitted: Yes  
Wet space: No  
Addition: No  
Conversion: No

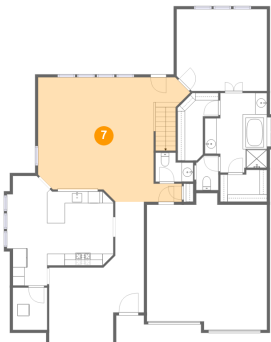
## 6 Floor 1 - Eat-in Kitchen



Dimensions: 18'0" x 18'7"  
Area: 256 sq. ft  
Counted as living area: Yes

Heated: Yes  
Finished: Yes  
Enclosed: Yes  
Contiguous: Yes  
Permitted: Yes  
Wet space: No  
Addition: No  
Conversion: No

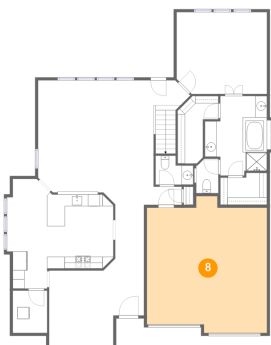
## 7 Floor 1 - Living Room



Dimensions: 25'10" x 19'0"  
Area: 452 sq. ft  
Counted as living area: Yes

Heated: Yes  
Finished: Yes  
Enclosed: Yes  
Contiguous: Yes  
Permitted: Yes  
Wet space: No  
Addition: No  
Conversion: No

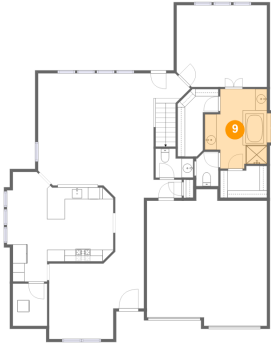
## 8 Floor 1 - Garage



Dimensions: 20'5" x 23'2"  
Area: 426 sq. ft  
Counted as living area: No

Heated: No  
Finished: No  
Enclosed: Yes  
Contiguous: Yes  
Permitted: Yes  
Wet space: No  
Addition: No  
Conversion: No

## 9 Floor 1 - Primary Bath



Dimensions: 11'3" x 13'6"  
Area: 123 sq. ft  
Counted as living area: Yes

Heated: Yes  
Finished: Yes  
Enclosed: Yes  
Contiguous: Yes  
Permitted: Yes  
Wet space: Yes  
Addition: No  
Conversion: No

## 10 Floor 1 - W.I.C.



Dimensions: 7'11" x 5'4"  
Area: 39 sq. ft  
Counted as living area: Yes

Heated: Yes  
Finished: Yes  
Enclosed: Yes  
Contiguous: Yes  
Permitted: Yes  
Wet space: No  
Addition: No  
Conversion: No

## 11 Floor 1 - WC



Dimensions: 3'9" x 5'10"  
Area: 22 sq. ft  
Counted as living area: Yes

Heated: Yes  
Finished: Yes  
Enclosed: Yes  
Contiguous: Yes  
Permitted: Yes  
Wet space: Yes  
Addition: No  
Conversion: No

12 Floor 1 - Laundry



Dimensions: 5'10" x 7'2"  
Area: 42 sq. ft  
Counted as living area: Yes

Heated: Yes  
Finished: Yes  
Enclosed: Yes  
Contiguous: Yes  
Permitted: Yes  
Wet space: No  
Addition: No  
Conversion: No

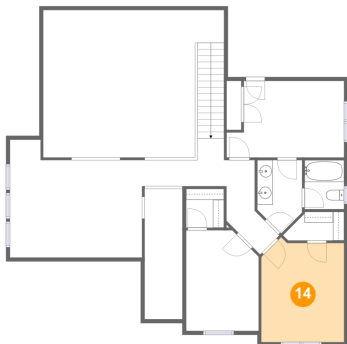
13 Floor 2 - Bedroom



Dimensions: 15'2" x 9'10"  
Area: 135 sq. ft  
Counted as living area: Yes

Heated: Yes  
Finished: Yes  
Enclosed: Yes  
Contiguous: Yes  
Permitted: Yes  
Wet space: No  
Addition: No  
Conversion: No

14 Floor 2 - Bedroom



Dimensions: 10'8" x 13'6"  
Area: 136 sq. ft  
Counted as living area: Yes

Heated: Yes  
Finished: Yes  
Enclosed: Yes  
Contiguous: Yes  
Permitted: Yes  
Wet space: No  
Addition: No  
Conversion: No

## 15 Floor 2 - Open To Below



Dimensions: 23'4" x 19'0"  
Area: 386 sq. ft  
Counted as living area: No

Heated: No  
Finished: No  
Enclosed: No  
Contiguous: Yes  
Permitted: No  
Wet space: No  
Addition: No  
Conversion: No

## 16 Floor 2 - W.I.C.



Dimensions: 6'5" x 3'8"  
Area: 24 sq. ft  
Counted as living area: Yes

Heated: Yes  
Finished: Yes  
Enclosed: Yes  
Contiguous: Yes  
Permitted: Yes  
Wet space: No  
Addition: No  
Conversion: No

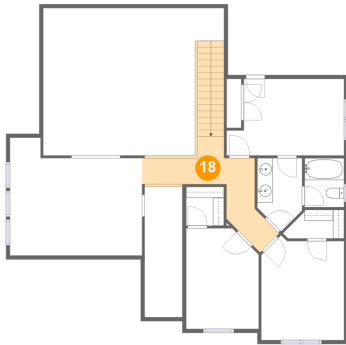
## 17 Floor 2 - Bath



Dimensions: 5'1" x 6'4"  
Area: 32 sq. ft  
Counted as living area: Yes

Heated: Yes  
Finished: Yes  
Enclosed: Yes  
Contiguous: Yes  
Permitted: Yes  
Wet space: Yes  
Addition: No  
Conversion: No

## 18 Floor 2 - Hall



Dimensions: 14'6" x 11'5"  
Area: 142 sq. ft  
Counted as living area: Yes

Heated: Yes  
Finished: Yes  
Enclosed: Yes  
Contiguous: Yes  
Permitted: Yes  
Wet space: No  
Addition: No  
Conversion: No

## 19 Floor 2 - W.I.C.



Dimensions: 4'10" x 5'0"  
Area: 24 sq. ft  
Counted as living area: Yes

Heated: Yes  
Finished: Yes  
Enclosed: Yes  
Contiguous: Yes  
Permitted: Yes  
Wet space: No  
Addition: No  
Conversion: No

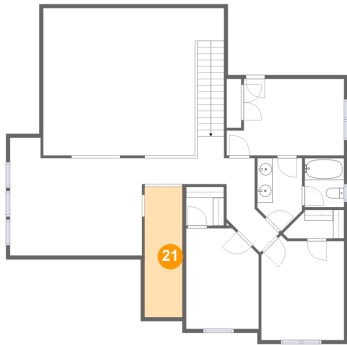
## 20 Floor 2 - Bath



Dimensions: 5'9" x 9'5"  
Area: 46 sq. ft  
Counted as living area: Yes

Heated: Yes  
Finished: Yes  
Enclosed: Yes  
Contiguous: Yes  
Permitted: Yes  
Wet space: Yes  
Addition: No  
Conversion: No

## 21 Floor 2 - Open To Below



Dimensions: 4'11" x 16'10"  
Area: 82 sq. ft  
Counted as living area: No

Heated: No  
Finished: No  
Enclosed: No  
Contiguous: Yes  
Permitted: No  
Wet space: No  
Addition: No  
Conversion: No

## 22 Floor 2 - Bedroom



Dimensions: 9'4" x 13'0"  
Area: 116 sq. ft  
Counted as living area: Yes

Heated: Yes  
Finished: Yes  
Enclosed: Yes  
Contiguous: Yes  
Permitted: Yes  
Wet space: No  
Addition: No  
Conversion: No

## 23 Floor 2 - Game Room



Dimensions: 17'1" x 15'2"  
Area: 233 sq. ft  
Counted as living area: Yes

Heated: Yes  
Finished: Yes  
Enclosed: Yes  
Contiguous: Yes  
Permitted: Yes  
Wet space: No  
Addition: No  
Conversion: No