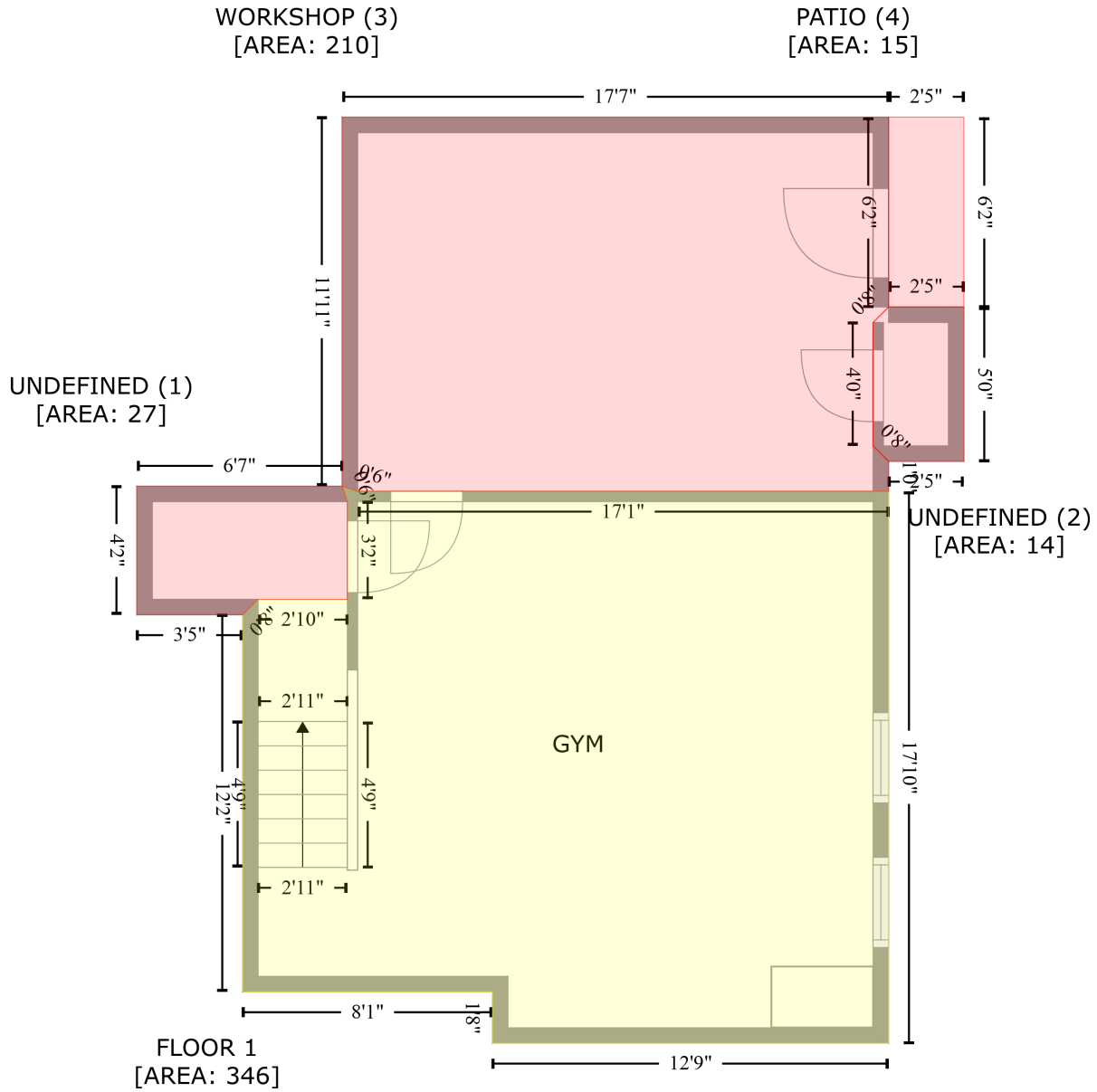


4644 Snow Dr, Harrisburg, NC, US

Gross Living Area: 4286 sq. ft

Level 1 - Below Grade



Space	Area (sq. ft)	Calculation
FLOOR 1 (Living area)	346	Coordinate Polygon Area Algorithm using inches $-((620.4 + 626.4) * (655.5 - 657.5) + (626.4 + 831.8) * (657.5 - 657.5) + (831.8 + 831.8) * (657.5 - 871.2) + (831.8 + 678.6) * (871.2 - 871.2) + (678.6 + 678.6) * (871.2 - 851.3) + (678.6 + 581.9) * (851.3 - 851.3) + (581.9 + 581.9) * (851.3 - 705.3) + (581.9 + 587.9) * (705.3 - 699.3) + (587.9 + 622.4) * (699.3 - 699.3) + (622.4 + 622.4) * (699.3 - 661.5) + (622.4 + 620.4) * (661.5 - 655.5)) * 0.5 * 0.00694$

4644 Snow Dr,Harrisburg,NC,US

Gross Living Area: 4286 sq. ft

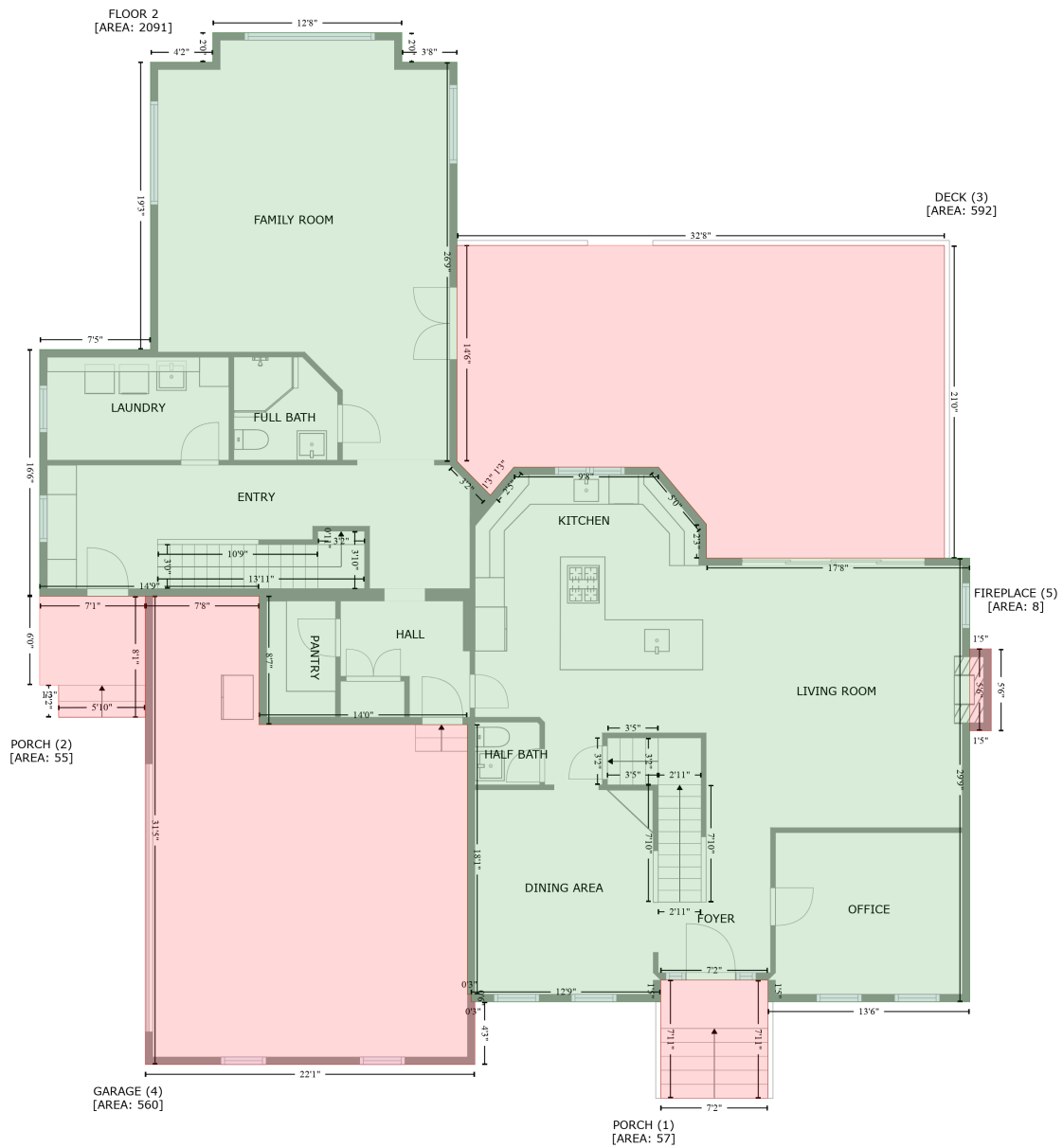
Level 1 - Below Grade

Space	Area (sq. ft)	Calculation <small>Coordinate Polygon Area Algorithm using inches</small>
UNDEFINED (Non-living area)	27	$-\left((620.4 + 622.4) * (655.5 - 661.5) + (622.4 + 622.4) * (661.5 - 699.3) + (622.4 + 587.9) * (699.3 - 699.3) + (587.9 + 581.9) * (699.3 - 705.3) + (581.9 + 541) * (705.3 - 705.3) + (541 + 541) * (705.3 - 655.5) + (541 + 620.4) * (655.5 - 655.5)\right) * 0.5 * 0.00694$
UNDEFINED (Non-living area)	14	$-\left((860.9 + 860.9) * (586.1 - 645.9) + (860.9 + 831.8) * (645.9 - 645.9) + (831.8 + 825.8) * (645.9 - 639.9) + (825.8 + 825.8) * (639.9 - 592.1) + (825.8 + 831.8) * (592.1 - 586.1) + (831.8 + 860.9) * (586.1 - 586.1)\right) * 0.5 * 0.00694$
WORKSHOP (Non-living area)	210	$-\left((831.8 + 831.8) * (512.6 - 586.1) + (831.8 + 825.8) * (586.1 - 592.1) + (825.8 + 825.8) * (592.1 - 639.9) + (825.8 + 831.8) * (639.9 - 645.9) + (831.8 + 831.8) * (645.9 - 657.5) + (831.8 + 626.4) * (657.5 - 657.5) + (626.4 + 620.4) * (657.5 - 655.5) + (620.4 + 620.4) * (655.5 - 512.6) + (620.4 + 831.8) * (512.6 - 512.6)\right) * 0.5 * 0.00694$
PATIO (Non-living area)	15	$-\left((860.9 + 860.9) * (512.6 - 586.1) + (860.9 + 831.8) * (586.1 - 586.1) + (831.8 + 831.8) * (586.1 - 512.6) + (831.8 + 860.9) * (512.6 - 512.6)\right) * 0.5 * 0.00694$

4644 Snow Dr, Harrisburg, NC, US

Gross Living Area: 4286 sq. ft

Level 2



4644 Snow Dr,Harrisburg,NC,US

Gross Living Area: 4286 sq. ft

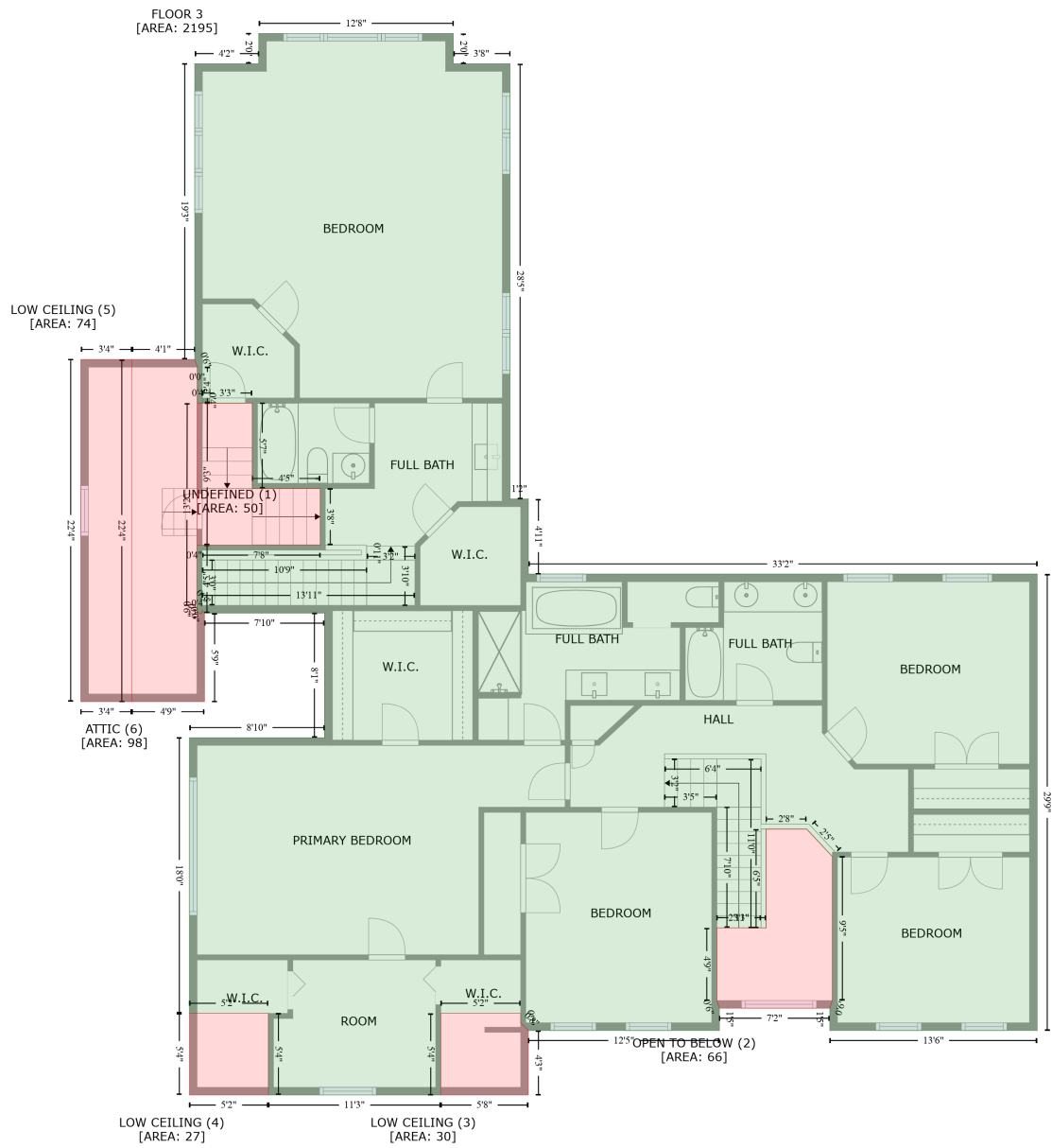
Level 2

Space	Area (sq. ft)	Calculation <small>Coordinate Polygon Area Algorithm using inches</small>
FLOOR 2 (Living area)	2091	$-\left((381.7 + 381.7) * (93.8 - 117.5) + (381.7 + 426) * (117.5 - 117.5) + (426 + 426) * (117.5 - 438.9) + (426 + 452.8) * (438.9 - 466.1) + (452.8 + 471.8) * (466.1 - 443.5) + (471.8 + 588.1) * (443.5 - 443.5) + (588.1 + 626.7) * (443.5 - 489.5) + (626.7 + 626.7) * (489.5 - 516.8) + (626.7 + 838.5) * (516.8 - 516.8) + (838.5 + 838.5) * (516.8 - 873.9) + (838.5 + 676.2) * (873.9 - 873.9) + (676.2 + 676.2) * (873.9 - 856.4) + (676.2 + 589.9) * (856.4 - 856.4) + (589.9 + 589.9) * (856.4 - 873.9) + (589.9 + 437.4) * (873.9 - 873.9) + (437.4 + 437.4) * (873.9 - 867.9) + (437.4 + 434.4) * (867.9 - 867.9) + (434.4 + 434.4) * (867.9 - 650.8) + (434.4 + 266.8) * (650.8 - 650.8) + (266.8 + 266.8) * (650.8 - 547.4) + (266.8 + 90.2) * (547.4 - 547.4) + (90.2 + 90.2) * (547.4 - 348.9) + (90.2 + 179.4) * (348.9 - 348.9) + (179.4 + 179.4) * (348.9 - 117.5) + (179.4 + 229.4) * (117.5 - 117.5) + (229.4 + 229.4) * (117.5 - 93.8) + (229.4 + 381.7) * (93.8 - 93.8)) * 0.5 * 0.00694$
PORCH (Non-living area)	57	$-\left((676.2 + 676.2) * (856.4 - 951.5) + (676.2 + 589.9) * (951.5 - 951.5) + (589.9 + 589.9) * (951.5 - 856.4) + (589.9 + 676.2) * (856.4 - 856.4)) * 0.5 * 0.00694$
PORCH (Non-living area)	55	$-\left((175.2 + 175.2) * (547.4 - 644.8) + (175.2 + 105.4) * (644.8 - 645) + (105.4 + 105.4) * (645 - 619) + (105.4 + 90.2) * (619 - 619) + (90.2 + 90.2) * (619 - 547.4) + (90.2 + 175.2) * (547.4 - 547.4)) * 0.5 * 0.00694$
DECK (Non-living area)	592	$-\left((818.2 + 818.2) * (265.1 - 516.8) + (818.2 + 626.7) * (516.8 - 516.8) + (626.7 + 626.7) * (516.8 - 489.5) + (626.7 + 588.1) * (489.5 - 443.5) + (588.1 + 471.8) * (443.5 - 443.5) + (471.8 + 462.2) * (443.5 - 454.7) + (462.2 + 452.8) * (454.7 - 466.1) + (452.8 + 426) * (466.1 - 438.9) + (426 + 426) * (438.9 - 265.1) + (426 + 818.2) * (265.1 - 265.1)) * 0.5 * 0.00694$
GARAGE (Non-living area)	560	$-\left((266.8 + 266.8) * (547.4 - 650.8) + (266.8 + 434.4) * (650.8 - 650.8) + (434.4 + 434.4) * (650.8 - 867.9) + (434.4 + 437.4) * (867.9 - 867.9) + (437.4 + 437.4) * (867.9 - 873.9) + (437.4 + 440.4) * (873.9 - 873.9) + (440.4 + 440.4) * (873.9 - 924.4) + (440.4 + 175.2) * (924.4 - 924.4) + (175.2 + 175.2) * (924.4 - 547.4) + (175.2 + 266.8) * (547.4 - 547.4)) * 0.5 * 0.00694$
FIREPLACE (Non-living area)	8	$-\left((855.9 + 855.9) * (589.8 - 655.8) + (855.9 + 838.5) * (655.8 - 655.8) + (838.5 + 838.5) * (655.8 - 589.8) + (838.5 + 855.9) * (589.8 - 589.8)) * 0.5 * 0.00694$

4644 Snow Dr, Harrisburg, NC, US

Gross Living Area: 4286 sq. ft

Level 3



4644 Snow Dr,Harrisburg,NC,US

Gross Living Area: 4286 sq. ft

Level 3

Space	Area (sq. ft)	Calculation <small>Coordinate Polygon Area Algorithm using inches</small>
FLOOR 3 (Living area)	2195	$-\left((381.7 + 381.7) * (93.8 - 117.5) + (381.7 + 426) * (117.5 - 117.5) + (426 + 426) * (117.5 - 458) + (426 + 440.4) * (458 - 458) + (440.4 + 440.4) * (458 - 516.8) + (440.4 + 838.5) * (516.8 - 516.8) + (838.5 + 838.5) * (516.8 - 873.9) + (838.5 + 676.2) * (873.9 - 873.9) + (676.2 + 676.2) * (873.9 - 856.4) + (676.2 + 678.2) * (856.4 - 850.4) + (678.2 + 678.2) * (850.4 - 737.8) + (678.2 + 658.2) * (737.8 - 716.3) + (658.2 + 626.4) * (716.3 - 716.3) + (626.4 + 626.4) * (716.3 - 793.6) + (626.4 + 587.9) * (793.6 - 793.6) + (587.9 + 587.9) * (793.6 - 850.4) + (587.9 + 589.9) * (850.4 - 856.4) + (589.9 + 589.9) * (856.4 - 873.9) + (589.9 + 440.4) * (873.9 - 873.9) + (440.4 + 434.4) * (873.9 - 867.9) + (434.4 + 434.4) * (867.9 - 860.5) + (434.4 + 371.9) * (860.5 - 860.5) + (371.9 + 371.9) * (860.5 - 924.4) + (371.9 + 237) * (924.4 - 924.4) + (237 + 237) * (924.4 - 860.5) + (237 + 175.2) * (860.5 - 860.5) + (175.2 + 175.2) * (860.5 - 644.8) + (175.2 + 280.9) * (644.8 - 644.8) + (280.9 + 280.9) * (644.8 - 547.4) + (280.9 + 187) * (547.4 - 547.4) + (187 + 185) * (547.4 - 545.3) + (185 + 185.1) * (545.3 - 547.4) + (185.1 + 181.1) * (547.4 - 547.4) + (181.1 + 181.1) * (547.4 - 494.1) + (181.1 + 185.1) * (494.1 - 494.1) + (185.1 + 277.5) * (494.1 - 494.1) + (277.5 + 277.5) * (494.1 - 449.9) + (277.5 + 224.4) * (449.9 - 449.9) + (224.4 + 224.4) * (449.9 - 383.1) + (224.4 + 185.4) * (383.1 - 383.1) + (185.4 + 185.4) * (383.1 - 379.1) + (185.4 + 185.3) * (379.1 - 383.1) + (185.3 + 181.3) * (383.1 - 383) + (181.3 + 181.4) * (383 - 354.9) + (181.4 + 181.4) * (354.9 - 354.9) + (181.4 + 179.4) * (354.9 - 348.9) + (179.4 + 179.4) * (348.9 - 117.5) + (179.4 + 229.4) * (117.5 - 117.5) + (229.4 + 229.4) * (117.5 - 93.8) + (229.4 + 381.7) * (93.8 - 93.8)) * 0.5 * 0.00694$
UNDEFINED (Non-living area)	50	$-\left((181.3 + 185.3) * (383 - 383.1) + (185.3 + 224.4) * (383.1 - 383.1) + (224.4 + 224.4) * (383.1 - 449.9) + (224.4 + 277.5) * (449.9 - 449.9) + (277.5 + 277.5) * (449.9 - 494.1) + (277.5 + 185.1) * (494.1 - 494.1) + (185.1 + 181.1) * (494.1 - 494.1) + (181.1 + 181.3) * (494.1 - 383)) * 0.5 * 0.00694$
OPEN TO BELOW (Non-living area)	66	$-\left((658.2 + 678.2) * (716.3 - 737.8) + (678.2 + 678.2) * (737.8 - 850.4) + (678.2 + 676.2) * (850.4 - 856.4) + (676.2 + 589.9) * (856.4 - 856.4) + (589.9 + 587.9) * (856.4 - 850.4) + (587.9 + 587.9) * (850.4 - 793.6) + (587.9 + 626.4) * (793.6 - 793.6) + (626.4 + 626.4) * (793.6 - 716.3) + (626.4 + 658.2) * (716.3 - 716.3)) * 0.5 * 0.00694$
LOW CEILING (Non-living area)	30	$-\left((434.4 + 434.4) * (860.5 - 867.9) + (434.4 + 440.4) * (867.9 - 873.9) + (440.4 + 440.4) * (873.9 - 924.4) + (440.4 + 371.9) * (924.4 - 924.4) + (371.9 + 371.9) * (924.4 - 860.5) + (371.9 + 434.4) * (860.5 - 860.5)) * 0.5 * 0.00694$
LOW CEILING (Non-living area)	27	$-\left((237 + 237) * (860.5 - 924.4) + (237 + 175.2) * (924.4 - 924.4) + (175.2 + 175.2) * (924.4 - 860.5) + (175.2 + 237) * (860.5 - 860.5)) * 0.5 * 0.00694$
LOW CEILING (Non-living area)	74	$-\left((130.2 + 130.2) * (348.9 - 616.6) + (130.2 + 90.2) * (616.6 - 616.6) + (90.2 + 90.2) * (616.6 - 348.9) + (90.2 + 130.2) * (348.9 - 348.9)) * 0.5 * 0.00694$
ATTIC (Non-living area)	98	$-\left((179.4 + 181.4) * (348.9 - 354.9) + (181.4 + 181.4) * (354.9 - 354.9) + (181.4 + 181.3) * (354.9 - 383.1) + (181.3 + 181) * (383.1 - 541.4) + (181 + 181.1) * (541.4 - 547.4) + (181.1 + 185.1) * (547.4 - 547.4) + (185.1 + 185) * (547.4 - 545.3) + (185 + 187) * (545.3 - 547.2) + (187 + 187) * (547.2 - 547.4) + (187 + 187) * (547.4 - 616.6) + (187 + 130.2) * (616.6 - 616.6) + (130.2 + 130.2) * (616.6 - 348.9) + (130.2 + 179.4) * (348.9 - 348.9)) * 0.5 * 0.00694$