


309 S Hopkins St, Newman, IL, US



Property summary

 **0** Garages

 **2** Bedrooms

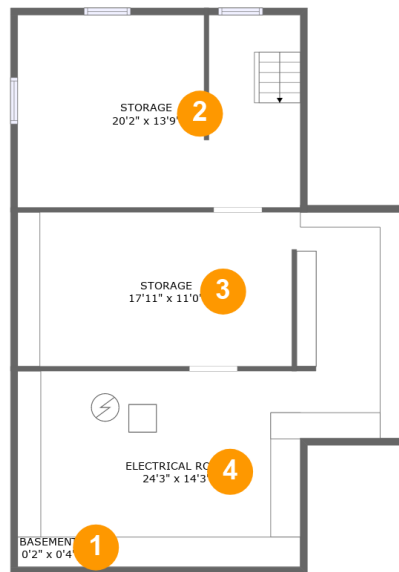
 **1** Bathrooms

 **0** Half baths

 **2** Floors

 **1,156** Gross living area sqft

 **2,209** Total sqft

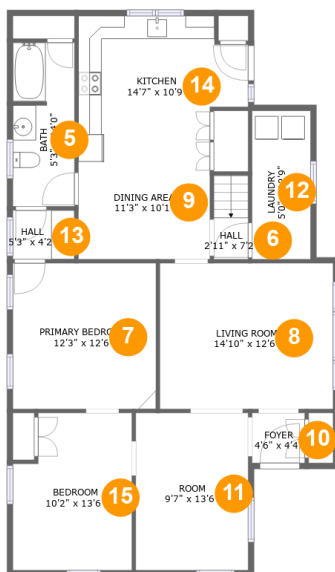
309 S Hopkins St, Newman, IL, US**Room dimensions**

Floor 1

Total sqft: 980

Living area: 0

| # | | Dimensions | sqft | Counted as living area |
|---|----------|----------------|------------|------------------------|
| 1 | Basement | 0'2" x 0'4" | 0 sq. ft | No |
| 2 | Storage | 20'2" x 13'9" | 274 sq. ft | No |
| 3 | Storage | 17'11" x 11'0" | 215 sq. ft | No |
| 4 | Room | 24'3" x 14'3" | 403 sq. ft | No |

309 S Hopkins St, Newman, IL, US**Room dimensions**

Floor 2

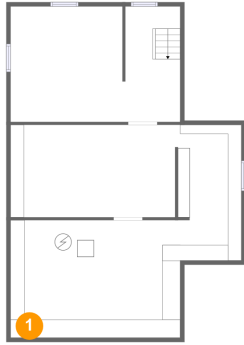
Total sqft: 1229 Living area: 1156

| # | | Dimensions | sqft | Counted as living area |
|----|-------------|----------------|------------|------------------------|
| 5 | Bath | 5'3" x 14'0" | 73 sq. ft | Yes |
| 6 | Hall | 2'11" x 7'2" | 21 sq. ft | Yes |
| 7 | Bedroom | 12'3" x 12'6" | 153 sq. ft | Yes |
| 8 | Living Room | 14'10" x 12'6" | 186 sq. ft | Yes |
| 9 | Dining Room | 11'3" x 10'1" | 114 sq. ft | Yes |
| 10 | Entry | 4'6" x 4'4" | 19 sq. ft | Yes |
| 11 | Room | 9'7" x 13'6" | 130 sq. ft | Yes |
| 12 | Utility | 5'0" x 12'9" | 64 sq. ft | No |
| 13 | Hall | 5'3" x 4'2" | 22 sq. ft | Yes |
| 14 | Kitchen | 14'7" x 10'9" | 141 sq. ft | Yes |
| 15 | Bedroom | 10'2" x 13'6" | 128 sq. ft | Yes |

Scan captured on Wed, 11 Dec 2024 18:27:21 GMT

Information is calculated by Cubicasa technology deemed highly reliable but not guaranteed.

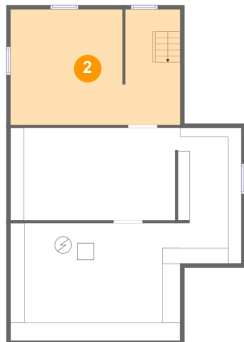
1 Floor 1 - Basement



Dimensions: 0'2" x 0'4"
Area: 0 sq. ft
Counted as living area: No

Heated: Yes
Finished: Yes
Enclosed: Yes
Contiguous: No
Permitted: Yes
Wet space: No
Addition: No
Conversion: No

2 Floor 1 - Storage



Dimensions: 20'2" x 13'9"
Area: 274 sq. ft
Counted as living area: No

Heated: No
Finished: No
Enclosed: No
Contiguous: Yes
Permitted: Yes
Wet space: No
Addition: No
Conversion: No

309 S Hopkins St, Newman, IL, US**3 Floor 1 - Storage****Dimensions:** 17'11" x 11'0"**Area:** 215 sq. ft**Counted as living area:** No**Heated:** No**Finished:** No**Enclosed:** No**Contiguous:** Yes**Permitted:** Yes**Wet space:** No**Addition:** No**Conversion:** No**4 Floor 1 - Room****Dimensions:** 24'3" x 14'3"**Area:** 403 sq. ft**Counted as living area:** No**Heated:** No**Finished:** No**Enclosed:** Yes**Contiguous:** Yes**Permitted:** Yes**Wet space:** No**Addition:** No**Conversion:** No**5 Floor 2 - Bath****Dimensions:** 5'3" x 14'0"**Area:** 73 sq. ft**Counted as living area:** Yes**Heated:** Yes**Finished:** Yes**Enclosed:** Yes**Contiguous:** Yes**Permitted:** Yes**Wet space:** Yes**Addition:** No**Conversion:** No

309 S Hopkins St, Newman, IL, US

6 Floor 2 - Hall



Dimensions: 2'11" x 7'2"
Area: 21 sq. ft
Counted as living area: Yes

Heated: Yes
Finished: Yes
Enclosed: Yes
Contiguous: Yes
Permitted: Yes
Wet space: No
Addition: No
Conversion: No

7 Floor 2 - Bedroom



Dimensions: 12'3" x 12'6"
Area: 153 sq. ft
Counted as living area: Yes

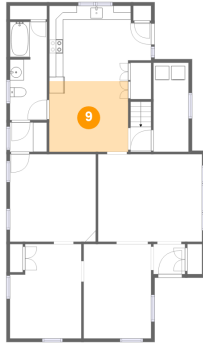
Heated: Yes
Finished: Yes
Enclosed: Yes
Contiguous: Yes
Permitted: Yes
Wet space: No
Addition: No
Conversion: No

8 Floor 2 - Living Room



Dimensions: 14'10" x 12'6"
Area: 186 sq. ft
Counted as living area: Yes

Heated: Yes
Finished: Yes
Enclosed: Yes
Contiguous: Yes
Permitted: Yes
Wet space: No
Addition: No
Conversion: No

309 S Hopkins St, Newman, IL, US**9 Floor 2 - Dining Room**

Dimensions: 11'3" x 10'1"
Area: 114 sq. ft
Counted as living area: Yes

Heated: Yes
Finished: Yes
Enclosed: Yes
Contiguous: Yes
Permitted: Yes
Wet space: No
Addition: No
Conversion: No

10 Floor 2 - Entry

Dimensions: 4'6" x 4'4"
Area: 19 sq. ft
Counted as living area: Yes

Heated: Yes
Finished: Yes
Enclosed: Yes
Contiguous: Yes
Permitted: Yes
Wet space: No
Addition: No
Conversion: No

11 Floor 2 - Room

Dimensions: 9'7" x 13'6"
Area: 130 sq. ft
Counted as living area: Yes

Heated: Yes
Finished: Yes
Enclosed: Yes
Contiguous: Yes
Permitted: Yes
Wet space: No
Addition: No
Conversion: No

309 S Hopkins St, Newman, IL, US**12 Floor 2 - Utility**

Dimensions: 5'0" x 12'9"
Area: 64 sq. ft
Counted as living area: No

Heated: Yes
Finished: Yes
Enclosed: Yes
Contiguous: Yes
Permitted: Yes
Wet space: No
Addition: No
Conversion: No

13 Floor 2 - Hall

Dimensions: 5'3" x 4'2"
Area: 22 sq. ft
Counted as living area: Yes

Heated: Yes
Finished: Yes
Enclosed: Yes
Contiguous: Yes
Permitted: Yes
Wet space: No
Addition: No
Conversion: No

14 Floor 2 - Kitchen

Dimensions: 14'7" x 10'9"
Area: 141 sq. ft
Counted as living area: Yes

Heated: Yes
Finished: Yes
Enclosed: Yes
Contiguous: Yes
Permitted: Yes
Wet space: No
Addition: No
Conversion: No

309 S Hopkins St, Newman, IL, US

15 Floor 2 - Bedroom



Dimensions: 10'2" x 13'6"
Area: 128 sq. ft
Counted as living area: Yes

Heated: Yes
Finished: Yes
Enclosed: Yes
Contiguous: Yes
Permitted: Yes
Wet space: No
Addition: No
Conversion: No