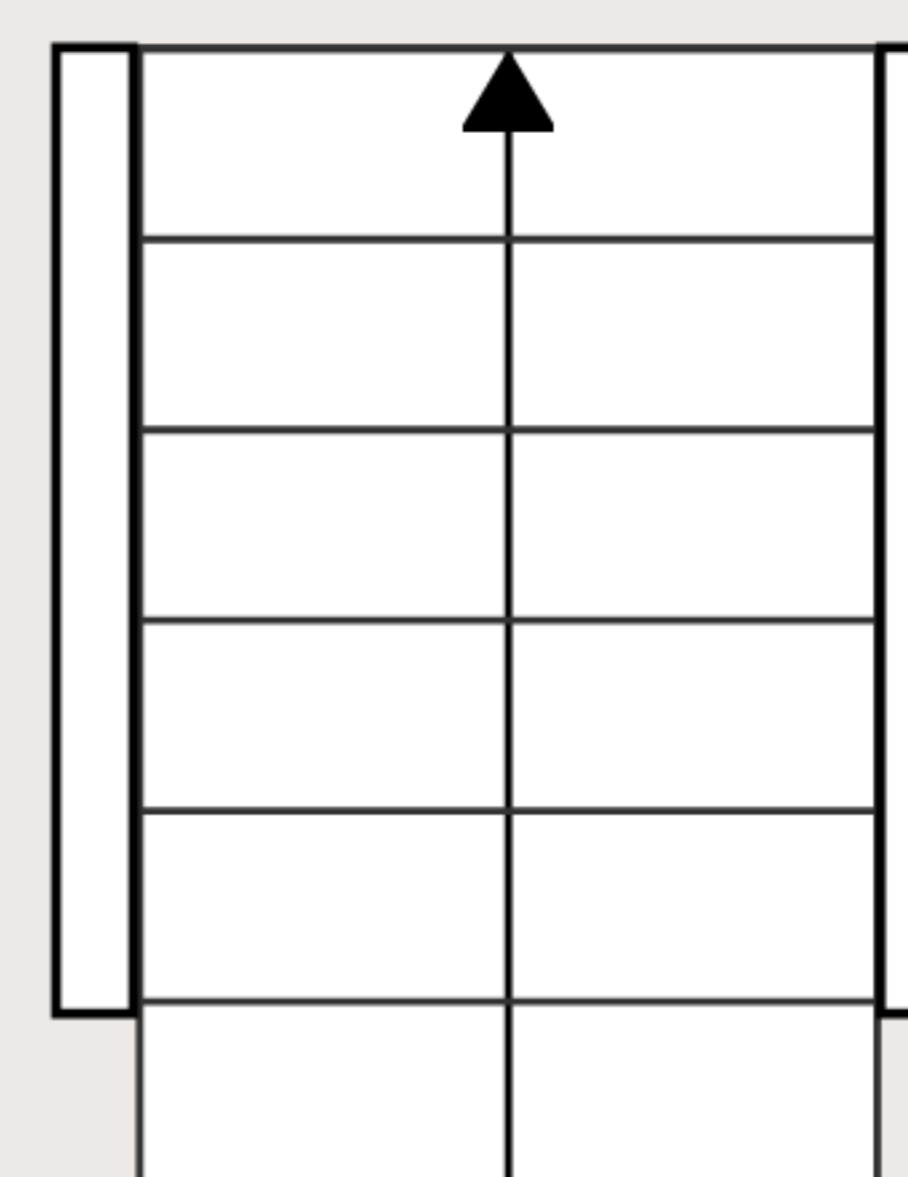


GARAGE
12'7" X 26'11"

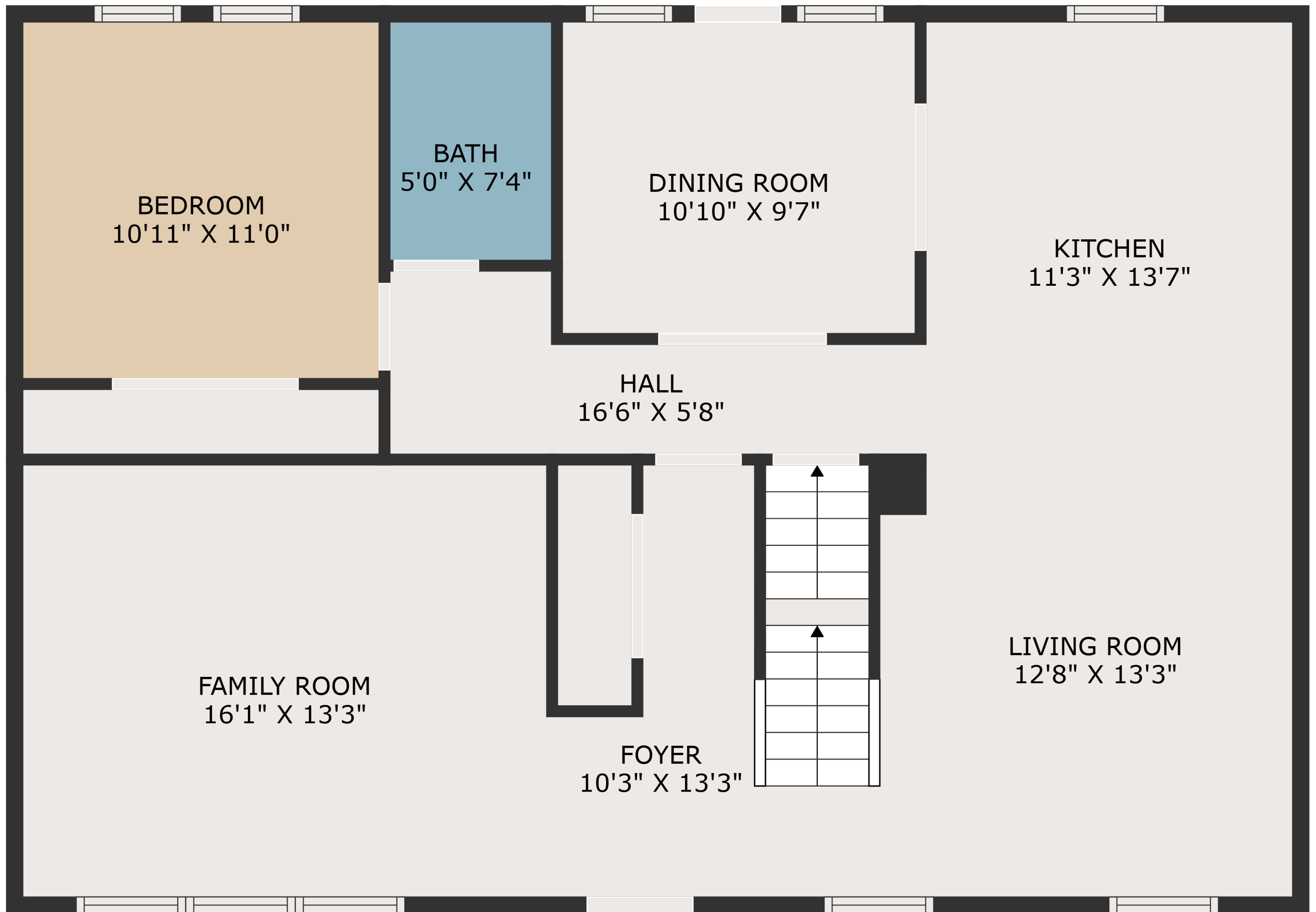
BASEMENT
25'11" X 26'11"



TOTAL: 1938 sq. ft

BELOW GROUND: 0 sq. ft, FLOOR 2: 1051 sq. ft, FLOOR 3: 887 sq. ft
EXCLUDED AREAS: BASEMENT: 698 sq. ft, GARAGE: 339 sq. ft, LOW CEILING: 53 sq. ft

MEASUREMENTS ARE DEEMED HIGHLY RELIABLE BUT NOT GUARANTEED.



TOTAL: 1938 sq. ft

BELOW GROUND: 0 sq. ft, FLOOR 2: 1051 sq. ft, FLOOR 3: 887 sq. ft
EXCLUDED AREAS: BASEMENT: 698 sq. ft, GARAGE: 339 sq. ft, LOW CEILING: 53 sq. ft

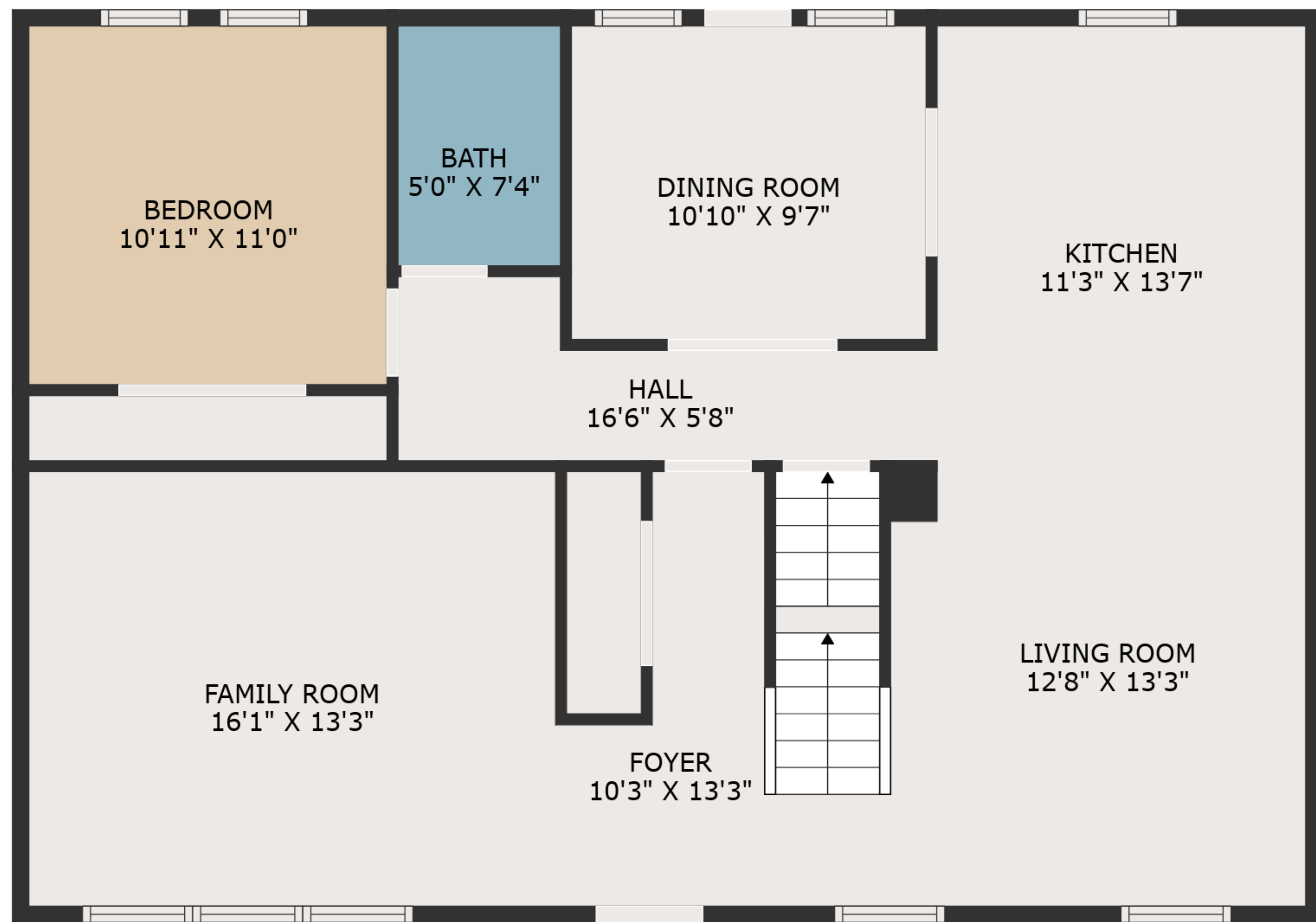
MEASUREMENTS ARE DEEMED HIGHLY RELIABLE BUT NOT GUARANTEED.



TOTAL: 1938 sq. ft

BELOW GROUND: 0 sq. ft, FLOOR 2: 1051 sq. ft, FLOOR 3: 887 sq. ft
 EXCLUDED AREAS: BASEMENT: 698 sq. ft, GARAGE: 339 sq. ft, LOW CEILING: 53 sq. ft

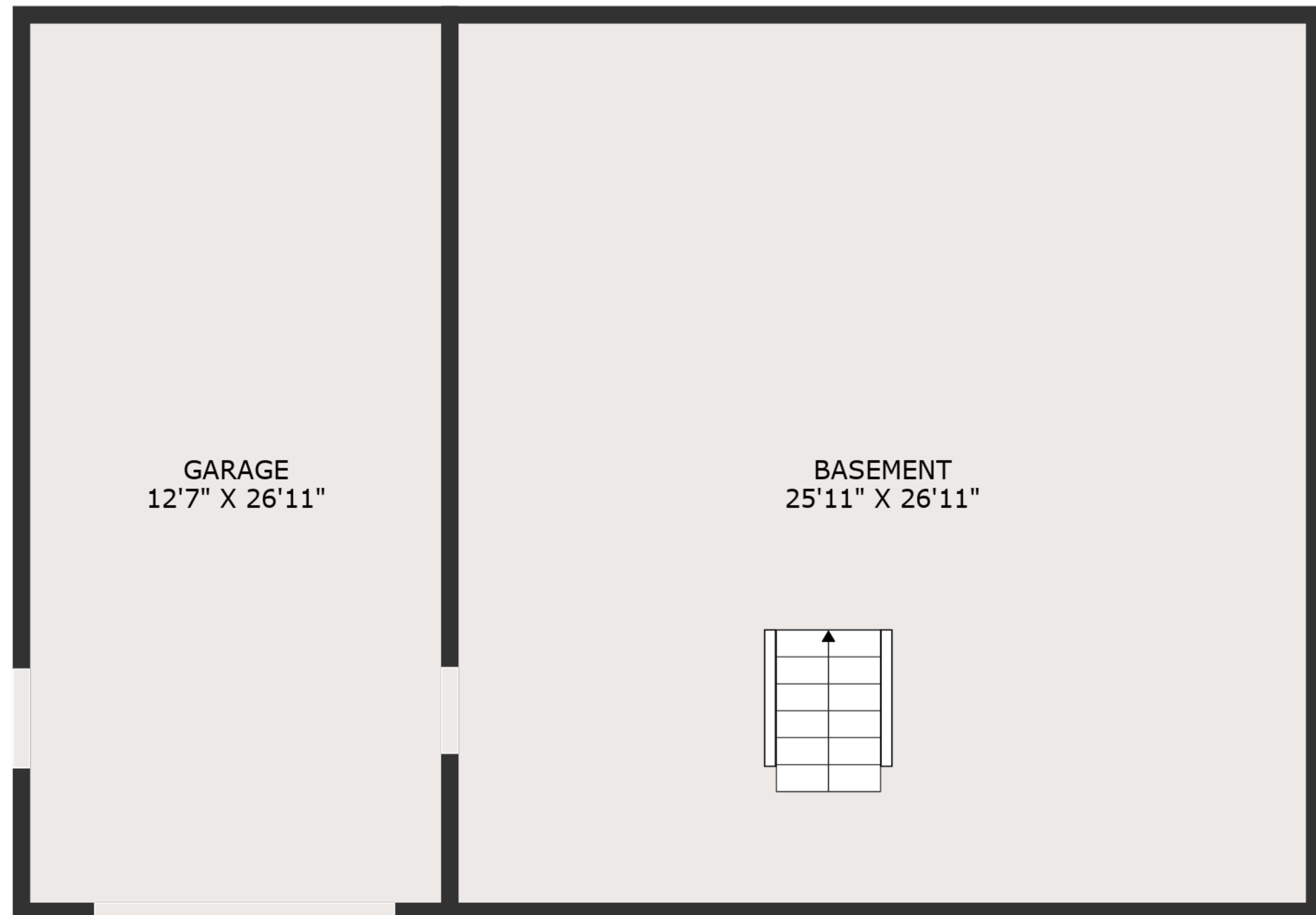
MEASUREMENTS ARE DEEMED HIGHLY RELIABLE BUT NOT GUARANTEED.



FLOOR 2



FLOOR 3



FLOOR 1

TOTAL: 1938 sq. ft
 BELOW GROUND: 0 sq. ft, FLOOR 2: 1051 sq. ft, FLOOR 3: 887 sq. ft
 EXCLUDED AREAS: BASEMENT: 698 sq. ft, GARAGE: 339 sq. ft, LOW CEILING: 53 sq. ft

MEASUREMENTS ARE DEEMED HIGHLY RELIABLE BUT NOT GUARANTEED.