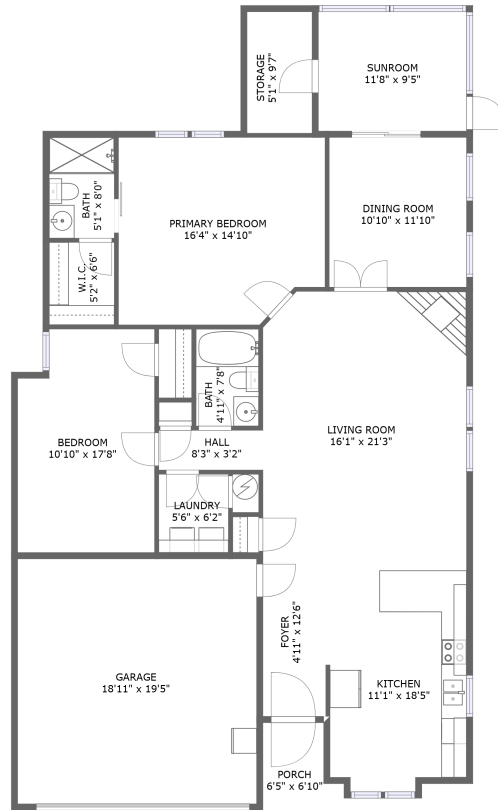



47 Cardinal Lane, Daleville, Botetourt County, Virginia, United States, 24083



FLOOR 1

Property summary


 **1** Garages

 **2** Bedrooms

 **2** Bathrooms

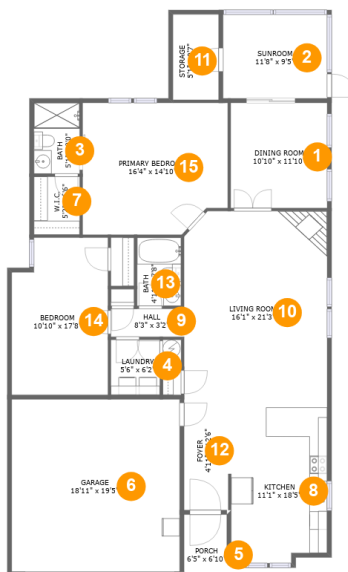
 **0** Half baths

 **1** Floors

 **1,599** Gross living area sqft

 **2,082** Total sqft

47 Cardinal Lane, Daleville, Botetourt County, Virginia, United States, 24083



Room dimensions

Floor 1

Total sqft: 2082 Living area: 1599

#		Dimensions	sqft	Counted as living area
1	Dining Room	10'10" x 11'10"	129 sq. ft	Yes
2	Room	11'8" x 9'5"	111 sq. ft	Yes
3	Bath	5'1" x 8'0"	41 sq. ft	Yes
4	Utility	5'6" x 6'2"	34 sq. ft	Yes
5	Outdoor	6'5" x 6'10"	37 sq. ft	No
6	Garage	18'11" x 19'5"	366 sq. ft	No
7	Cl	5'2" x 6'6"	34 sq. ft	Yes
8	Kitchen	11'1" x 18'5"	195 sq. ft	Yes
9	Hall	8'3" x 3'2"	26 sq. ft	Yes
10	Living Room	16'1" x 21'3"	337 sq. ft	Yes
11	Storage	5'1" x 9'7"	49 sq. ft	No

Scan captured on Wed, 18 Dec 2024 17:26:51 GMT

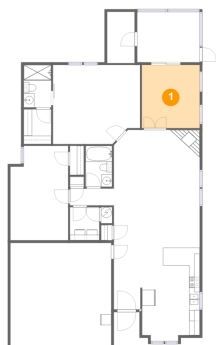
Information is calculated by Cubicasa technology deemed highly reliable but not guaranteed.

**47 Cardinal Lane, Daleville, Botetourt County, Virginia,
United States, 24083**

#		Dimensions	sqft	Counted as living area
12	Entry	4'11" x 12'6"	62 sq. ft	Yes
13	Bath	4'11" x 7'8"	38 sq. ft	Yes
14	Bedroom	10'10" x 17'8"	182 sq. ft	Yes
15	Bedroom	16'4" x 14'10"	231 sq. ft	Yes

47 Cardinal Lane, Daleville, Botetourt County, Virginia, United States, 24083

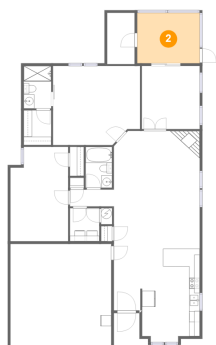
1 Floor 1 - Dining Room



Dimensions: 10'10" x 11'10"
Area: 129 sq. ft
Counted as living area: Yes

Heated: Yes
Finished: Yes
Enclosed: Yes
Contiguous: Yes
Permitted: Yes
Wet space: No
Addition: No
Conversion: No

2 Floor 1 - Room

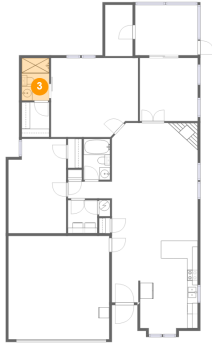


Dimensions: 11'8" x 9'5"
Area: 111 sq. ft
Counted as living area: Yes

Heated: Yes
Finished: Yes
Enclosed: Yes
Contiguous: Yes
Permitted: Yes
Wet space: No
Addition: No
Conversion: No

47 Cardinal Lane, Daleville, Botetourt County, Virginia, United States, 24083

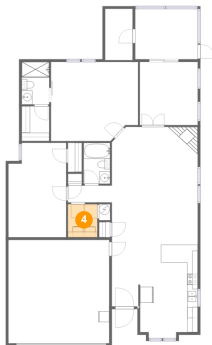
3 Floor 1 - Bath



Dimensions: 5'1" x 8'0"
Area: 41 sq. ft
Counted as living area: Yes

Heated: Yes
Finished: Yes
Enclosed: Yes
Contiguous: Yes
Permitted: Yes
Wet space: Yes
Addition: No
Conversion: No

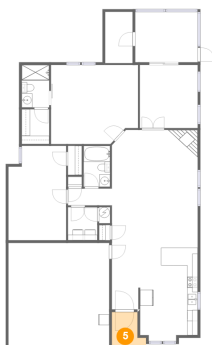
4 Floor 1 - Utility



Dimensions: 5'6" x 6'2"
Area: 34 sq. ft
Counted as living area: Yes

Heated: Yes
Finished: Yes
Enclosed: Yes
Contiguous: Yes
Permitted: Yes
Wet space: No
Addition: No
Conversion: No

5 Floor 1 - Outdoor

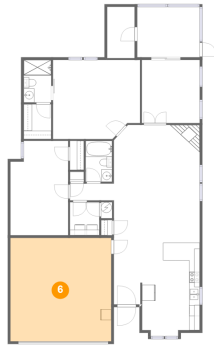


Dimensions: 6'5" x 6'10"
Area: 37 sq. ft
Counted as living area: No

Heated: No
Finished: Yes
Enclosed: No
Contiguous: Yes
Permitted: Yes
Wet space: No
Addition: No
Conversion: No

47 Cardinal Lane, Daleville, Botetourt County, Virginia, United States, 24083

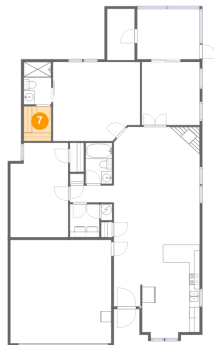
6 Floor 1 - Garage



Dimensions: 18'11" x 19'5"
Area: 366 sq. ft
Counted as living area: No

Heated: No
Finished: No
Enclosed: Yes
Contiguous: Yes
Permitted: Yes
Wet space: No
Addition: No
Conversion: No

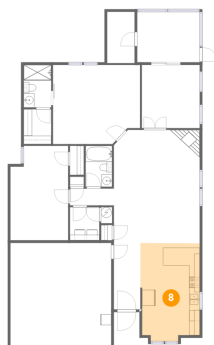
7 Floor 1 - Cl



Dimensions: 5'2" x 6'6"
Area: 34 sq. ft
Counted as living area: Yes

Heated: Yes
Finished: Yes
Enclosed: Yes
Contiguous: Yes
Permitted: Yes
Wet space: No
Addition: No
Conversion: No

8 Floor 1 - Kitchen

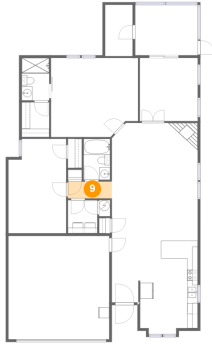


Dimensions: 11'1" x 18'5"
Area: 195 sq. ft
Counted as living area: Yes

Heated: Yes
Finished: Yes
Enclosed: Yes
Contiguous: Yes
Permitted: Yes
Wet space: No
Addition: No
Conversion: No

47 Cardinal Lane, Daleville, Botetourt County, Virginia,
United States, 24083

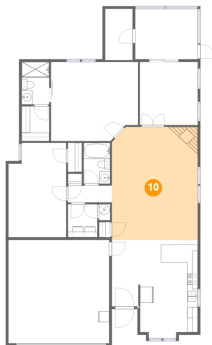
9 Floor 1 - Hall



Dimensions: 8'3" x 3'2"
Area: 26 sq. ft
Counted as living area: Yes

Heated: Yes
Finished: Yes
Enclosed: Yes
Contiguous: Yes
Permitted: Yes
Wet space: No
Addition: No
Conversion: No

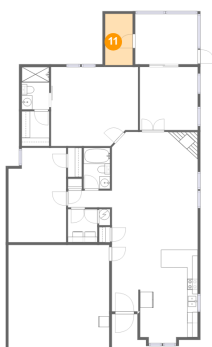
10 Floor 1 - Living Room



Dimensions: 16'1" x 21'3"
Area: 337 sq. ft
Counted as living area: Yes

Heated: Yes
Finished: Yes
Enclosed: Yes
Contiguous: Yes
Permitted: Yes
Wet space: No
Addition: No
Conversion: No

11 Floor 1 - Storage

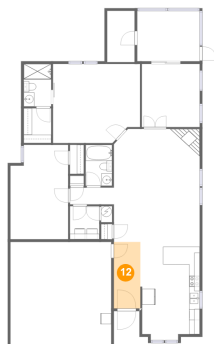


Dimensions: 5'1" x 9'7"
Area: 49 sq. ft
Counted as living area: No

Heated: No
Finished: No
Enclosed: No
Contiguous: Yes
Permitted: Yes
Wet space: No
Addition: No
Conversion: No

47 Cardinal Lane, Daleville, Botetourt County, Virginia,
United States, 24083

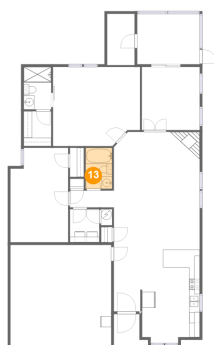
12 Floor 1 - Entry



Dimensions: 4'11" x 12'6"
Area: 62 sq. ft
Counted as living area: Yes

Heated: Yes
Finished: Yes
Enclosed: Yes
Contiguous: Yes
Permitted: Yes
Wet space: No
Addition: No
Conversion: No

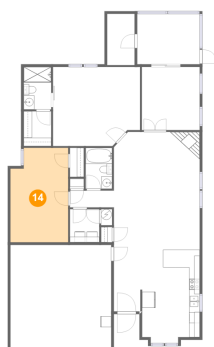
13 Floor 1 - Bath



Dimensions: 4'11" x 7'8"
Area: 38 sq. ft
Counted as living area: Yes

Heated: Yes
Finished: Yes
Enclosed: Yes
Contiguous: Yes
Permitted: Yes
Wet space: Yes
Addition: No
Conversion: No

14 Floor 1 - Bedroom

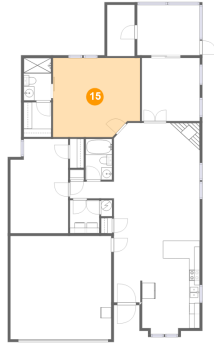


Dimensions: 10'10" x 17'8"
Area: 182 sq. ft
Counted as living area: Yes

Heated: Yes
Finished: Yes
Enclosed: Yes
Contiguous: Yes
Permitted: Yes
Wet space: No
Addition: No
Conversion: No

**47 Cardinal Lane, Daleville, Botetourt County, Virginia,
United States, 24083**

15 Floor 1 - Bedroom



Dimensions: 16'4" x 14'10"
Area: 231 sq. ft
Counted as living area: Yes

Heated: Yes
Finished: Yes
Enclosed: Yes
Contiguous: Yes
Permitted: Yes
Wet space: No
Addition: No
Conversion: No