


Home report


72 Old Danielson Pike, Foster, Rhode Island 02825, United States




Property summary




0
Garages



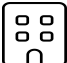
4
Bedrooms




1
Bathrooms




1
Half baths



3
Floors



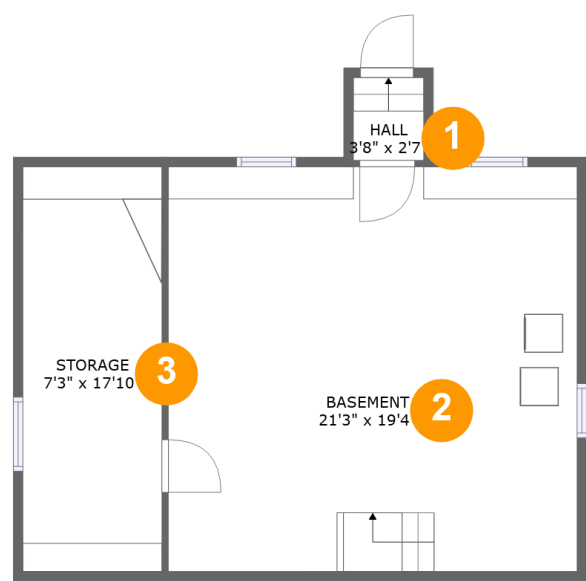
1,472
Gross living
area sqft



2,424
Total sqft

Home report

72 Old Danielson Pike, Foster, Rhode Island 02825, United States



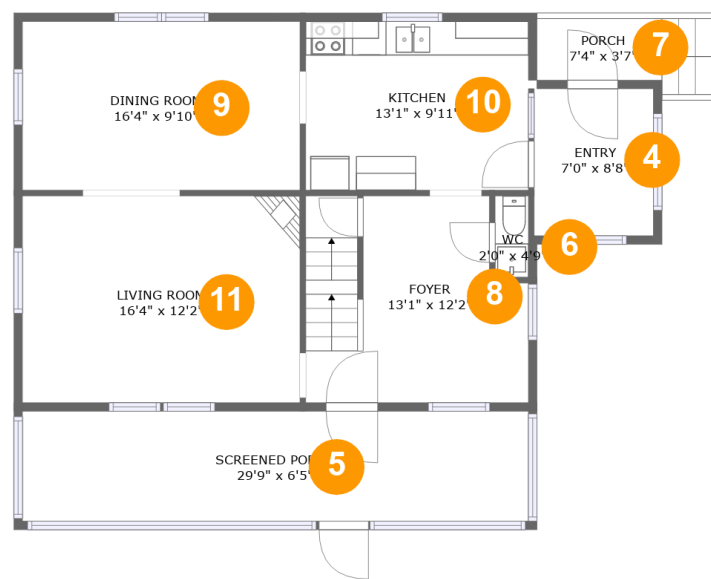
Room dimensions

Floor 1 Total sqft: 676 Living area: 0

#		Dimensions	sqft	Counted as living area
1	Hall	3'8" x 2'7"	16 sq. ft	No
2	Basement	21'3" x 19'4"	446 sq. ft	No
3	Storage	7'3" x 17'10"	152 sq. ft	No

Home report

72 Old Danielson Pike, Foster, Rhode Island 02825, United States



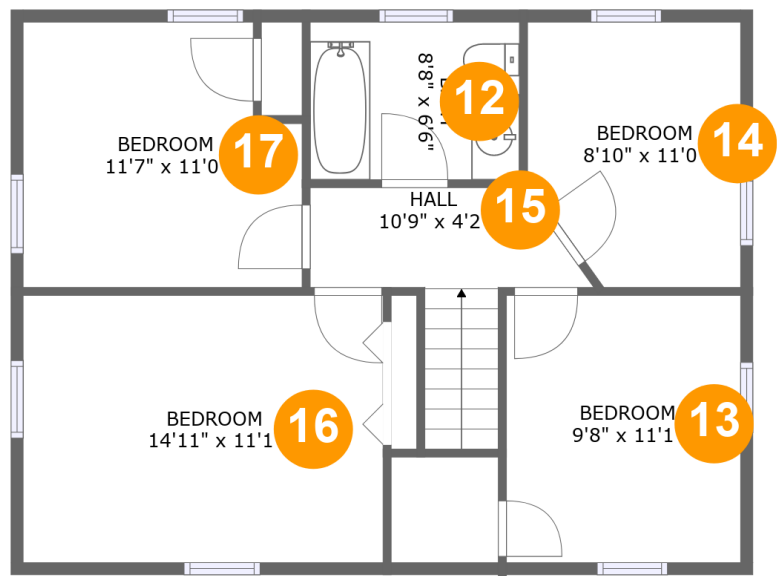
Room dimensions

Floor 2 Total sqft: 1030 Living area: 789

#		Dimensions	sqft	Counted as living area
4	Entry	7'0" x 8'8"	61 sq. ft	Yes
5	Screened Porch	29'9" x 6'5"	192 sq. ft	No
6	WC	2'0" x 4'9"	9 sq. ft	Yes
7	Porch	7'4" x 3'7"	27 sq. ft	No
8	Foyer	13'1" x 12'2"	145 sq. ft	Yes
9	Dining Room	16'4" x 9'10"	161 sq. ft	Yes
10	Kitchen	13'1" x 9'11"	130 sq. ft	Yes
11	Living Room	16'4" x 12'2"	198 sq. ft	Yes

Home report

72 Old Danielson Pike, Foster, Rhode Island 02825, United States



Room dimensions

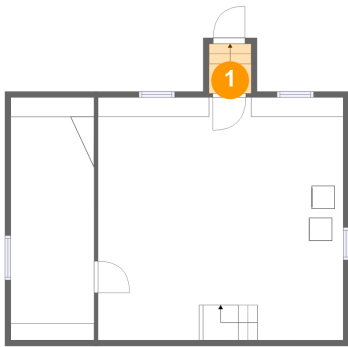
Floor 3 Total sqft: 718 Living area: 683

#		Dimensions	sqft	Counted as living area
12	Bath	8'8" x 6'6"	57 sq. ft	Yes
13	Bedroom	9'8" x 11'1"	102 sq. ft	Yes
14	Bedroom	8'10" x 11'0"	84 sq. ft	Yes
15	Hall	10'9" x 4'2"	63 sq. ft	Yes
16	Bedroom	14'11" x 11'1"	159 sq. ft	Yes
17	Bedroom	11'7" x 11'0"	113 sq. ft	Yes

Home report

72 Old Danielson Pike, Foster, Rhode Island 02825, United States

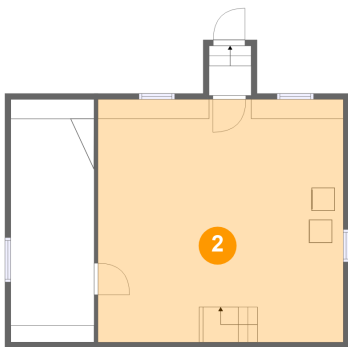
1 Floor 1 - Hall



Dimensions: 3'8" x 2'7"
Area: 16 sq. ft
Counted as living area: No

Heated: Yes
Finished: No
Enclosed: Yes
Contiguous: Yes
Permitted: Yes
Wet space: No
Addition: No
Conversion: No

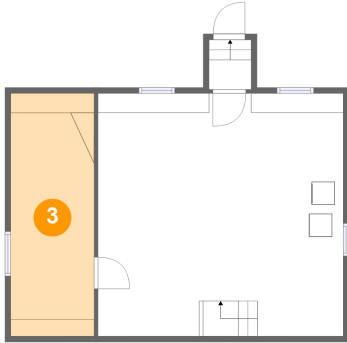
2 Floor 1 - Basement



Dimensions: 21'3" x 19'4"
Area: 446 sq. ft
Counted as living area: No

Heated: Yes
Finished: No
Enclosed: Yes
Contiguous: Yes
Permitted: Yes
Wet space: No
Addition: No
Conversion: No

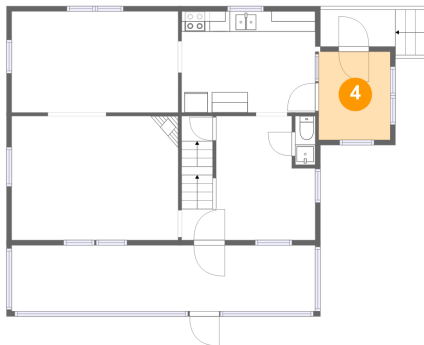
3 Floor 1 - Storage



Dimensions: 7'3" x 17'10"
Area: 152 sq. ft
Counted as living area: No

Heated: No
Finished: No
Enclosed: No
Contiguous: Yes
Permitted: Yes
Wet space: No
Addition: No
Conversion: No

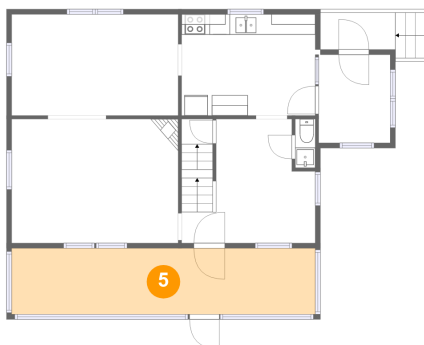
4 Floor 2 - Entry



Dimensions: 7'0" x 8'8"
Area: 61 sq. ft
Counted as living area: Yes

Heated: Yes
Finished: Yes
Enclosed: Yes
Contiguous: Yes
Permitted: Yes
Wet space: No
Addition: No
Conversion: No

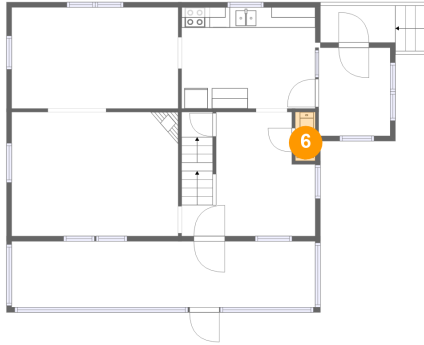
5 Floor 2 - Screened Porch



Dimensions: 29'9" x 6'5"
Area: 192 sq. ft
Counted as living area: No

Heated: No
Finished: Yes
Enclosed: No
Contiguous: Yes
Permitted: Yes
Wet space: No
Addition: No
Conversion: No

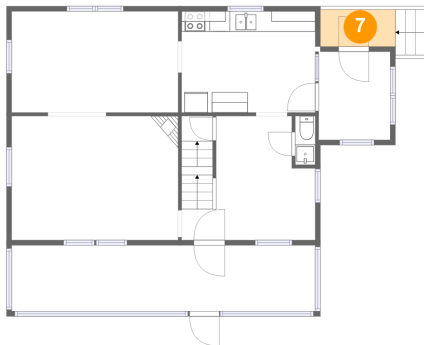
6 Floor 2 - WC



Dimensions: 2'0" x 4'9"
Area: 9 sq. ft
Counted as living area: Yes

Heated: Yes
Finished: Yes
Enclosed: Yes
Contiguous: Yes
Permitted: Yes
Wet space: Yes
Addition: No
Conversion: No

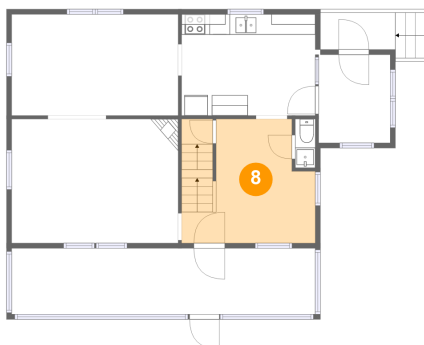
7 Floor 2 - Porch



Dimensions: 7'4" x 3'7"
Area: 27 sq. ft
Counted as living area: No

Heated: No
Finished: Yes
Enclosed: No
Contiguous: Yes
Permitted: Yes
Wet space: No
Addition: No
Conversion: No

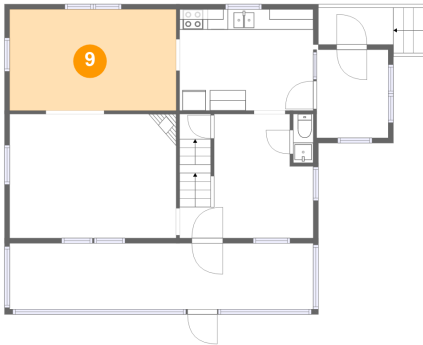
8 Floor 2 - Foyer



Dimensions: 13'1" x 12'2"
Area: 145 sq. ft
Counted as living area: Yes

Heated: Yes
Finished: Yes
Enclosed: Yes
Contiguous: Yes
Permitted: Yes
Wet space: No
Addition: No
Conversion: No

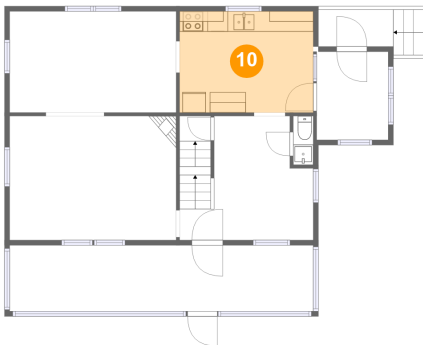
9 Floor 2 - Dining Room



Dimensions: 16'4" x 9'10"
Area: 161 sq. ft
Counted as living area: Yes

Heated: Yes
Finished: Yes
Enclosed: Yes
Contiguous: Yes
Permitted: Yes
Wet space: No
Addition: No
Conversion: No

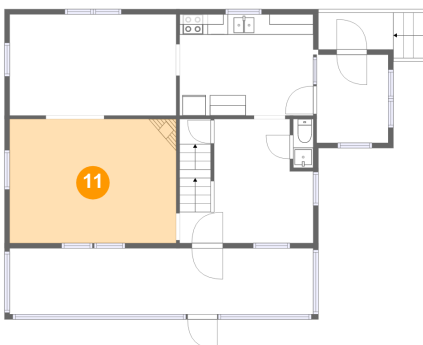
10 Floor 2 - Kitchen



Dimensions: 13'1" x 9'11"
Area: 130 sq. ft
Counted as living area: Yes

Heated: Yes
Finished: Yes
Enclosed: Yes
Contiguous: Yes
Permitted: Yes
Wet space: No
Addition: No
Conversion: No

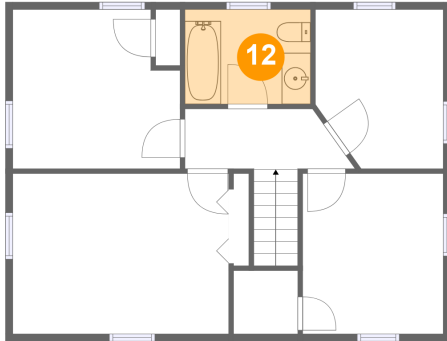
11 Floor 2 - Living Room



Dimensions: 16'4" x 12'2"
Area: 198 sq. ft
Counted as living area: Yes

Heated: Yes
Finished: Yes
Enclosed: Yes
Contiguous: Yes
Permitted: Yes
Wet space: No
Addition: No
Conversion: No

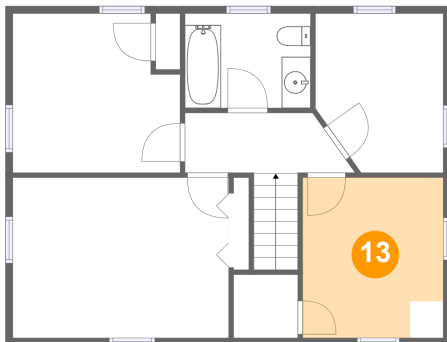
12 Floor 3 - Bath



Dimensions: 8'8" x 6'6"
Area: 57 sq. ft
Counted as living area: Yes

Heated: Yes
Finished: Yes
Enclosed: Yes
Contiguous: Yes
Permitted: Yes
Wet space: Yes
Addition: No
Conversion: No

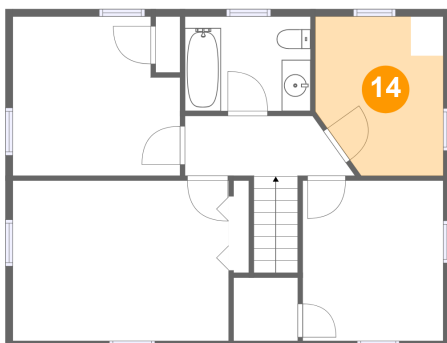
13 Floor 3 - Bedroom



Dimensions: 9'8" x 11'1"
Area: 102 sq. ft
Counted as living area: Yes

Heated: Yes
Finished: Yes
Enclosed: Yes
Contiguous: Yes
Permitted: Yes
Wet space: No
Addition: No
Conversion: No

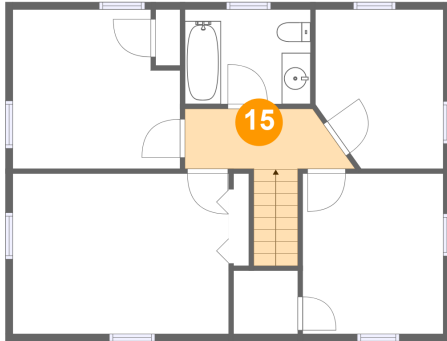
14 Floor 3 - Bedroom



Dimensions: 8'10" x 11'0"
Area: 84 sq. ft
Counted as living area: Yes

Heated: Yes
Finished: Yes
Enclosed: Yes
Contiguous: Yes
Permitted: Yes
Wet space: No
Addition: No
Conversion: No

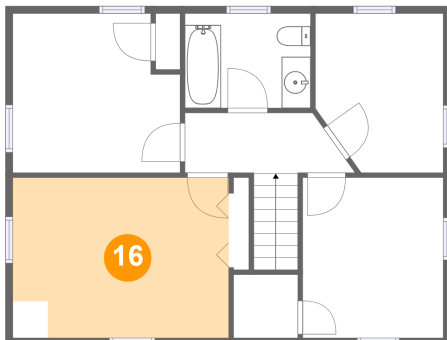
15 Floor 3 - Hall



Dimensions: 10'9" x 4'2"
Area: 63 sq. ft
Counted as living area: Yes

Heated: Yes
Finished: Yes
Enclosed: Yes
Contiguous: Yes
Permitted: Yes
Wet space: No
Addition: No
Conversion: No

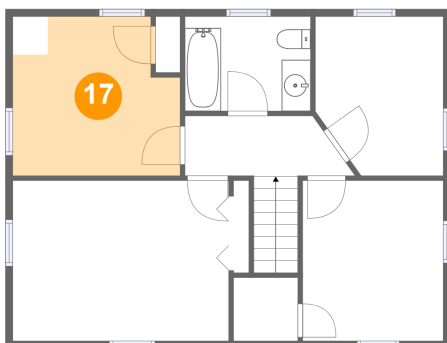
16 Floor 3 - Bedroom



Dimensions: 14'11" x 11'1"
Area: 159 sq. ft
Counted as living area: Yes

Heated: Yes
Finished: Yes
Enclosed: Yes
Contiguous: Yes
Permitted: Yes
Wet space: No
Addition: No
Conversion: No

17 Floor 3 - Bedroom



Dimensions: 11'7" x 11'0"
Area: 113 sq. ft
Counted as living area: Yes

Heated: Yes
Finished: Yes
Enclosed: Yes
Contiguous: Yes
Permitted: Yes
Wet space: No
Addition: No
Conversion: No