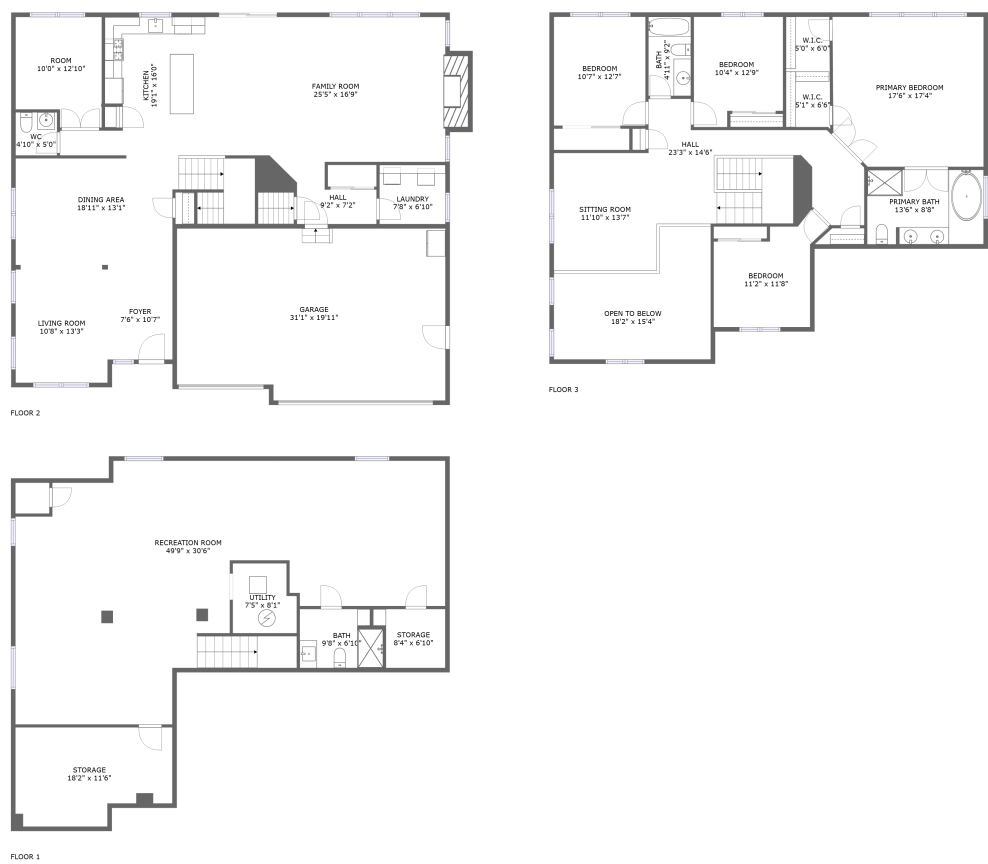


Home report

300 Monument Road, Elgin, Kane County, Illinois, United States, 60124



Total Area: 4128 sq. ft
Below Ground: 1182 sq. ft, Floor 2: 1508 sq. ft, Floor 3: 1438 sq. ft
Excluded: Storage 238 sq. ft, Utility 56 sq. ft, Garage 597 sq. ft, Fireplace 25 sq. ft, Open to below 220 sq. ft, Walls: 300 sq. ft

Property summary

**3** Floors

**4** Bedrooms

**3** Bathrooms

Home report

**300 Monument Road, Elgin, Kane County, Illinois, United States,
60124**



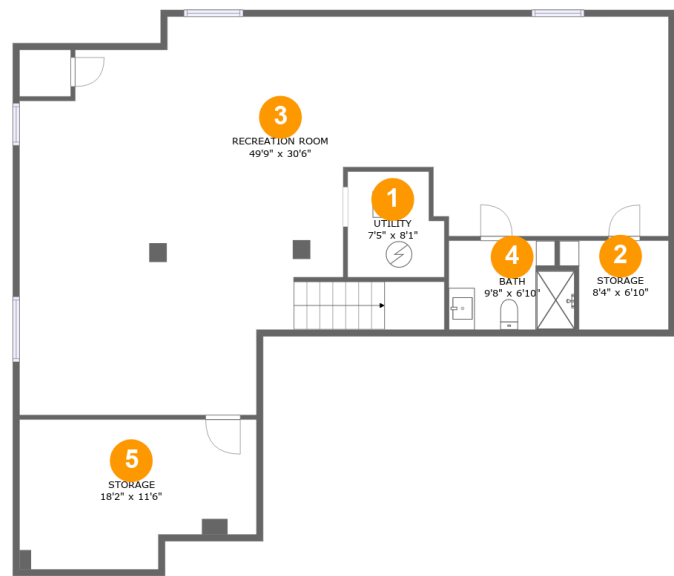
1
Half baths



1
Garages

Home report

300 Monument Road, Elgin, Kane County, Illinois, United States, 60124



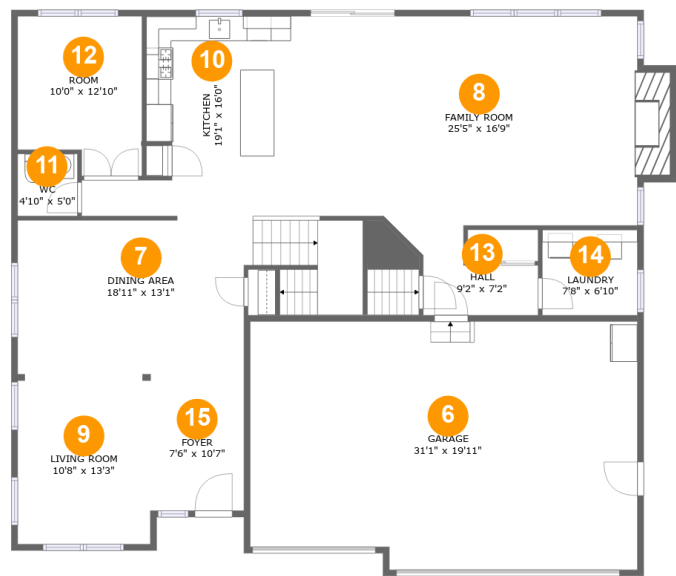
Room dimensions

Floor 1 Below ground Total:1182sqft Excluded: 294sqft

#		Max Dimensions	sqft	Included
1	Utility	7'5" x 8'1"	56 sq. ft	No
2	Storage	8'4" x 6'10"	50 sq. ft	No
3	Recreation Room	49'9" x 30'6"	1075 sq. ft	Yes
4	Bath	9'8" x 6'10"	62 sq. ft	Yes
5	Storage	18'2" x 11'6"	188 sq. ft	No

Home report

300 Monument Road, Elgin, Kane County, Illinois, United States, 60124



Room dimensions

Floor 2

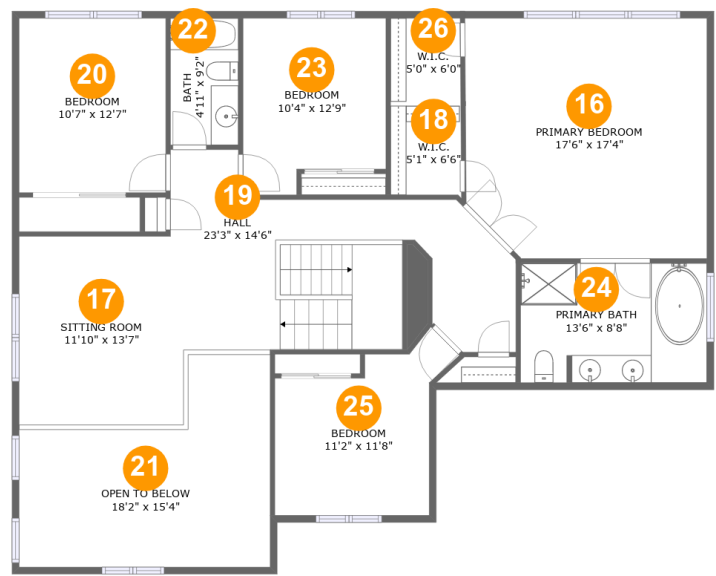
Total:1508sqft

Excluded: 622sqft

#		Max Dimensions	sqft	Included
6	Garage	31'1" x 19'11"	597 sq. ft	No
7	Dining Area	18'11" x 13'1"	295 sq. ft	Yes
8	Family Room	25'5" x 16'9"	445 sq. ft	Yes
9	Living Room	10'8" x 13'3"	141 sq. ft	Yes
10	Kitchen	19'1" x 16'0"	232 sq. ft	Yes
11	WC	4'10" x 5'0"	24 sq. ft	Yes
12	Room	10'0" x 12'10"	117 sq. ft	Yes
13	Hall	9'2" x 7'2"	50 sq. ft	Yes
14	Laundry	7'8" x 6'10"	52 sq. ft	Yes
15	Foyer	7'6" x 10'7"	79 sq. ft	Yes

Home report

300 Monument Road, Elgin, Kane County, Illinois, United States, 60124

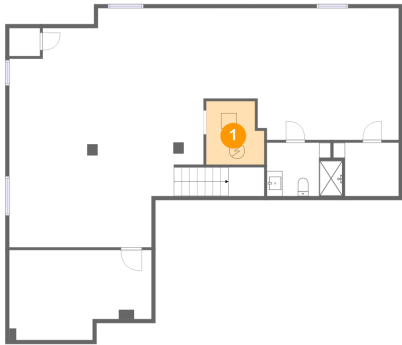


Room dimensions

Floor 3 Total:1438sqft Excluded: 220sqft

#		Max Dimensions	sqft	Included
16	Primary Bedroom	17'6" x 17'4"	295 sq. ft	Yes
17	Sitting Room	11'10" x 13'7"	162 sq. ft	Yes
18	W.I.C.	5'1" x 6'6"	33 sq. ft	Yes
19	Hall	23'3" x 14'6"	254 sq. ft	Yes
20	Bedroom	10'7" x 12'7"	134 sq. ft	Yes
21	Open To Below	18'2" x 15'4"	220 sq. ft	No
22	Bath	4'11" x 9'2"	45 sq. ft	Yes
23	Bedroom	10'4" x 12'9"	120 sq. ft	Yes
24	Primary Bath	13'6" x 8'8"	116 sq. ft	Yes
25	Bedroom	11'2" x 11'8"	124 sq. ft	Yes
26	W.I.C.	5'0" x 6'0"	30 sq. ft	Yes

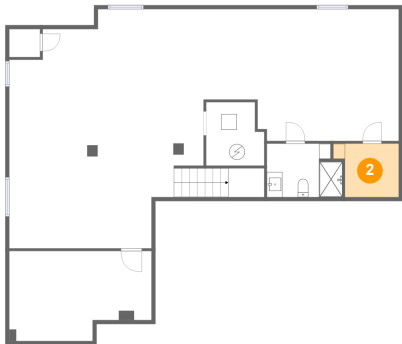
1 Floor 1 - Utility



Max Dimensions: 7'5" x 8'1"
Calculated Area: 56 sq. ft
Included: No

Heated: Yes
Finished: No
Enclosed: Yes
Contiguous: Yes
Permitted: Yes
Wet space: No
Addition: No
Conversion: No

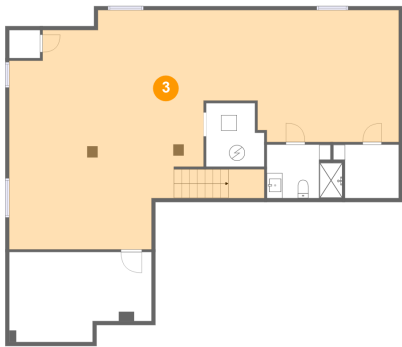
2 Floor 1 - Storage



Max Dimensions: 8'4" x 6'10"
Calculated Area: 50 sq. ft
Included: No

Heated: No
Finished: No
Enclosed: No
Contiguous: Yes
Permitted: Yes
Wet space: No
Addition: No
Conversion: No

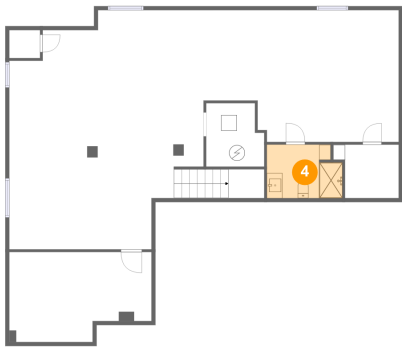
3 Floor 1 - Recreation Room



Max Dimensions: 49'9" x 30'6"
Calculated Area: 1075 sq. ft
Included: Yes

Heated: Yes
Finished: Yes
Enclosed: Yes
Contiguous: Yes
Permitted: Yes
Wet space: No
Addition: No
Conversion: No

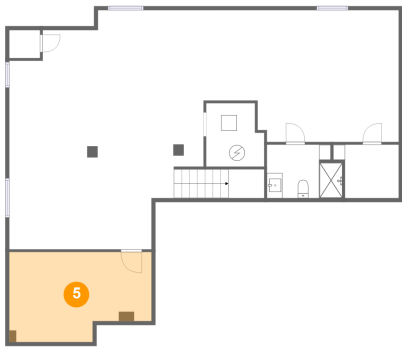
4 Floor 1 - Bath



Max Dimensions: 9'8" x 6'10"
Calculated Area: 62 sq. ft
Included: Yes

Heated: Yes
Finished: Yes
Enclosed: Yes
Contiguous: Yes
Permitted: Yes
Wet space: Yes
Addition: No
Conversion: No

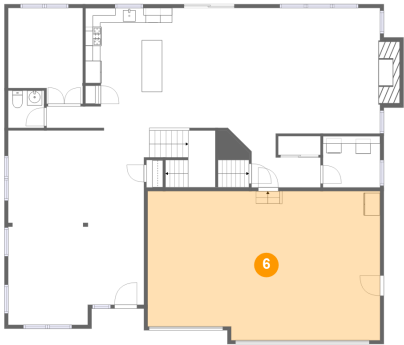
5 Floor 1 - Storage



Max Dimensions: 18'2" x 11'6"
Calculated Area: 188 sq. ft
Included: No

Heated: No
Finished: No
Enclosed: No
Contiguous: Yes
Permitted: Yes
Wet space: No
Addition: No
Conversion: No

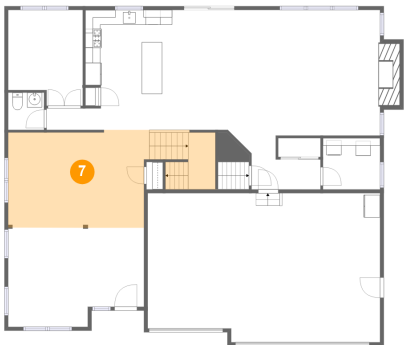
6 Floor 2 - Garage



Max Dimensions: 31'1" x 19'11"
Calculated Area: 597 sq. ft
Included: No

Heated: No
Finished: No
Enclosed: Yes
Contiguous: Yes
Permitted: Yes
Wet space: No
Addition: No
Conversion: No

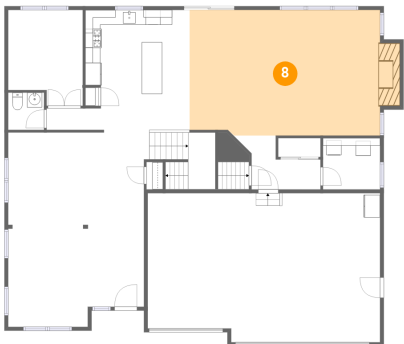
7 Floor 2 - Dining Area



Max Dimensions: 18'11" x 13'1"
Calculated Area: 295 sq. ft
Included: Yes

Heated: Yes
Finished: Yes
Enclosed: Yes
Contiguous: Yes
Permitted: Yes
Wet space: No
Addition: No
Conversion: No

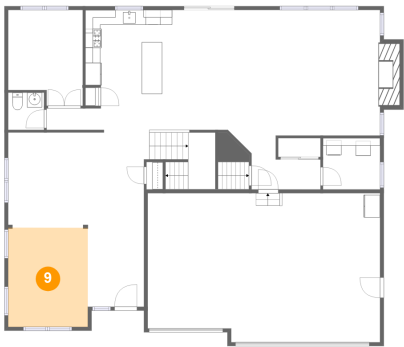
8 Floor 2 - Family Room



Max Dimensions: 25'5" x 16'9"
Calculated Area: 445 sq. ft
Included: Yes

Heated: Yes
Finished: Yes
Enclosed: Yes
Contiguous: Yes
Permitted: Yes
Wet space: No
Addition: No
Conversion: No

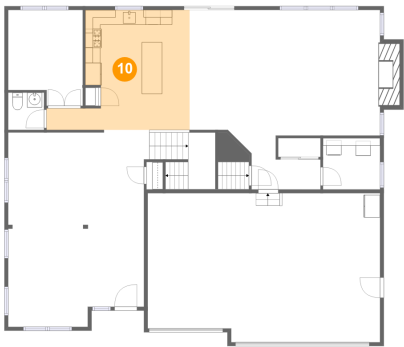
9 Floor 2 - Living Room



Max Dimensions: 10'8" x 13'3"
Calculated Area: 141 sq. ft
Included: Yes

Heated: Yes
Finished: Yes
Enclosed: Yes
Contiguous: Yes
Permitted: Yes
Wet space: No
Addition: No
Conversion: No

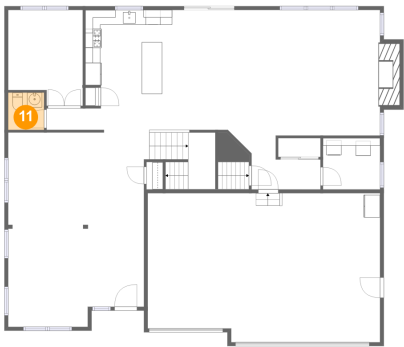
10 Floor 2 - Kitchen



Max Dimensions: 19'1" x 16'0"
Calculated Area: 232 sq. ft
Included: Yes

Heated: Yes
Finished: Yes
Enclosed: Yes
Contiguous: Yes
Permitted: Yes
Wet space: No
Addition: No
Conversion: No

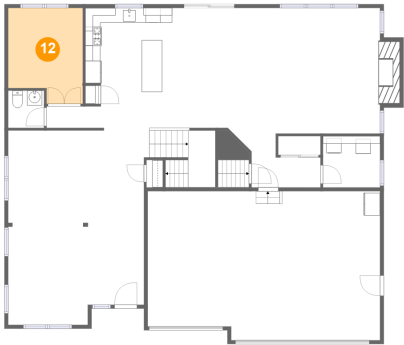
11 Floor 2 - WC



Max Dimensions: 4'10" x 5'0"
Calculated Area: 24 sq. ft
Included: Yes

Heated: Yes
Finished: Yes
Enclosed: Yes
Contiguous: Yes
Permitted: Yes
Wet space: Yes
Addition: No
Conversion: No

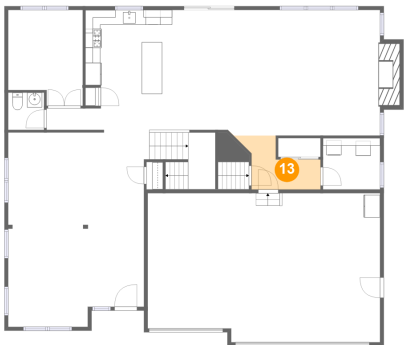
12 Floor 2 - Room



Max Dimensions: 10'0" x 12'10"
Calculated Area: 117 sq. ft
Included: Yes

Heated: Yes
Finished: Yes
Enclosed: Yes
Contiguous: Yes
Permitted: Yes
Wet space: No
Addition: No
Conversion: No

13 Floor 2 - Hall



Max Dimensions: 9'2" x 7'2"
Calculated Area: 50 sq. ft
Included: Yes

Heated: Yes
Finished: Yes
Enclosed: Yes
Contiguous: Yes
Permitted: Yes
Wet space: No
Addition: No
Conversion: No

14 Floor 2 - Laundry



Max Dimensions: 7'8" x 6'10"
Calculated Area: 52 sq. ft
Included: Yes

Heated: Yes
Finished: Yes
Enclosed: Yes
Contiguous: Yes
Permitted: Yes
Wet space: No
Addition: No
Conversion: No

300 Monument Road, Elgin, Kane County, Illinois, United States,
60124

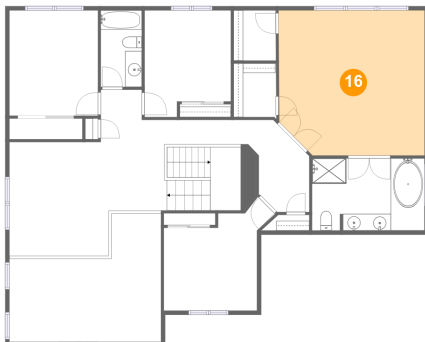
15 Floor 2 - Foyer



Max Dimensions: 7'6" x 10'7"
Calculated Area: 79 sq. ft
Included: Yes

Heated: Yes
Finished: Yes
Enclosed: Yes
Contiguous: Yes
Permitted: Yes
Wet space: No
Addition: No
Conversion: No

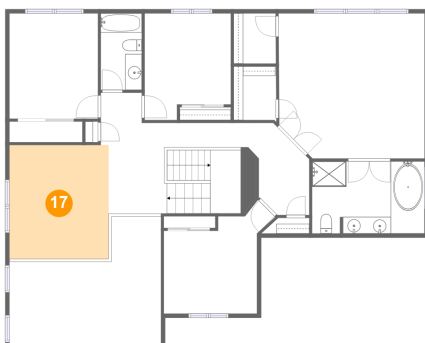
16 Floor 3 - Primary Bedroom



Max Dimensions: 17'6" x 17'4"
Calculated Area: 295 sq. ft
Included: Yes

Heated: Yes
Finished: Yes
Enclosed: Yes
Contiguous: Yes
Permitted: Yes
Wet space: No
Addition: No
Conversion: No

17 Floor 3 - Sitting Room



Max Dimensions: 11'10" x 13'7"
Calculated Area: 162 sq. ft
Included: Yes

Heated: Yes
Finished: Yes
Enclosed: Yes
Contiguous: Yes
Permitted: Yes
Wet space: No
Addition: No
Conversion: No

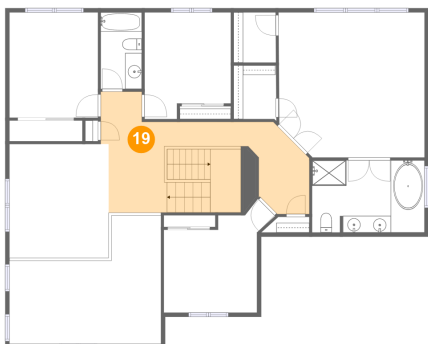
18 Floor 3 - W.I.C.



Max Dimensions: 5'1" x 6'6"
Calculated Area: 33 sq. ft
Included: Yes

Heated: Yes
Finished: Yes
Enclosed: Yes
Contiguous: Yes
Permitted: Yes
Wet space: No
Addition: No
Conversion: No

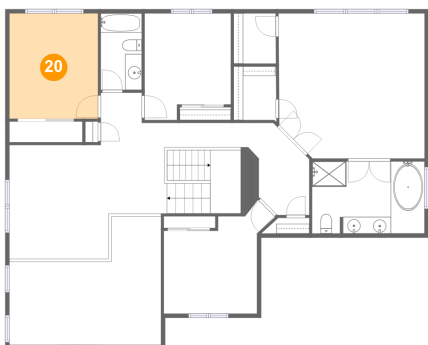
19 Floor 3 - Hall



Max Dimensions: 23'3" x 14'6"
Calculated Area: 254 sq. ft
Included: Yes

Heated: Yes
Finished: Yes
Enclosed: Yes
Contiguous: Yes
Permitted: Yes
Wet space: No
Addition: No
Conversion: No

20 Floor 3 - Bedroom



Max Dimensions: 10'7" x 12'7"
Calculated Area: 134 sq. ft
Included: Yes

Heated: Yes
Finished: Yes
Enclosed: Yes
Contiguous: Yes
Permitted: Yes
Wet space: No
Addition: No
Conversion: No

21 Floor 3 - Open To Below



Max Dimensions: 18'2" x 15'4"
Calculated Area: 220 sq. ft
Included: No

Heated: No
Finished: No
Enclosed: No
Contiguous: Yes
Permitted: No
Wet space: No
Addition: No
Conversion: No

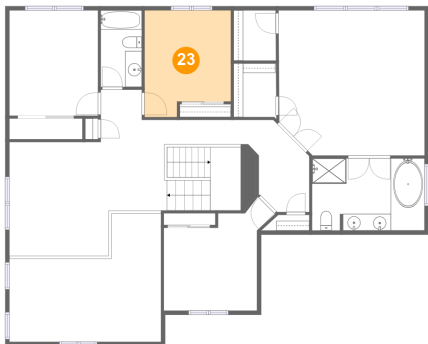
22 Floor 3 - Bath



Max Dimensions: 4'11" x 9'2"
Calculated Area: 45 sq. ft
Included: Yes

Heated: Yes
Finished: Yes
Enclosed: Yes
Contiguous: Yes
Permitted: Yes
Wet space: Yes
Addition: No
Conversion: No

23 Floor 3 - Bedroom

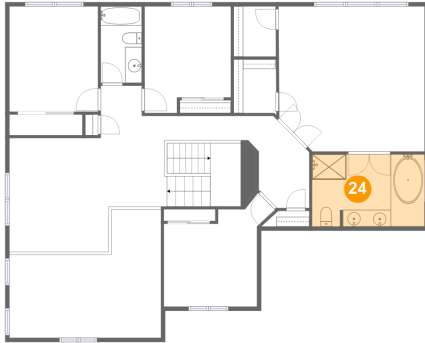


Max Dimensions: 10'4" x 12'9"
Calculated Area: 120 sq. ft
Included: Yes

Heated: Yes
Finished: Yes
Enclosed: Yes
Contiguous: Yes
Permitted: Yes
Wet space: No
Addition: No
Conversion: No

300 Monument Road, Elgin, Kane County, Illinois, United States,
60124

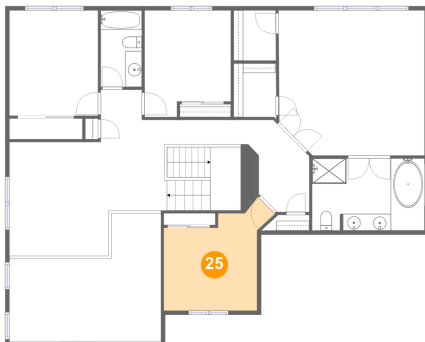
24 Floor 3 - Primary Bath



Max Dimensions: 13'6" x 8'8"
Calculated Area: 116 sq. ft
Included: Yes

Heated: Yes
Finished: Yes
Enclosed: Yes
Contiguous: Yes
Permitted: Yes
Wet space: Yes
Addition: No
Conversion: No

25 Floor 3 - Bedroom



Max Dimensions: 11'2" x 11'8"
Calculated Area: 124 sq. ft
Included: Yes

Heated: Yes
Finished: Yes
Enclosed: Yes
Contiguous: Yes
Permitted: Yes
Wet space: No
Addition: No
Conversion: No

26 Floor 3 - W.I.C.



Max Dimensions: 5'0" x 6'0"
Calculated Area: 30 sq. ft
Included: Yes

Heated: Yes
Finished: Yes
Enclosed: Yes
Contiguous: Yes
Permitted: Yes
Wet space: No
Addition: No
Conversion: No