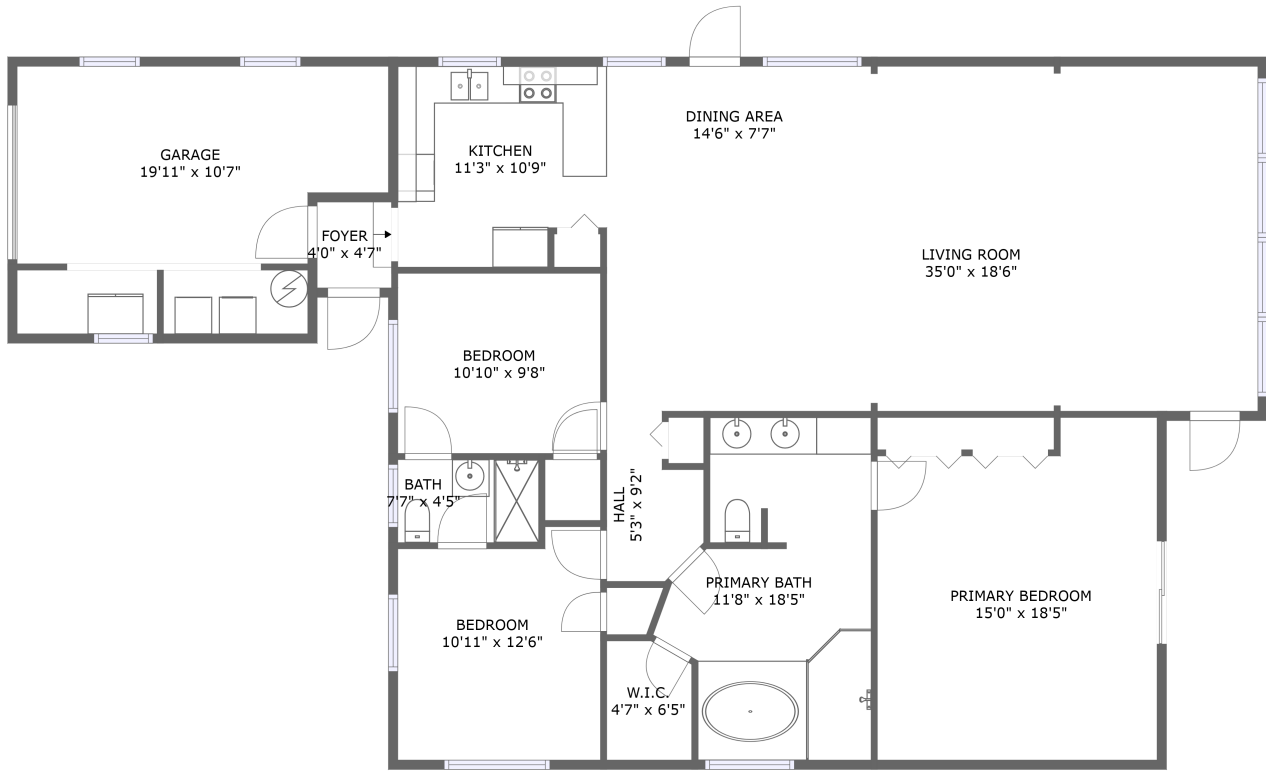


17043 Dolphin Drive, North Redington Beach, Pinellas County, Florida, United States, 33708



FLOOR 1

Property Summary



1 floors



3 bedrooms



2 bathrooms



2,010 total sqft

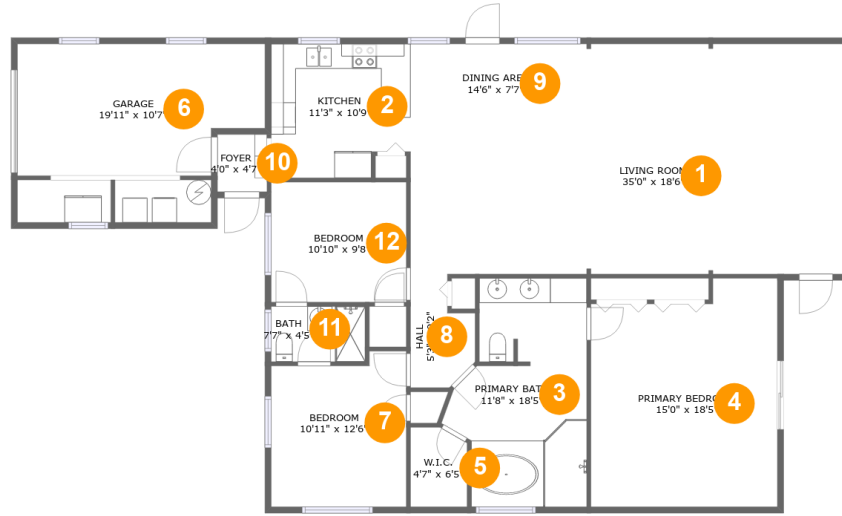


1 garages



1,729 Gross Living Area sqft

**17043 Dolphin Drive, North Redington Beach,
Pinellas County, Florida, United States, 33708**



Room Dimensions

Floor 1

Total sqft: 2010

Living area: 1729

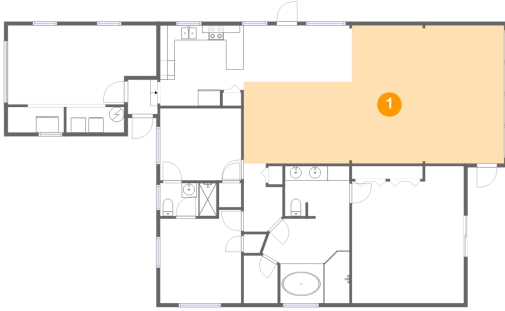
#	Room name	Dimensions	Area (sqft)	Counted as Living Area
1	Living Room	35'0" x 18'6"	538 sq. ft	Yes
2	Kitchen	11'3" x 10'9"	114 sq. ft	Yes
3	Primary Bath	11'8" x 18'5"	172 sq. ft	Yes
4	Primary Bedroom	15'0" x 18'5"	256 sq. ft	Yes
5	W.i.c.	4'7" x 6'5"	28 sq. ft	Yes
6	Garage	19'11" x 10'7"	195 sq. ft	No
7	Bedroom	10'11" x 12'6"	127 sq. ft	Yes
8	Hall	5'3" x 9'2"	38 sq. ft	Yes
9	Dining Area	14'6" x 7'7"	110 sq. ft	Yes
10	Foyer	4'0" x 4'7"	18 sq. ft	Yes
11	Bath	7'7" x 4'5"	34 sq. ft	Yes

**17043 Dolphin Drive, North Redington Beach,
Pinellas County, Florida, United States, 33708**

#	Room name	Dimensions	Area (sqft)	Counted as Living Area
12	Bedroom	10'10" x 9'8"	105 sq. ft	Yes

17043 Dolphin Drive, North Redington Beach, Pinellas County, Florida, United States, 33708

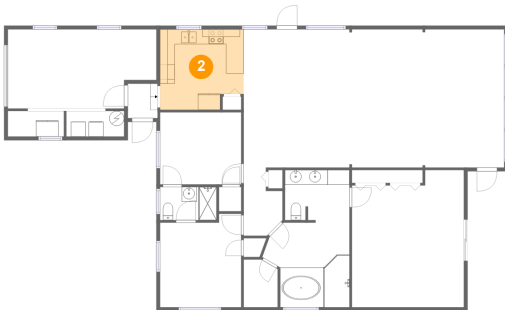
1 Floor 1 - Living Room



Dimensions: 35'0" x 18'6"
Area: 538 sq. ft
Counted as Living Area:
Yes

Heated: Yes
Finished: Yes
Enclosed: Yes
Contiguous:
Yes
Permitted: Yes
Wet Space: No
Addition: No
Conversion: No

2 Floor 1 - Kitchen

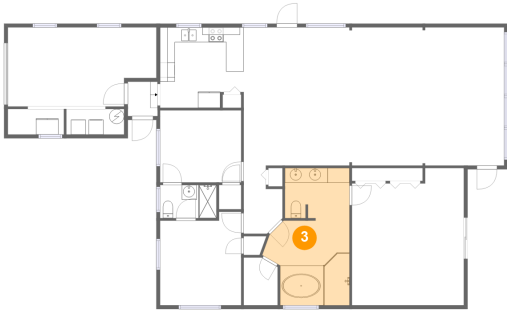


Dimensions: 11'3" x 10'9"
Area: 114 sq. ft
Counted as Living Area:
Yes

Heated: Yes
Finished: Yes
Enclosed: Yes
Contiguous:
Yes
Permitted: Yes
Wet Space: No
Addition: No
Conversion: No

**17043 Dolphin Drive, North Redington Beach,
Pinellas County, Florida, United States, 33708**

3 Floor 1 - Primary Bath



Dimensions: 11'8" x 18'5"
Area: 172 sq. ft
Counted as Living Area:
Yes

Heated: Yes
Finished: Yes
Enclosed: Yes
Contiguous:
Yes
Permitted: Yes
Wet Space: Yes
Addition: No
Conversion: No

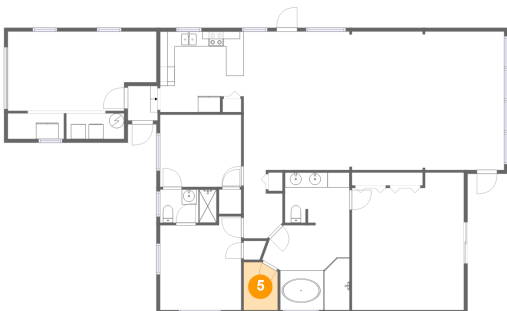
4 Floor 1 - Primary Bedroom



Dimensions: 15'0" x 18'5"
Area: 256 sq. ft
Counted as Living Area:
Yes

Heated: Yes
Finished: Yes
Enclosed: Yes
Contiguous:
Yes
Permitted: Yes
Wet Space: No
Addition: No
Conversion: No

5 Floor 1 - W.i.c.

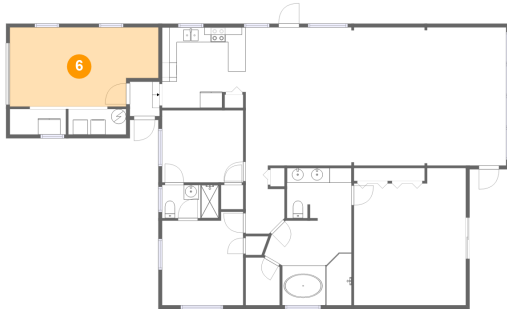


Dimensions: 4'7" x 6'5"
Area: 28 sq. ft
Counted as Living Area:
Yes

Heated: Yes
Finished: Yes
Enclosed: Yes
Contiguous:
Yes
Permitted: Yes
Wet Space: No
Addition: No
Conversion: No

17043 Dolphin Drive, North Redington Beach, Pinellas County, Florida, United States, 33708

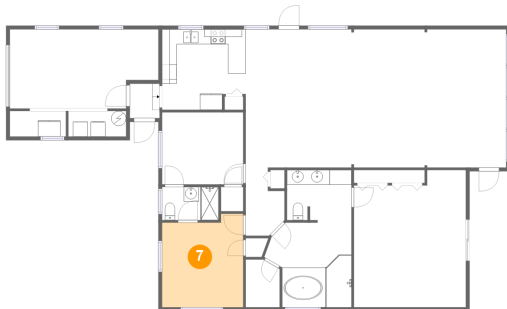
6 Floor 1 - Garage



Dimensions: 19'11" x 10'7"
Area: 195 sq. ft
Counted as Living Area: No

Heated: No
Finished: No
Enclosed: Yes
Contiguous: Yes
Permitted: Yes
Wet Space: No
Addition: No
Conversion: No

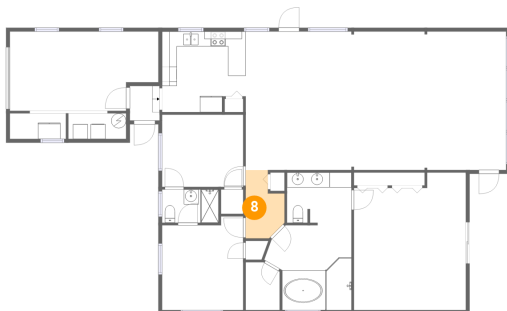
7 Floor 1 - Bedroom



Dimensions: 10'11" x 12'6"
Area: 127 sq. ft
Counted as Living Area:
Yes

Heated: Yes
Finished: Yes
Enclosed: Yes
Contiguous:
Yes
Permitted: Yes
Wet Space: No
Addition: No
Conversion: No

8 Floor 1 - Hall

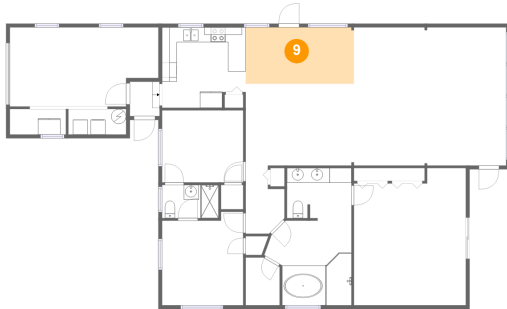


Dimensions: 5'3" x 9'2"
Area: 38 sq. ft
Counted as Living Area:
Yes

Heated: Yes
Finished: Yes
Enclosed: Yes
Contiguous:
Yes
Permitted: Yes
Wet Space: No
Addition: No
Conversion: No

17043 Dolphin Drive, North Redington Beach, Pinellas County, Florida, United States, 33708

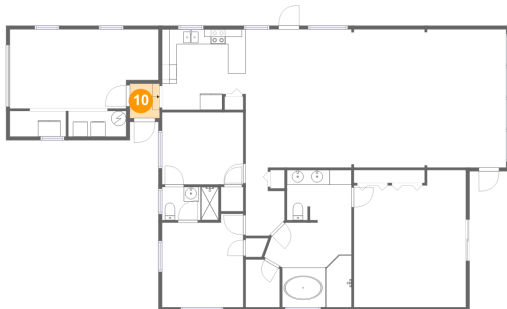
9 Floor 1 - Dining Area



Dimensions: 14'6" x 7'7"
Area: 110 sq. ft
Counted as Living Area:
Yes

Heated: Yes
Finished: Yes
Enclosed: Yes
Contiguous:
Yes
Permitted: Yes
Wet Space: No
Addition: No
Conversion: No

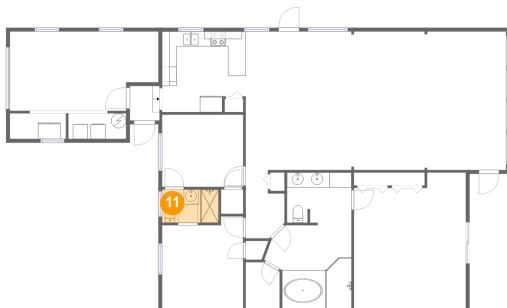
10 Floor 1 - Foyer



Dimensions: 4'0" x 4'7"
Area: 18 sq. ft
Counted as Living Area:
Yes

Heated: Yes
Finished: Yes
Enclosed: Yes
Contiguous:
Yes
Permitted: Yes
Wet Space: No
Addition: No
Conversion: No

11 Floor 1 - Bath

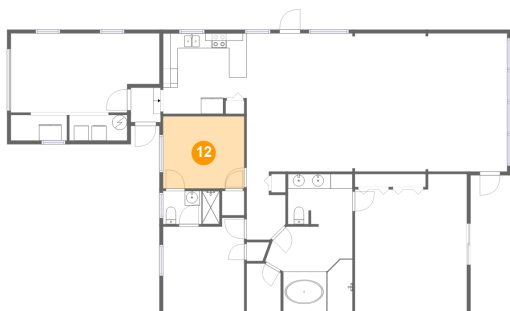


Dimensions: 7'7" x 4'5"
Area: 34 sq. ft
Counted as Living Area:
Yes

Heated: Yes
Finished: Yes
Enclosed: Yes
Contiguous:
Yes
Permitted: Yes
Wet Space: Yes
Addition: No
Conversion: No

17043 Dolphin Drive, North Redington Beach, Pinellas County, Florida, United States, 33708

12 Floor 1 - Bedroom



Dimensions: 10'10" x 9'8"

Area: 105 sq. ft

Counted as Living Area:
Yes

Heated: Yes

Finished: Yes

Enclosed: Yes

Contiguous:
Yes

Permitted: Yes

Wet Space: No

Addition: No

Conversion: No