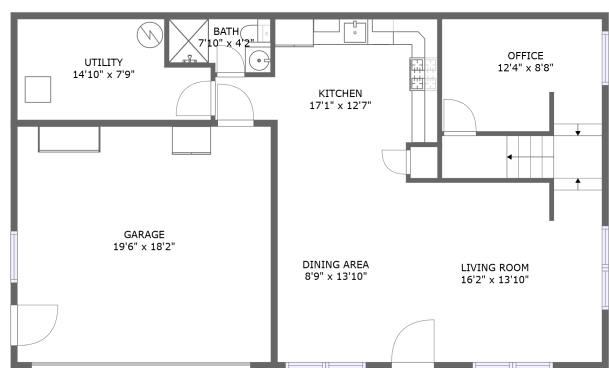
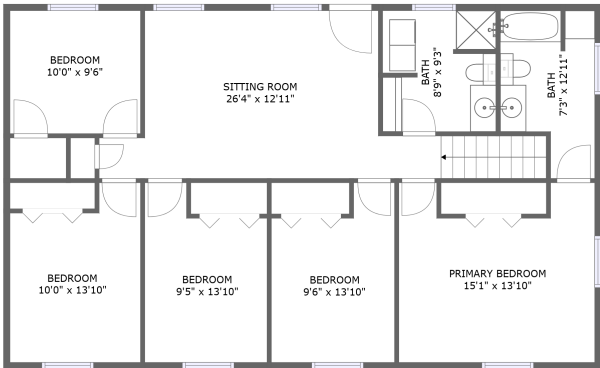


Home report

3409 Roughlock Ln,Spearfish,SD,US



FLOOR 1



FLOOR 2

Property summary

 **1** Garages

 **5** Bedrooms

 **3** Bathrooms

 **0** Half baths

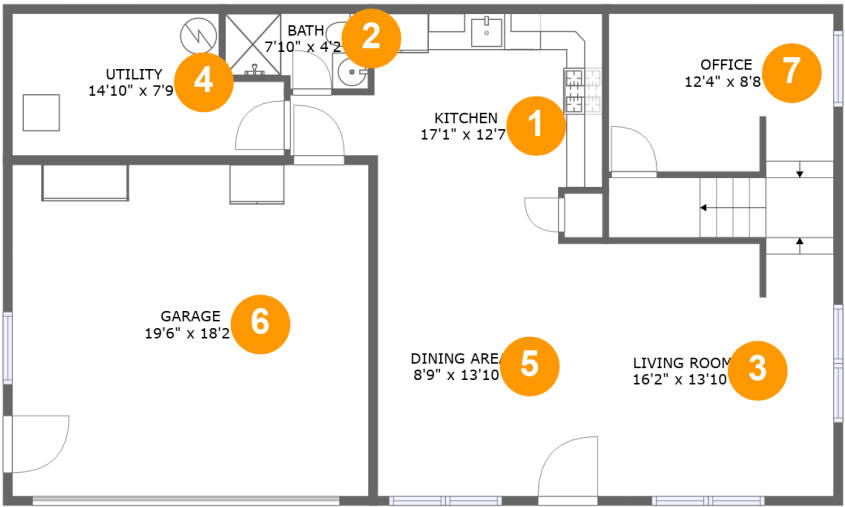
 **2** Floors

 **2,060** Gross living area sqft

 **2,554** Total sqft

Home report

3409 Roughlock Ln,Spearfish,SD,US



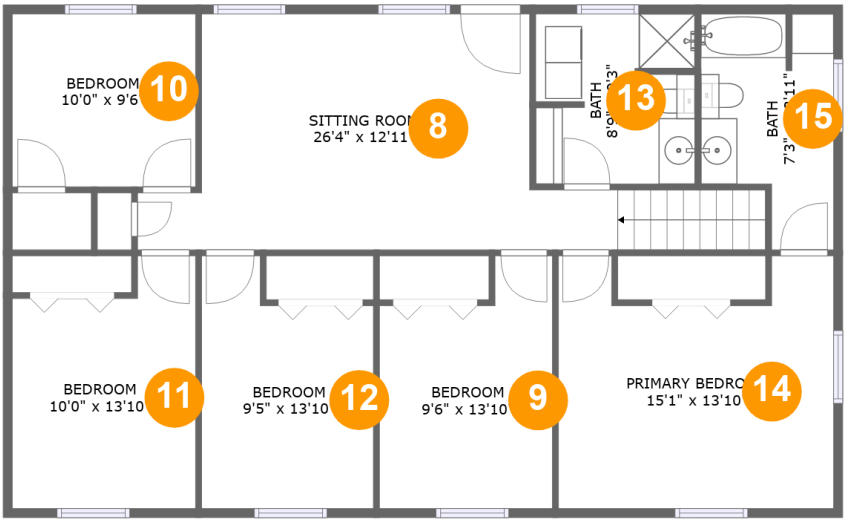
Room dimensions

Floor 1Total sqft: 1262    Living area: 768

#		Dimensions	sqft	Counted as living area
1	Kitchen	17'1" x 12'7"	164 sq. ft	Yes
2	Bath	7'10" x 4'2"	30 sq. ft	Yes
3	Living Room	16'2" x 13'10"	223 sq. ft	Yes
4	Utility	14'10" x 7'9"	102 sq. ft	No
5	Dining Area	8'9" x 13'10"	122 sq. ft	Yes
6	Garage	19'6" x 18'2"	354 sq. ft	No
7	Office	12'4" x 8'8"	148 sq. ft	Yes

Home report

3409 Roughlock Ln,Spearfish,SD,US

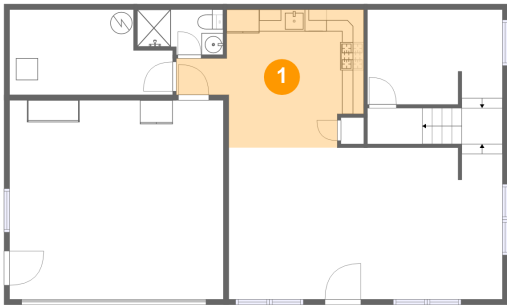


Room dimensions

Floor 2Total sqft: 1292    Living area: 1292

#		Dimensions	sqft	Counted as living area
8	Sitting Room	26'4" x 12'11"	285 sq. ft	Yes
9	Bedroom	9'6" x 13'10"	114 sq. ft	Yes
10	Bedroom	10'0" x 9'6"	95 sq. ft	Yes
11	Bedroom	10'0" x 13'10"	123 sq. ft	Yes
12	Bedroom	9'5" x 13'10"	113 sq. ft	Yes
13	Bath	8'9" x 9'3"	79 sq. ft	Yes
14	Primary Bedroom	15'1" x 13'10"	185 sq. ft	Yes
15	Bath	7'3" x 12'11"	79 sq. ft	Yes

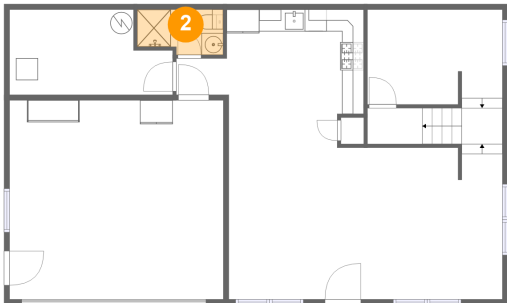
1 Floor 1 - Kitchen



Dimensions: 17'1" x 12'7"  
Area: 164 sq. ft  
Counted as living area: Yes

Heated: Yes  
Finished: Yes  
Enclosed: Yes  
Contiguous: Yes  
Permitted: Yes  
Wet space: No  
Addition: No  
Conversion: No

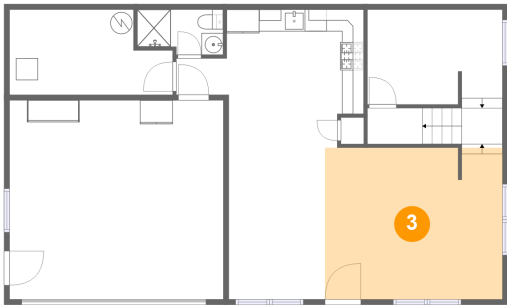
2 Floor 1 - Bath



Dimensions: 7'10" x 4'2"  
Area: 30 sq. ft  
Counted as living area: Yes

Heated: Yes  
Finished: Yes  
Enclosed: Yes  
Contiguous: Yes  
Permitted: Yes  
Wet space: Yes  
Addition: No  
Conversion: No

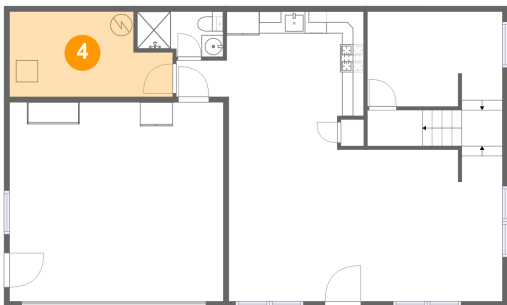
3 Floor 1 - Living Room



Dimensions: 16'2" x 13'10"  
Area: 223 sq. ft  
Counted as living area: Yes

Heated: Yes  
Finished: Yes  
Enclosed: Yes  
Contiguous: Yes  
Permitted: Yes  
Wet space: No  
Addition: No  
Conversion: No

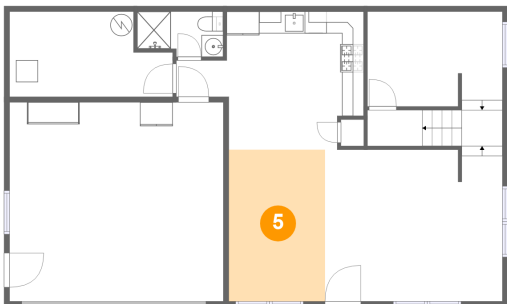
4 Floor 1 - Utility



Dimensions: 14'10" x 7'9"  
Area: 102 sq. ft  
Counted as living area: No

Heated: Yes  
Finished: No  
Enclosed: Yes  
Contiguous: Yes  
Permitted: Yes  
Wet space: No  
Addition: No  
Conversion: No

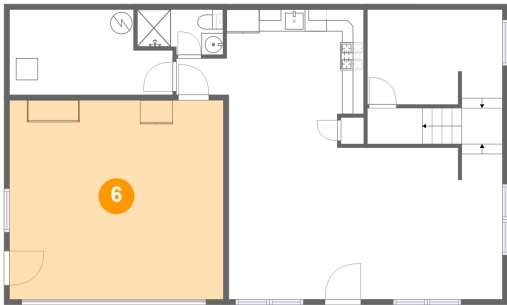
5 Floor 1 - Dining Area



Dimensions: 8'9" x 13'10"  
Area: 122 sq. ft  
Counted as living area: Yes

Heated: Yes  
Finished: Yes  
Enclosed: Yes  
Contiguous: Yes  
Permitted: Yes  
Wet space: No  
Addition: No  
Conversion: No

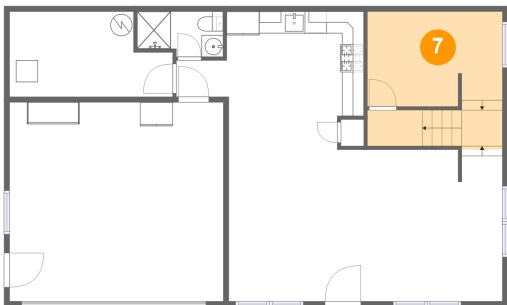
6 Floor 1 - Garage



Dimensions: 19'6" x 18'2"  
Area: 354 sq. ft  
Counted as living area: No

Heated: No  
Finished: No  
Enclosed: Yes  
Contiguous: Yes  
Permitted: Yes  
Wet space: No  
Addition: No  
Conversion: No

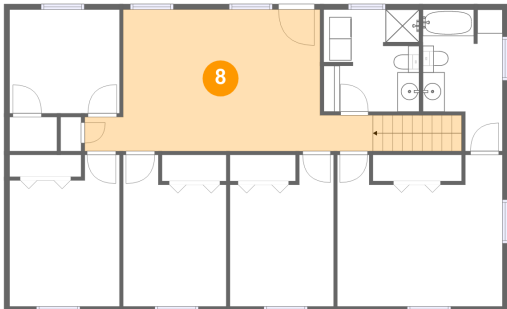
7 Floor 1 - Office



Dimensions: 12'4" x 8'8"  
Area: 148 sq. ft  
Counted as living area: Yes

Heated: Yes  
Finished: Yes  
Enclosed: Yes  
Contiguous: Yes  
Permitted: Yes  
Wet space: No  
Addition: No  
Conversion: No

8 Floor 2 - Sitting Room



Dimensions: 26'4" x 12'11"  
Area: 285 sq. ft  
Counted as living area: Yes

Heated: Yes  
Finished: Yes  
Enclosed: Yes  
Contiguous: Yes  
Permitted: Yes  
Wet space: No  
Addition: No  
Conversion: No

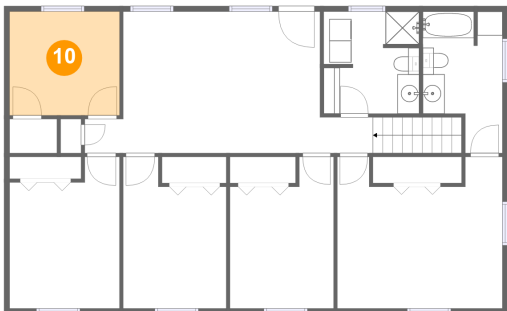
9 Floor 2 - Bedroom



Dimensions: 9'6" x 13'10"  
Area: 114 sq. ft  
Counted as living area: Yes

Heated: Yes  
Finished: Yes  
Enclosed: Yes  
Contiguous: Yes  
Permitted: Yes  
Wet space: No  
Addition: No  
Conversion: No

10 Floor 2 - Bedroom



Dimensions: 10'0" x 9'6"  
Area: 95 sq. ft  
Counted as living area: Yes

Heated: Yes  
Finished: Yes  
Enclosed: Yes  
Contiguous: Yes  
Permitted: Yes  
Wet space: No  
Addition: No  
Conversion: No

11 Floor 2 - Bedroom



Dimensions: 10'0" x 13'10"  
Area: 123 sq. ft  
Counted as living area: Yes

Heated: Yes  
Finished: Yes  
Enclosed: Yes  
Contiguous: Yes  
Permitted: Yes  
Wet space: No  
Addition: No  
Conversion: No

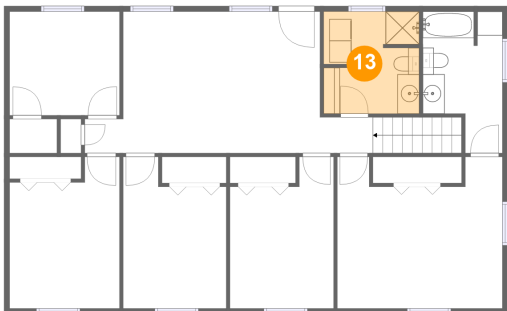
12 Floor 2 - Bedroom



Dimensions: 9'5" x 13'10"  
Area: 113 sq. ft  
Counted as living area: Yes

Heated: Yes  
Finished: Yes  
Enclosed: Yes  
Contiguous: Yes  
Permitted: Yes  
Wet space: No  
Addition: No  
Conversion: No

13 Floor 2 - Bath



Dimensions: 8'9" x 9'3"  
Area: 79 sq. ft  
Counted as living area: Yes

Heated: Yes  
Finished: Yes  
Enclosed: Yes  
Contiguous: Yes  
Permitted: Yes  
Wet space: Yes  
Addition: No  
Conversion: No

14 Floor 2 - Primary Bedroom

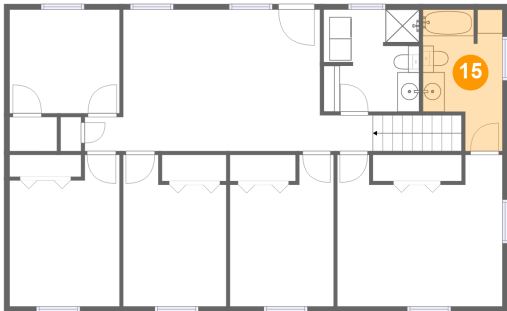


Dimensions: 15'1" x 13'10"  
Area: 185 sq. ft  
Counted as living area: Yes

Heated: Yes  
Finished: Yes  
Enclosed: Yes  
Contiguous: Yes  
Permitted: Yes  
Wet space: No  
Addition: No  
Conversion: No



15 Floor 2 - Bath



Dimensions: 7'3" x 12'11"  
Area: 79 sq. ft  
Counted as living area: Yes

Heated: Yes  
Finished: Yes  
Enclosed: Yes  
Contiguous: Yes  
Permitted: Yes  
Wet space: Yes  
Addition: No  
Conversion: No