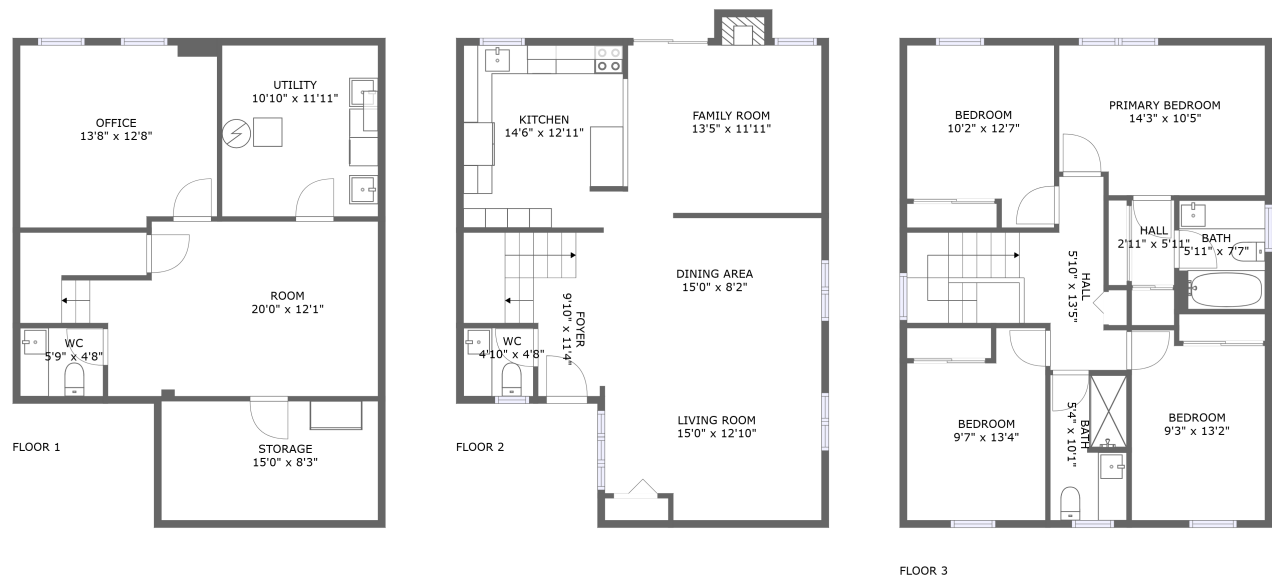


Home report

300 Sylvie Terrace, Queenswood Heights, Orléans, Ontario, Canada, K1E 3M2




Total Area: 2037 sq. ft


Below Ground: 482 sq. ft, Floor 2: 736 sq. ft, Floor 3: 819 sq. ft

Excluded: Utility 129 sq. ft, Storage 124 sq. ft, Fireplace 8 sq. ft, Walls: 169 sq. ft

Property summary

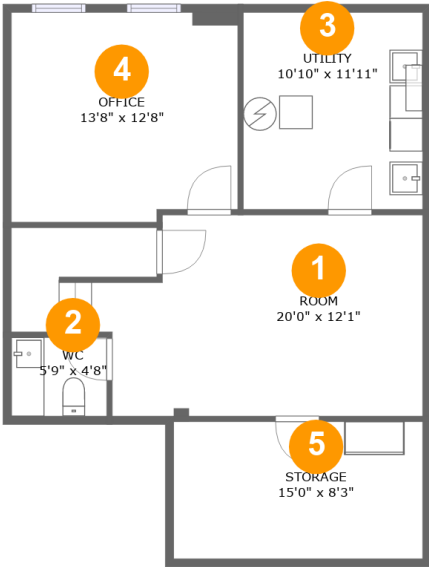
 **3** Floors

 **4** Bedrooms

 **2** Bathrooms

 **2** Half baths

300 Sylvie Terrace, Queenswood Heights, Orléans, Ontario,
Canada, K1E 3M2



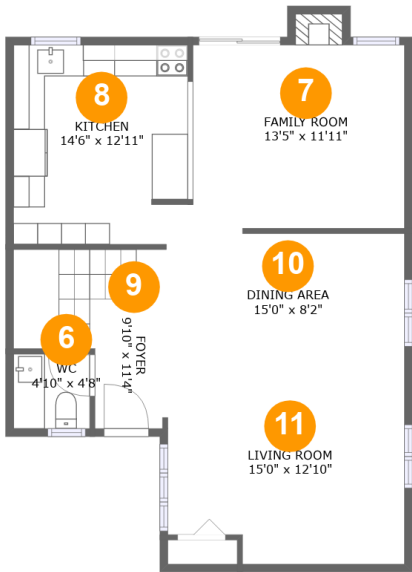
Room dimensions

Floor 1 Below ground Total:482sqft Excluded: 253sqft

#		Max Dimensions	sqft	Included
1	Room	20'0" x 12'1"	260 sq. ft	Yes
2	WC	5'9" x 4'8"	27 sq. ft	Yes
3	Utility	10'10" x 11'11"	129 sq. ft	No
4	Office	13'8" x 12'8"	169 sq. ft	Yes
5	Storage	15'0" x 8'3"	124 sq. ft	No

Home report

300 Sylvie Terrace, Queenswood Heights, Orléans, Ontario, Canada, K1E 3M2



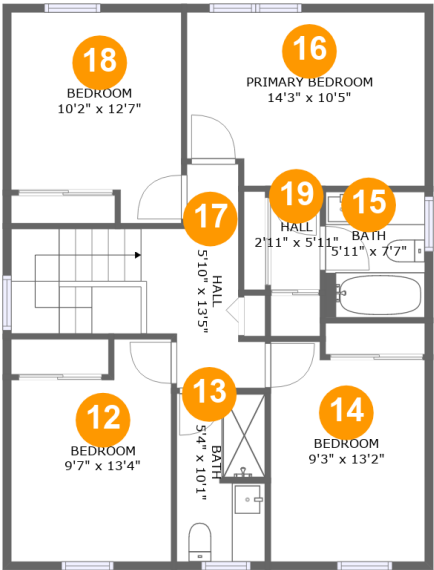
Room dimensions

Floor 2 Total:736sqft Excluded: 8sqft

#		Max Dimensions	sqft	Included
6	WC	4'10" x 4'8"	23 sq. ft	Yes
7	Family Room	13'5" x 11'11"	160 sq. ft	Yes
8	Kitchen	14'6" x 12'11"	147 sq. ft	Yes
9	Foyer	9'10" x 11'4"	85 sq. ft	Yes
10	Dining Area	15'0" x 8'2"	120 sq. ft	Yes
11	Living Room	15'0" x 12'10"	184 sq. ft	Yes

Home report

300 Sylvie Terrace, Queenswood Heights, Orléans, Ontario,
Canada, K1E 3M2



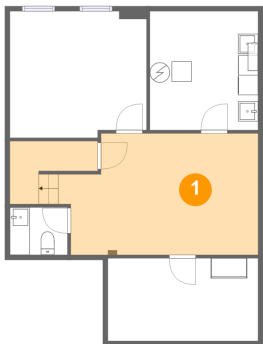
Room dimensions

Floor 3 Total:819sqft Excluded: 0sqft

#		Max Dimensions	sqft	Included
12	Bedroom	9'7" x 13'4"	113 sq. ft	Yes
13	Bath	5'4" x 10'1"	53 sq. ft	Yes
14	Bedroom	9'3" x 13'2"	115 sq. ft	Yes
15	Bath	5'11" x 7'7"	45 sq. ft	Yes
16	Primary Bedroom	14'3" x 10'5"	143 sq. ft	Yes
17	Hall	5'10" x 13'5"	114 sq. ft	Yes
18	Bedroom	10'2" x 12'7"	116 sq. ft	Yes
19	Hall	2'11" x 5'11"	17 sq. ft	Yes

300 Sylvie Terrace, Queenswood Heights, Orléans, Ontario,
Canada, K1E 3M2

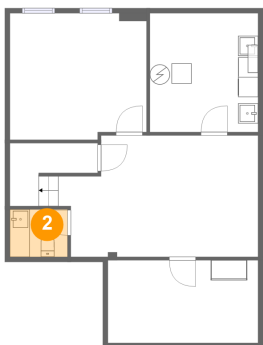
1 Floor 1 - Room



Max Dimensions: 20'0" x 12'1"
Calculated Area: 260 sq. ft
Included: Yes

Heated: Yes
Finished: Yes
Enclosed: Yes
Contiguous: Yes
Permitted: Yes
Wet space: No
Addition: No
Conversion: No

2 Floor 1 - WC

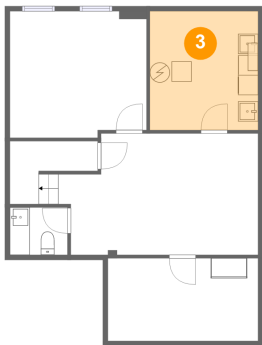


Max Dimensions: 5'9" x 4'8"
Calculated Area: 27 sq. ft
Included: Yes

Heated: Yes
Finished: Yes
Enclosed: Yes
Contiguous: Yes
Permitted: Yes
Wet space: Yes
Addition: No
Conversion: No

300 Sylvie Terrace, Queenswood Heights, Orléans, Ontario,
Canada, K1E 3M2

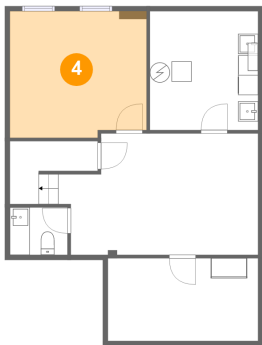
3 Floor 1 - Utility



Max Dimensions: 10'10" x 11'11"
Calculated Area: 129 sq. ft
Included: No

Heated: Yes
Finished: No
Enclosed: Yes
Contiguous: Yes
Permitted: Yes
Wet space: No
Addition: No
Conversion: No

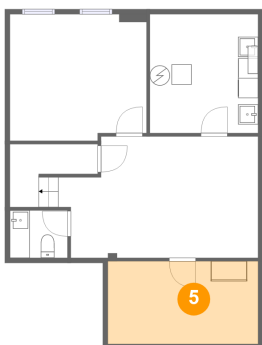
4 Floor 1 - Office



Max Dimensions: 13'8" x 12'8"
Calculated Area: 169 sq. ft
Included: Yes

Heated: Yes
Finished: Yes
Enclosed: Yes
Contiguous: Yes
Permitted: Yes
Wet space: No
Addition: No
Conversion: No

5 Floor 1 - Storage



Max Dimensions: 15'0" x 8'3"
Calculated Area: 124 sq. ft
Included: No

Heated: No
Finished: No
Enclosed: No
Contiguous: Yes
Permitted: Yes
Wet space: No
Addition: No
Conversion: No

300 Sylvie Terrace, Queenswood Heights, Orléans, Ontario,
Canada, K1E 3M2

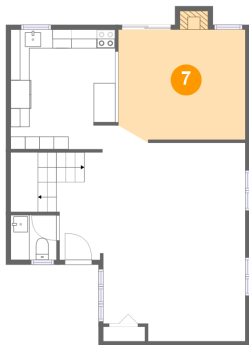
6 Floor 2 - WC



Max Dimensions: 4'10" x 4'8"
Calculated Area: 23 sq. ft
Included: Yes

Heated: Yes
Finished: Yes
Enclosed: Yes
Contiguous: Yes
Permitted: Yes
Wet space: No
Addition: No
Conversion: No

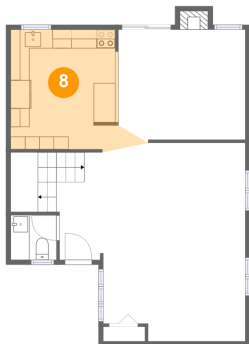
7 Floor 2 - Family Room



Max Dimensions: 13'5" x 11'11"
Calculated Area: 160 sq. ft
Included: Yes

Heated: Yes
Finished: Yes
Enclosed: Yes
Contiguous: Yes
Permitted: Yes
Wet space: No
Addition: No
Conversion: No

8 Floor 2 - Kitchen



Max Dimensions: 14'6" x 12'11"
Calculated Area: 147 sq. ft
Included: Yes

Heated: Yes
Finished: Yes
Enclosed: Yes
Contiguous: Yes
Permitted: Yes
Wet space: No
Addition: No
Conversion: No

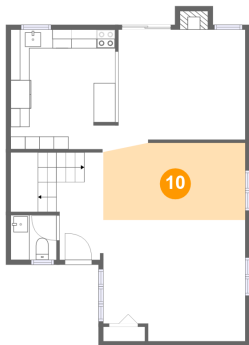
9 Floor 2 - Foyer



Max Dimensions: 9'10" x 11'4"
Calculated Area: 85 sq. ft
Included: Yes

Heated: Yes
Finished: Yes
Enclosed: Yes
Contiguous: Yes
Permitted: Yes
Wet space: No
Addition: No
Conversion: No

10 Floor 2 - Dining Area



Max Dimensions: 15'0" x 8'2"
Calculated Area: 120 sq. ft
Included: Yes

Heated: Yes
Finished: Yes
Enclosed: Yes
Contiguous: Yes
Permitted: Yes
Wet space: No
Addition: No
Conversion: No

11 Floor 2 - Living Room

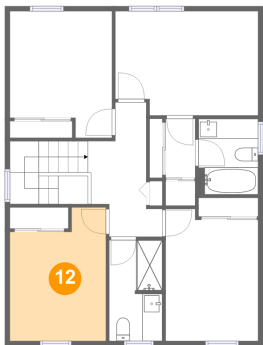


Max Dimensions: 15'0" x 12'10"
Calculated Area: 184 sq. ft
Included: Yes

Heated: Yes
Finished: Yes
Enclosed: Yes
Contiguous: Yes
Permitted: Yes
Wet space: No
Addition: No
Conversion: No

300 Sylvie Terrace, Queenswood Heights, Orléans, Ontario,
Canada, K1E 3M2

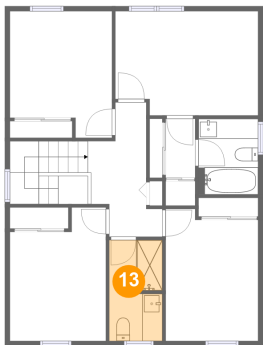
12 Floor 3 - Bedroom



Max Dimensions: 9'7" x 13'4"
Calculated Area: 113 sq. ft
Included: Yes

Heated: Yes
Finished: Yes
Enclosed: Yes
Contiguous: Yes
Permitted: Yes
Wet space: No
Addition: No
Conversion: No

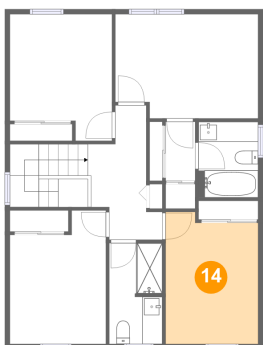
13 Floor 3 - Bath



Max Dimensions: 5'4" x 10'1"
Calculated Area: 53 sq. ft
Included: Yes

Heated: Yes
Finished: Yes
Enclosed: Yes
Contiguous: Yes
Permitted: Yes
Wet space: Yes
Addition: No
Conversion: No

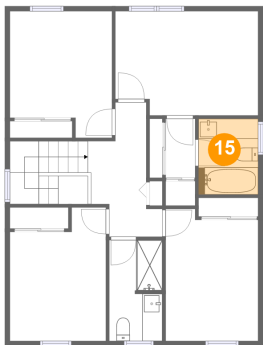
14 Floor 3 - Bedroom



Max Dimensions: 9'3" x 13'2"
Calculated Area: 115 sq. ft
Included: Yes

Heated: Yes
Finished: Yes
Enclosed: Yes
Contiguous: Yes
Permitted: Yes
Wet space: No
Addition: No
Conversion: No

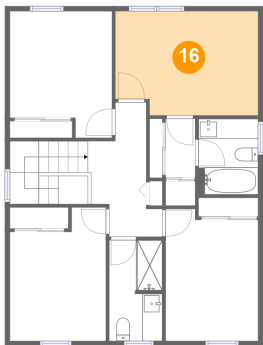
15 Floor 3 - Bath



Max Dimensions: 5'11" x 7'7"
Calculated Area: 45 sq. ft
Included: Yes

Heated: Yes
Finished: Yes
Enclosed: Yes
Contiguous: Yes
Permitted: Yes
Wet space: Yes
Addition: No
Conversion: No

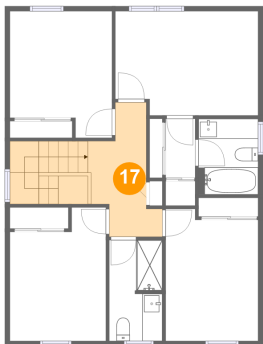
16 Floor 3 - Primary Bedroom



Max Dimensions: 14'3" x 10'5"
Calculated Area: 143 sq. ft
Included: Yes

Heated: Yes
Finished: Yes
Enclosed: Yes
Contiguous: Yes
Permitted: Yes
Wet space: No
Addition: No
Conversion: No

17 Floor 3 - Hall

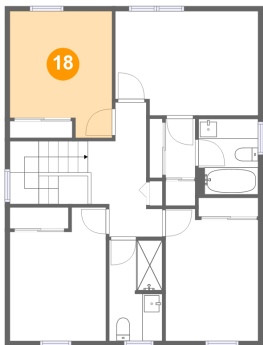


Max Dimensions: 5'10" x 13'5"
Calculated Area: 114 sq. ft
Included: Yes

Heated: Yes
Finished: Yes
Enclosed: Yes
Contiguous: Yes
Permitted: Yes
Wet space: No
Addition: No
Conversion: No

300 Sylvie Terrace, Queenswood Heights, Orléans, Ontario,
Canada, K1E 3M2

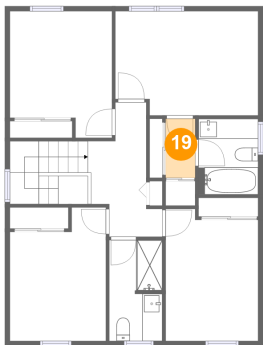
18 Floor 3 - Bedroom



Max Dimensions: 10'2" x 12'7"
Calculated Area: 116 sq. ft
Included: Yes

Heated: Yes
Finished: Yes
Enclosed: Yes
Contiguous: Yes
Permitted: Yes
Wet space: No
Addition: No
Conversion: No

19 Floor 3 - Hall



Max Dimensions: 2'11" x 5'11"
Calculated Area: 17 sq. ft
Included: Yes

Heated: Yes
Finished: Yes
Enclosed: Yes
Contiguous: Yes
Permitted: Yes
Wet space: No
Addition: No
Conversion: No