

# 843 Vedder Place

Port Coquitlam BC V3B 8G4

Main Level Area: 1,220 SQ.FT.  
Upper Level Area: 909 SQ.FT.  
Total Area: 2,129 SQ.FT.

3



BEDROOMS

3

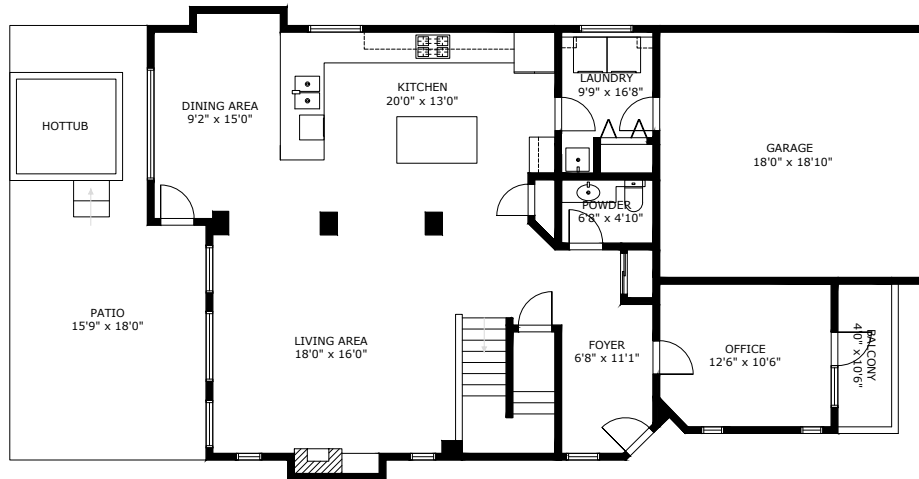


BATHROOMS

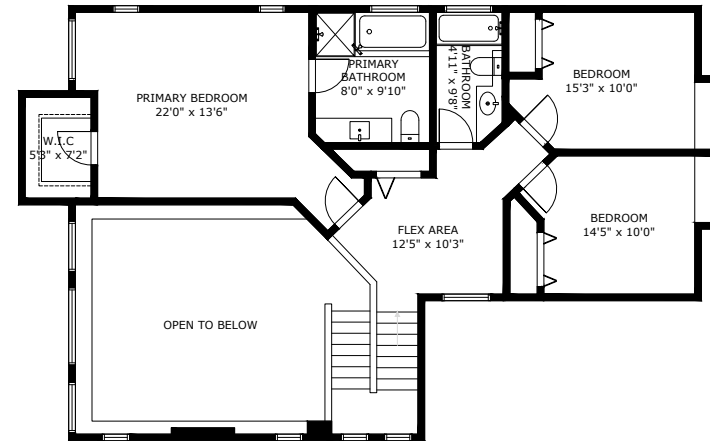
2,129



TOTAL SQ.FT.



Main Level Area:  
Ceiling Height: 8'0"-18'0"



Upper Level Area:  
Ceiling Height: 8'0"

## 843 VEDDER PL PORT COQUITLAM BC V3B 8G4

Measurements are approximate and may not be to scale. Gross measurements as per BCASSESSMENT  
The floor plan illustration is not suitable for construction/architectural purposes.  
This communication is not intended to cause or induce breach of an existing agency agreement

**3D IMMERSIVE**  
Tours Photos Floor Plans

Professionally measured by 3D Immersive Marketing Ltd.

Lead Floor Planner: *Simon Alexander*  
Quality Assurance: *Dianne Graham*