

Home report

150 Morgana Drive, Shepherdstown, Jefferson County, West Virginia, United States, 25443



Total Area: 2879 sq. ft

Below Ground: 0 sq. ft, Floor 2: 1472 sq. ft, Floor 3: 1407 sq. ft

Excluded: Basement 1470 sq. ft, Garage 785 sq. ft, Outdoor Deck 239 sq. ft, Outdoor Porch 288 sq. ft, Opentobelow 77 sq. ft, Walls: 272 sq. ft

Property summary

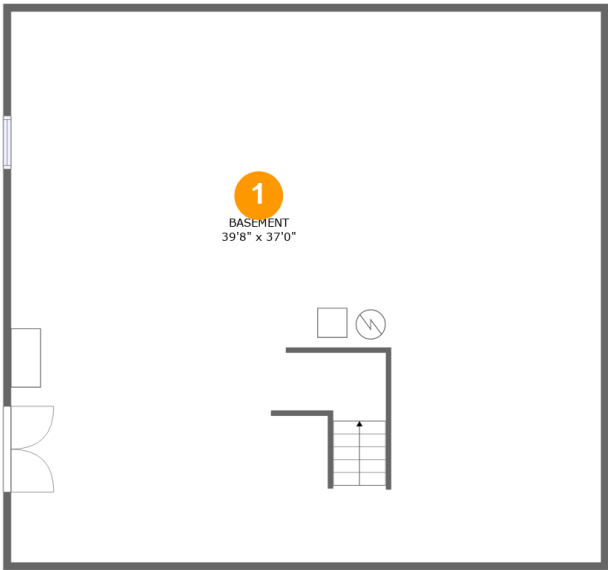
3 Floors

4 Bedrooms

4 Bathrooms

1 Garages

150 Morgana Drive, Shepherdstown, Jefferson County, West Virginia, United States, 25443



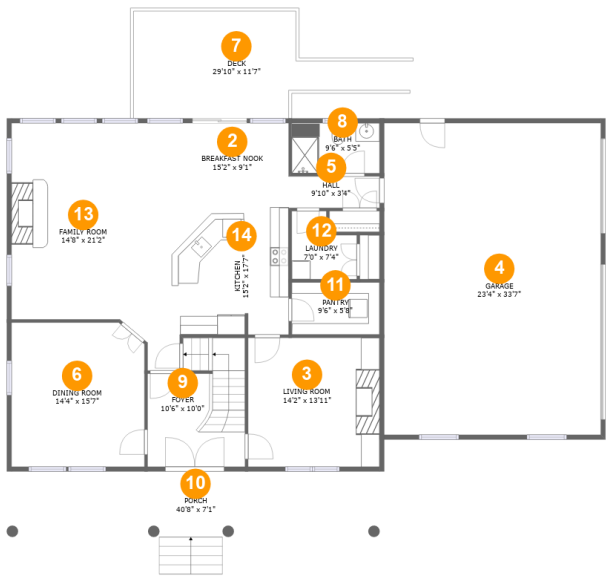
Room dimensions

Floor 1 Below ground Total:0sqft Excluded: 1470sqft

#		Max Dimensions	sqft	Included
1	Basement	39'8" x 37'0"	1470 sq. ft	No

Home report

150 Morgana Drive, Shepherdstown, Jefferson County, West Virginia, United States, 25443



Room dimensions

Floor 2 Total:1472sqft   Excluded: 1312sqft

#		Max Dimensions	sqft	Included
2	Breakfast Nook	15'2" x 9'1"	139 sq. ft	Yes
3	Living Room	14'2" x 13'11"	197 sq. ft	Yes
4	Garage	23'4" x 33'7"	785 sq. ft	No
5	Hall	9'10" x 3'4"	33 sq. ft	Yes
6	Dining Room	14'4" x 15'7"	220 sq. ft	Yes
7	Deck	29'10" x 11'7"	239 sq. ft	No
8	Bath	9'6" x 5'5"	51 sq. ft	Yes
9	Foyer	10'6" x 10'0"	130 sq. ft	Yes
10	Porch	40'8" x 7'1"	288 sq. ft	No
11	Pantry	9'6" x 5'8"	53 sq. ft	Yes
12	Laundry	7'0" x 7'4"	43 sq. ft	Yes

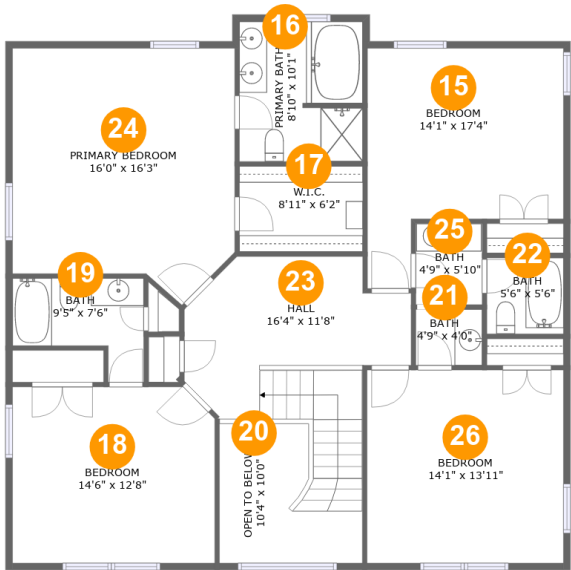
Home report

150 Morgana Drive, Shepherdstown, Jefferson County, West Virginia, United States, 25443

#		Max Dimensions	sqft	Included
13	Family Room	14'8" x 21'2"	314 sq. ft	Yes
14	Kitchen	15'2" x 17'7"	221 sq. ft	Yes

Home report

150 Morgana Drive, Shepherdstown, Jefferson County, West Virginia, United States, 25443



Room dimensions

Floor 3 Total:1407sqft    Excluded: 77sqft

#		Max Dimensions	sqft	Included
15	Bedroom	14'1" x 17'4"	189 sq. ft	Yes
16	Primary Bath	8'10" x 10'1"	88 sq. ft	Yes
17	W.I.C.	8'11" x 6'2"	55 sq. ft	Yes
18	Bedroom	14'6" x 12'8"	182 sq. ft	Yes
19	Bath	9'5" x 7'6"	53 sq. ft	Yes
20	Open To Below	10'4" x 10'0"	77 sq. ft	No
21	Bath	4'9" x 4'0"	19 sq. ft	Yes
22	Bath	5'6" x 5'6"	30 sq. ft	Yes
23	Hall	16'4" x 11'8"	183 sq. ft	Yes
24	Primary Bedroom	16'0" x 16'3"	264 sq. ft	Yes
25	Bath	4'9" x 5'10"	28 sq. ft	Yes

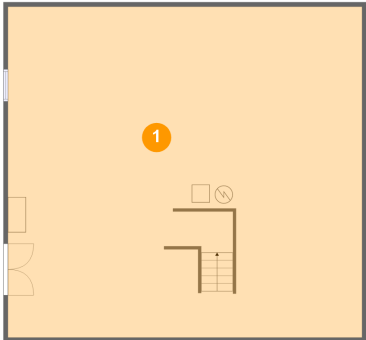
Home report

150 Morgana Drive, Shepherdstown, Jefferson County, West Virginia, United States, 25443

#		Max Dimensions	sqft	Included
26	Bedroom	14'1" x 13'11"	197 sq. ft	Yes

150 Morgana Drive, Shepherdstown, Jefferson County, West Virginia, United States, 25443

1 Floor 1 - Basement



Max Dimensions: 39'8" x 37'0"  
Calculated Area: 1470 sq. ft  
Included: No

Heated: Yes  
Finished: No  
Enclosed: Yes  
Contiguous: Yes  
Permitted: Yes  
Wet space: No  
Addition: No  
Conversion: No

2 Floor 2 - Breakfast Nook



Max Dimensions: 15'2" x 9'1"  
Calculated Area: 139 sq. ft  
Included: Yes

Heated: Yes  
Finished: Yes  
Enclosed: Yes  
Contiguous: Yes  
Permitted: Yes  
Wet space: No  
Addition: No  
Conversion: No

150 Morgana Drive, Shepherdstown, Jefferson County, West Virginia, United States, 25443

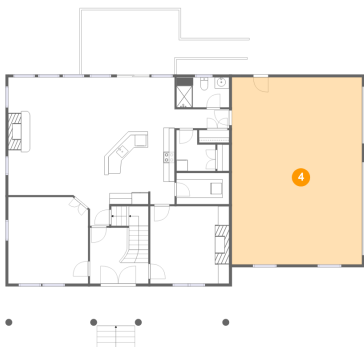
3 Floor 2 - Living Room



Max Dimensions: 14'2" x 13'11"  
Calculated Area: 197 sq. ft  
Included: Yes

Heated: Yes  
Finished: Yes  
Enclosed: Yes  
Contiguous: Yes  
Permitted: Yes  
Wet space: No  
Addition: No  
Conversion: No

4 Floor 2 - Garage



Max Dimensions: 23'4" x 33'7"  
Calculated Area: 785 sq. ft  
Included: No

Heated: No  
Finished: No  
Enclosed: Yes  
Contiguous: Yes  
Permitted: Yes  
Wet space: No  
Addition: No  
Conversion: No

5 Floor 2 - Hall



Max Dimensions: 9'10" x 3'4"  
Calculated Area: 33 sq. ft  
Included: Yes

Heated: Yes  
Finished: Yes  
Enclosed: Yes  
Contiguous: Yes  
Permitted: Yes  
Wet space: No  
Addition: No  
Conversion: No



150 Morgana Drive, Shepherdstown, Jefferson County, West Virginia, United States, 25443

6 Floor 2 - Dining Room



Max Dimensions: 14'4" x 15'7"  
Calculated Area: 220 sq. ft  
Included: Yes

Heated: Yes  
Finished: Yes  
Enclosed: Yes  
Contiguous: Yes  
Permitted: Yes  
Wet space: No  
Addition: No  
Conversion: No

7 Floor 2 - Deck



Max Dimensions: 29'10" x 11'7"  
Calculated Area: 239 sq. ft  
Included: No

Heated: No  
Finished: Yes  
Enclosed: No  
Contiguous: Yes  
Permitted: Yes  
Wet space: No  
Addition: No  
Conversion: No

8 Floor 2 - Bath



Max Dimensions: 9'6" x 5'5"  
Calculated Area: 51 sq. ft  
Included: Yes

Heated: Yes  
Finished: Yes  
Enclosed: Yes  
Contiguous: Yes  
Permitted: Yes  
Wet space: Yes  
Addition: No  
Conversion: No

150 Morgana Drive, Shepherdstown, Jefferson County, West Virginia, United States, 25443

9 Floor 2 - Foyer



Max Dimensions: 10'6" x 10'0"  
Calculated Area: 130 sq. ft  
Included: Yes

Heated: Yes  
Finished: Yes  
Enclosed: Yes  
Contiguous: Yes  
Permitted: Yes  
Wet space: No  
Addition: No  
Conversion: No

10 Floor 2 - Porch



Max Dimensions: 40'8" x 7'1"  
Calculated Area: 288 sq. ft  
Included: No

Heated: No  
Finished: Yes  
Enclosed: No  
Contiguous: Yes  
Permitted: Yes  
Wet space: No  
Addition: No  
Conversion: No

11 Floor 2 - Pantry



Max Dimensions: 9'6" x 5'8"  
Calculated Area: 53 sq. ft  
Included: Yes

Heated: Yes  
Finished: Yes  
Enclosed: Yes  
Contiguous: Yes  
Permitted: Yes  
Wet space: No  
Addition: No  
Conversion: No

150 Morgana Drive, Shepherdstown, Jefferson County, West Virginia, United States, 25443

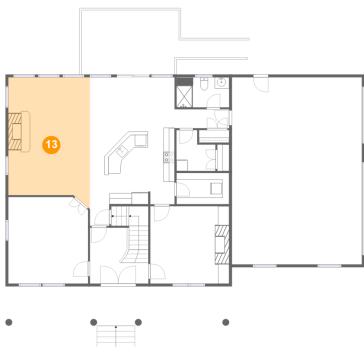
12 Floor 2 - Laundry



Max Dimensions: 7'0" x 7'4"  
Calculated Area: 43 sq. ft  
Included: Yes

Heated: Yes  
Finished: Yes  
Enclosed: Yes  
Contiguous: Yes  
Permitted: Yes  
Wet space: No  
Addition: No  
Conversion: No

13 Floor 2 - Family Room



Max Dimensions: 14'8" x 21'2"  
Calculated Area: 314 sq. ft  
Included: Yes

Heated: Yes  
Finished: Yes  
Enclosed: Yes  
Contiguous: Yes  
Permitted: Yes  
Wet space: No  
Addition: No  
Conversion: No

14 Floor 2 - Kitchen



Max Dimensions: 15'2" x 17'7"  
Calculated Area: 221 sq. ft  
Included: Yes

Heated: Yes  
Finished: Yes  
Enclosed: Yes  
Contiguous: Yes  
Permitted: Yes  
Wet space: No  
Addition: No  
Conversion: No

150 Morgana Drive, Shepherdstown, Jefferson County, West Virginia, United States, 25443

### 15 Floor 3 - Bedroom



Max Dimensions: 14'1" x 17'4"  
Calculated Area: 189 sq. ft  
Included: Yes

Heated: Yes  
Finished: Yes  
Enclosed: Yes  
Contiguous: Yes  
Permitted: Yes  
Wet space: No  
Addition: No  
Conversion: No

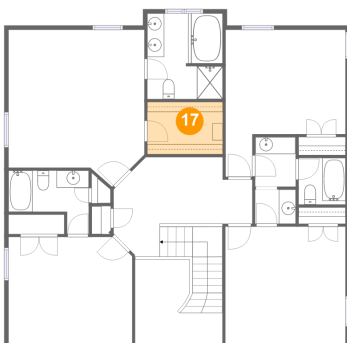
### 16 Floor 3 - Primary Bath



Max Dimensions: 8'10" x 10'1"  
Calculated Area: 88 sq. ft  
Included: Yes

Heated: Yes  
Finished: Yes  
Enclosed: Yes  
Contiguous: Yes  
Permitted: Yes  
Wet space: Yes  
Addition: No  
Conversion: No

### 17 Floor 3 - W.I.C.



Max Dimensions: 8'11" x 6'2"  
Calculated Area: 55 sq. ft  
Included: Yes

Heated: Yes  
Finished: Yes  
Enclosed: Yes  
Contiguous: Yes  
Permitted: Yes  
Wet space: No  
Addition: No  
Conversion: No

150 Morgana Drive, Shepherdstown, Jefferson County, West Virginia, United States, 25443

### 18 Floor 3 - Bedroom



Max Dimensions: 14'6" x 12'8"  
Calculated Area: 182 sq. ft  
Included: Yes

Heated: Yes  
Finished: Yes  
Enclosed: Yes  
Contiguous: Yes  
Permitted: Yes  
Wet space: No  
Addition: No  
Conversion: No

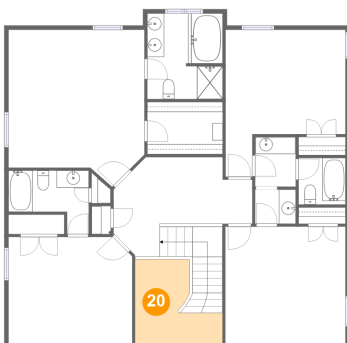
### 19 Floor 3 - Bath



Max Dimensions: 9'5" x 7'6"  
Calculated Area: 53 sq. ft  
Included: Yes

Heated: Yes  
Finished: Yes  
Enclosed: Yes  
Contiguous: Yes  
Permitted: Yes  
Wet space: Yes  
Addition: No  
Conversion: No

### 20 Floor 3 - Open To Below



Max Dimensions: 10'4" x 10'0"  
Calculated Area: 77 sq. ft  
Included: No

Heated: No  
Finished: No  
Enclosed: No  
Contiguous: Yes  
Permitted: No  
Wet space: No  
Addition: No  
Conversion: No

150 Morgana Drive, Shepherdstown, Jefferson County, West Virginia, United States, 25443

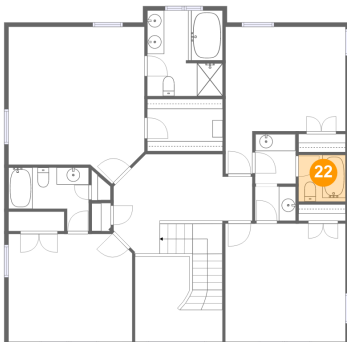
### 21 Floor 3 - Bath



Max Dimensions: 4'9" x 4'0"  
Calculated Area: 19 sq. ft  
Included: Yes

Heated: Yes  
Finished: Yes  
Enclosed: Yes  
Contiguous: Yes  
Permitted: Yes  
Wet space: Yes  
Addition: No  
Conversion: No

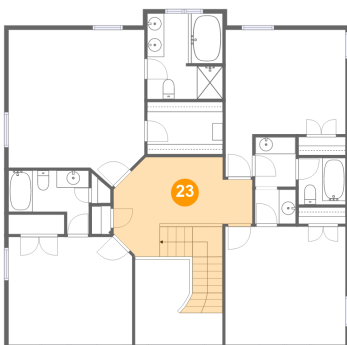
### 22 Floor 3 - Bath



Max Dimensions: 5'6" x 5'6"  
Calculated Area: 30 sq. ft  
Included: Yes

Heated: Yes  
Finished: Yes  
Enclosed: Yes  
Contiguous: Yes  
Permitted: Yes  
Wet space: Yes  
Addition: No  
Conversion: No

### 23 Floor 3 - Hall



Max Dimensions: 16'4" x 11'8"  
Calculated Area: 183 sq. ft  
Included: Yes

Heated: Yes  
Finished: Yes  
Enclosed: Yes  
Contiguous: Yes  
Permitted: Yes  
Wet space: No  
Addition: No  
Conversion: No

150 Morgana Drive, Shepherdstown, Jefferson County, West Virginia, United States, 25443

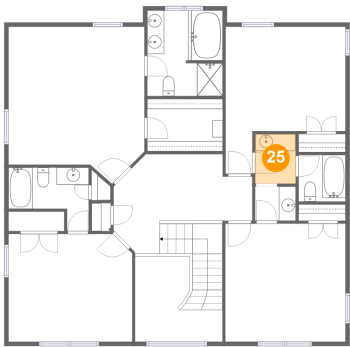
24 Floor 3 - Primary Bedroom



Max Dimensions: 16'0" x 16'3"  
Calculated Area: 264 sq. ft  
Included: Yes

Heated: Yes  
Finished: Yes  
Enclosed: Yes  
Contiguous: Yes  
Permitted: Yes  
Wet space: No  
Addition: No  
Conversion: No

25 Floor 3 - Bath



Max Dimensions: 4'9" x 5'10"  
Calculated Area: 28 sq. ft  
Included: Yes

Heated: Yes  
Finished: Yes  
Enclosed: Yes  
Contiguous: Yes  
Permitted: Yes  
Wet space: Yes  
Addition: No  
Conversion: No

26 Floor 3 - Bedroom



Max Dimensions: 14'1" x 13'11"  
Calculated Area: 197 sq. ft  
Included: Yes

Heated: Yes  
Finished: Yes  
Enclosed: Yes  
Contiguous: Yes  
Permitted: Yes  
Wet space: No  
Addition: No  
Conversion: No