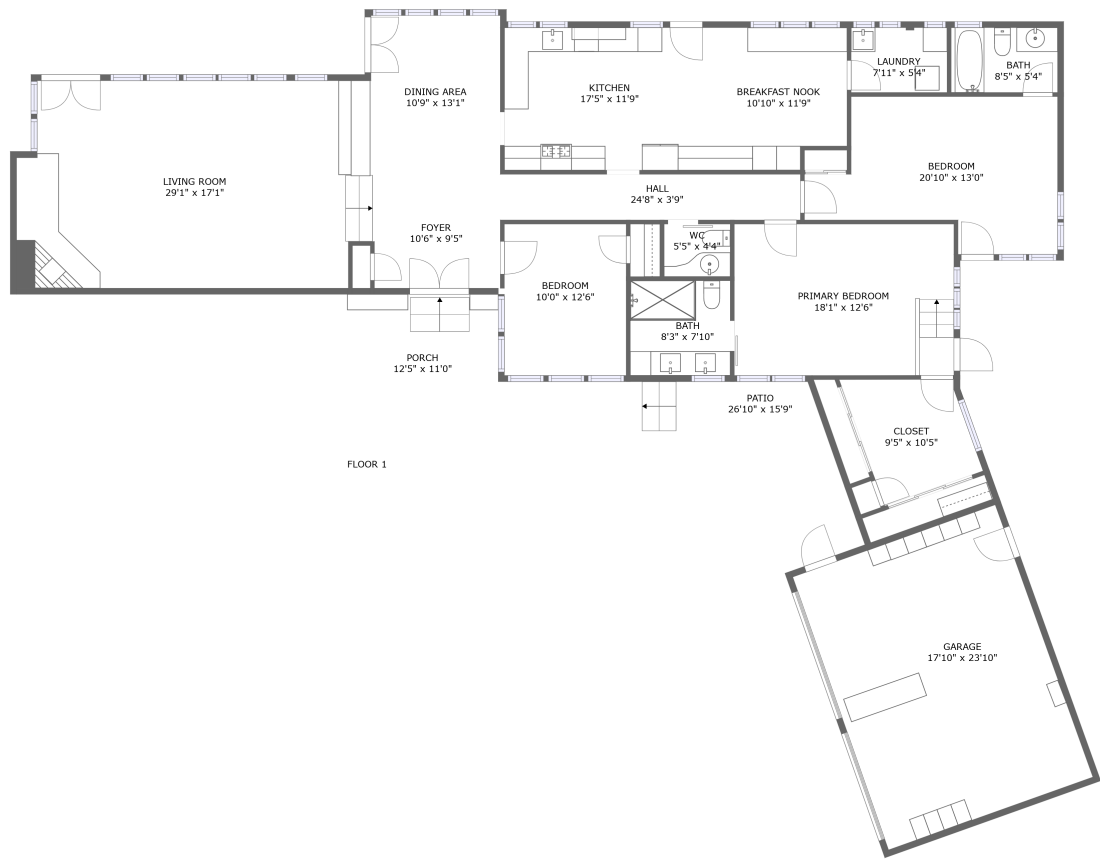


Home report

810 Cherry Street, Paso Robles, San Luis Obispo County,
California, United States, 93446



Total Area: 2217 sq. ft


Floor 1: 2217 sq. ft

Excluded: Garage 460 sq. ft, Outdoor Porch 137 sq. ft, Outdoor Patio 188 sq. ft

Property summary

 1 Floors

 3 Bedrooms

 2 Bathrooms

Home report

**810 Cherry Street, Paso Robles, San Luis Obispo County,
California, United States, 93446**



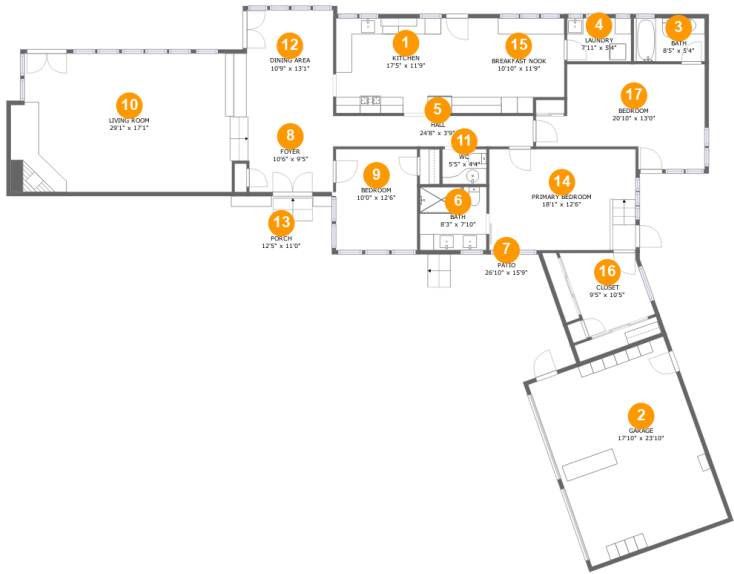
1
Half baths



1
Garages

Home report

810 Cherry Street, Paso Robles, San Luis Obispo County,
California, United States, 93446



Room dimensions

Floor 1 Total:2217sqft Excluded: 785sqft

#		Max Dimensions	sqft	Included
1	Kitchen	17'5" x 11'9"	204 sq. ft	Yes
2	Garage	17'10" x 23'10"	424 sq. ft	No
3	Bath	8'5" x 5'4"	47 sq. ft	Yes
4	Laundry	7'11" x 5'4"	42 sq. ft	Yes
5	Hall	24'8" x 3'9"	93 sq. ft	Yes
6	Bath	8'3" x 7'10"	64 sq. ft	Yes
7	Patio	26'10" x 15'9"	188 sq. ft	No
8	Foyer	10'6" x 9'5"	99 sq. ft	Yes
9	Bedroom	10'0" x 12'6"	125 sq. ft	Yes
10	Living Room	29'1" x 17'1"	480 sq. ft	Yes
11	WC	5'5" x 4'4"	24 sq. ft	Yes

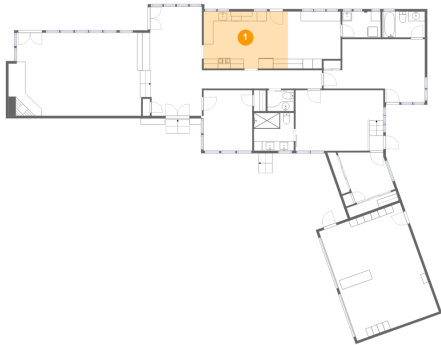
Home report

**810 Cherry Street, Paso Robles, San Luis Obispo County,
California, United States, 93446**

#		Max Dimensions	sqft	Included
12	Dining Area	10'9" x 13'1"	140 sq. ft	Yes
13	Porch	12'5" x 11'0"	137 sq. ft	No
14	Primary Bedroom	18'1" x 12'6"	225 sq. ft	Yes
15	Breakfast Nook	10'10" x 11'9"	119 sq. ft	Yes
16	Closet	9'5" x 10'5"	82 sq. ft	Yes
17	Bedroom	20'10" x 13'0"	210 sq. ft	Yes

810 Cherry Street, Paso Robles, San Luis Obispo County,
California, United States, 93446

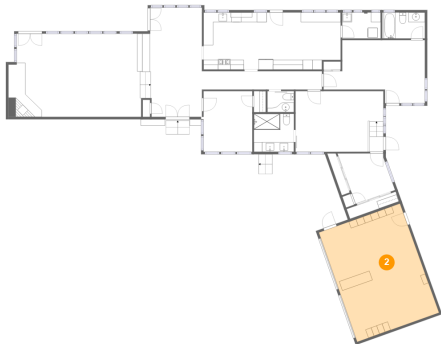
1 Floor 1 - Kitchen



Max Dimensions: 17'5" x 11'9"
Calculated Area: 204 sq. ft
Included: Yes

Heated: Yes
Finished: Yes
Enclosed: Yes
Contiguous: Yes
Permitted: Yes
Wet space: No
Addition: No
Conversion: No

2 Floor 1 - Garage



Max Dimensions: 17'10" x 23'10"
Calculated Area: 424 sq. ft
Included: No

Heated: No
Finished: No
Enclosed: Yes
Contiguous: Yes
Permitted: Yes
Wet space: No
Addition: No
Conversion: No

810 Cherry Street, Paso Robles, San Luis Obispo County,
California, United States, 93446

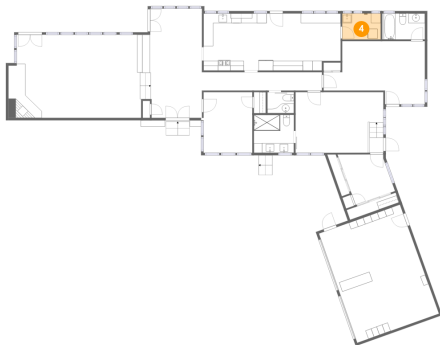
3 Floor 1 - Bath



Max Dimensions: 8'5" x 5'4"
Calculated Area: 47 sq. ft
Included: Yes

Heated: Yes
Finished: Yes
Enclosed: Yes
Contiguous: Yes
Permitted: Yes
Wet space: Yes
Addition: No
Conversion: No

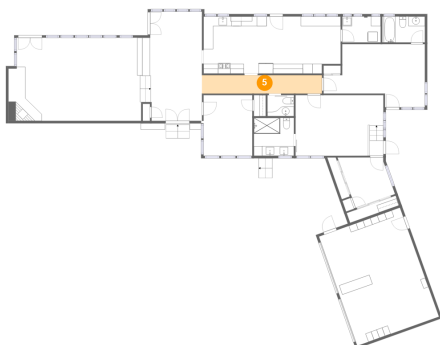
4 Floor 1 - Laundry



Max Dimensions: 7'11" x 5'4"
Calculated Area: 42 sq. ft
Included: Yes

Heated: Yes
Finished: Yes
Enclosed: Yes
Contiguous: Yes
Permitted: Yes
Wet space: No
Addition: No
Conversion: No

5 Floor 1 - Hall

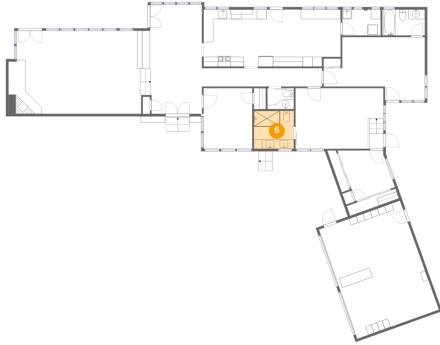


Max Dimensions: 24'8" x 3'9"
Calculated Area: 93 sq. ft
Included: Yes

Heated: Yes
Finished: Yes
Enclosed: Yes
Contiguous: Yes
Permitted: Yes
Wet space: No
Addition: No
Conversion: No

810 Cherry Street, Paso Robles, San Luis Obispo County,
California, United States, 93446

6 Floor 1 - Bath



Max Dimensions: 8'3" x 7'10"
Calculated Area: 64 sq. ft
Included: Yes

Heated: Yes
Finished: Yes
Enclosed: Yes
Contiguous: Yes
Permitted: Yes
Wet space: Yes
Addition: No
Conversion: No

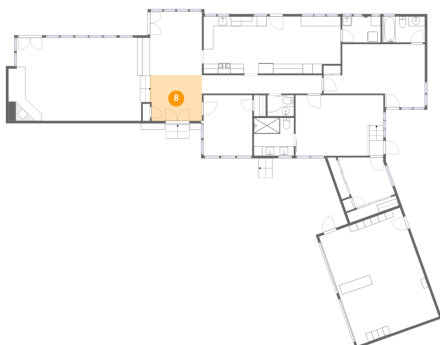
7 Floor 1 - Patio



Max Dimensions: 26'10" x 15'9"
Calculated Area: 188 sq. ft
Included: No

Heated: No
Finished: Yes
Enclosed: No
Contiguous: Yes
Permitted: Yes
Wet space: No
Addition: No
Conversion: No

8 Floor 1 - Foyer

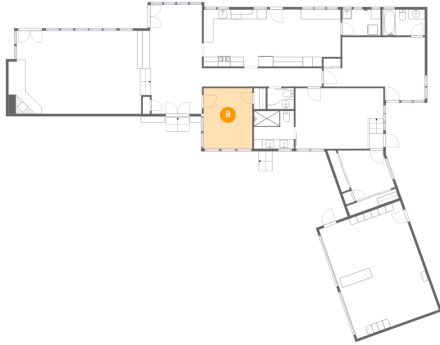


Max Dimensions: 10'6" x 9'5"
Calculated Area: 99 sq. ft
Included: Yes

Heated: Yes
Finished: Yes
Enclosed: Yes
Contiguous: Yes
Permitted: Yes
Wet space: No
Addition: No
Conversion: No

810 Cherry Street, Paso Robles, San Luis Obispo County,
California, United States, 93446

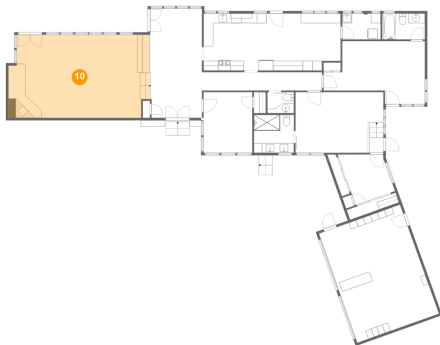
9 Floor 1 - Bedroom



Max Dimensions: 10'0" x 12'6"
Calculated Area: 125 sq. ft
Included: Yes

Heated: Yes
Finished: Yes
Enclosed: Yes
Contiguous: Yes
Permitted: Yes
Wet space: No
Addition: No
Conversion: No

10 Floor 1 - Living Room



Max Dimensions: 29'1" x 17'1"
Calculated Area: 480 sq. ft
Included: Yes

Heated: Yes
Finished: Yes
Enclosed: Yes
Contiguous: Yes
Permitted: Yes
Wet space: No
Addition: No
Conversion: No

11 Floor 1 - WC

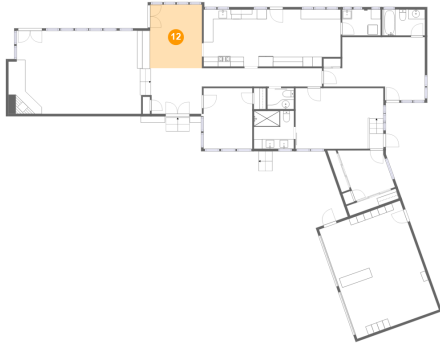


Max Dimensions: 5'5" x 4'4"
Calculated Area: 24 sq. ft
Included: Yes

Heated: Yes
Finished: Yes
Enclosed: Yes
Contiguous: Yes
Permitted: Yes
Wet space: Yes
Addition: No
Conversion: No

810 Cherry Street, Paso Robles, San Luis Obispo County,
California, United States, 93446

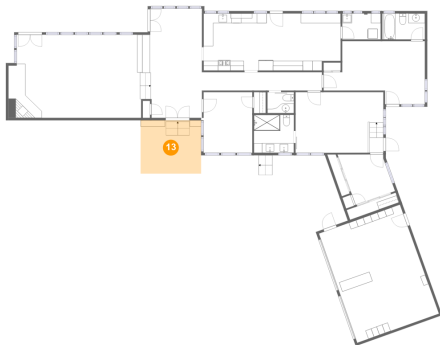
12 Floor 1 - Dining Area



Max Dimensions: 10'9" x 13'1"
Calculated Area: 140 sq. ft
Included: Yes

Heated: Yes
Finished: Yes
Enclosed: Yes
Contiguous: Yes
Permitted: Yes
Wet space: No
Addition: No
Conversion: No

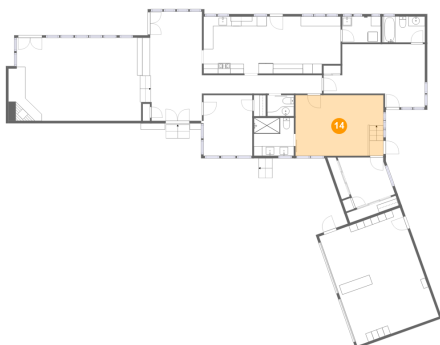
13 Floor 1 - Porch



Max Dimensions: 12'5" x 11'0"
Calculated Area: 137 sq. ft
Included: No

Heated: No
Finished: Yes
Enclosed: No
Contiguous: Yes
Permitted: Yes
Wet space: No
Addition: No
Conversion: No

14 Floor 1 - Primary Bedroom

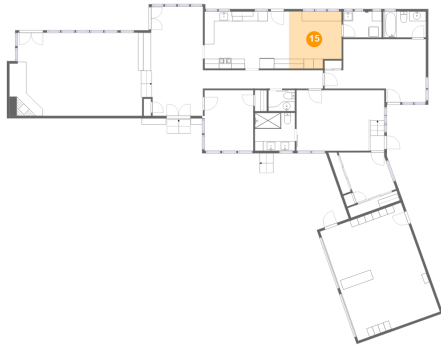


Max Dimensions: 18'1" x 12'6"
Calculated Area: 225 sq. ft
Included: Yes

Heated: Yes
Finished: Yes
Enclosed: Yes
Contiguous: Yes
Permitted: Yes
Wet space: No
Addition: No
Conversion: No

810 Cherry Street, Paso Robles, San Luis Obispo County,
California, United States, 93446

15 Floor 1 - Breakfast Nook



Max Dimensions: 10'10" x 11'9"
Calculated Area: 119 sq. ft
Included: Yes

Heated: Yes
Finished: Yes
Enclosed: Yes
Contiguous: Yes
Permitted: Yes
Wet space: No
Addition: No
Conversion: No

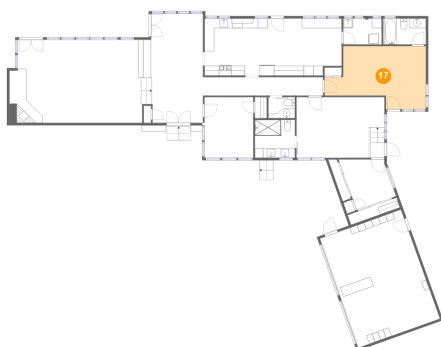
16 Floor 1 - Closet



Max Dimensions: 9'5" x 10'5"
Calculated Area: 82 sq. ft
Included: Yes

Heated: Yes
Finished: Yes
Enclosed: Yes
Contiguous: Yes
Permitted: Yes
Wet space: No
Addition: No
Conversion: No

17 Floor 1 - Bedroom



Max Dimensions: 20'10" x 13'0"
Calculated Area: 210 sq. ft
Included: Yes

Heated: Yes
Finished: Yes
Enclosed: Yes
Contiguous: Yes
Permitted: Yes
Wet space: No
Addition: No
Conversion: No