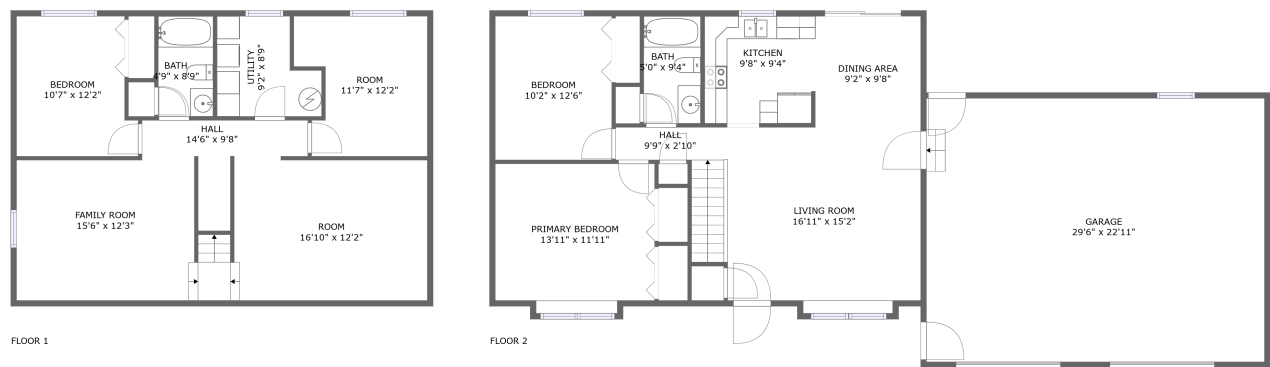



Home report


3545 Westview Dr,Spearfish,SD,US





Total Area: 1761 sq. ft
Below Ground: 822 sq. ft, Floor 2: 939 sq. ft
Excluded: Utility 67 sq. ft, Garage 678 sq. ft, Walls: 168 sq. ft

Property summary

 **2** Floors

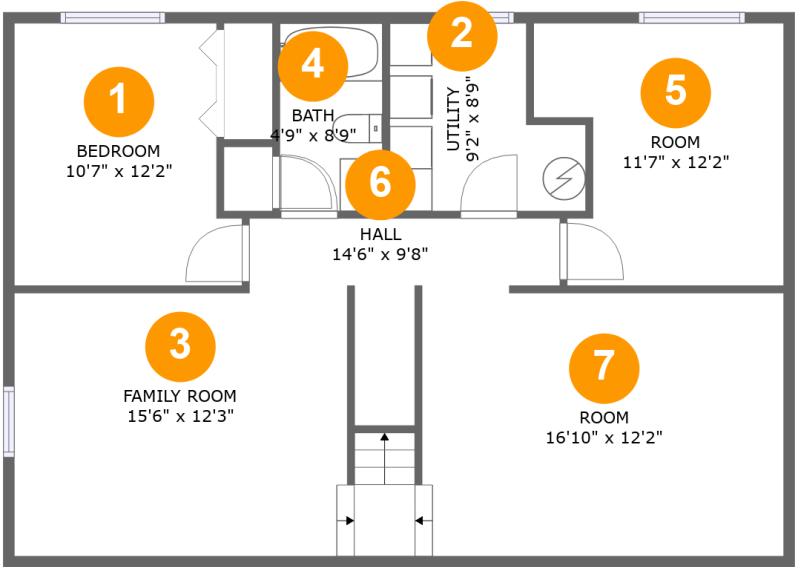
 **3** Bedrooms

 **2** Bathrooms

 **1** Garages

Home report

3545 Westview Dr,Spearfish,SD,US



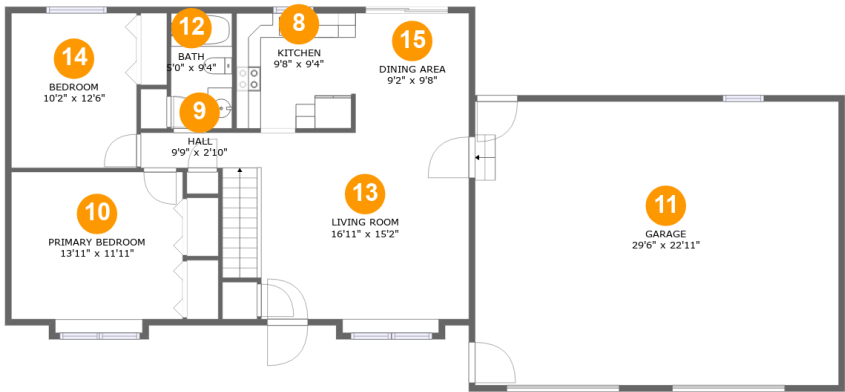
Room dimensions

Floor 1 Below ground Total:822sqft Excluded: 67sqft

#		Max Dimensions	sqft	Included
1	Bedroom	10'7" x 12'2"	119 sq. ft	Yes
2	Utility	9'2" x 8'9"	67 sq. ft	No
3	Family Room	15'6" x 12'3"	191 sq. ft	Yes
4	Bath	4'9" x 8'9"	42 sq. ft	Yes
5	Room	11'7" x 12'2"	124 sq. ft	Yes
6	Hall	14'6" x 9'8"	67 sq. ft	Yes
7	Room	16'10" x 12'2"	224 sq. ft	Yes

Home report

3545 Westview Dr,Spearfish,SD,US



Room dimensions

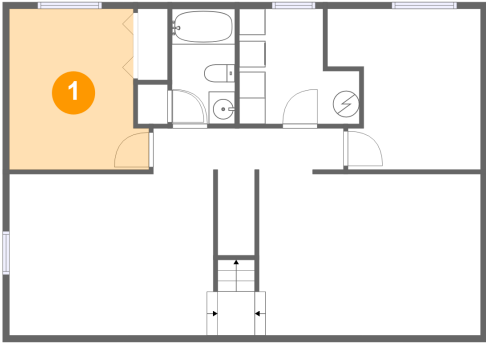
Floor 2

Total:939sqft

Excluded: 678sqft

#		Max Dimensions	sqft	Included
8	Kitchen	9'8" x 9'4"	90 sq. ft	Yes
9	Hall	9'9" x 2'10"	55 sq. ft	Yes
10	Primary Bedroom	13'11" x 11'11"	174 sq. ft	Yes
11	Garage	29'6" x 22'11"	678 sq. ft	No
12	Bath	5'0" x 9'4"	46 sq. ft	Yes
13	Living Room	16'11" x 15'2"	264 sq. ft	Yes
14	Bedroom	10'2" x 12'6"	127 sq. ft	Yes
15	Dining Area	9'2" x 9'8"	89 sq. ft	Yes

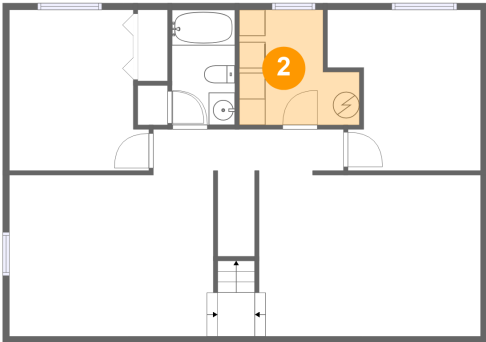
1 Floor 1 - Bedroom



Max Dimensions: 10'7" x 12'2"
Calculated Area: 119 sq. ft
Included: Yes

Heated: Yes
Finished: Yes
Enclosed: Yes
Contiguous: Yes
Permitted: Yes
Wet space: No
Addition: No
Conversion: No

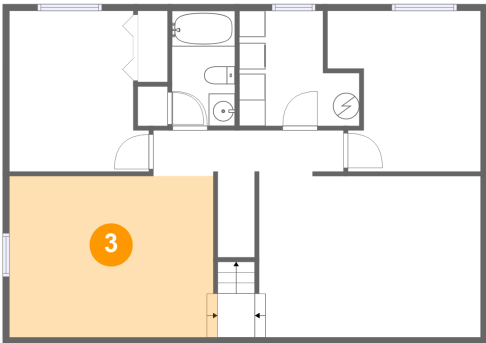
2 Floor 1 - Utility



Max Dimensions: 9'2" x 8'9"
Calculated Area: 67 sq. ft
Included: No

Heated: Yes
Finished: No
Enclosed: Yes
Contiguous: Yes
Permitted: Yes
Wet space: No
Addition: No
Conversion: No

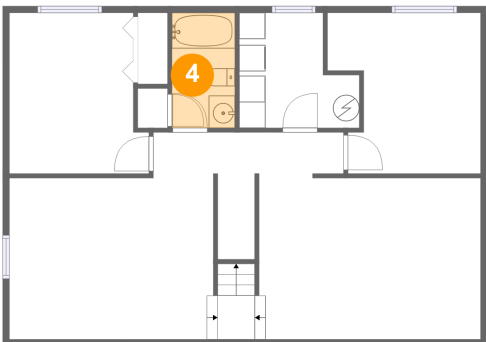
3 Floor 1 - Family Room



Max Dimensions: 15'6" x 12'3"
Calculated Area: 191 sq. ft
Included: Yes

Heated: Yes
Finished: Yes
Enclosed: Yes
Contiguous: Yes
Permitted: Yes
Wet space: No
Addition: No
Conversion: No

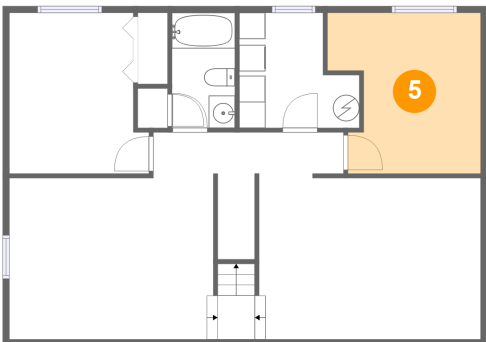
4 Floor 1 - Bath



Max Dimensions: 4'9" x 8'9"
Calculated Area: 42 sq. ft
Included: Yes

Heated: Yes
Finished: Yes
Enclosed: Yes
Contiguous: Yes
Permitted: Yes
Wet space: Yes
Addition: No
Conversion: No

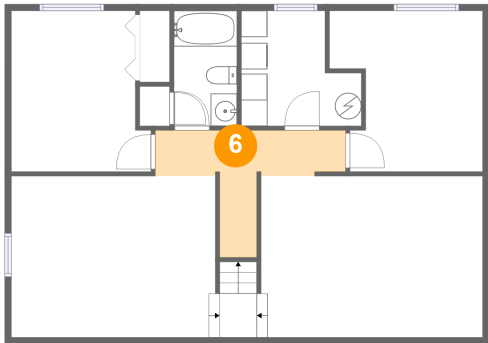
5 Floor 1 - Room



Max Dimensions: 11'7" x 12'2"
Calculated Area: 124 sq. ft
Included: Yes

Heated: Yes
Finished: Yes
Enclosed: Yes
Contiguous: Yes
Permitted: Yes
Wet space: No
Addition: No
Conversion: No

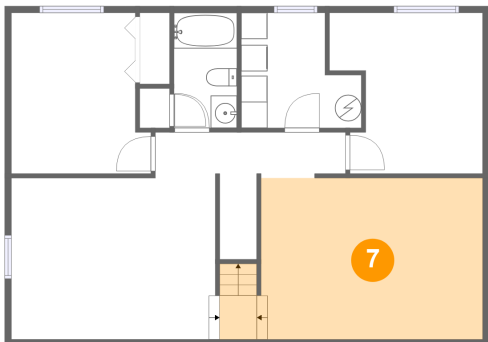
6 Floor 1 - Hall



Max Dimensions: 14'6" x 9'8"
Calculated Area: 67 sq. ft
Included: Yes

Heated: Yes
Finished: Yes
Enclosed: Yes
Contiguous: Yes
Permitted: Yes
Wet space: No
Addition: No
Conversion: No

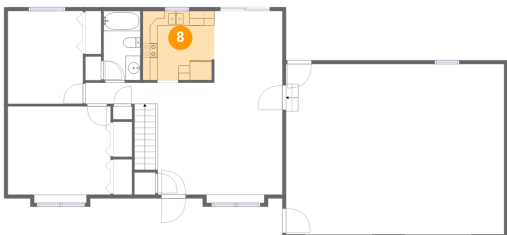
7 Floor 1 - Room



Max Dimensions: 16'10" x 12'2"
Calculated Area: 224 sq. ft
Included: Yes

Heated: Yes
Finished: Yes
Enclosed: Yes
Contiguous: Yes
Permitted: Yes
Wet space: No
Addition: No
Conversion: No

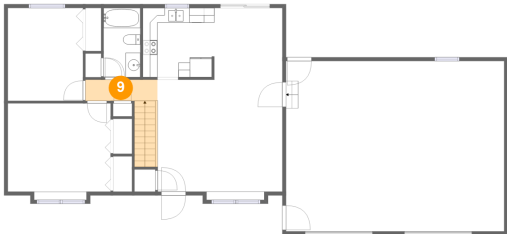
8 Floor 2 - Kitchen



Max Dimensions: 9'8" x 9'4"
Calculated Area: 90 sq. ft
Included: Yes

Heated: Yes
Finished: Yes
Enclosed: Yes
Contiguous: Yes
Permitted: Yes
Wet space: No
Addition: No
Conversion: No

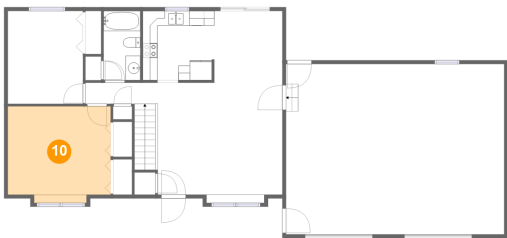
9 Floor 2 - Hall



Max Dimensions: 9'9" x 2'10"
Calculated Area: 55 sq. ft
Included: Yes

Heated: Yes
Finished: Yes
Enclosed: Yes
Contiguous: Yes
Permitted: Yes
Wet space: No
Addition: No
Conversion: No

10 Floor 2 - Primary Bedroom



Max Dimensions: 13'11" x 11'11"
Calculated Area: 174 sq. ft
Included: Yes

Heated: Yes
Finished: Yes
Enclosed: Yes
Contiguous: Yes
Permitted: Yes
Wet space: No
Addition: No
Conversion: No

11 Floor 2 - Garage



Max Dimensions: 29'6" x 22'11"
Calculated Area: 678 sq. ft
Included: No

Heated: No
Finished: No
Enclosed: Yes
Contiguous: Yes
Permitted: Yes
Wet space: No
Addition: No
Conversion: No

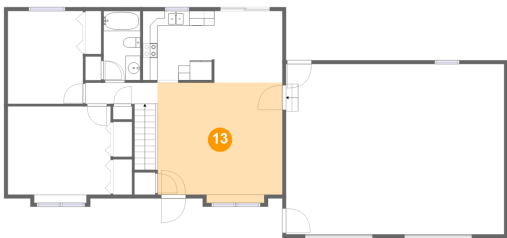
12 Floor 2 - Bath



Max Dimensions: 5'0" x 9'4"
Calculated Area: 46 sq. ft
Included: Yes

Heated: Yes
Finished: Yes
Enclosed: Yes
Contiguous: Yes
Permitted: Yes
Wet space: Yes
Addition: No
Conversion: No

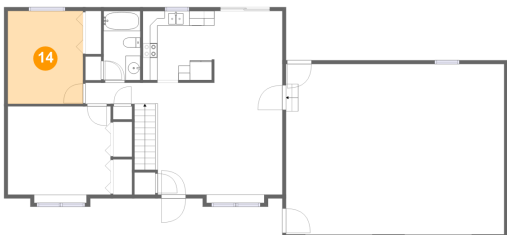
13 Floor 2 - Living Room



Max Dimensions: 16'11" x 15'2"
Calculated Area: 264 sq. ft
Included: Yes

Heated: Yes
Finished: Yes
Enclosed: Yes
Contiguous: Yes
Permitted: Yes
Wet space: No
Addition: No
Conversion: No

14 Floor 2 - Bedroom



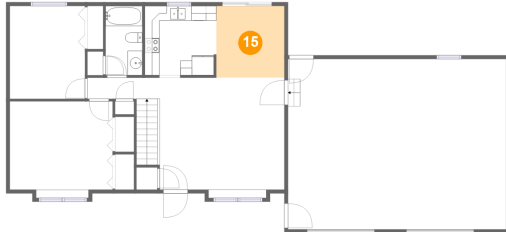
Max Dimensions: 10'2" x 12'6"
Calculated Area: 127 sq. ft
Included: Yes

Heated: Yes
Finished: Yes
Enclosed: Yes
Contiguous: Yes
Permitted: Yes
Wet space: No
Addition: No
Conversion: No

Home report

3545 Westview Dr,Spearfish,SD,US

15 Floor 2 - Dining Area



Max Dimensions: 9'2" x 9'8"
Calculated Area: 89 sq. ft
Included: Yes

Heated: Yes
Finished: Yes
Enclosed: Yes
Contiguous: Yes
Permitted: Yes
Wet space: No
Addition: No
Conversion: No