


# 3014 Lofton Road, Cave Spring, Roanoke, Roanoke County, Virginia, United States, 24018



## Property summary

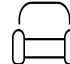
 **0** Garages

 **3** Bedrooms

 **2** Bathrooms

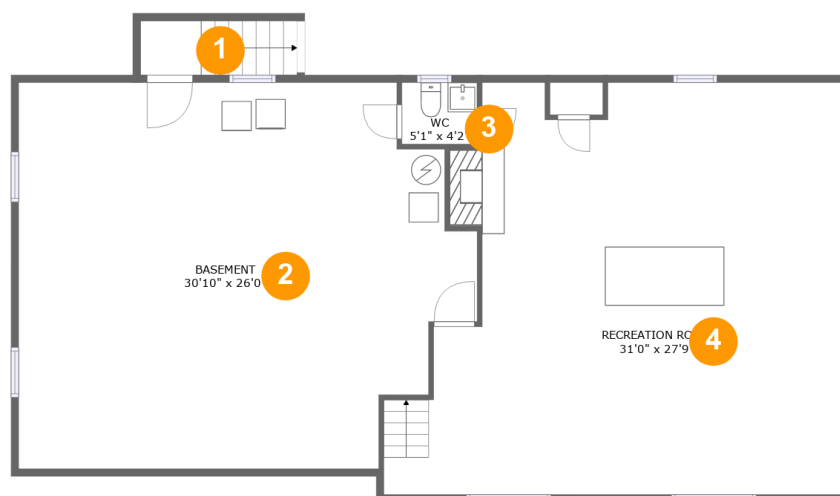
 **1** Half baths

 **2** Floors

 **2,411** Gross living area sqft

 **3,750** Total sqft

# 3014 Lofton Road, Cave Spring, Roanoke, Roanoke County, Virginia, United States, 24018



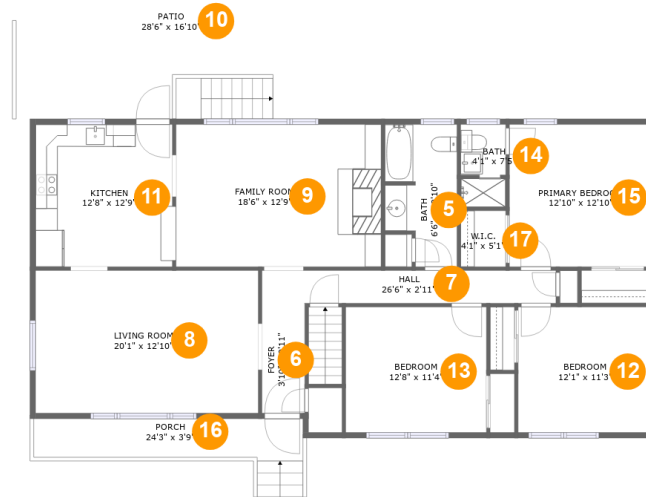
## Room dimensions

Floor 1

Total sqft: 1583 Living area: 827

#		Dimensions	sqft	Counted as living area
1	Outdoor	4'1" x 3'8"	39 sq. ft	No
2	Basement	30'10" x 26'0"	718 sq. ft	No
3	Bath	5'1" x 4'2"	21 sq. ft	Yes
4	Recreation Room	31'0" x 27'9"	735 sq. ft	Yes

# 3014 Lofton Road, Cave Spring, Roanoke, Roanoke County, Virginia, United States, 24018



## Room dimensions

Floor 2

Total sqft: 2167

Living area: 1584

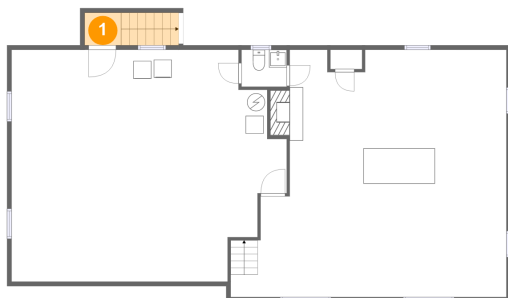
#		Dimensions	sqft	Counted as living area
5	Bath	6'6" x 12'10"	73 sq. ft	Yes
6	Entry	3'10" x 9'11"	38 sq. ft	Yes
7	Hall	26'6" x 2'11"	78 sq. ft	Yes
8	Living Room	20'1" x 12'10"	258 sq. ft	Yes
9	Living Room	18'6" x 12'9"	237 sq. ft	Yes
10	Outdoor	28'6" x 16'10"	484 sq. ft	No
11	Kitchen	12'8" x 12'9"	160 sq. ft	Yes
12	Bedroom	12'1" x 11'3"	137 sq. ft	Yes
13	Bedroom	12'8" x 11'4"	144 sq. ft	Yes
14	Bath	4'1" x 7'5"	29 sq. ft	Yes
15	Bedroom	12'10" x 12'10"	165 sq. ft	Yes

# 3014 Lofton Road, Cave Spring, Roanoke, Roanoke County, Virginia, United States, 24018

#		Dimensions	sqft	Counted as living area
16	Outdoor	24'3" x 3'9"	99 sq. ft	No
17	Cl	4'1" x 5'1"	21 sq. ft	Yes

# 3014 Lofton Road, Cave Spring, Roanoke, Roanoke County, Virginia, United States, 24018

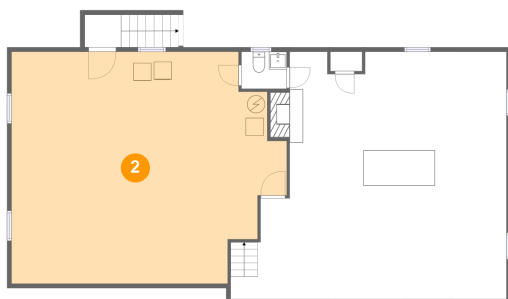
## 1 Floor 1 - Outdoor



Dimensions: 4'1" x 3'8"  
Area: 39 sq. ft  
Counted as living area: No

Heated: No  
Finished: No  
Enclosed: No  
Contiguous: Yes  
Permitted: No  
Wet space: No  
Addition: No  
Conversion: No

## 2 Floor 1 - Basement

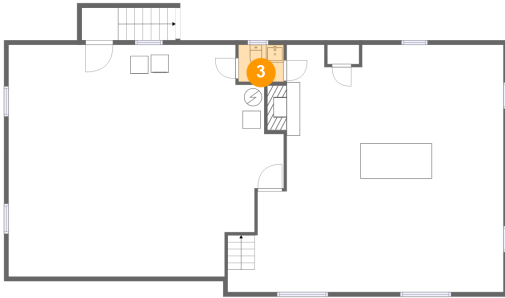


Dimensions: 30'10" x 26'0"  
Area: 718 sq. ft  
Counted as living area: No

Heated: Yes  
Finished: No  
Enclosed: Yes  
Contiguous: Yes  
Permitted: Yes  
Wet space: No  
Addition: No  
Conversion: No

# 3014 Lofton Road, Cave Spring, Roanoke, Roanoke County, Virginia, United States, 24018

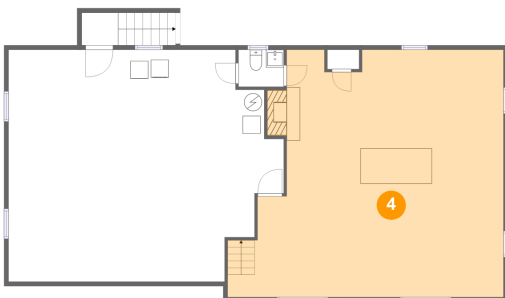
## 3 Floor 1 - Bath



Dimensions: 5'1" x 4'2"  
Area: 21 sq. ft  
Counted as living area: Yes

Heated: Yes  
Finished: Yes  
Enclosed: Yes  
Contiguous: Yes  
Permitted: Yes  
Wet space: Yes  
Addition: No  
Conversion: No

## 4 Floor 1 - Recreation Room



Dimensions: 31'0" x 27'9"  
Area: 735 sq. ft  
Counted as living area: Yes

Heated: Yes  
Finished: Yes  
Enclosed: Yes  
Contiguous: Yes  
Permitted: Yes  
Wet space: No  
Addition: No  
Conversion: No

## 5 Floor 2 - Bath



Dimensions: 6'6" x 12'10"  
Area: 73 sq. ft  
Counted as living area: Yes

Heated: Yes  
Finished: Yes  
Enclosed: Yes  
Contiguous: Yes  
Permitted: Yes  
Wet space: Yes  
Addition: No  
Conversion: No

# 3014 Lofton Road, Cave Spring, Roanoke, Roanoke County, Virginia, United States, 24018

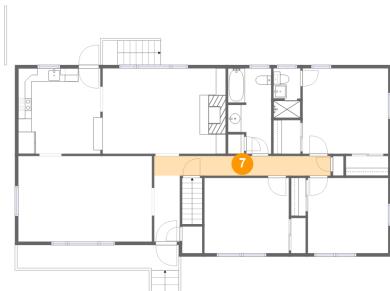
## 6 Floor 2 - Entry



Dimensions: 3'10" x 9'11"  
Area: 38 sq. ft  
Counted as living area: Yes

Heated: Yes  
Finished: Yes  
Enclosed: Yes  
Contiguous: Yes  
Permitted: Yes  
Wet space: No  
Addition: No  
Conversion: No

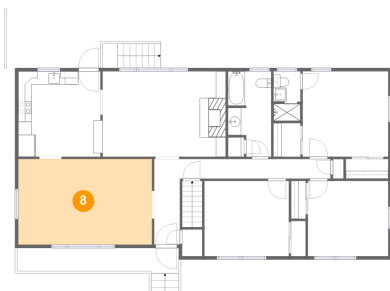
## 7 Floor 2 - Hall



Dimensions: 26'6" x 2'11"  
Area: 78 sq. ft  
Counted as living area: Yes

Heated: Yes  
Finished: Yes  
Enclosed: Yes  
Contiguous: Yes  
Permitted: Yes  
Wet space: No  
Addition: No  
Conversion: No

## 8 Floor 2 - Living Room



Dimensions: 20'1" x 12'10"  
Area: 258 sq. ft  
Counted as living area: Yes

Heated: Yes  
Finished: Yes  
Enclosed: Yes  
Contiguous: Yes  
Permitted: Yes  
Wet space: No  
Addition: No  
Conversion: No

# 3014 Lofton Road, Cave Spring, Roanoke, Roanoke County, Virginia, United States, 24018

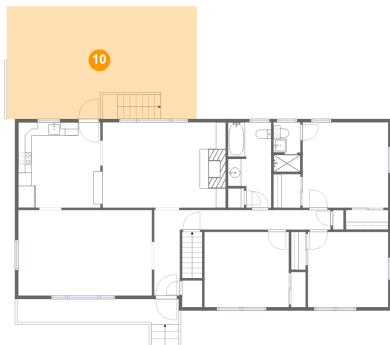
## 9 Floor 2 - Living Room



Dimensions: 18'6" x 12'9"  
Area: 237 sq. ft  
Counted as living area: Yes

Heated: Yes  
Finished: Yes  
Enclosed: Yes  
Contiguous: Yes  
Permitted: Yes  
Wet space: No  
Addition: No  
Conversion: No

## 10 Floor 2 - Outdoor



Dimensions: 28'6" x 16'10"  
Area: 484 sq. ft  
Counted as living area: No

Heated: No  
Finished: Yes  
Enclosed: No  
Contiguous: Yes  
Permitted: Yes  
Wet space: No  
Addition: No  
Conversion: No

## 11 Floor 2 - Kitchen



Dimensions: 12'8" x 12'9"  
Area: 160 sq. ft  
Counted as living area: Yes

Heated: Yes  
Finished: Yes  
Enclosed: Yes  
Contiguous: Yes  
Permitted: Yes  
Wet space: No  
Addition: No  
Conversion: No



# 3014 Lofton Road, Cave Spring, Roanoke, Roanoke County, Virginia, United States, 24018

## 12 Floor 2 - Bedroom



Dimensions: 12'1" x 11'3"  
Area: 137 sq. ft  
Counted as living area: Yes

Heated: Yes  
Finished: Yes  
Enclosed: Yes  
Contiguous: Yes  
Permitted: Yes  
Wet space: No  
Addition: No  
Conversion: No

## 13 Floor 2 - Bedroom



Dimensions: 12'8" x 11'4"  
Area: 144 sq. ft  
Counted as living area: Yes

Heated: Yes  
Finished: Yes  
Enclosed: Yes  
Contiguous: Yes  
Permitted: Yes  
Wet space: No  
Addition: No  
Conversion: No

## 14 Floor 2 - Bath



Dimensions: 4'1" x 7'5"  
Area: 29 sq. ft  
Counted as living area: Yes

Heated: Yes  
Finished: Yes  
Enclosed: Yes  
Contiguous: Yes  
Permitted: Yes  
Wet space: Yes  
Addition: No  
Conversion: No

# 3014 Lofton Road, Cave Spring, Roanoke, Roanoke County, Virginia, United States, 24018

## 15 Floor 2 - Bedroom



Dimensions: 12'10" x 12'10"  
Area: 165 sq. ft  
Counted as living area: Yes

Heated: Yes  
Finished: Yes  
Enclosed: Yes  
Contiguous: Yes  
Permitted: Yes  
Wet space: No  
Addition: No  
Conversion: No

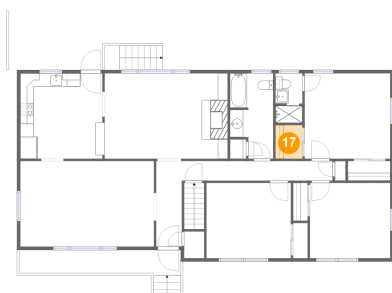
## 16 Floor 2 - Outdoor



Dimensions: 24'3" x 3'9"  
Area: 99 sq. ft  
Counted as living area: No

Heated: No  
Finished: Yes  
Enclosed: No  
Contiguous: Yes  
Permitted: Yes  
Wet space: No  
Addition: No  
Conversion: No

## 17 Floor 2 - Cl



Dimensions: 4'1" x 5'1"  
Area: 21 sq. ft  
Counted as living area: Yes

Heated: Yes  
Finished: Yes  
Enclosed: Yes  
Contiguous: Yes  
Permitted: Yes  
Wet space: No  
Addition: No  
Conversion: No