

Home report

117 White Thorn Road, Salem Township, New Alexandria,  
Westmoreland County, Pennsylvania, United States, 15670



**Total Area: 2084 sq. ft**

Below Ground: 0 sq. ft, Below Ground: 0 sq. ft, Floor 3: 1087 sq. ft, Floor 4: 997 sq. ft, Floor 5: 0 sq. ft

Excluded: Room 154 sq. ft, Undefined 29 sq. ft, Storage 253 sq. ft, Basement 720 sq. ft, Garage 969 sq. ft, Patio 712 sq. ft, Attic 670 sq. ft, Walls: 359 sq. ft

Property summary

**5** Floors

**4** Bedrooms

**1** Bathrooms

Home report

**117 White Thorn Road, Salem Township, New Alexandria,  
Westmoreland County, Pennsylvania, United States, 15670**



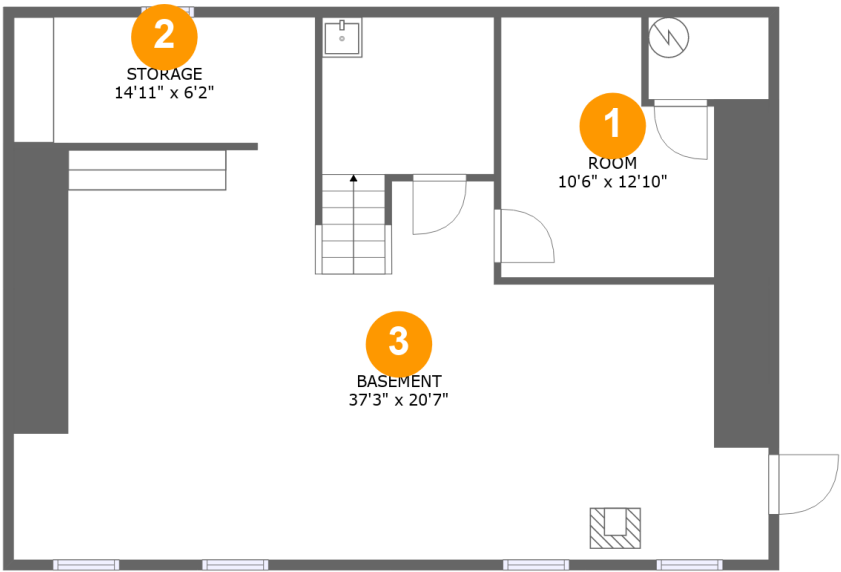
**1**  
Half baths



**1**  
Garages

Home report

117 White Thorn Road, Salem Township, New Alexandria,  
Westmoreland County, Pennsylvania, United States, 15670



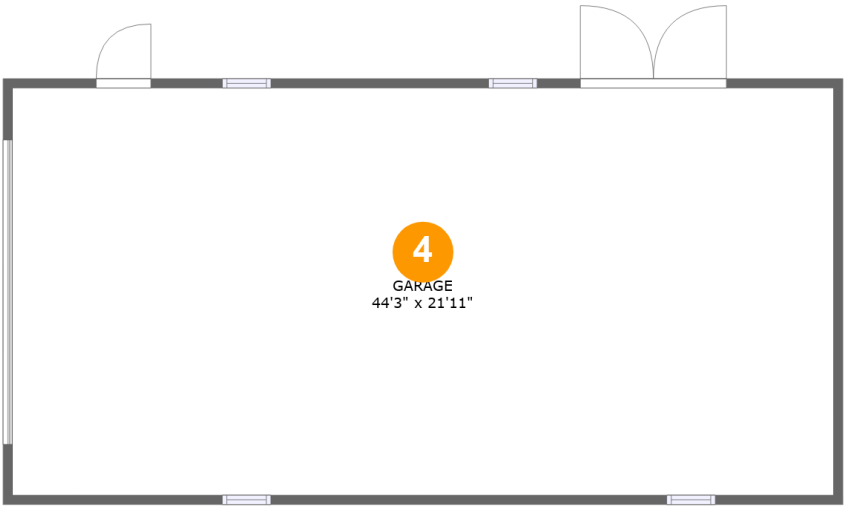
Room dimensions

Floor 1 Below ground Total:0sqft Excluded: 997sqft

#		Max Dimensions	sqft	Included
1	Room	10'6" x 12'10"	142 sq. ft	No
2	Storage	14'11" x 6'2"	92 sq. ft	No
3	Basement	37'3" x 20'7"	717 sq. ft	No

Home report

117 White Thorn Road, Salem Township, New Alexandria,  
Westmoreland County, Pennsylvania, United States, 15670



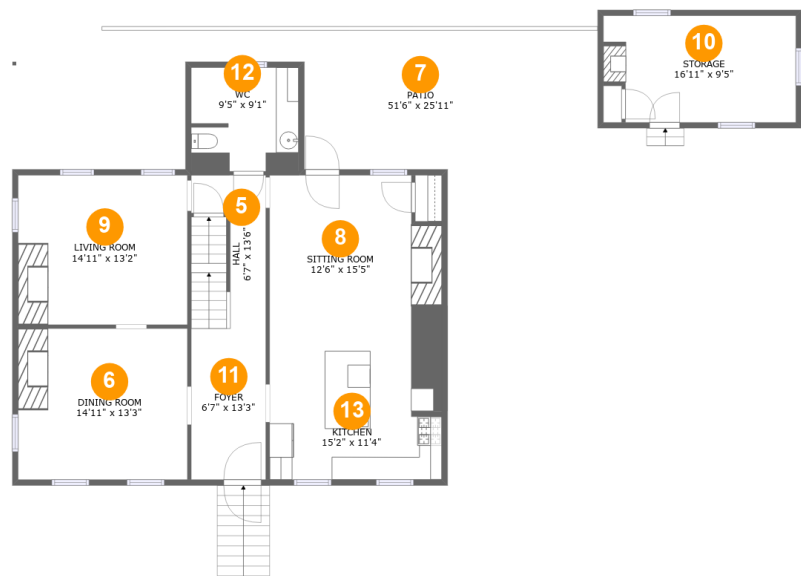
Room dimensions

Floor 2 Below ground Total:0sqft   Excluded: 969sqft

#		Max Dimensions	sqft	Included
4	Garage	44'3" x 21'11"	969 sq. ft	No

Home report

117 White Thorn Road, Salem Township, New Alexandria,  
Westmoreland County, Pennsylvania, United States, 15670

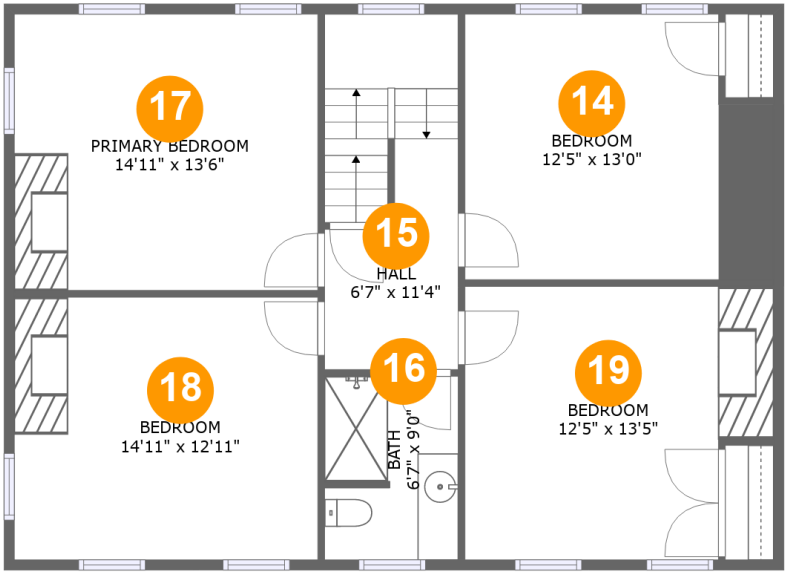


Room dimensions

Floor 3 Total:1087sqft   Excluded: 871sqft

#		Max Dimensions	sqft	Included
5	Hall	6'7" x 13'6"	85 sq. ft	Yes
6	Dining Room	14'11" x 13'3"	198 sq. ft	Yes
7	Patio	51'6" x 25'11"	712 sq. ft	No
8	Sitting Room	12'6" x 15'5"	223 sq. ft	Yes
9	Living Room	14'11" x 13'2"	196 sq. ft	Yes
10	Storage	16'11" x 9'5"	151 sq. ft	No
11	Foyer	6'7" x 13'3"	87 sq. ft	Yes
12	WC	9'5" x 9'1"	85 sq. ft	Yes
13	Kitchen	15'2" x 11'4"	170 sq. ft	Yes

117 White Thorn Road, Salem Township, New Alexandria,  
Westmoreland County, Pennsylvania, United States, 15670



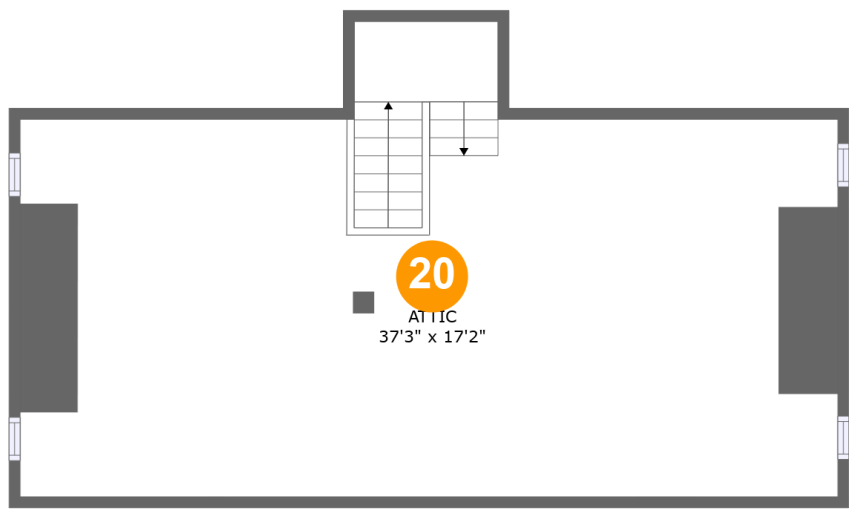
Room dimensions

Floor 4 Total:997sqft   Excluded: 0sqft

#		Max Dimensions	sqft	Included
14	Bedroom	12'5" x 13'0"	185 sq. ft	Yes
15	Hall	6'7" x 11'4"	112 sq. ft	Yes
16	Bath	6'7" x 9'0"	58 sq. ft	Yes
17	Primary Bedroom	14'11" x 13'6"	202 sq. ft	Yes
18	Bedroom	14'11" x 12'11"	192 sq. ft	Yes
19	Bedroom	12'5" x 13'5"	187 sq. ft	Yes

Home report

117 White Thorn Road, Salem Township, New Alexandria,  
Westmoreland County, Pennsylvania, United States, 15670

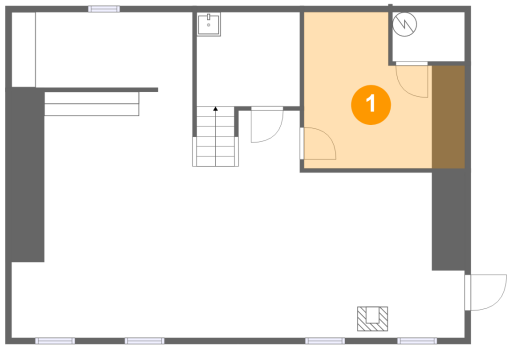


Room dimensions

Floor 5 Total:0sqft   Excluded: 670sqft

#		Max Dimensions	sqft	Included
20	Attic	37'3" x 17'2"	670 sq. ft	No

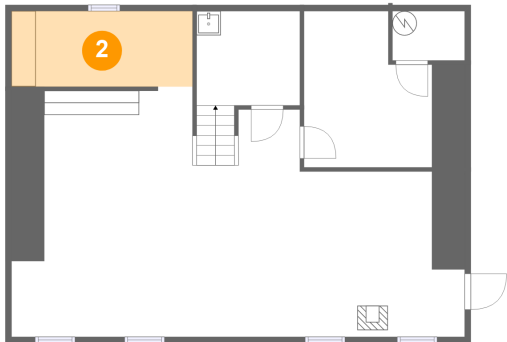
1 Floor 1 - Room



Max Dimensions: 10'6" x 12'10"  
Calculated Area: 142 sq. ft  
Included: No

Heated: Yes  
Finished: No  
Enclosed: Yes  
Contiguous: Yes  
Permitted: Yes  
Wet space: No  
Addition: No  
Conversion: No

2 Floor 1 - Storage



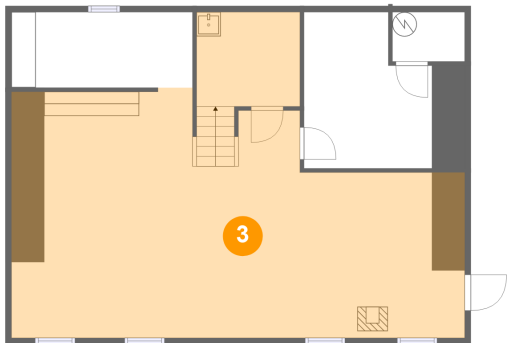
Max Dimensions: 14'11" x 6'2"  
Calculated Area: 92 sq. ft  
Included: No

Heated: No  
Finished: No  
Enclosed: No  
Contiguous: Yes  
Permitted: Yes  
Wet space: No  
Addition: No  
Conversion: No



117 White Thorn Road, Salem Township, New Alexandria,  
Westmoreland County, Pennsylvania, United States, 15670

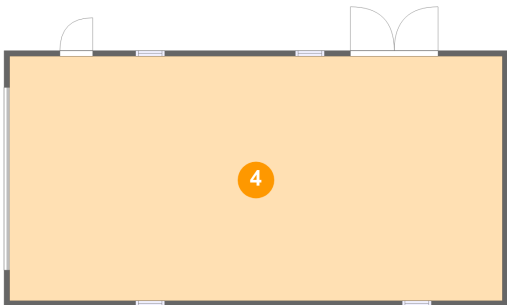
3 Floor 1 - Basement



Max Dimensions: 37'3" x 20'7"  
Calculated Area: 717 sq. ft  
Included: No

Heated: Yes  
Finished: No  
Enclosed: Yes  
Contiguous: Yes  
Permitted: Yes  
Wet space: No  
Addition: No  
Conversion: No

4 Floor 2 - Garage



Max Dimensions: 44'3" x 21'11"  
Calculated Area: 969 sq. ft  
Included: No

Heated: No  
Finished: No  
Enclosed: Yes  
Contiguous: Yes  
Permitted: Yes  
Wet space: No  
Addition: No  
Conversion: No

5 Floor 3 - Hall



Max Dimensions: 6'7" x 13'6"  
Calculated Area: 85 sq. ft  
Included: Yes

Heated: Yes  
Finished: Yes  
Enclosed: Yes  
Contiguous: Yes  
Permitted: Yes  
Wet space: No  
Addition: No  
Conversion: No

117 White Thorn Road, Salem Township, New Alexandria,  
Westmoreland County, Pennsylvania, United States, 15670

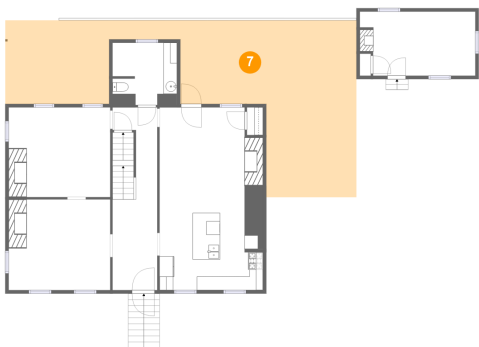
6 Floor 3 - Dining Room



Max Dimensions: 14'11" x 13'3"  
Calculated Area: 198 sq. ft  
Included: Yes

Heated: Yes  
Finished: Yes  
Enclosed: Yes  
Contiguous: Yes  
Permitted: Yes  
Wet space: No  
Addition: No  
Conversion: No

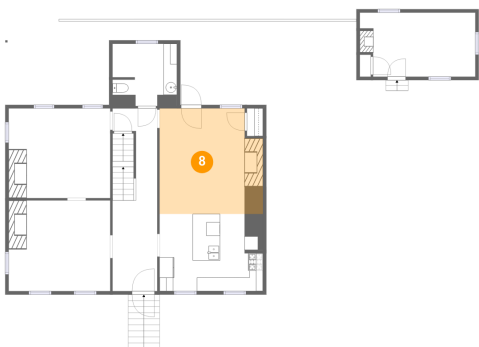
7 Floor 3 - Patio



Max Dimensions: 51'6" x 25'11"  
Calculated Area: 712 sq. ft  
Included: No

Heated: No  
Finished: Yes  
Enclosed: No  
Contiguous: Yes  
Permitted: Yes  
Wet space: No  
Addition: No  
Conversion: No

8 Floor 3 - Sitting Room



Max Dimensions: 12'6" x 15'5"  
Calculated Area: 223 sq. ft  
Included: Yes

Heated: Yes  
Finished: Yes  
Enclosed: Yes  
Contiguous: Yes  
Permitted: Yes  
Wet space: No  
Addition: No  
Conversion: No

9 Floor 3 - Living Room



Max Dimensions: 14'11" x 13'2"  
Calculated Area: 196 sq. ft  
Included: Yes

Heated: Yes  
Finished: Yes  
Enclosed: Yes  
Contiguous: Yes  
Permitted: Yes  
Wet space: No  
Addition: No  
Conversion: No

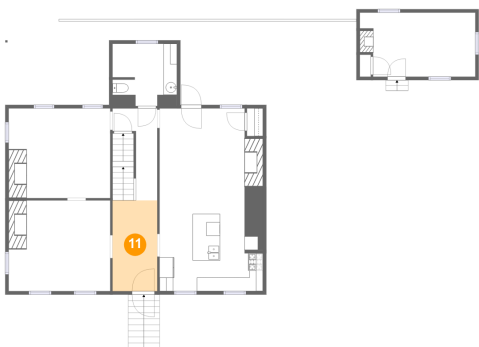
10 Floor 3 - Storage



Max Dimensions: 16'11" x 9'5"  
Calculated Area: 151 sq. ft  
Included: No

Heated: No  
Finished: No  
Enclosed: No  
Contiguous: Yes  
Permitted: Yes  
Wet space: No  
Addition: No  
Conversion: No

11 Floor 3 - Foyer



Max Dimensions: 6'7" x 13'3"  
Calculated Area: 87 sq. ft  
Included: Yes

Heated: Yes  
Finished: Yes  
Enclosed: Yes  
Contiguous: Yes  
Permitted: Yes  
Wet space: No  
Addition: No  
Conversion: No

## Home report

117 White Thorn Road, Salem Township, New Alexandria,  
Westmoreland County, Pennsylvania, United States, 15670

### 12 Floor 3 - WC



Max Dimensions: 9'5" x 9'1"  
Calculated Area: 85 sq. ft  
Included: Yes

Heated: Yes  
Finished: Yes  
Enclosed: Yes  
Contiguous: Yes  
Permitted: Yes  
Wet space: Yes  
Addition: No  
Conversion: No

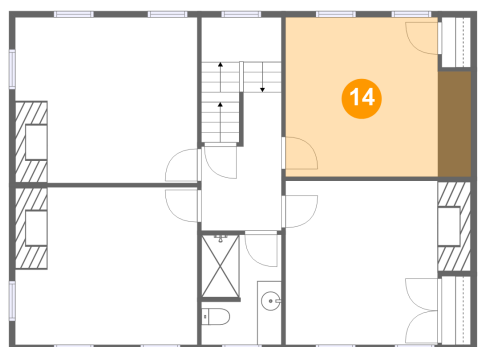
### 13 Floor 3 - Kitchen



Max Dimensions: 15'2" x 11'4"  
Calculated Area: 170 sq. ft  
Included: Yes

Heated: Yes  
Finished: Yes  
Enclosed: Yes  
Contiguous: Yes  
Permitted: Yes  
Wet space: No  
Addition: No  
Conversion: No

### 14 Floor 4 - Bedroom

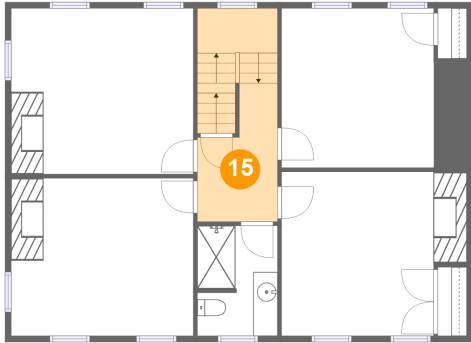


Max Dimensions: 12'5" x 13'0"  
Calculated Area: 185 sq. ft  
Included: Yes

Heated: Yes  
Finished: Yes  
Enclosed: Yes  
Contiguous: Yes  
Permitted: Yes  
Wet space: No  
Addition: No  
Conversion: No

117 White Thorn Road, Salem Township, New Alexandria,  
Westmoreland County, Pennsylvania, United States, 15670

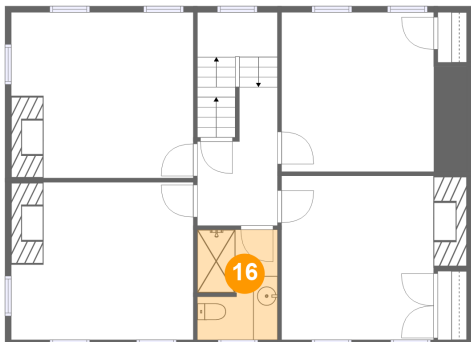
### 15 Floor 4 - Hall



Max Dimensions: 6'7" x 11'4"  
Calculated Area: 112 sq. ft  
Included: Yes

Heated: Yes  
Finished: Yes  
Enclosed: Yes  
Contiguous: Yes  
Permitted: Yes  
Wet space: No  
Addition: No  
Conversion: No

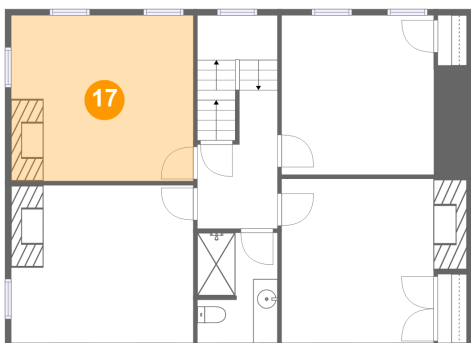
### 16 Floor 4 - Bath



Max Dimensions: 6'7" x 9'0"  
Calculated Area: 58 sq. ft  
Included: Yes

Heated: Yes  
Finished: Yes  
Enclosed: Yes  
Contiguous: Yes  
Permitted: Yes  
Wet space: Yes  
Addition: No  
Conversion: No

### 17 Floor 4 - Primary Bedroom

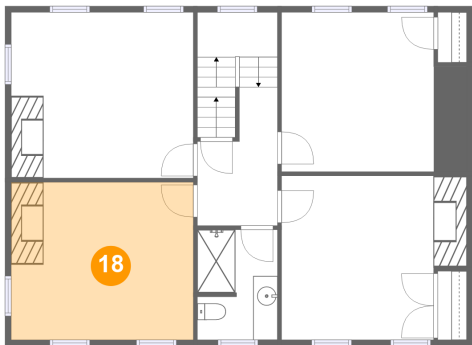


Max Dimensions: 14'11" x 13'6"  
Calculated Area: 202 sq. ft  
Included: Yes

Heated: Yes  
Finished: Yes  
Enclosed: Yes  
Contiguous: Yes  
Permitted: Yes  
Wet space: No  
Addition: No  
Conversion: No

117 White Thorn Road, Salem Township, New Alexandria,  
Westmoreland County, Pennsylvania, United States, 15670

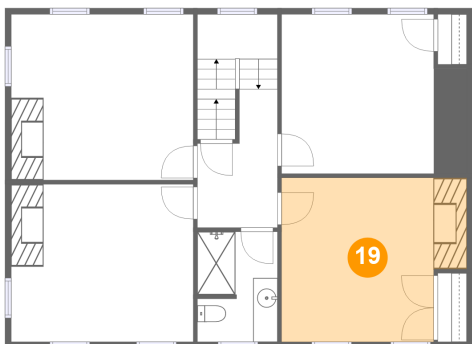
18 Floor 4 - Bedroom



Max Dimensions: 14'11" x 12'11"  
Calculated Area: 192 sq. ft  
Included: Yes

Heated: Yes  
Finished: Yes  
Enclosed: Yes  
Contiguous: Yes  
Permitted: Yes  
Wet space: No  
Addition: No  
Conversion: No

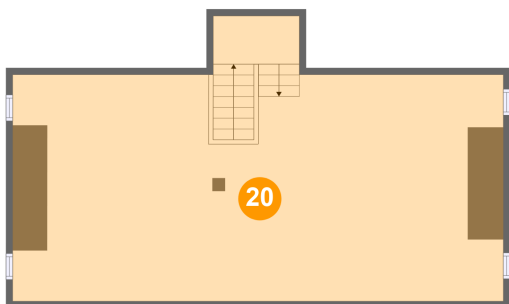
19 Floor 4 - Bedroom



Max Dimensions: 12'5" x 13'5"  
Calculated Area: 187 sq. ft  
Included: Yes

Heated: Yes  
Finished: Yes  
Enclosed: Yes  
Contiguous: Yes  
Permitted: Yes  
Wet space: No  
Addition: No  
Conversion: No

20 Floor 5 - Attic



Max Dimensions: 37'3" x 17'2"  
Calculated Area: 670 sq. ft  
Included: No

Heated: No  
Finished: No  
Enclosed: Yes  
Contiguous: Yes  
Permitted: Yes  
Wet space: No  
Addition: No  
Conversion: No