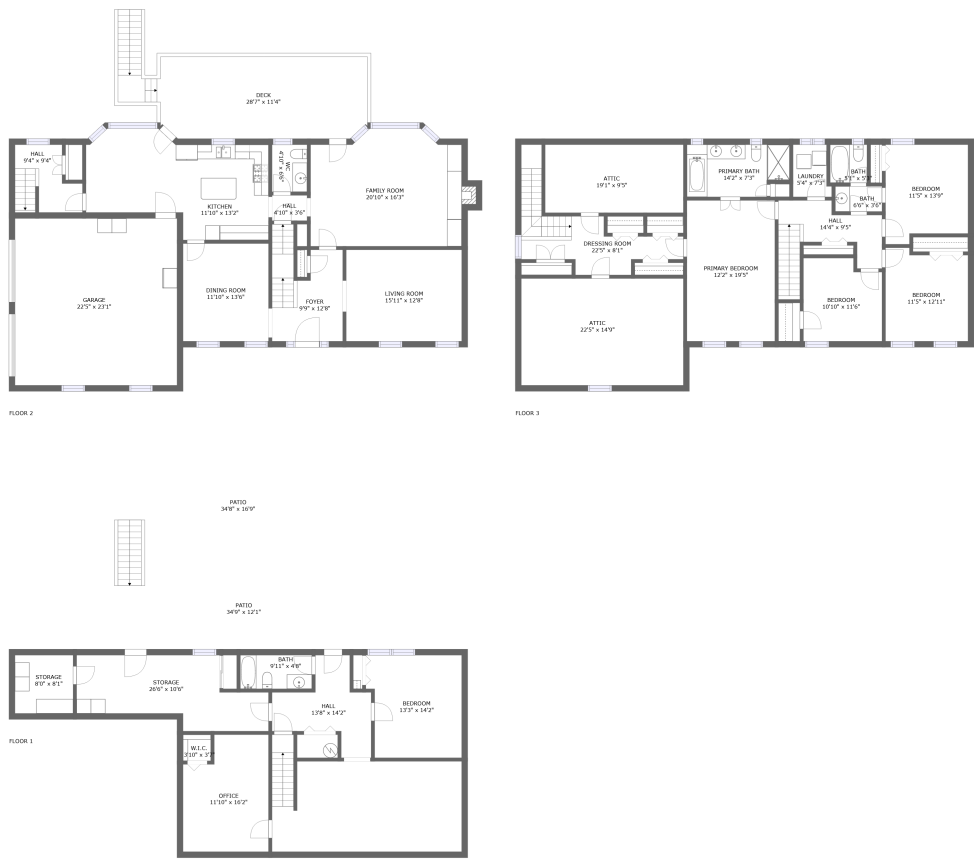




Home report


196 Buckingham Ct, Roanoke, VA, United States





Property summary


 **1** Garages


 **5** Bedrooms

 **3** Bathrooms

 **1** Half baths

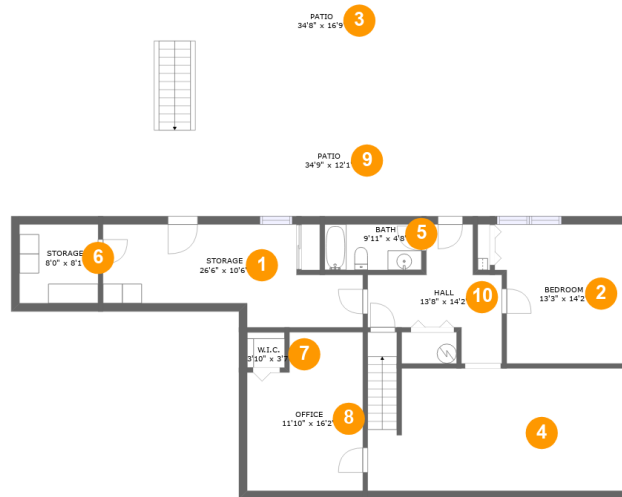
 **3** Floors

 **3,890** Gross living area sqft

 **6,672** Total sqft

## Home report

# 196 Buckingham Ct, Roanoke, VA, United States



## Room dimensions

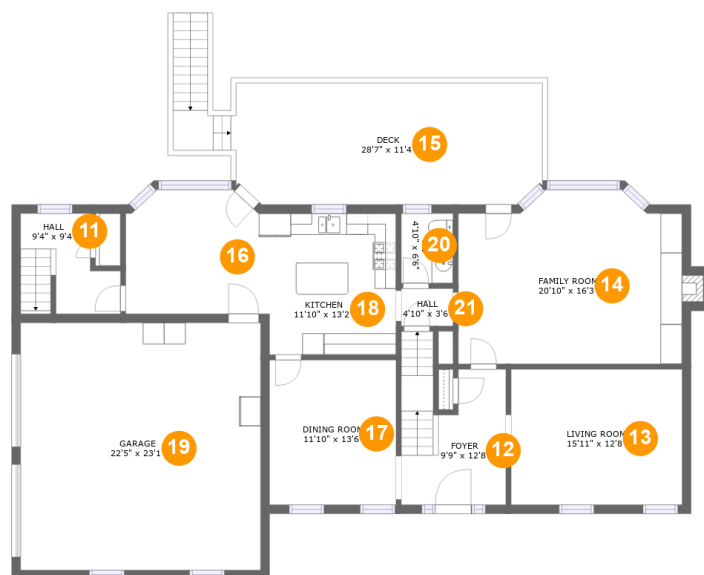
### Floor 1

Total sqft: 2304 Living area: 1055

#		Dimensions	sqft	Counted as living area
1	Storage	26'6" x 10'6"	207 sq. ft	No
2	Bedroom	13'3" x 14'2"	176 sq. ft	Yes
3	Patio	34'8" x 16'9"	501 sq. ft	No
4	Rec Room	26'2" x 12'6"	335 sq. ft	Yes
5	Bath	9'11" x 4'8"	46 sq. ft	Yes
6	Storage	8'0" x 8'1"	65 sq. ft	No
7	W.I.C.	3'10" x 3'7"	14 sq. ft	Yes
8	Office	11'10" x 16'2"	173 sq. ft	Yes
9	Patio	34'9" x 12'1"	419 sq. ft	No
10	Hall	13'8" x 14'2"	113 sq. ft	Yes

## Home report

196 Buckingham Ct, Roanoke, VA, United States

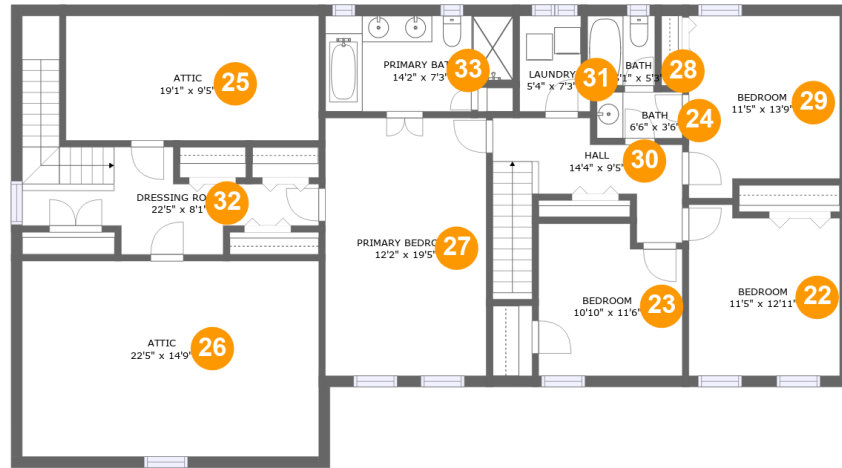


## Room dimensions

Floor 2

Total sqft: 2394 Living area: 1458

#		Dimensions	sqft	Counted as living area
11	Hall	9'4" x 9'4"	70 sq. ft	Yes
12	Foyer	9'9" x 12'8"	124 sq. ft	Yes
13	Living Room	15'11" x 12'8"	201 sq. ft	Yes
14	Family Room	20'10" x 16'3"	319 sq. ft	Yes
15	Deck	28'7" x 11'4"	368 sq. ft	No
16	Breakfast Area	13'5" x 11'7"	146 sq. ft	Yes
17	Dining Room	11'10" x 13'6"	159 sq. ft	Yes
18	Kitchen	11'10" x 13'2"	155 sq. ft	Yes
19	Garage	22'5" x 23'1"	516 sq. ft	No
20	WC	4'10" x 6'6"	31 sq. ft	Yes
21	Hall	4'10" x 3'6"	17 sq. ft	Yes



## Room dimensions

### Floor 3

Total sqft: 1974    Living area: 1377

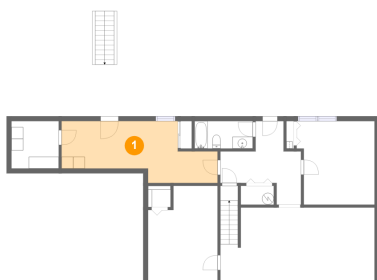
#		Dimensions	sqft	Counted as living area
22	Bedroom	11'5" x 12'11"	139 sq. ft	Yes
23	Bedroom	10'10" x 11'6"	117 sq. ft	Yes
24	Bath	6'6" x 3'6"	22 sq. ft	Yes
25	Attic	19'1" x 9'5"	42 sq. ft	No
26	Attic	22'5" x 14'9"	121 sq. ft	No
27	Primary Bedroom	12'2" x 19'5"	236 sq. ft	Yes
28	Bath	5'1" x 5'3"	27 sq. ft	Yes
29	Bedroom	11'5" x 13'9"	145 sq. ft	Yes
30	Hall	14'4" x 9'5"	104 sq. ft	Yes
31	Laundry	5'4" x 7'3"	34 sq. ft	Yes
32	Dressing Room	22'5" x 8'1"	126 sq. ft	Yes

Home report

## 196 Buckingham Ct, Roanoke, VA, United States

#		Dimensions	sqft	Counted as living area
33	Primary Bath	14'2" x 7'3"	95 sq. ft	Yes

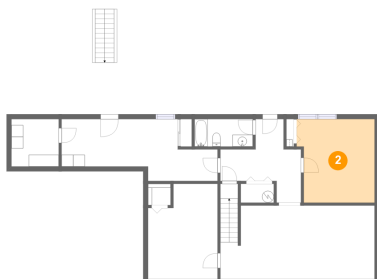
## 1 Floor 1 - Storage



Dimensions: 26'6" x 10'6"  
Area: 207 sq. ft  
Counted as living area: No

Heated: No  
Finished: No  
Enclosed: No  
Contiguous: No  
Permitted: Yes  
Wet space: No  
Addition: No  
Conversion: No

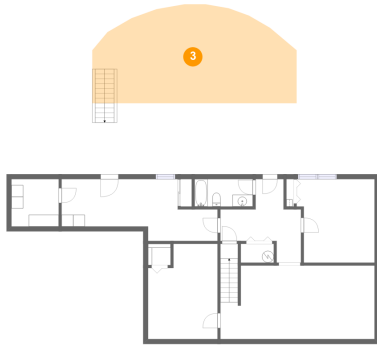
## 2 Floor 1 - Bedroom



Dimensions: 13'3" x 14'2"  
Area: 176 sq. ft  
Counted as living area: Yes

Heated: Yes  
Finished: Yes  
Enclosed: Yes  
Contiguous: Yes  
Permitted: Yes  
Wet space: No  
Addition: No  
Conversion: No

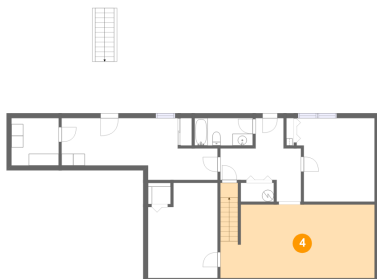
### 3 Floor 1 - Patio



Dimensions: 34'8" x 16'9"  
Area: 501 sq. ft  
Counted as living area: No

Heated: No  
Finished: Yes  
Enclosed: No  
Contiguous: No  
Permitted: Yes  
Wet space: No  
Addition: No  
Conversion: No

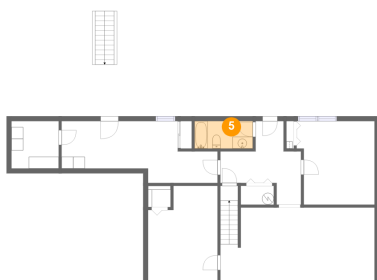
### 4 Floor 1 - Rec Room



Dimensions: 26'2" x 12'6"  
Area: 335 sq. ft  
Counted as living area: Yes

Heated: Yes  
Finished: Yes  
Enclosed: Yes  
Contiguous: Yes  
Permitted: Yes  
Wet space: No  
Addition: No  
Conversion: No

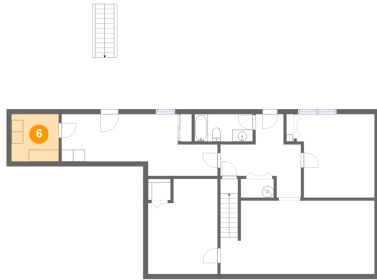
### 5 Floor 1 - Bath



Dimensions: 9'11" x 4'8"  
Area: 46 sq. ft  
Counted as living area: Yes

Heated: Yes  
Finished: Yes  
Enclosed: Yes  
Contiguous: Yes  
Permitted: Yes  
Wet space: Yes  
Addition: No  
Conversion: No

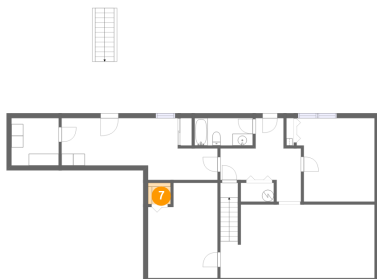
## 6 Floor 1 - Storage



Dimensions: 8'0" x 8'1"  
Area: 65 sq. ft  
Counted as living area: No

Heated: No  
Finished: No  
Enclosed: No  
Contiguous: No  
Permitted: Yes  
Wet space: No  
Addition: No  
Conversion: No

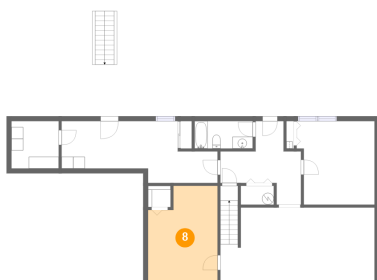
## 7 Floor 1 - W.I.C.



Dimensions: 3'10" x 3'7"  
Area: 14 sq. ft  
Counted as living area: Yes

Heated: Yes  
Finished: Yes  
Enclosed: Yes  
Contiguous: Yes  
Permitted: Yes  
Wet space: No  
Addition: No  
Conversion: No

## 8 Floor 1 - Office

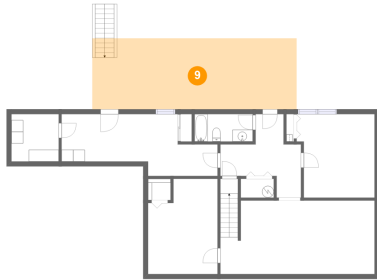


Dimensions: 11'10" x 16'2"  
Area: 173 sq. ft  
Counted as living area: Yes

Heated: Yes  
Finished: Yes  
Enclosed: Yes  
Contiguous: Yes  
Permitted: Yes  
Wet space: No  
Addition: No  
Conversion: No



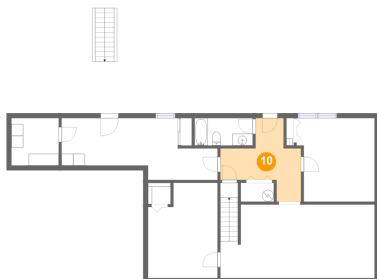
## 9 Floor 1 - Patio



Dimensions: 34'9" x 12'1"  
Area: 419 sq. ft  
Counted as living area: No

Heated: No  
Finished: Yes  
Enclosed: No  
Contiguous: No  
Permitted: Yes  
Wet space: No  
Addition: No  
Conversion: No

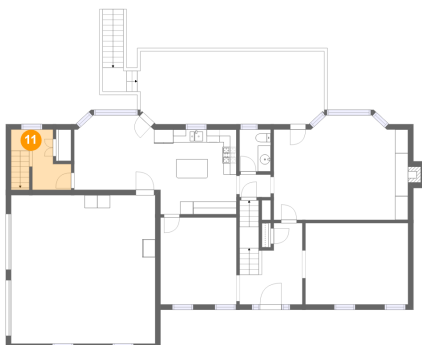
## 10 Floor 1 - Hall



Dimensions: 13'8" x 14'2"  
Area: 113 sq. ft  
Counted as living area: Yes

Heated: Yes  
Finished: Yes  
Enclosed: Yes  
Contiguous: Yes  
Permitted: Yes  
Wet space: No  
Addition: No  
Conversion: No

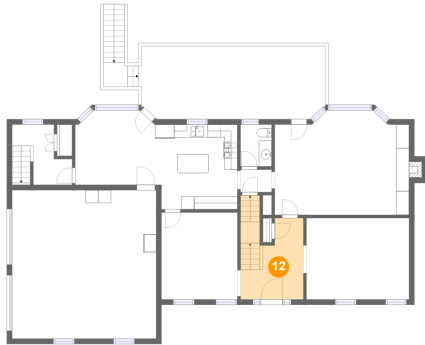
## 11 Floor 2 - Hall



Dimensions: 9'4" x 9'4"  
Area: 70 sq. ft  
Counted as living area: Yes

Heated: Yes  
Finished: Yes  
Enclosed: Yes  
Contiguous: Yes  
Permitted: Yes  
Wet space: No  
Addition: No  
Conversion: No

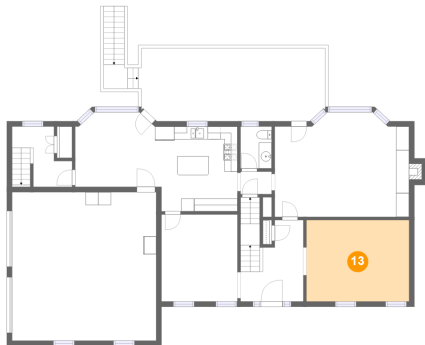
## 12 Floor 2 - Foyer



Dimensions: 9'9" x 12'8"  
Area: 124 sq. ft  
Counted as living area: Yes

Heated: Yes  
Finished: Yes  
Enclosed: Yes  
Contiguous: Yes  
Permitted: Yes  
Wet space: No  
Addition: No  
Conversion: No

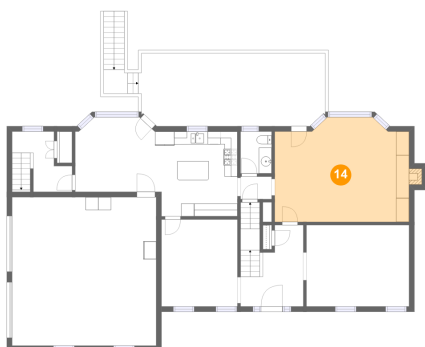
## 13 Floor 2 - Living Room



Dimensions: 15'11" x 12'8"  
Area: 201 sq. ft  
Counted as living area: Yes

Heated: Yes  
Finished: Yes  
Enclosed: Yes  
Contiguous: Yes  
Permitted: Yes  
Wet space: No  
Addition: No  
Conversion: No

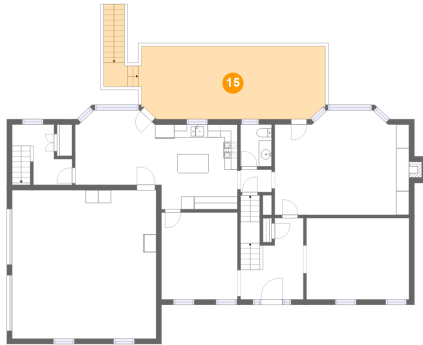
## 14 Floor 2 - Family Room



Dimensions: 20'10" x 16'3"  
Area: 319 sq. ft  
Counted as living area: Yes

Heated: Yes  
Finished: Yes  
Enclosed: Yes  
Contiguous: Yes  
Permitted: Yes  
Wet space: No  
Addition: No  
Conversion: No

## 15 Floor 2 - Deck



Dimensions: 28'7" x 11'4"  
Area: 368 sq. ft  
Counted as living area: No

Heated: No  
Finished: Yes  
Enclosed: No  
Contiguous: No  
Permitted: Yes  
Wet space: No  
Addition: No  
Conversion: No

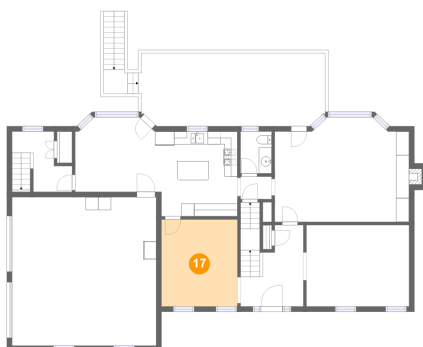
## 16 Floor 2 - Breakfast Area



Dimensions: 13'5" x 11'7"  
Area: 146 sq. ft  
Counted as living area: Yes

Heated: Yes  
Finished: Yes  
Enclosed: Yes  
Contiguous: Yes  
Permitted: Yes  
Wet space: No  
Addition: No  
Conversion: No

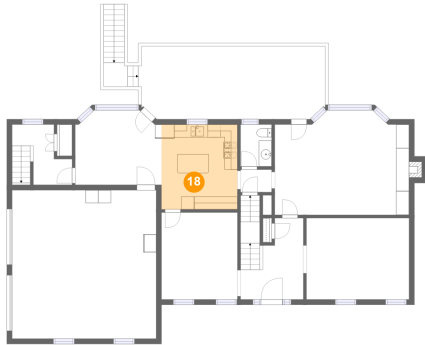
## 17 Floor 2 - Dining Room



Dimensions: 11'10" x 13'6"  
Area: 159 sq. ft  
Counted as living area: Yes

Heated: Yes  
Finished: Yes  
Enclosed: Yes  
Contiguous: Yes  
Permitted: Yes  
Wet space: No  
Addition: No  
Conversion: No

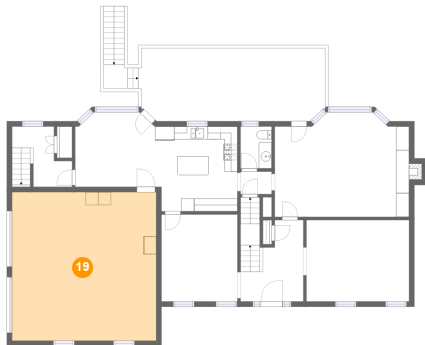
## 18 Floor 2 - Kitchen



Dimensions: 11'10" x 13'2"  
Area: 155 sq. ft  
Counted as living area: Yes

Heated: Yes  
Finished: Yes  
Enclosed: Yes  
Contiguous: Yes  
Permitted: Yes  
Wet space: No  
Addition: No  
Conversion: No

## 19 Floor 2 - Garage



Dimensions: 22'5" x 23'1"  
Area: 516 sq. ft  
Counted as living area: No

Heated: No  
Finished: No  
Enclosed: Yes  
Contiguous: No  
Permitted: Yes  
Wet space: No  
Addition: No  
Conversion: No

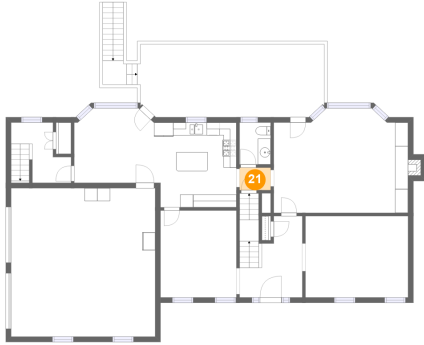
## 20 Floor 2 - WC



Dimensions: 4'10" x 6'6"  
Area: 31 sq. ft  
Counted as living area: Yes

Heated: Yes  
Finished: Yes  
Enclosed: Yes  
Contiguous: Yes  
Permitted: Yes  
Wet space: Yes  
Addition: No  
Conversion: No

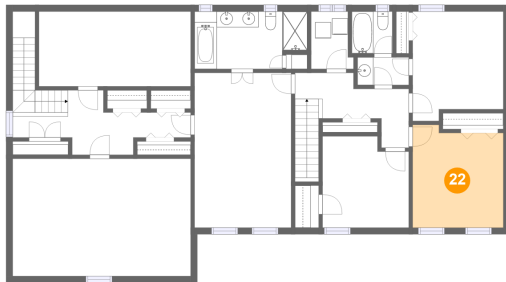
## 21 Floor 2 - Hall



Dimensions: 4'10" x 3'6"  
Area: 17 sq. ft  
Counted as living area: Yes

Heated: Yes  
Finished: Yes  
Enclosed: Yes  
Contiguous: Yes  
Permitted: Yes  
Wet space: No  
Addition: No  
Conversion: No

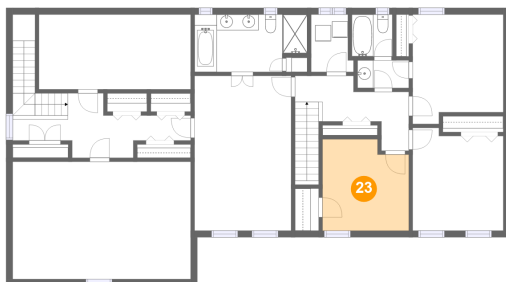
## 22 Floor 3 - Bedroom



Dimensions: 11'5" x 12'11"  
Area: 139 sq. ft  
Counted as living area: Yes

Heated: Yes  
Finished: Yes  
Enclosed: Yes  
Contiguous: Yes  
Permitted: Yes  
Wet space: No  
Addition: No  
Conversion: No

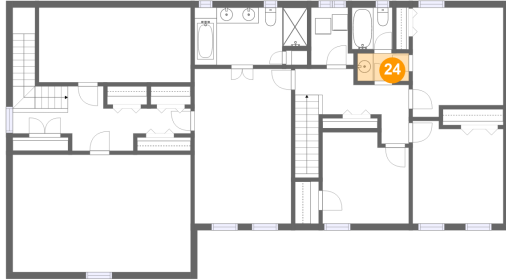
## 23 Floor 3 - Bedroom



Dimensions: 10'10" x 11'6"  
Area: 117 sq. ft  
Counted as living area: Yes

Heated: Yes  
Finished: Yes  
Enclosed: Yes  
Contiguous: Yes  
Permitted: Yes  
Wet space: No  
Addition: No  
Conversion: No

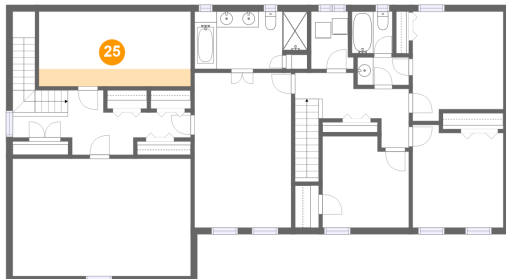
### 24 Floor 3 - Bath



Dimensions: 6'6" x 3'6"  
Area: 22 sq. ft  
Counted as living area: Yes

Heated: Yes  
Finished: Yes  
Enclosed: Yes  
Contiguous: Yes  
Permitted: Yes  
Wet space: Yes  
Addition: No  
Conversion: No

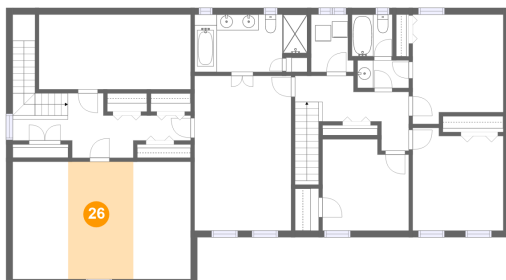
### 25 Floor 3 - Attic



Dimensions: 19'1" x 9'5"  
Area: 42 sq. ft  
Counted as living area: No

Heated: No  
Finished: No  
Enclosed: Yes  
Contiguous: No  
Permitted: Yes  
Wet space: No  
Addition: No  
Conversion: No

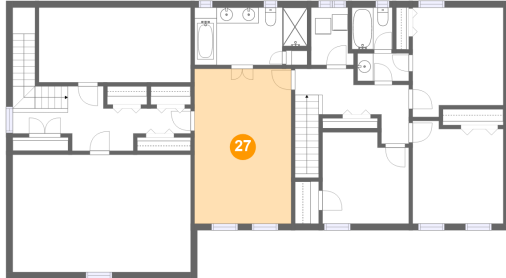
### 26 Floor 3 - Attic



Dimensions: 22'5" x 14'9"  
Area: 121 sq. ft  
Counted as living area: No

Heated: No  
Finished: No  
Enclosed: Yes  
Contiguous: No  
Permitted: Yes  
Wet space: No  
Addition: No  
Conversion: No

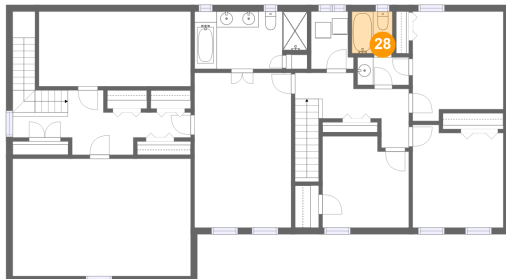
### 27 Floor 3 - Primary Bedroom



Dimensions: 12'2" x 19'5"  
Area: 236 sq. ft  
Counted as living area: Yes

Heated: Yes  
Finished: Yes  
Enclosed: Yes  
Contiguous: Yes  
Permitted: Yes  
Wet space: No  
Addition: No  
Conversion: No

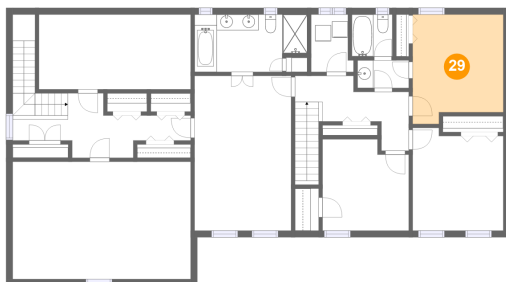
### 28 Floor 3 - Bath



Dimensions: 5'1" x 5'3"  
Area: 27 sq. ft  
Counted as living area: Yes

Heated: Yes  
Finished: Yes  
Enclosed: Yes  
Contiguous: Yes  
Permitted: Yes  
Wet space: Yes  
Addition: No  
Conversion: No

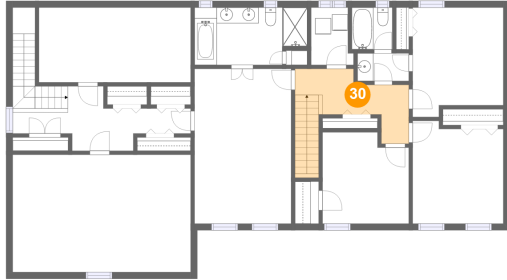
### 29 Floor 3 - Bedroom



Dimensions: 11'5" x 13'9"  
Area: 145 sq. ft  
Counted as living area: Yes

Heated: Yes  
Finished: Yes  
Enclosed: Yes  
Contiguous: Yes  
Permitted: Yes  
Wet space: No  
Addition: No  
Conversion: No

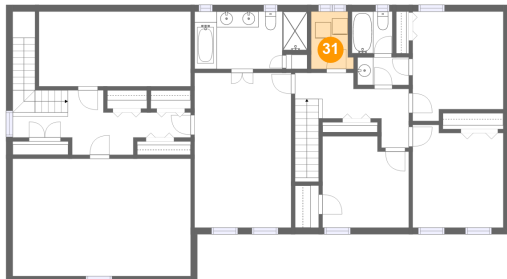
### 30 Floor 3 - Hall



Dimensions: 14'4" x 9'5"  
Area: 104 sq. ft  
Counted as living area: Yes

Heated: Yes  
Finished: Yes  
Enclosed: Yes  
Contiguous: Yes  
Permitted: Yes  
Wet space: No  
Addition: No  
Conversion: No

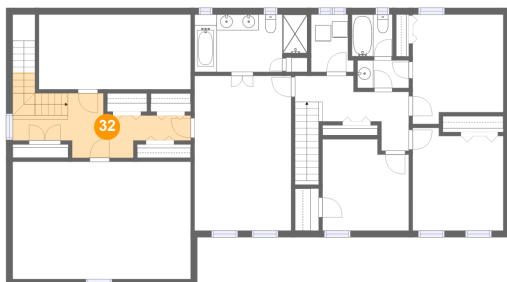
### 31 Floor 3 - Laundry



Dimensions: 5'4" x 7'3"  
Area: 34 sq. ft  
Counted as living area: Yes

Heated: Yes  
Finished: Yes  
Enclosed: Yes  
Contiguous: Yes  
Permitted: Yes  
Wet space: No  
Addition: No  
Conversion: No

### 32 Floor 3 - Dressing Room



Dimensions: 22'5" x 8'1"  
Area: 126 sq. ft  
Counted as living area: Yes

Heated: Yes  
Finished: Yes  
Enclosed: Yes  
Contiguous: Yes  
Permitted: Yes  
Wet space: No  
Addition: No  
Conversion: No



### 33 Floor 3 - Primary Bath



Dimensions: 14'2" x 7'3"

Area: 95 sq. ft

Counted as living area: Yes

Heated: Yes

Finished: Yes

Enclosed: Yes

Contiguous: Yes

Permitted: Yes

Wet space: Yes

Addition: No

Conversion: No